

Product datasheet for RC211771

MARCH8 (NM_001002265) Human Tagged ORF Clone

Product data:

Product Type:	Expression Plasmids
Product Name:	MARCH8 (NM_001002265) Human Tagged ORF Clone
Tag:	Myc-DDK
Symbol:	MARCH8
Synonyms:	c-MIR; MARCH-VIII; MIR; RNF178
Mammalian Cell Selection:	Neomycin
Vector:	pCMV6-Entry (PS100001)
E. coli Selection:	Kanamycin (25 ug/mL)
ORF Nucleotide Sequence:	>RC211771 representing NM_001002265 Red=Cloning site Blue=ORF Green=Tags(s)

TTTTGTAATACGACTCACTATAGGGCGGCCGGAATTCGTCGACTGGATCCGGTACCGAGGAGATCTGCC
GCC**CGATCGCC**

ATGAGCATGCCACTGCATCAGATCTCTGCCATTCCATCCCAGGATGCCATCTCTGCTAGAGTCTACAGAA
GTAAGACCAAAGAAAAGGAGAGGGAAGAACAAGAGAGTTCGGGACATTCATGAGTCATTCAAG
CAACATTTCTAAGGCTGGGAGTCTCCGTCAGCATCAGCTCCGGCTCCGGTGTCTCTCTCGCACT
TCTATCACGCCATCCAGCCAGGACATCTGCAGGATCTGCCACTGTGAAGGAGATGATGAGAGCCCCCTGA
TCAACCCCTGCCACTGCACAGGAAGCCTCCACTTCGTGCACCAGGCTGCCTGCAGCAGTGGATCAAGAG
CTCCGACACGCGCTGCTGCGAGCTCTGCAAGTATGAGTTCATCATGGAGACCAAGCTGAAGCCACTGAGA
AAATGGGAGAAGTTGCAGATGACGTCCAGCGAGCGCAGGAAGATCATGTGCTCAGTGACATTCCACGTCA
TTGCCATCACATGTGTGGTCTGGTCTTGTATGTGCTCATTGACCGTACTGCTGAGGAGATCAAGCAGGG
GCAGGCAACAGGAATCTAGAATGGCCCTTTGGACTAAATTGGTGGTTGTGGCCATCGGCTTACCAGGA
GGACTTCTTTTATGTATGTTCAAGTGTAAAGTGTATGTGCAATTGTGGAAGAGACTCAAGGCCTATAATA
GAGTGATCTATGTTCAAACTGTCCAGAAACAAGCAAAAAGAATATTTTTGAAAAATCTCCACTAACAGA
GCCCAACTTTGAAAATAAACATGGACATGGAATCTGTCTATTCCGACACAACTCTTCTTGTGCACAGAG
CCTGAAGACTGGAGCAGAAATCATTACGTC

ACGCGTACGCGGCCGCTCGAGCAGAACTCATCTCAGAAGAGGATCTGGCAGCAAATGATATCCTGGATT
ACAAGGATGACGACGATAAGGTTTAA



[View online »](#)

Protein Sequence: >RC211771 representing NM_001002265
Red=Cloning site Green=Tags(s)

MSMPLHQISAIPSQDAISARVYRSKTKEKEREEQNEKTLGHFMSHSSNISKAGSPPSASAPVSSFSRT
 SITPSSQDICRICHCEGDDESP LITPCHCTGSLHFVHQACLQQWIKSSDRCCCELCKYEFIMETKPKPLR
 KWEKLQMTSSERRKIMCSVTFHVIAITCVVWSLYVLIDRTAEEIKQGQATGILEWPFWTKLVVVAIGFTG
 GLLFMVYQCKVYVQLWKRLKAYNRVIYVQNCPETSKKNIFEKSPLTEPNFENKHHGHGICHSDTNSSCCTE
 PEDTGAEIIHV

TRTRPLEQKLISEEDLAANDILDYKDDDDKV

Chromatograms: https://cdn.origene.com/chromatograms/mg2889_f03.zip

Restriction Sites: SgfI-MluI

Cloning Scheme:

Cloning sites used for ORF Shuttling:



* The last codon before the Stop codon of the ORF

ACCN: NM_001002265

ORF Size: 873 bp

OTI Disclaimer: The molecular sequence of this clone aligns with the gene accession number as a point of reference only. However, individual transcript sequences of the same gene can differ through naturally occurring variations (e.g. polymorphisms), each with its own valid existence. This clone is substantially in agreement with the reference, but a complete review of all prevailing variants is recommended prior to use. [More info](#)

OTI Annotation: This clone was engineered to express the complete ORF with an expression tag. Expression varies depending on the nature of the gene.

Components: The ORF clone is ion-exchange column purified and shipped in a 2D barcoded Matrix tube containing 10ug of transfection-ready, dried plasmid DNA (reconstitute with 100 ul of water).

Reconstitution Method:

1. Centrifuge at 5,000xg for 5min.
2. Carefully open the tube and add 100ul of sterile water to dissolve the DNA.
3. Close the tube and incubate for 10 minutes at room temperature.
4. Briefly vortex the tube and then do a quick spin (less than 5000xg) to concentrate the liquid at the bottom.
5. Store the suspended plasmid at -20°C. The DNA is stable for at least one year from date of shipping when stored at -20°C.

RefSeq: [NM_001002265.1](#), [NP_001002265.1](#)

RefSeq Size: 2604 bp

RefSeq ORF: 875 bp

Locus ID: 220972

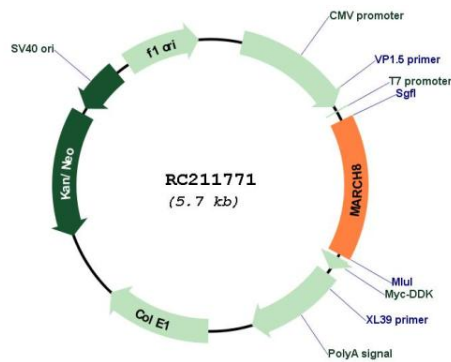
Cytogenetics: 10q11.21-q11.22

Protein Families: Druggable Genome, Transmembrane

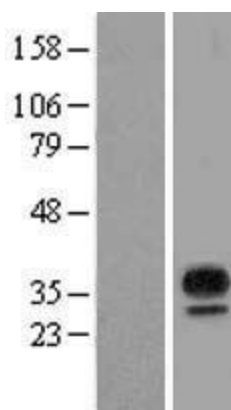
MW: 32.8 kDa

Gene Summary: MARCH8 is a member of the MARCH family of membrane-bound E3 ubiquitin ligases (EC 6.3.2.19). MARCH enzymes add ubiquitin (see MIM 191339) to target lysines in substrate proteins, thereby signaling their vesicular transport between membrane compartments. MARCH8 induces the internalization of several membrane glycoproteins (Goto et al., 2003 [PubMed 12582153]; Bartee et al., 2004 [PubMed 14722266]).[supplied by OMIM, Apr 2010]

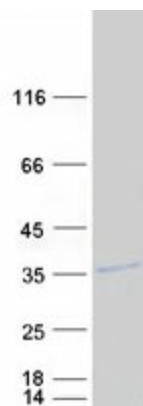
Product images:



Circular map for RC211771



Western blot validation of overexpression lysate (Cat# [LY424197]) using anti-DDK antibody (Cat# [TA50011-100]). Left: Cell lysates from untransfected HEK293T cells; Right: Cell lysates from HEK293T cells transfected with RC211771 using transfection reagent MegaTran 2.0 (Cat# [TT210002]).



Coomassie blue staining of purified MARCH8 protein (Cat# [TP311771]). The protein was produced from HEK293T cells transfected with MARCH8 cDNA clone (Cat# RC211771) using MegaTran 2.0 (Cat# [TT210002]).