

Product datasheet for RC211763

PPP1R14D (NM_017726) Human Tagged ORF Clone

Product data:

Product Type:	Expression Plasmids
Product Name:	PPP1R14D (NM_017726) Human Tagged ORF Clone
Tag:	Myc-DDK
Symbol:	PPP1R14D
Synonyms:	CPI17-like; GBPI-1; GBPI1
Mammalian Cell Selection:	Neomycin
Vector:	pCMV6-Entry (PS100001)
E. coli Selection:	Kanamycin (25 ug/mL)
ORF Nucleotide Sequence:	>RC211763 ORF sequence Red=Cloning site Blue=ORF Green=Tags(s)

TTTTGTAATACGACTCACTATAGGGCGGCCGGAATTCGTCGACTGGATCCGGTACCGAGGAGATCTGCC
 GCCCGCATCGCC

ATGCTGTCTTCAAGCCCTGCTTCTGCACATCTCCAGCCCAGATGGGAGAACCCATGTAAGAAGGTCC
 ACTGGGCTTCTGGGAGGAGAAGGACATCATCCACAGACTCAGAGTCCAAGTCCACCCGGACTCTCCAA
 GATACCCAGGTCCCGGAGACCCAGCCGCTGACAGTGAAGTATGACCGGGCCAGCTCCAGCGCTGGCTG
 GAGATGGAGCAATGGGTGGATGCTCAAGTTCAGGAGCTTTCAGGATCAAGCAACCCCTTCTGAGCCTG
 AGATTGACCTGGAAGCTCTCATGGATCTATCCACAGAGGAGCAGAAGACTCAGCTGGAGGCCATTCTTG
 GAACTGCCCCCGCCACAGAGGCTTTTATCTCTGAGCTGCTCAGTCAACTCAAGAACTCCGGAGACTC
 AGCCGGCCTCAGAAA

ACGCGTACGCGGCCGCTCGAGCAGAACTCATCTCAGAAGAGGATCTGGCAGCAAATGATATCCTGGATT
 ACAAGGATGACGACGATAAGGTTTAA

Protein Sequence:	>RC211763 protein sequence Red=Cloning site Green=Tags(s)
-------------------	--

MLSSSPASCTSPSPDGENPCKKVHWASGRRTSSTDSESKSHPDSSKIPSRPRSRLTVKYDRGQLQRWL
 EMEQWVDAQVQELFQDQATPSEPEIDLEALMDLSTEEQKTQLEAILGNCPRPTEAFISELLSQLKKLRRL
 SRPQK

TRTRPLEQKLISEEDLAANDILDYKDDDDKV

Chromatograms:	https://cdn.origene.com/chromatograms/mk6450_d02.zip
----------------	---


[View online »](#)

Restriction Sites: SgfI-MluI

Cloning Scheme:



ACCN: NM_017726

ORF Size: 435 bp

OTI Disclaimer: The molecular sequence of this clone aligns with the gene accession number as a point of reference only. However, individual transcript sequences of the same gene can differ through naturally occurring variations (e.g. polymorphisms), each with its own valid existence. This clone is substantially in agreement with the reference, but a complete review of all prevailing variants is recommended prior to use. [More info](#)

OTI Annotation: This clone was engineered to express the complete ORF with an expression tag. Expression varies depending on the nature of the gene.

Components: The ORF clone is ion-exchange column purified and shipped in a 2D barcoded Matrix tube containing 10ug of transfection-ready, dried plasmid DNA (reconstitute with 100 ul of water).

Reconstitution Method:

1. Centrifuge at 5,000xg for 5min.
2. Carefully open the tube and add 100ul of sterile water to dissolve the DNA.
3. Close the tube and incubate for 10 minutes at room temperature.
4. Briefly vortex the tube and then do a quick spin (less than 5000xg) to concentrate the liquid at the bottom.
5. Store the suspended plasmid at -20°C. The DNA is stable for at least one year from date of shipping when stored at -20°C.

Note: Plasmids are not sterile. For experiments where strict sterility is required, filtration with 0.22um filter is required.

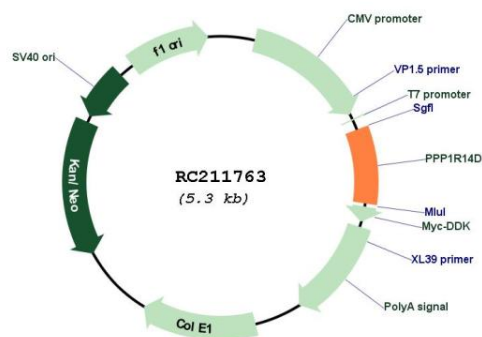
RefSeq: [NM_017726.8](#)

RefSeq Size: 764 bp

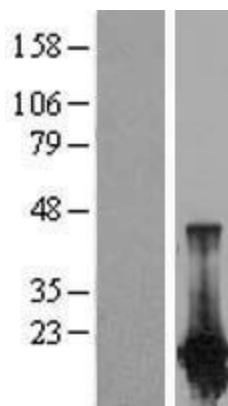
RefSeq ORF: 438 bp

Locus ID:	54866
UniProt ID:	Q9NXH3
Cytogenetics:	15q15.1
Protein Families:	Druggable Genome
MW:	16.5 kDa
Gene Summary:	Protein phosphatase-1 (PP1; see MIM 176875) is a major cellular phosphatase that reverses serine/threonine protein phosphorylation. PPP1R14D is a PP1 inhibitor that itself is regulated by phosphorylation (Liu et al., 2004 [PubMed 12974676]).[supplied by OMIM, Feb 2010]

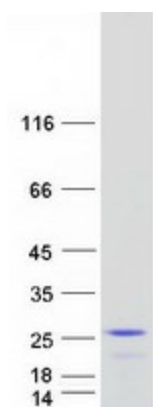
Product images:



Circular map for RC211763



Western blot validation of overexpression lysate (Cat# [LY413594]) using anti-DDK antibody (Cat# [TA50011-100]). Left: Cell lysates from untransfected HEK293T cells; Right: Cell lysates from HEK293T cells transfected with RC211763 using transfection reagent MegaTran 2.0 (Cat# [TT210002]).



Coomassie blue staining of purified PPP1R14D protein (Cat# [TP311763]). The protein was produced from HEK293T cells transfected with PPP1R14D cDNA clone (Cat# RC211763) using MegaTran 2.0 (Cat# [TT210002]).