

Product datasheet for RC211761

VENTX (NM_014468) Human Tagged ORF Clone

Product data:

Product Type:	Expression Plasmids
Product Name:	VENTX (NM_014468) Human Tagged ORF Clone
Tag:	Myc-DDK
Symbol:	VENTX
Synonyms:	HPX42B; NA88A; VENTX2
Mammalian Cell Selection:	Neomycin
Vector:	pCMV6-Entry (PS100001)
E. coli Selection:	Kanamycin (25 ug/mL)
ORF Nucleotide Sequence:	>RC211761 ORF sequence Red=Cloning site Blue=ORF Green=Tags(s)

TTTTGTAATACGACTCACTATAGGGCGCCGGGAATTCGTCGACTGGATCCGGTACCGAGGAGATCTGCC
GCC**CGATCGCC**

ATGCGCCTCTCCTCCTCCCCACCTCGTGGCCCGCAGCAGCTCTCCAGCTTTGGCTCCGTGGACTGGCTCT
CCCAGAGCAGCTGCTCAGGGCCGACCCACACCCCGAGCCTGCCGACTTCTCCCCGGGAGCCTCCCTGG
CCCGGGCCAGACATCCGGCGCCCGGAGCCCCCTCAGGCCGTGAGCATCAAGGAGCCGCCGGTCTCTCA
AATCTGCCTGCGCCGGAGAGGACCATGGCCGGTTGAGTAAGGAGCCAAATACCTTGGGGCCCCCGTG
TCCGCACAGCCTTACCATGGAGCAGTCCGCACCTTGGAGGGCGTCTTCCAGCACCACAGTACCTGAG
CCCTCTGGAGCGGAAGAGGCTGGCCAGGAGATGCAGCTCTCAGAGGTCCAGATAAAAACCTGGTTTCAG
AATCGCCGCATGAAACACAAACGGCAAATGCAGGACCCCGAGCTGCACAGCCCTTCTCGGGTCTCTCC
ATGCGCCCCAGCTTTCTACTCAACGTCTTCTGGCCTTGCCAATGGCCTGCAGCTGCTGTGCCCTTGGGC
ACCCCTGTCCGGGCCAGGCTCTGATGCTGCCCCCTGGCTCCTTCTGGGGTCTCTGCCAAGTGGCACA
GAGGCCCTGGCATCTGCGGGAGCTTCTGCTGCGGGCAGCCTCTGGCGTCCCACCCCTACCCAGGCC
GGCCTTCGCTGGGACAGCCCTGTCCACGGGGCCCCGGGGCTGTGTGCTATGCCACAGACGGGGATGC
ATTT

ACGCGTACGCGGCCGCTCGAGCAGAACTCATCTCAGAAGAGGATCTGGCAGCAAATGATATCCTGGATT
ACAAGGATGACGACGATAAGGTTTAA



[View online »](#)

Protein Sequence: >RC211761 protein sequence
Red=Cloning site Green=Tags(s)

MRLSSSPPRGPQQLSSFSGVDWLSQSSCSGPTHTPRPADFSPGSLPGPGQTSGAREPPQAVSIKEAAGSS
 NLPAPERTMAGLSKEPNTLRAPRVRTAF TMEQVRTLEGVFQHHQYLSPLERKRLAREMQLSEVQIKTWFO
 NRRMKHKRQMQDPQLHSPFSGSLHAPP AFYSTSSGLANGLQLLCPWAPLSGPQALMLPPGSFWGLCQVAQ
 EALASAGASCCGQPLASHPPTPGRPSLGPALSTGPRGLCAMPQTGD AF

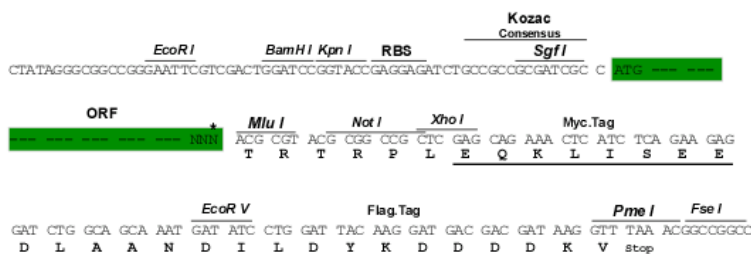
TRTRPLEQKLISEEDLAANDILDYKDDDDKV

Chromatograms: https://cdn.origene.com/chromatograms/mk6560_b01.zip

Restriction Sites: SgfI-MluI

Cloning Scheme:

Cloning sites used for ORF Shuttling:



* The last codon before the Stop codon of the ORF

ACCN: NM_014468

ORF Size: 774 bp

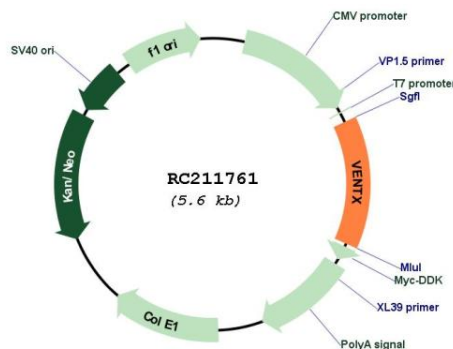
OTI Disclaimer: Due to the inherent nature of this plasmid, standard methods to replicate additional amounts of DNA in E. coli are highly likely to result in mutations and/or rearrangements. Therefore, OriGene does not guarantee the capability to replicate this plasmid DNA. Additional amounts of DNA can be purchased from OriGene with batch-specific, full-sequence verification at a reduced cost. Please contact our customer care team at custsupport@origene.com or by calling 301.340.3188 option 3 for pricing and delivery.

The molecular sequence of this clone aligns with the gene accession number as a point of reference only. However, individual transcript sequences of the same gene can differ through naturally occurring variations (e.g. polymorphisms), each with its own valid existence. This clone is substantially in agreement with the reference, but a complete review of all prevailing variants is recommended prior to use. [More info](#)

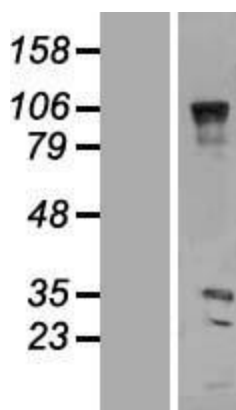
OTI Annotation: This clone was engineered to express the complete ORF with an expression tag. Expression varies depending on the nature of the gene.

- Components:** The ORF clone is ion-exchange column purified and shipped in a 2D barcoded Matrix tube containing 10ug of transfection-ready, dried plasmid DNA (reconstitute with 100 ul of water).
- Reconstitution Method:**
1. Centrifuge at 5,000xg for 5min.
 2. Carefully open the tube and add 100ul of sterile water to dissolve the DNA.
 3. Close the tube and incubate for 10 minutes at room temperature.
 4. Briefly vortex the tube and then do a quick spin (less than 5000xg) to concentrate the liquid at the bottom.
 5. Store the suspended plasmid at -20°C. The DNA is stable for at least one year from date of shipping when stored at -20°C.
- RefSeq:** [NM_014468.4](#)
- RefSeq Size:** 2422 bp
- RefSeq ORF:** 777 bp
- Locus ID:** 27287
- UniProt ID:** [O95231](#)
- Cytogenetics:** 10q26.3
- Protein Families:** Transcription Factors
- MW:** 27.5 kDa
- Gene Summary:** This gene encodes a member of the Vent family of homeodomain proteins. The encoded protein may function as a transcriptional repressor and be involved in mesodermal patterning and hemopoietic stem cell maintenance. Multiple pseudogenes exist for this gene. A transcribed pseudogene located on chromosome X may lead to antigen production in certain melanomas. [provided by RefSeq, Jul 2008]

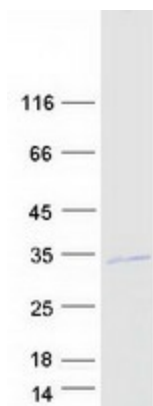
Product images:



Circular map for RC211761



Western blot validation of overexpression lysate (Cat# [LY415250]) using anti-DDK antibody (Cat# [TA50011-100]). Left: Cell lysates from untransfected HEK293T cells; Right: Cell lysates from HEK293T cells transfected with RC211761 using transfection reagent MegaTran 2.0 (Cat# [TT210002]).



Coomassie blue staining of purified VENTX protein (Cat# [TP311761]). The protein was produced from HEK293T cells transfected with VENTX cDNA clone (Cat# RC211761) using MegaTran 2.0 (Cat# [TT210002]).