

Product datasheet for **RC211746**

TULP1 (NM_003322) Human Tagged ORF Clone

Product data:

| | |
|---------------------------|--|
| Product Type: | Expression Plasmids |
| Product Name: | TULP1 (NM_003322) Human Tagged ORF Clone |
| Tag: | Myc-DDK |
| Symbol: | TULP1 |
| Synonyms: | LCA15; RP14; TUBL1 |
| Mammalian Cell Selection: | Neomycin |
| Vector: | pCMV6-Entry (PS100001) |
| E. coli Selection: | Kanamycin (25 ug/mL) |



[View online »](#)

ORF Nucleotide Sequence:

>RC211746 representing NM_003322
 Red=Cloning site Blue=ORF Green=Tags(s)

TTTTGTAATACGACTCACTATAGGGCGGCCGGAATTCGTCGACTGGATCCGGTACCGAGGAGATCTGCC
 GCC**CGCATCGCC**

ATGCCTCTGCGGGATGAAACCCCTCCGAGAGGTGTGGCCTCTGACAGTGGGCATGAAGAAGAAAGCCTGA
 GCCCGGAGGCCCGCGGGGCCCAACAGCGACCCGCCCGGCACAGAGGCTAAGGAAGAAGAGGACGGA
 GGCCCCGAATCCCCCTGCCACCGGGATCCAAGCCCCGGAAGCCCGGAGCTGGGCGGACGGGGAGGCCG
 CGGGAGGAGCCTTCCCCAGACCCAGCCAGGCCCGGGCGCCGACGAGTCTACGCCAGGTTCTCAGGG
 ACCCCGAGGCCAAGAAGCGCGACCCCGGAAACCTTTCTGGTAGCCCGTCCCCAGACGCGGAGGACGA
 GGAGGAGGAGGAAGAGGAGGACGAGGAGGACGAGGAAGAGGAGGCAGAGGAAAAGAAAGAGAAAATCCTT
 CTGCCTCCAAGAAGCCCTGAGAGAGAAGAGCTCCGCAGACCTGAAGGAGAGGAGGCCAAGGCCCAGG
 GCCAAGGGGAGACCTGGGAAGCCCTGACCCCCACCGAAACCTCTGCGTGTAGGAATAAGGAAGTCC
 AGCAGGGGAGGGACCAAGATGAGAAAGACCAAGAAGAAAGGGTCTGGGGAGGCCACAAGACCCCTCA
 GGGAGCCAGCCAGTGCAGGAAGAGCCAGCAGCCATGTTTCTGGTTGGGAAGGCAGTCTGACAAGA
 AAGCCCTGAAGAAGAAAGGCACTCCAAAGGCGCGAGGAAGGAGGAAGAAGAGGAGGAGGAGGCAGCTAC
 GGTGATAAAGAAGAGCAATCAAAAGGGCAAAGCCAAAGGAAAAGGCAAAAAGAAAGCGAAGGAGGAGAGG
 GCCCGTCTCCCCCGTGGAGGTGGACGAACCCCGGAGTTTGTGCTCCGGCCTGCCCCAGGGCCGCA
 CGGTGCGCTGCCGGTGACCCGGGACAAAAAGGGCATGGATCGAGGCATGTATCCCTCCTACTTCTGCA
 CCTGGACACGGAGAAGAAGGTGTTCTCTTGGCTGGCAGGAAACGAAAACGGAGCAAGACAGCCAATTAC
 CTCATCTCCATCGACCCTACCAATCTGTCCGAGGAGGGGAGAATTTTCATCGGAAGCTGAGGTTCAACC
 TCCTGGGAACCGCTTACCGTCTTTGACAACGGGCAGAACCCACAGCGTGGGTACAGACTAATGTGGC
 AAGCCTTCGGCAGGAGCTGGCAGCTGTGATCTATGAAACCAACGTGCTGGGCTTCCGTGGCCCCGGCGC
 ATGACCGTCATCATTCTGGCATGAGTGCAGGAAACGAGAGGGTCCCATCCGGCCCCGAATGCTAGTG
 ACGGCCTGCTGGTGCCTGGCAGAAACAAGACGCTGGAGAGCCTCATAGAAGTGCACAACAAGCCACCTGT
 CTGGAACGATGACAGTGGCTCCTACACCCTCAACTTCCAAGGCCGGTCAACCAGGCCTCAGTCAAGAAC
 TTCCAGATTGTCCAGCTGATGACCCCGACTATATCGTGTGCAGTTCGGCCGCTGGCGGAGGACGCT
 TCACCCTAGACTACCGGTACCCGCTGTGCGCCCTGCAGGCCTTCGCCATCGCCCTCTCCAGTTTCGACGG
 GAAGCTGGCCTGCGAG

ACGCGTACGCGGCCGCTCGAGCAGAAACTCATCTCAGAAGAGGATCTGGCAGCAAATGATATCCTGGATT
 ACAAGGATGACGACGATAAGGTTTAA

Protein Sequence:

>RC211746 representing NM_003322
 Red=Cloning site Green=Tags(s)

MPLRDETLREVWASDSGHEEESLSPEAPRRPKQRPAPAQRLRKKRTEAPESPCPTGSKPRKPGAGRTGRP
 REEPSDPDAQARAPQTVYARFLRDPEAKKRDPRETFVARAPDAEDEEEEEDEDEEEEAEEKKEKIL
 LPPKPLREKSSADLKERRAKAQGPRGDLGSPDPPKPLRVRNKEAPAGEGKMRKTKKKGSGEADKDP
 GSPASARKSPAAMFLVGEVSPDKKALKKKGTPKGARKEEEEEEAATVIKKNQKQKAKGKGGKAKEER
 APSPVVEVDEPREFVLRPAPQGRVRCRLTRDKKGMDRGMYSYFLHLDTEKKVFLLAGRKRKSKTANY
 LISIDPTNLSRGGENFIGKLRNLLGNRFTVFDNGQNPQRYSTNVASLRQELAAVIYETNVLGFRGPRR
 MTVIIPGMSAENERVPIRPRNASDGLLVRWQNTLESLELHNKPPVWDDSGSYTLNFQGRVTQASVKN
 FQIVHADDPDYIVLQFGRVAEDAFTLDYRYPLCALQAFALSSFDGKLACE

TRTRPLEQKLISEEDLAANDILDYKDDDDKV

Chromatograms:

https://cdn.origene.com/chromatograms/ja1653_a09.zip

Restriction Sites:

SgfI-MluI

Cloning Scheme:


ACCN: NM_003322

ORF Size: 1626 bp

OTI Disclaimer: The molecular sequence of this clone aligns with the gene accession number as a point of reference only. However, individual transcript sequences of the same gene can differ through naturally occurring variations (e.g. polymorphisms), each with its own valid existence. This clone is substantially in agreement with the reference, but a complete review of all prevailing variants is recommended prior to use. [More info](#)

OTI Annotation: This clone was engineered to express the complete ORF with an expression tag. Expression varies depending on the nature of the gene.

Components: The ORF clone is ion-exchange column purified and shipped in a 2D barcoded Matrix tube containing 10ug of transfection-ready, dried plasmid DNA (reconstitute with 100 ul of water).

- Reconstitution Method:**
1. Centrifuge at 5,000xg for 5min.
 2. Carefully open the tube and add 100ul of sterile water to dissolve the DNA.
 3. Close the tube and incubate for 10 minutes at room temperature.
 4. Briefly vortex the tube and then do a quick spin (less than 5000xg) to concentrate the liquid at the bottom.
 5. Store the suspended plasmid at -20°C. The DNA is stable for at least one year from date of shipping when stored at -20°C.

RefSeq: [NM_003322.6](#)

RefSeq Size: 2090 bp

RefSeq ORF: 1629 bp

Locus ID: 7287

UniProt ID: [O00294](#)

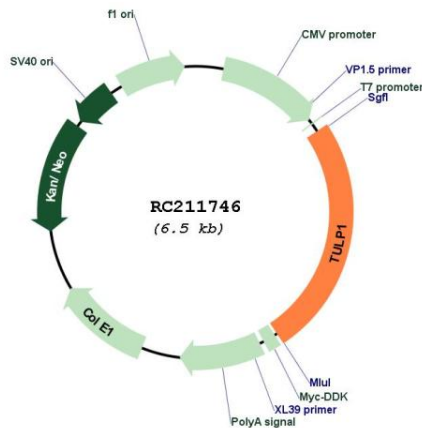
Cytogenetics: 6p21.31

Protein Families: Druggable Genome

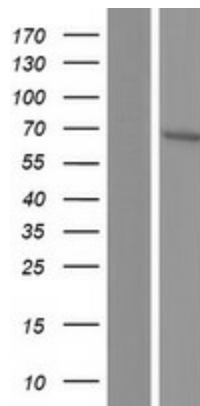
MW: 60.4 kDa

Gene Summary: This gene encodes a member of the tubby-like gene family (TULPs). Members of this family have been identified in plants, vertebrates, and invertebrates. TULP proteins share a conserved C-terminal region of approximately 200 amino acid residues. The protein encoded by this gene is thought to play a role in the physiology of photoreceptors. Mutations in this gene are associated with recessive juvenile retinitis pigmentosa and Leber congenital amaurosis-15. [provided by RefSeq, Nov 2016]

Product images:



Circular map for RC211746



Western blot validation of overexpression lysate (Cat# [LY418765]) using anti-DDK antibody (Cat# [TA50011-100]). Left: Cell lysates from untransfected HEK293T cells; Right: Cell lysates from HEK293T cells transfected with RC211746 using transfection reagent MegaTran 2.0 (Cat# [TT210002]).