

Product datasheet for **RC211745**

SIN1 (MAPKAP1) (NM_001006617) Human Tagged ORF Clone

Product data:

Product Type:	Expression Plasmids
Product Name:	SIN1 (MAPKAP1) (NM_001006617) Human Tagged ORF Clone
Tag:	Myc-DDK
Symbol:	SIN1
Synonyms:	JC310; MIP1; SIN1; SIN1b; SIN1g
Mammalian Cell Selection:	Neomycin
Vector:	pCMV6-Entry (PS100001)
E. coli Selection:	Kanamycin (25 ug/mL)



[View online »](#)

ORF Nucleotide Sequence:

>RC211745 representing NM_001006617
 Red=Cloning site Blue=ORF Green=Tags(s)

TTTTGTAATACGACTCACTATAGGGCGGCCGGAATTCGTCGACTGGATCCGGTACCGAGGAGATCTGCC
 GCC**CGGATCGCC**

ATGGCCTTCTGGACAATCCAATCATCTAGCTCATATTCGACAGTCACATGTGACCAGTGATGACA
 CGGAATGTGTGAGATGTTCTCATTGATCATGATGTTGACCTAGAGAAGATTCATCCTCCTCAATGCC
 TGGAGACAGTGGGTGAGAAATTCAGGAAGCAATGGTGAAGTCAAGGCTATGTATATGCCAGTCACTC
 GATATTACCTCAAGTTGGGACTTTGGTATTAGAAGACGCTCAAACACAGCTCAAAGATTAGAAGCACTCC
 GAAAAGAGAGACAAAACAGATCAAATGCAAAAATATTCAAGTGGAAAGAAAGAAATCTAAGCAATCAGC
 CCAGGAGTTAAAGTCACTGTTTGAATAAATCTCTCAAAGAGAAGCCTCCAATTTCTGGGAAGCAGTCCG
 ATATTATCTGTACGCCTAGAACAGTGCCTCTGCAGCTGAATAACCCTTTAAACGAGTATCCAAATTTG
 ATGGCAAGGGTCACTGTAGGTACAACAGCAACCAAGAAGATCGATGTCTACCTCCCTCTGCACTCGAGCCA
 GGACAGACTGCTCCAATGACCGTGGTGAATGGCCAGCGCCAGGGTGCAGGACCTGATCGGGCTCATC
 TGCTGGCAGTATACAAGCGAAGGACGGGAGCCGAAGCTCAATGACAATGTCAAGTGCCTACTGCCTGCATA
 TTGCTGAGGATGATGGGGAGGTGGACACCGATTTCCCCCGCTGGATTCCAATGAGCCCATTCATAGTT
 TGGCTTCACTACTTTGGCCCTGGTTGAAAAGTACTCATCTCCTGGTCTGACATCCAAAGAGTCACTCTTT
 GTTCGAATAAATGCTGCTCATGGATTCTCCCTTATTCAGTGGACAACACAAAGGTTACCATGAAGGAAA
 TCTTACTGAAGGCAGTGAAGCGAAGAAAAGGATCCCAGAAAGTTTCAGGCCCTCAGTACCGCCTGGAGAA
 GCAGAGCGAGCCCAATGTCGCCGTTGACCTGGACAGCACTTTGGAGAGCCAGAGCGCATGGGAGTTCTGC
 CTGGTCCGCGAGAACAGTTCAAGGGCAGACGGGTTTTTGGAGAGGATTCGAAAATGACATAGCCACAG
 TACAGGATATGCTTAGCAGCCACCATTAACAAGTCAATCAAAGTCAAGTCAAGTCAAGTCAAGTCAAGTCAAG
 AACCGACTACAGCTAGGTATCTCTGGAGACAAAGTAGAGATAGACCCTGTTACGAATCAGAAAGCCAGC
 ACTAAGTTTTGGATTAAGCAGAAACCCATCTCAATCGATTCCGACCTGCTCTGTGCCTGTGACCTTGCTG
 AAGAGAAAAGCCCGAGTCAAGCAATATTTAAACTCACGTATCTAAGCAATCACGACTATAAACACCTCTA
 CTTTGAATCGGACGCTGCTACCGTCAATGAAATTTGTGCTCAAGGTTAACTACATCCTGGAATCGCGAGCT
 AGCACTGCCCGGGCTGACTACTTTGCTCAAAAACAAAGAAAAGTGAACAGACGTACGAGCTTCAAGCTTCC
 AGAAGGAGAAGAAATCCGGGCAGCAG

ACGCGTACGCGGCCGCTCGAGCAGAAACTCATCTCAGAAGAGGATCTGGCAGCAAATGATATCCTGGATT
 ACAAGGATGACGACGATAAGGTTTAA

Protein Sequence:

>RC211745 representing NM_001006617
 Red=Cloning site Green=Tags(s)

MAFLDNPTIILAHIRQSHVTSDDTGMCEMVLIDHDVDLEKIHPPSMPGDSGSEIQGSNGETQGYVYAQSV
 DITSSWDFGIRRRSNTAQRLELRKERQNIQKCKNIQWKERNKQSAQELKSLFEKSLKEKPPISGKQS
 ILSVRLEQCPLQLNPFNEYSKFDGKGVHGTATKKIDVYLPLHSSQDRLLPMTVVMTASARVQDLIGLI
 CWQYTSEGREPKLNDNVSAYCLHIAEDDGEVDTDFPPLDSNEPIHKFGFSTLALVEKYSSPLTSKESLF
 VRINAAGHGFSLIQVDNKTVMKEILLKAVKRRKGSQKVSQPQYRLEKQSEPNVAVDLSTLESQSAWEFC
 LVRENSSRADGVFEEDSQIDIATVQDMLSSHYSKFKVSMIHRLRFTTDVQLGISGDKVEIDPVTNQKAS
 TKFWIKQKPI SIDSDLLCACDLAEEKSPSHAIKLTLYLSNHDYKHL YFESDAATVNEIVLKVNYILESRA
 STARADYFAQKQRKLNRRTSFSFQKEKKSQ

TRTRPLEQKLISEEDLAANDILDYKDDDDKV

Chromatograms:

https://cdn.origene.com/chromatograms/mk6485_e01.zip

Restriction Sites:

SgfI-MluI

Cloning Scheme:


ACCN: NM_001006617

ORF Size: 1566 bp

OTI Disclaimer: The molecular sequence of this clone aligns with the gene accession number as a point of reference only. However, individual transcript sequences of the same gene can differ through naturally occurring variations (e.g. polymorphisms), each with its own valid existence. This clone is substantially in agreement with the reference, but a complete review of all prevailing variants is recommended prior to use. [More info](#)

OTI Annotation: This clone was engineered to express the complete ORF with an expression tag. Expression varies depending on the nature of the gene.

Components: The ORF clone is ion-exchange column purified and shipped in a 2D barcoded Matrix tube containing 10ug of transfection-ready, dried plasmid DNA (reconstitute with 100 ul of water).

- Reconstitution Method:**
1. Centrifuge at 5,000xg for 5min.
 2. Carefully open the tube and add 100ul of sterile water to dissolve the DNA.
 3. Close the tube and incubate for 10 minutes at room temperature.
 4. Briefly vortex the tube and then do a quick spin (less than 5000xg) to concentrate the liquid at the bottom.
 5. Store the suspended plasmid at -20°C. The DNA is stable for at least one year from date of shipping when stored at -20°C.

RefSeq: [NM_001006617.3](#)

RefSeq Size: 3395 bp

RefSeq ORF: 1569 bp

Locus ID: 79109

UniProt ID: [Q9BPZ7](#)

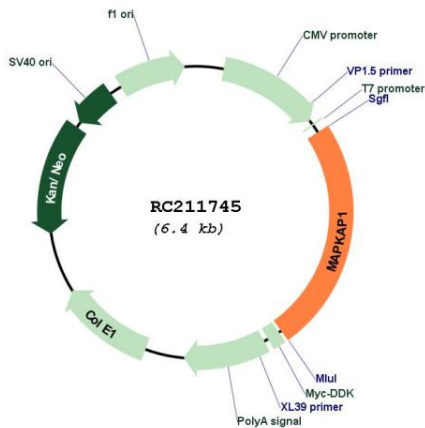
Cytogenetics: 9q33.3

Protein Families: Druggable Genome

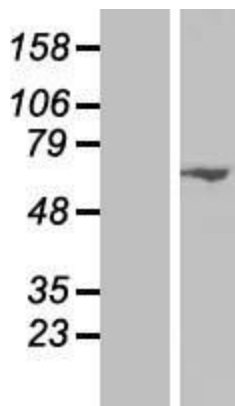
MW: 58.9 kDa

Gene Summary: This gene encodes a protein that is highly similar to the yeast SIN1 protein, a stress-activated protein kinase. Alternatively spliced transcript variants encoding distinct isoforms have been described. Alternate polyadenylation sites as well as alternate 3' UTRs have been identified for transcripts of this gene. [provided by RefSeq, Jul 2008]

Product images:



Circular map for RC211745



Western blot validation of overexpression lysate (Cat# [LY423693]) using anti-DDK antibody (Cat# [TA50011-100]). Left: Cell lysates from untransfected HEK293T cells; Right: Cell lysates from HEK293T cells transfected with RC211745 using transfection reagent MegaTran 2.0 (Cat# [TT210002]).



Coomassie blue staining of purified MAPKAP1 protein (Cat# [TP311745]). The protein was produced from HEK293T cells transfected with MAPKAP1 cDNA clone (Cat# RC211745) using MegaTran 2.0 (Cat# [TT210002]).