

## Product datasheet for **RC211733**

### PCDHA1 (NM\_031411) Human Tagged ORF Clone

#### Product data:

|                           |   |
|---------------------------|---|
| Product Type:             | Expression Plasmids                       |
| Product Name:             | PCDHA1 (NM_031411) Human Tagged ORF Clone |
| Tag:                      | Myc-DDK                                   |
| Symbol:                   | PCDHA1                                    |
| Synonyms:                 | PCDH-ALPHA1                               |
| Mammalian Cell Selection: | Neomycin                                  |
| Vector:                   | pCMV6-Entry (PS100001)                    |
| E. coli Selection:        | Kanamycin (25 ug/mL)                      |



[View online »](#)

ORF Nucleotide  
Sequence:

>RC211733 representing NM\_031411  
Red=Cloning site Blue=ORF Green=Tags(s)

TTTTGTAATACGACTCACTATAGGGCGGCCGGGAATTCGTCGACTGGATCCGGTACCGAGGAGATCTGCC  
GCCGCGATCGCC

ATGGTGTTTTCTAGGAGAGGGGGCTGGGAGCCCGGATCTGCTTCTTTGGCTTCTGCTCCTCGCAGCCT  
GGGAGGTGGGAGCGCCAGCTCCACTACTCGATCCCAGGAGGAAGCCAAACACGGCACCTTCGTTGGCCG  
CGTTGCTCAGGACCTGGGACTGGAGCTGGCGGAGCTGGTGCCTCGCCTGTTCCGGGTGGCGTCCAAAACA  
CACAGGGACCTTCTGGAGGTAATCTGCAGAATGGCATTGTTGTTGTGAATTCTCGGATCGATCGCGAGG  
AGCTGTGCCAGTGGAGCGCGGAGTGCAGCATCCACCTGGAGTTGATCGCCGACAGGCCGCTGCAGGTTTT  
CCATGTGGAGGTGAAGGTGAAAGACATTAACGATAATCCACCCGCTTTCAGGGGCAGAGAACAATAATA  
TTTATTCTGAATCTAGACTCCTGAATTCGCGTTTTCCGATAGAAGGAGCTGCTGATGCAGACATTGGTG  
CTAACGCTCTTAAACGTACACGCTCAGCCGAGTGATTATTTCTCTTTGGATGTAGAGGCAAGTGATGA  
ACTGAGTAAATCTCTTTGGCTTGAATTGAGAAAATATTTGGATAGAGAAGAAACACCAGAATTCACCTTA  
TTACTGACTGCCACTGATGGGGGCAAACCGGAGCTGCAAGGTACAGTTGAGCTGCTGATCACCGTCTCG  
ACGTTAATGATAACGCCCACTGTTGACCAGGCCGTATACAGAGTCCACTTGTTAGAGACTACAGCAAA  
TGGAACATTAGTGACCACATTAATGCCTCTGATGCTGACGAAGGTGTAATGGTGAAGTCGCTTTTCC  
TTTGACAGTGGTATTTCTCGTGACATTCAGAAAAATTCAAAGTTGATCCAGCTCAGGAGAAAATAGGT  
TAATTGATAAACTGGATTATGAAGAAACAAAATCCTACGAAATTCAGTAAAGGCAGTTGATAAAGGAAG  
TCCTCCGATGTCAAATCACTGTAAGGTTTTGGTGAAGTGCTGGATGTAATGATAATGCTCCAGAACTG  
GCGGTCACTTCATTGTATTTGCCTATCAGAGAGGACGCTCCACTCAGCACCGTCATCGCCCTCATACCCG  
TGCTGACCGTGACTCAGGTGCCAACGGGCAGGTGACTTGCTCCTTAATGCCCCACGTCCCCTTCAAGCT  
GGTGTCACCTTCAAGAATTAATACTACTCGTTGGTGTGGACAGCGCCCTGGATCGCGAGAGCCTGTCGGTC  
TATGAGCTGGTGGTGACCGCGCGGGACGGGGCTCGCCTTCGCTGTGGGCCACGGCCAGGGTGTCGGTGG  
AGGTGGCCGACGTGAATGACAACGCGCCTCGCTTCGCGCAGCCCGAGTACACAGTATTCGTGAAGGAGAA  
CAACCCGCGGGCTGCCACATCTTACGGTGTCTGCGCGGACGCGGACGCGCAGGAGAACGCGCTGGTG  
TCCTATTCGCTGGTGAACGCGGGTGGGCGAGCGCGCTGTGAACTACGTGTCAGTGCACGCGGAGA  
GCGGCAAGGTGTACGCACTGCAGCCCTGGACCACGAGGAGCTGGAGCTGCTGCAGTTCAGCCACGACA  
GCCCAACCCTGACTGGCGTTACTCTGCCTCCCTGAGAGCAGGCATGCACAGCTCTGTGCACCTAGAGGAG  
GCTGGCATTCTACGGCTGGTCCAGGAGGCCCTGATCAGCAGTGGCCAACAGTATCCAGTGCACACCAG  
AACCAGAGGCAGGAGAAGTGTCCCTCCAGTCGGTGCAGGTGTCAACAGCAACAGCTGGACCTTTAATA  
CGGACCAGGCAACCCCAACAATCCGGTCCCGGTGAGTTGCCCGACAAATTCATTATCCAGGATCTCCT  
GCAATCATCTCCATCCGGCAGGAGCCTACTAACAGCAAATTGACAAAAGTGACTTCATAACCTTCGGCA  
AAAAGGAGGAGACCAAGAAAAAGAAAAAGAAAGGGTAACAAGACCAGGAGAAAAAGAGAAAGG  
GAACAGCACGACTGACAACAGTGACCAG

ACGCGTACGCGGCCGCTCGAGCAGAACTCATCTCAGAAGAGGATCTGGCAGCAAATGATATCCTGGATT  
ACAAGGATGACGACGATAAGGTTTAA

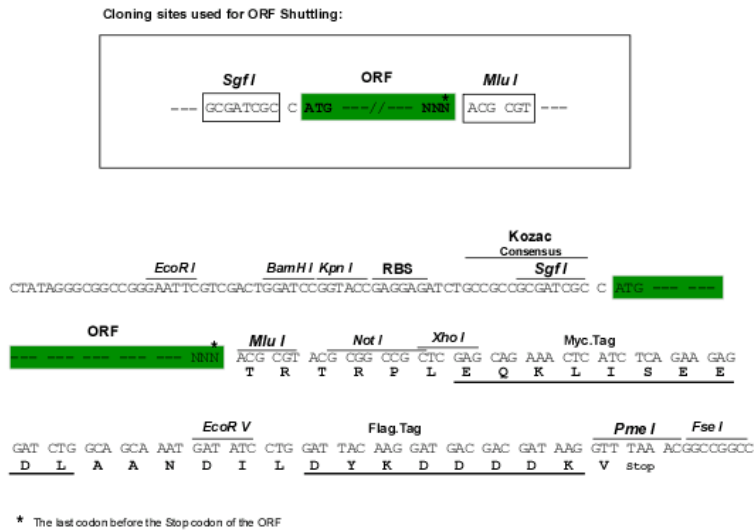
**Protein Sequence:** >RC211733 representing NM\_031411  
Red=Cloning site Green=Tags(s)

```

MVFSRRGGLGARDLLLWLLLLAAWEVSGSQLHYSIPEEAKHGTFVGRVAQDLGLELAELVPRLFRVASKT
HRDLLLEVLNQLNGILFVNSRIDREELCQWSAECSIHLELIADRPLQVFHVEVKVKDINDNPPVFRGREQII
FIPESRLLNSRFPIEGAADADIGANALLTYTLSPSDYFSLDVEASDELKSLWLELRKYLDREETPELHL
LLTATDGGKPELQGTVELLITVLDVNDNAPLFDQAVYRVHLETTANGTLVTTLNASDADEGVNGEVVFS
FDSGISRDIQEFKVDSSSGEIRLIDKLDYEETKSYEIQVKAVDKGSPPMSNHCKVLVKVLDVNDNAPEL
AVTSLYLPIREDAPLSTVIALITVSDRDSGANGQVTCSLMPHVPFKLVSTFKNYSLVLDSALDRESLSV
YELVVTARDGGSPSLWATARVSVVADVNDNAPAFAPQPEYTVFKENPPGCHIFTVSARDADAQENALV
SYSLVERRVGERALSNYVSVHAESGKVVYALQPLDHEEELLLQFQRPQPNPDWRYASLRAGMHSSVHLEE
AGILRAGPGPDQWPTVSSATPEPEAGEVSPVVGAGVNSNSWTFKYGPGNPKQSGPGELPKDFIIPGSP
AIIISIRQEPTNSQIDKSDFITFGKKEETKTKKKKKKGNKTQEKKEKGNSTTDNSDQ
  
```

TRTRPLEQKLI SEEDLAANDILDYKDDDDKV

**Chromatograms:** [https://cdn.origene.com/chromatograms/mk8072\\_h06.zip](https://cdn.origene.com/chromatograms/mk8072_h06.zip)  
**Restriction Sites:** SgfI-MluI  
**Cloning Scheme:**



**ACCN:** NM\_031411

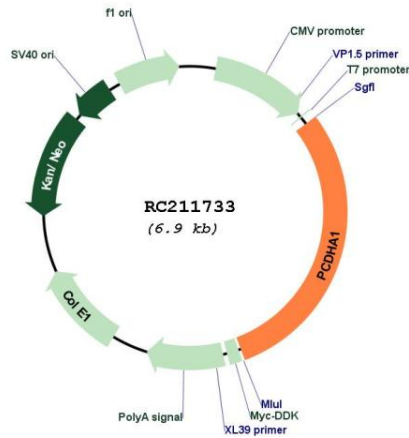
**ORF Size:** 2058 bp

**OTI Disclaimer:** The molecular sequence of this clone aligns with the gene accession number as a point of reference only. However, individual transcript sequences of the same gene can differ through naturally occurring variations (e.g. polymorphisms), each with its own valid existence. This clone is substantially in agreement with the reference, but a complete review of all prevailing variants is recommended prior to use. [More info](#)

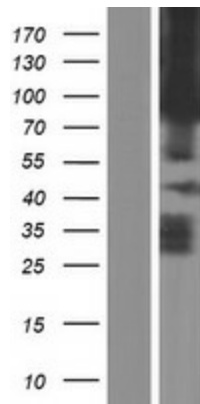
**OTI Annotation:** This clone was engineered to express the complete ORF with an expression tag. Expression varies depending on the nature of the gene.

|                               |   |
|-------------------------------|---|
| <b>Components:</b>            | The ORF clone is ion-exchange column purified and shipped in a 2D barcoded Matrix tube containing 10ug of transfection-ready, dried plasmid DNA (reconstitute with 100 ul of water).  |
| <b>Reconstitution Method:</b> | <ol style="list-style-type: none"><li>1. Centrifuge at 5,000xg for 5min.</li><li>2. Carefully open the tube and add 100ul of sterile water to dissolve the DNA.</li><li>3. Close the tube and incubate for 10 minutes at room temperature.</li><li>4. Briefly vortex the tube and then do a quick spin (less than 5000xg) to concentrate the liquid at the bottom.</li><li>5. Store the suspended plasmid at -20°C. The DNA is stable for at least one year from date of shipping when stored at -20°C.</li></ol>   |
| <b>RefSeq:</b>                | <a href="#">NM_031411.3</a>   |
| <b>RefSeq Size:</b>           | 4468 bp   |
| <b>RefSeq ORF:</b>            | 2061 bp   |
| <b>Locus ID:</b>              | 56147   |
| <b>UniProt ID:</b>            | <a href="#">Q9Y5I3</a>  |
| <b>Cytogenetics:</b>          | 5q31.3  |
| <b>Domains:</b>               | CA  |
| <b>Protein Families:</b>      | Transmembrane   |
| <b>MW:</b>                    | 72.4 kDa  |
| <b>Gene Summary:</b>          | <p>This gene is a member of the protocadherin alpha gene cluster, one of three related gene clusters tandemly linked on chromosome five that demonstrate an unusual genomic organization similar to that of B-cell and T-cell receptor gene clusters. The alpha gene cluster is composed of 15 cadherin superfamily genes related to the mouse CNR genes and consists of 13 highly similar and 2 more distantly related coding sequences. The tandem array of 15 N-terminal exons, or variable exons, are followed by downstream C-terminal exons, or constant exons, which are shared by all genes in the cluster. The large, uninterrupted N-terminal exons each encode six cadherin ectodomains while the C-terminal exons encode the cytoplasmic domain. These neural cadherin-like cell adhesion proteins are integral plasma membrane proteins that most likely play a critical role in the establishment and function of specific cell-cell connections in the brain. Alternative splicing has been observed and additional variants have been suggested but their full-length nature has yet to be determined. [provided by RefSeq, Jul 2008]</p> |

Product images:



Circular map for RC211733



Western blot validation of overexpression lysate (Cat# [LY410542]) using anti-DDK antibody (Cat# [TA50011-100]). Left: Cell lysates from untransfected HEK293T cells; Right: Cell lysates from HEK293T cells transfected with RC211733 using transfection reagent MegaTran 2.0 (Cat# [TT210002]).