

Product datasheet for **RC211731**

POC5 (NM_152408) Human Tagged ORF Clone

Product data:

Product Type:	Expression Plasmids
Product Name:	POC5 (NM_152408) Human Tagged ORF Clone
Tag:	Myc-DDK
Symbol:	POC5
Synonyms:	C5orf37
Mammalian Cell Selection:	Neomycin
Vector:	pCMV6-Entry (PS100001)
E. coli Selection:	Kanamycin (25 ug/mL)



[View online »](#)

ORF Nucleotide Sequence:

>RC211731 ORF sequence
 Red=Cloning site Blue=ORF Green=Tags(s)

TTTTGTAATACGACTCACTATAGGGCGGCCGGAATTCGTCGACTGGATCCGGTACCGAGGAGATCTGCC
 GCC**CGGATCGCC**

ATGAAGTGGGAAGAATATGAAGAACTGCTTCATTATGCTATAGTGACTCCAAATATTGAACCTGTGCTT
 CACAGTCATCTCATCCTAAGGGAGAATTGGTGCCAGATGTCAGAAATTTCTACAATTCATGATATTCTTCA
 TAGTCAAGGAAATAACTCTGAAGTAAGAGAAAAGTGAATAGAAAGTTGGAAAAGGATGTGATTTCCATATT
 TCAAGTCATTCAAAGACAGATGAGTCACTACCAGTGTTATCGCCAAGGAAGCCTTCTCACCCAGTCATGG
 ATTTTTTCAGTTCACATCTTTAGCTGACTCTTCTCACCAGCAACAAATCTAGTCATACAGATGCCCA
 TGAAATACTTGTGAGCGATTTTCTGTTTCTGATGAAAACCTTCAGAAGATGGAAAATGTGCTTGATCTT
 TGGAGTTCAGGTCTTAAGACAAACATCATATCTGAACTAAGTAAATGGAGACTTAATTTTATTGACTGGC
 ACCGAATGGAAAATGAGAAAAGAGAAAAGAAAACATGCAGCACATTTAAAACAACGTGTAATCAGATCAA
 TGAAATGAAGGAGCTGCAAAAAACCTTTGAAATCTCCATTGGGAGAAAAGATGAGGTGATTTCTAGCTTG
 TCTCATGCCATAGGCAAGCAAAAAGGAAAAGATAGAGTTGATGAGAACATTCTTCCACTGGCGAATCGGCC
 ATGTCAGAGCCAGACAGGATGTTTATGAAGTAACTAGCTGACCAGTACTACCAGAGAACCTTTACTGAA
 GAAAGTCTGAAAAGTCTGGCGTTCCGTAGTGCAAAAGCAGTGGAAAAGATGTGGTAGAAAAGAGCTTGTCAA
 GCAAGAGCTGAAGAAGTTTGATCCAGATTTCCAATGATTATGAAGCCAAAGTTGCTATGTTATCTGGAG
 CTTTGGAAAATGCAAAAGCTGAGATTCAAAAGATGCAACATGAAAAGAGCACTTTGAAGATTCATGAA
 AAAAGCTTTTATGAGGGGTGATGTGCATTAATCTTGAAGCCATGACTATATTTCAAAAACAGAAATGAT
 GCAGGGATAGACTCCACAATAATAAAAAGGAAGAGTATGGTCTGGTGTCAAGGAAAAGAACATTCTG
 CTCATTTGGATCCTTCAGCTCCTCCGATGCCCTTACCAGTTACATCACCAGTCTGCCATCCCCACCAGC
 CGCCGTCCGAGGAGCCAGCGGACTGCCGTTCCCTCAGCTGCTTCGATGACTTCTACCAGGCTGCTTCC
 GCATCTTCTGTTACGTTCTGTTTCTGCTCTTGGTGCAGGATCTGCAGTACTGCTGCATCAGAAGAAA
 TGTATGTGCCAAGAGTTGTAACCTCTGCACAACAGAAAGCAGGAAGAAGTATTACAGCCCGGATCACAGG
 AAGATGTGATTTTGTCTTCAAAAAATAGAATTAGCAGCAGTTTAGCTATAATGGGAGTTTCTCCTCCCATG
 AGCTCAGTTGTTGTGGAAAACATCATCCAGTACAGTGCAAACCATTCTCAAGCAACTGCAGCAAAAT
 ATCCCCGACCATTATCCTGAAAGTAGTACCTCAGCTCCAGATCACTTGAACCAGATCAGCTCACAC
 CCAGTCTCTCACAAGTGTTCATTCCATAAAAAGTGGTTGAC

ACGCGTACGCGGCCGCTCGAGCAGAAACTCATCTCAGAAGAGGATCTGGCAGCAAATGATATCCTGGATT
 ACAAGGATGACGACGATAAGGTTTAA

Protein Sequence:

>RC211731 protein sequence
 Red=Cloning site Green=Tags(s)

MKWEYEELLHYAIVTPNIEPCASQSSHPKGLVPDVRISTIHDLHSQGNNSVRETAIEVGKGFDFHI
 SSSKTDDESSPVLSPRKPSHPVMDFFSSHLLADSSPATNSSHTDAHEILVSDFLVSDENLQKMENVLDL
 WSSGLKTNIISELKWRNFIDWHRMEMRKEKEKHAHLKQLCNQINELKELQKTFEISIGRKDEVISSL
 SHAIGKQKEKIELMRTFFHWRIGHVRARQDVYEGKLADQYYQRTLLKKVWVWRSVVQKQWKDVVERACQ
 ARAEEVCIQISNDYEAKVAMLSGALENKAEIQRMQHEKEHFEDSMKAFMRGVCALNLEAMTIFQNRND
 AGIDSTNNKKEEYGPVQKQKESAHLDPSAPPMLPVTSPLLPSPAAGVGGASATAVPSAASMTSTRAAS
 ASSVHVPVSALGAGSAATAASEEMYVPRVVTSAQQKAGRTITARITGRCDFASKNRISSSLAIMGVSPPM
 SSVVVEKHPVTVQTIPQATAAKYPRTIHPESSTSASRSLGTRSHTQSLTSVHSIKVVDD

TRTRPLEQKLISEEDLAANDILDYKDDDDKV

Chromatograms:

https://cdn.origene.com/chromatograms/mk6559_g01.zip

Restriction Sites:

Sgfl-MluI

Cloning Scheme:



ACCN: NM_152408

ORF Size: 1650 bp

OTI Disclaimer: The molecular sequence of this clone aligns with the gene accession number as a point of reference only. However, individual transcript sequences of the same gene can differ through naturally occurring variations (e.g. polymorphisms), each with its own valid existence. This clone is substantially in agreement with the reference, but a complete review of all prevailing variants is recommended prior to use. [More info](#)

OTI Annotation: This clone was engineered to express the complete ORF with an expression tag. Expression varies depending on the nature of the gene.

Components: The ORF clone is ion-exchange column purified and shipped in a 2D barcoded Matrix tube containing 10ug of transfection-ready, dried plasmid DNA (reconstitute with 100 ul of water).

- Reconstitution Method:
1. Centrifuge at 5,000xg for 5min.
 2. Carefully open the tube and add 100ul of sterile water to dissolve the DNA.
 3. Close the tube and incubate for 10 minutes at room temperature.
 4. Briefly vortex the tube and then do a quick spin (less than 5000xg) to concentrate the liquid at the bottom.
 5. Store the suspended plasmid at -20°C. The DNA is stable for at least one year from date of shipping when stored at -20°C.

Note: Plasmids are not sterile. For experiments where strict sterility is required, filtration with 0.22um filter is required.

RefSeq: [NM_152408.2](#), [NP_689621.2](#)

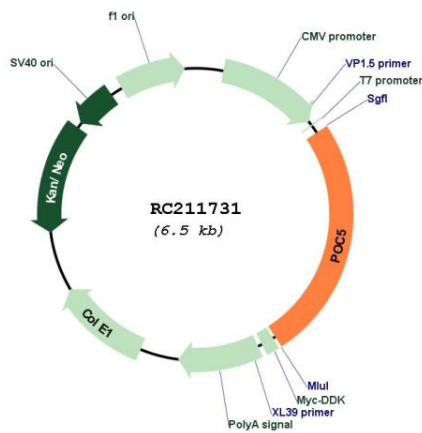
RefSeq Size: 1969 bp

RefSeq ORF: 1653 bp

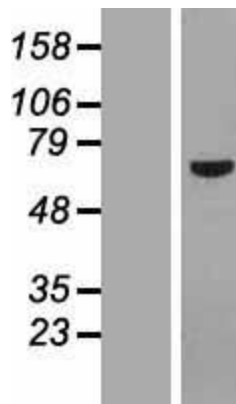
Locus ID: 134359

UniProt ID: [Q8NA72](#)
 Cytogenetics: 5q13.3
 MW: 60.8 kDa
 Gene Summary: Essential for the assembly of the distal half of centrioles, required for centriole elongation. [UniProtKB/Swiss-Prot Function]

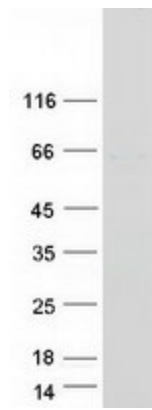
Product images:



Circular map for RC211731



Western blot validation of overexpression lysate (Cat# [LY407576]) using anti-DDK antibody (Cat# [TA50011-100]). Left: Cell lysates from untransfected HEK293T cells; Right: Cell lysates from HEK293T cells transfected with RC211731 using transfection reagent MegaTran 2.0 (Cat# [TT210002]).



Coomassie blue staining of purified POC5 protein (Cat# [TP311731]). The protein was produced from HEK293T cells transfected with POC5 cDNA clone (Cat# RC211731) using MegaTran 2.0 (Cat# [TT210002]).