

## Product datasheet for **RC211716**

### CD299 (CLEC4M) (NM\_214675) Human Tagged ORF Clone

#### Product data:

Product Type:	Expression Plasmids
Product Name:	CD299 (CLEC4M) (NM_214675) Human Tagged ORF Clone
Tag:	Myc-DDK
Symbol:	CD299
Synonyms:	CD299, LSIGN, CD209L, L-SIGN, DCSIGNR, HP10347, DC-SIGN2, DC-SIGNR, MGC47866, MGC129964
Mammalian Cell Selection:	Neomycin
Vector:	pCMV6-Entry (PS100001)
E. coli Selection:	Kanamycin (25 ug/mL)



[View online »](#)

**ORF Nucleotide Sequence:**

>RC211716 ORF sequence  
 Red=Cloning site Blue=ORF Green=Tags(s)

TTTTGTAATACGACTCACTATAGGGCGGCCGGAATTCGTCGACTGGATCCGGTACCGAGGAGATCTGCC  
 GCC**CGATCGCC**

ATGAGTGA**CTCCAAGGAACCAAGGGTGCAGCAGCTGGGCCTCCTGGAAGAAGATCCAACAACCAGTGGCA**  
**TCAGACTTTTTCCAAGAGACTTTCAATTCAGCAGATACATGGCCACAAGAGCTCTACAGGGTGTCTTGG**  
**CCATGGCGCCCTGGTGTGCAACTCCTCTCCTTCATGCTCTTGGCTGGGGTCTGGTGGCCATCCTTGTG**  
**CAAGTGTCCAAGGTCCCCAGCTCCCTAAGTCAGGAACAATCCGAGCAAGACGCAATCTACCAGAACCTGA**  
**CCCAGCTTAAAGCTGCAGTGGGTGAGCTCTCAGAGAAATCCAAGCTGCAGGAGATCTACCAGGAGCTGAC**  
**CCAGCTGAAGGCTGCAGTGGGTGAGTTGCCAGAGAAATCCAAGCTGCAGGAGATCTACCAGGAGCTGACC**  
**CGGCTGAAGGCTGCAGTGGGTGAGTTGCCAGAGAAATCCAAGCTGCAGGAGATCTACCAGGAGCTGACCC**  
**GGCTGAAGGCTGCAGTGGGTGAGTTGCCAGAGAAATCCAAGCTGCAGGAGATCTACCAGGAGCTGACCCG**  
**GCTGAAGGCTGCAGTGGGTGAGTTGCCAGAGAAATCCAAGCTGCAGGAGATCTACCAGGAGCTGACGGAG**  
**CTGAAGGCTGCAGTGGGTGAGTTGCCAGAGAAATCCAAGCTGCAGGAGATCTACCAGGAGCTGACCCAGC**  
**TGAAGGCTGCAGTGGGTGAGTTGCCAGACCAAGCAGCAGCAATCTATCAAGAAGTACCGATT**  
**GAAGACTGCATTTGAACGCCTGTGCCCGCACTGTCCCAAGGACTGGACATTTTCCAAGGAACTGTTAC**  
**TTCATGTCTAACTCCCAGCGAACTGGCAGACTCCGTCAACCGCTGCCAGGAAGTGAAGGCGCCAGCTCG**  
**TCGTAATCAAAGTGTGAGGAGCAGAATTCCTACAGCTGCAGACTCCAGGAGTAACCGCTTCTCCTG**  
**GATGGGACTTTCAGACCTAAATCAGGAAGGCACGTGGCAATGGGTGGACGGCTCACCTCTGTCACCCAGC**  
**TTCAGCGGTACTGGAACAGTGGAGAACCAACAATAGCGGAAATGAAGACTGTGCGGAATTTAGTGGA**  
**GTGGCTGGAACGACAATCGATGTGACGTTGACAATTACTGGATCTGCAAAAAGCCCGCAGCTGCTTCAG**  
**AGACGAA**

**ACGCGTACGCGGCCGCTCGAGCAGAACTCATCTCAGAAGAGGATCTGGCAGCAATGATATCCTGGATT**  
**ACAAGGATGACGACGATAAGGTTTAA**

**Protein Sequence:**

>RC211716 protein sequence  
 Red=Cloning site Green=Tags(s)

MSDSKEPRVQQLGLLEEDPTTSGIRLFPRDFQFQQIHGHKSSTGCLGHGALVLQLLSFMLLAGVLVAILV  
 QVSKVPSSLSQEQSEQDAIYQNLTLKAAVGELEKSKLQEIYQELTLKAAVGELEKSKLQEIYQELT  
 RLKAAVGELEKSKLQEIYQELTRLKAAVGELEKSKLQEIYQELTRLKAAVGELEKSKLQEIYQELTE  
 LKAAVGELEKSKLQEIYQELTLKAAVGELEPDQSKQQIYQELTDLKTAERLCRHCPCDWTFFQGNFY  
 FMSNSQRNWHDSVTACQEVRAQLVVIKTAEEQNFLQLQTSRSNRFSSWGLSDLNQEETWQWVDGSPSPS  
 FQRYWNSGEPNNSGNECAEFSGSGWVNDNRCDVDNYWICKKPAACFRDE

**TRTRPLEQKLISEEDLAANDILDYKDDDDKV**

**Chromatograms:**

[https://cdn.origene.com/chromatograms/mk6136\\_e07.zip](https://cdn.origene.com/chromatograms/mk6136_e07.zip)

**Restriction Sites:**

Sgfl-Mlul

**Cloning Scheme:**


**ACCN:** NM\_214675

**ORF Size:** 1197 bp

**OTI Disclaimer:** The molecular sequence of this clone aligns with the gene accession number as a point of reference only. However, individual transcript sequences of the same gene can differ through naturally occurring variations (e.g. polymorphisms), each with its own valid existence. This clone is substantially in agreement with the reference, but a complete review of all prevailing variants is recommended prior to use. [More info](#)

**OTI Annotation:** This clone was engineered to express the complete ORF with an expression tag. Expression varies depending on the nature of the gene.

**Components:** The ORF clone is ion-exchange column purified and shipped in a 2D barcoded Matrix tube containing 10ug of transfection-ready, dried plasmid DNA (reconstitute with 100 ul of water).

**Reconstitution Method:**

1. Centrifuge at 5,000xg for 5min.
2. Carefully open the tube and add 100ul of sterile water to dissolve the DNA.
3. Close the tube and incubate for 10 minutes at room temperature.
4. Briefly vortex the tube and then do a quick spin (less than 5000xg) to concentrate the liquid at the bottom.
5. Store the suspended plasmid at -20°C. The DNA is stable for at least one year from date of shipping when stored at -20°C.

**RefSeq:** [NM\\_214675.1](#), [NP\\_999840.1](#)

**RefSeq Size:** 1600 bp

**RefSeq ORF:** 1199 bp

**Locus ID:** 10332

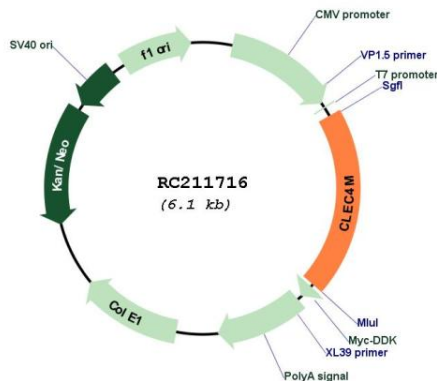
**Cytogenetics:** 19p13.2

**Protein Families:** Druggable Genome, Transmembrane

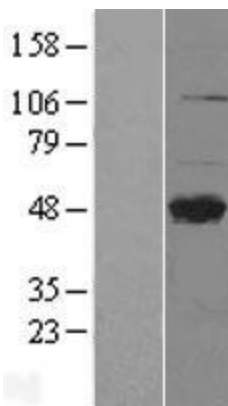
**MW:** 45.4 kDa

**Gene Summary:** This gene encodes a C-type lectin that functions in cell adhesion and pathogen recognition. This receptor recognizes a wide range of evolutionarily divergent pathogens with a large impact on public health, including tuberculosis mycobacteria, and viruses including Ebola, hepatitis C, HIV-1, influenza A, West Nile virus and the SARS-CoV acute respiratory syndrome coronavirus. The protein is organized into four distinct domains: a C-terminal carbohydrate recognition domain, a flexible tandem-repeat neck domain of variable length, a transmembrane region and an N-terminal cytoplasmic domain involved in internalization. This gene is closely related in terms of both sequence and function to a neighboring gene, CD209 (Gene ID: 30835), also known as DC-SIGN. The two genes differ in viral recognition and expression patterns, with this gene showing high expression in endothelial cells of the liver, lymph node and placenta. Polymorphisms in the tandem repeat neck domain are associated with resistance to SARS infection. [provided by RefSeq, May 2020]

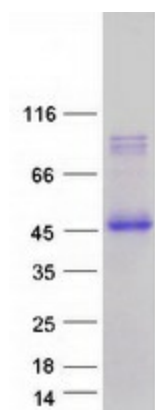
**Product images:**



Circular map for RC211716



Western blot validation of overexpression lysate (Cat# [LY403743]) using anti-DDK antibody (Cat# [TA50011-100]). Left: Cell lysates from untransfected HEK293T cells; Right: Cell lysates from HEK293T cells transfected with RC211716 using transfection reagent MegaTran 2.0 (Cat# [TT210002]).



Coomassie blue staining of purified CLEC4M protein (Cat# [TP311716]). The protein was produced from HEK293T cells transfected with CLEC4M cDNA clone (Cat# RC211716) using MegaTran 2.0 (Cat# [TT210002]).