

Product datasheet for **RC211714**

PRDM5 (NM_018699) Human Tagged ORF Clone

Product data:

Product Type:	Expression Plasmids
Product Name:	PRDM5 (NM_018699) Human Tagged ORF Clone
Tag:	Myc-DDK
Symbol:	PRDM5
Synonyms:	BCS2; PFM2
Mammalian Cell Selection:	Neomycin
Vector:	pCMV6-Entry (PS100001)
E. coli Selection:	Kanamycin (25 ug/mL)



[View online »](#)

ORF Nucleotide Sequence:

>RC211714 representing NM_018699
 Red=Cloning site Blue=ORF Green=Tags(s)

TTTTGTAATACGACTCACTATAGGGCGGCCGGAATTCGTCGACTGGATCCGGTACCGAGGAGATCTGCC
 GCC**CGCATCGCC**

ATGCTGGGCATGTACGTGCCGGACAGGTTCTCCCTGAAGTCTCCCGGTTTCAGGACGGCATGGGGCTCT
 ACACGGCCCGCAGAGTGCGAAAGGGTGAAGTTTCGGACCTTTGCTGGAGAGAAGAGAATGCCTGAAGA
 CTTGGATGAAAATATGGATTACAGGTTGATGTGGGAGTTTCGTGGGAGTAAGGGAGAAGTTTGTACATT
 TTGGATGCTACCAACCCACGGCACTCCAACCTGGCTTCGCTTCGTTTCATGAGGCACCATCTCAGGAGCAGA
 AGAACTTGGCTGCCATTCAAGAAGGAGAAAACATTTTCTATTTGGCAGTTGAAGATATAGAAACAGACAC
 GGAGCTTCTGATTGGCTACCTGGATAGTGACATGGAGGCTGAGGAGGAAGAACAGCAAATATGACAGTC
 ATCAAAGAAGGGGAAAGTTGAAAATCTAGAAGACAATCAACAGCGGGCAGAAAAGATCGCCTTGGCTGTA
 AAGAGGACTATGCTTGCCTCAATGTGAATCGAGTTTACCAGTGAGGATATTCTTGTGAGCATCTCCA
 GACATTGCACCAGAAACCCACAGAGGAGAAAGAATTTAAGTGCAAGAAGTGTGGGAAGAAATCCCAGTT
 AAGCAGGCTTTGCAAAGACATGTTCTTCAGTGCACAGCGAAAAGCAGTCTAAAGGAGTCTTCGCGAAGTT
 TTCAGTGTCTGTTTGAATTCTTCCTTCAGTTCAGCATCGAGTTTTGAGCAGCACCAGGAGACTTGCCG
 GGGGATGCCAGGTTTGTGTGCAAGGCTGACAGCTGTGAAAAGAGGCTGAAGAGCAAGGATGCCCTGAAA
 AGACACCAGGAAAATGTCCACACTGGAGATCCTAAGAAAAGCTTATATGTTTCAGTGTGCAATAAAAAGT
 GTTCTTCAGCATCAAGCCTACAGGAACATAGAAAGATTTCATGAGATATTTGATTGTCAAGAAATGATGAA
 GAAATTTATTTTCAGCTAATCAGCTAAAACGTCAATGATCACCCACTCAGAAAAACGACCCTATAATTGC
 GAGATTTGTAATAAGTCTTTCAAGAGGCTTGATCAAGTGGTGCTCACAAAGTAATACACAGCGAAGACA
 AACCTTACAAATGCAAACCTTTGTGAAAAGGGATTTGCCACAGAAATGTTTACAAGAATCATAAGAAGACA
 CCACTCTGAGGAGAGACCGTTCCAATGTGAAGAATGTAAAGCTTTGTTCCGGACCCATTTTCTTTACAG
 AGACACCTGCTAATACATAACAGTGAGAGGACTTCAAGTGCCATCACTGCGATGCTACCTTAAAGAGGA
 AGGATACATTAATGTTTCATGTCCAGGTGGTTCATGAAAGACACAAGAAGTATAGGTGTGAGCTATGTAA
 TAAGGCCTTTGTACACCTTCAGTGCTTAGAAGTCATAAGAAAACACATACAGGAGAAAAGGAGAAAATC
 TGTCCATATTGTGGCCAGAAATTTGCCAGCAGTGGTACACTCAGAGTTCATATCCGGAGCCACACAGGTG
 AGCGTCCCTATCAATGTCCTTACTGTGAAAAGGATTTCAGTAAAATGATGGACTGAAGATGCACATTTCG
 TACTCACACCAGGAGAGCCGTACAAGTGCTCAGAGTGCAAGGCCCTTCAGCCAGAAGCGAGGCTCG
 GATGAGCACAAGAGGACGCACACTGGAGAAAAGCCTTTTCAGTGTGATGTTTGTGATTTGGCTTTTAGCC
 TGAAGAAAATGCTGATTGACACAAAGATGACTCATAATCCAATCGTCCCCTGGCAGAATGCCAGTTTTG
 CCATAAGAAGTTTACAAGGAATGACTACCTCAAAGTGACATGGACAATATCCATGGTGTAGCTGACAGC

ACGCGTACGCGGCCGCTCGAGCAGAAACTCATCTCAGAAGAGGATCTGGCAGCAAATGATATCCTGGATT
 ACAAGGATGACGACGATAAGGTTTAA

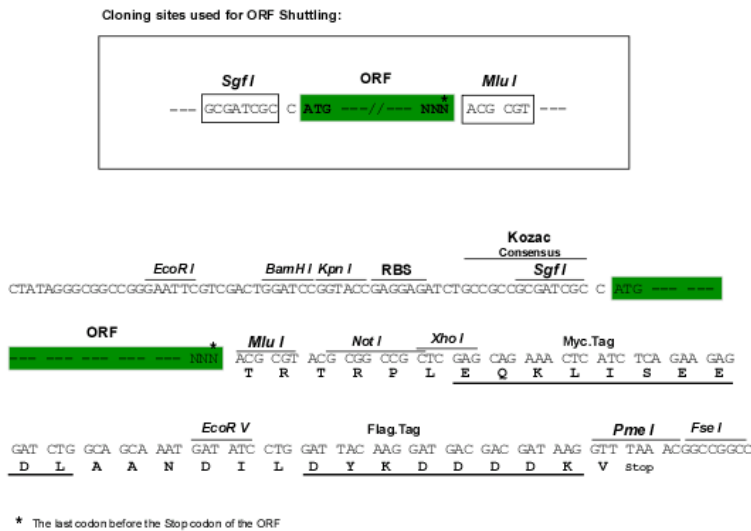
Protein Sequence:

>RC211714 representing NM_018699
 Red=Cloning site Green=Tags(s)

MLGMYVPDRFLSKSSRVQDGMGLYTARRVRKGEKFGPFAGEKRPEDLDENMDYRLMWEVRGSKGEVLYI
 LDATNPRHSNWLRFVHEAPSQEQKLAAIQEGENIFYLAVEDIETDELLIGYLDSDMEAEQEQIMTV
 IKEGEVENSRRQSTAGRKDRLGCKEDYACPOCESSFTSEDILAHLQTLHQKPTTEEKFKCKNCGKFPV
 KQALQRHVLQCTAKSSLKESSRFQCSVCNSSFSASSFEQHQETCRGDARFVCKADSCGKRLKSKDALK
 RHQENVHTGDPKPKLICSVCNKKCSSASSLQEHKRIHEIFDCQECMKKFI SANQLKRHMITHSEKRPYNC
 EICNKSFKRLDQVGAHKVIHSEDKPYKCKL CGKGF AHRNRYKNHKKTHSEERPFQCEEKALFRTPFSLQ
 RHLLIHNSERTFKCHCDATFKRKDTLNVHVQVVERHKKYRCELCNKAFVTPSVLRSHKKTHTGEKEKI
 CPYCGQKFASSGTLRVHIRSHTGERPYQCPYCEKGF SKNDGLKMHIRTHTREKPYKSECSKAFSQKRL
 DEHKRTHTEKPFQCDVCDLAFSLKMLIRHKMTHNPNRPLAECQFCHKKFTRNDYLVKMHMDNIHGVA

TRTRPLEQKLISEEDLAANDILDYKDDDDKV

Chromatograms: https://cdn.origene.com/chromatograms/mk8024_h05.zip
 Restriction Sites: SgfI-MluI
 Cloning Scheme:



ACCN: NM_018699
 ORF Size: 1890 bp

OTI Disclaimer: The molecular sequence of this clone aligns with the gene accession number as a point of reference only. However, individual transcript sequences of the same gene can differ through naturally occurring variations (e.g. polymorphisms), each with its own valid existence. This clone is substantially in agreement with the reference, but a complete review of all prevailing variants is recommended prior to use. [More info](#)

OTI Annotation: This clone was engineered to express the complete ORF with an expression tag. Expression varies depending on the nature of the gene.

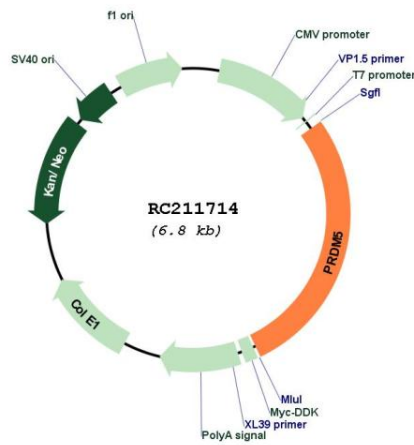
Components: The ORF clone is ion-exchange column purified and shipped in a 2D barcoded Matrix tube containing 10ug of transfection-ready, dried plasmid DNA (reconstitute with 100 ul of water).

- Reconstitution Method:
1. Centrifuge at 5,000xg for 5min.
 2. Carefully open the tube and add 100ul of sterile water to dissolve the DNA.
 3. Close the tube and incubate for 10 minutes at room temperature.
 4. Briefly vortex the tube and then do a quick spin (less than 5000xg) to concentrate the liquid at the bottom.
 5. Store the suspended plasmid at -20°C. The DNA is stable for at least one year from date of shipping when stored at -20°C.

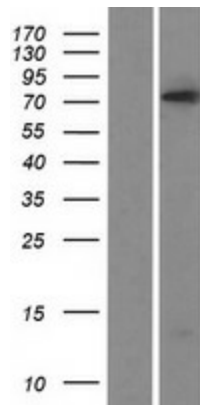
RefSeq: [NM_018699.4](#)
 RefSeq Size: 2492 bp
 RefSeq ORF: 1893 bp

Locus ID: 11107
UniProt ID: [Q9NQX1](#)
Cytogenetics: 4q27
Domains: SET, zf-C2H2
Protein Families: Transcription Factors
MW: 72.9 kDa
Gene Summary: The protein encoded by this gene is a transcription factor of the PR-domain protein family. It contains a PR-domain and multiple zinc finger motifs. Transcription factors of the PR-domain family are known to be involved in cell differentiation and tumorigenesis. [provided by RefSeq, Jul 2008]

Product images:



Circular map for RC211714



Western blot validation of overexpression lysate (Cat# [LY412894]) using anti-DDK antibody (Cat# [TA50011-100]). Left: Cell lysates from untransfected HEK293T cells; Right: Cell lysates from HEK293T cells transfected with RC211714 using transfection reagent MegaTran 2.0 (Cat# [TT210002]).