

Product datasheet for RC211711

SLURP2 (NM_177458) Human Tagged ORF Clone

Product data:

Product Type: Expression Plasmids
Product Name: SLURP2 (NM_177458) Human Tagged ORF Clone
Tag: Myc-DDK
Symbol: SLURP2
Synonyms: SLURP-2
Mammalian Cell Selection: Neomycin
Vector: pCMV6-Entry (PS100001)
E. coli Selection: Kanamycin (25 ug/mL)
ORF Nucleotide Sequence: >RC211711 representing NM_177458
Red=Cloning site Blue=ORF Green=Tags(s)

TTTTGTAATACGACTCACTATAGGGCGGCCGGAATTCGTCGACTGGATCCGGTACCGAGGAGATCTGCC
GCC**CGATCGCC**

ATGCAGCTCGGCACTGGGCTCCTGCTGGCCGCGTCTGAGCCTGCAGCTGGCTGCAGCCGAAGCCATAT
GGTGTCAACAGTGCACGGGCTTCGGAGGGTCTCCATGGATCCAGATGCCTGAGGGACTCCACCCACTG
TGTCAACACTGCCACCCGGTCTCAGCAACACCGAGGATTTGCCTCTGGTACCAAGATGTGCCACATA
GGCTGCCCGATATCCCCAGCCTGGGCCCTGGGCCCTACGTATCCATCGTTGCTGCCAGACCAGCCTCT
GCAACCATGAC

ACGCGTACGCGGCCGCTCGAGCAGAAACTCATCTCAGAAGAGGATCTGGCAGCAAATGATATCCTGGATT
ACAAGGATGACGACGATAAGGTTTAA

Protein Sequence: >RC211711 representing NM_177458
Red=Cloning site Green=Tags(s)
MQLGTGLLLAAVLSLQLAAAEAIWCHQCTGFGGCSHGSRCLRSTHCVTATTRVLSNTEDLPLVTKMCHI
GCPDIPSLGLGPYYSIACCQTSKCNHD

TRTRPLEQKLISEEDLAANDILDYKDDDDKV

Chromatograms: https://cdn.origene.com/chromatograms/mk6234_h01.zip

Restriction Sites: SgfI-MluI



[View online »](#)

Cloning Scheme:


ACCN: NM_177458

ORF Size: 291 bp

OTI Disclaimer: The molecular sequence of this clone aligns with the gene accession number as a point of reference only. However, individual transcript sequences of the same gene can differ through naturally occurring variations (e.g. polymorphisms), each with its own valid existence. This clone is substantially in agreement with the reference, but a complete review of all prevailing variants is recommended prior to use. [More info](#)

OTI Annotation: This clone was engineered to express the complete ORF with an expression tag. Expression varies depending on the nature of the gene.

Components: The ORF clone is ion-exchange column purified and shipped in a 2D barcoded Matrix tube containing 10ug of transfection-ready, dried plasmid DNA (reconstitute with 100 ul of water).

- Reconstitution Method:**
1. Centrifuge at 5,000xg for 5min.
 2. Carefully open the tube and add 100ul of sterile water to dissolve the DNA.
 3. Close the tube and incubate for 10 minutes at room temperature.
 4. Briefly vortex the tube and then do a quick spin (less than 5000xg) to concentrate the liquid at the bottom.
 5. Store the suspended plasmid at -20°C. The DNA is stable for at least one year from date of shipping when stored at -20°C.

RefSeq: [NM_177458.3](#)

RefSeq Size: 589 bp

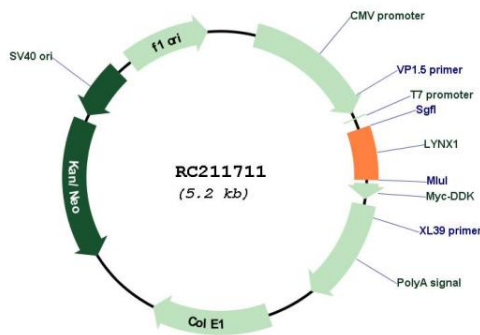
RefSeq ORF: 294 bp

Locus ID: 432355

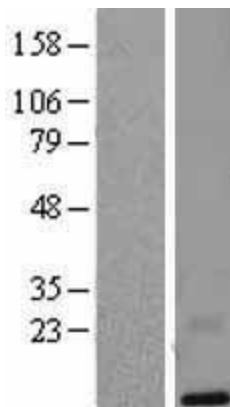
UniProt ID: [P0DP57](#)
 Cytogenetics: 8q24.3
 MW: 10 kDa

Gene Summary: This gene encodes a novel, secreted member of the Ly6/uPAR (LU) superfamily of proteins containing the unique three-finger LU domain. This gene is mainly expressed in epithelial cells, including skin and keratinocytes, and is up-regulated in psoriatic skin lesions, suggesting its involvement in the pathophysiology of psoriasis. Alternatively spliced transcript variants have been found for this gene. Read-through transcription from the neighboring upstream gene (LYNX1) generates naturally-occurring transcripts (LYNX1-SLURP2) that encode a fusion protein comprised of sequence sharing identity with each individual gene product. [provided by RefSeq, Sep 2017]

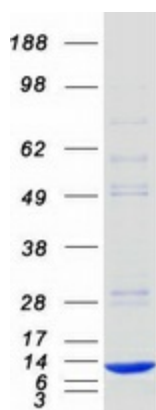
Product images:



Circular map for RC211711



Western blot validation of overexpression lysate (Cat# [LY406174]) using anti-DDK antibody (Cat# [TA50011-100]). Left: Cell lysates from untransfected HEK293T cells; Right: Cell lysates from HEK293T cells transfected with RC211711 using transfection reagent MegaTran 2.0 (Cat# [TT210002]).



Coomassie blue staining of purified SLURP2 protein (Cat# [TP311711]). The protein was produced from HEK293T cells transfected with SLURP2 cDNA clone (Cat# RC211711) using MegaTran 2.0 (Cat# [TT210002]).