

Product datasheet for RC211691

IL36RN (NM_012275) Human Tagged ORF Clone

Product data:

Product Type: Expression Plasmids

Product Name: IL36RN (NM_012275) Human Tagged ORF Clone

Tag: Myc-DDK

Symbol: IL36RN

Synonyms: FIL1; FIL1(DELTA); FIL1D; IL-36Ra; IL1F5; IL1HY1; IL1L1; IL1RP3; IL36RA; PSORP; PSORS14

Mammalian Cell Selection: Neomycin

Vector: pCMV6-Entry (PS100001)

E. coli Selection: Kanamycin (25 ug/mL)

ORF Nucleotide Sequence: >RC211691 representing NM_012275
Red=Cloning site Blue=ORF Green=Tags(s)

TTTGTAAATACGACTCACTATAGGGCGGCCGGGAATTCGTCGACTGGATCCGGTACCGAGGAGATCTGCC
GCC**CGATCGCC**

ATGGTCCTGAGTGGGGCTGTGCTTCGAATGAAGGACTCGGCATTGAAGGTGCTTTATCTGCATAATA
ACCAGTTCTAGCTGGAGGCTGCATGCAGGAAGGTCAATAAAGGTGAAGAGATCAGCGTGGTCCCCAA
TCGGTGGCTGGATGCCAGCCTGTCCCCGTCATCCTGGGTGTCCAGGTGAAGCCAGTCCTGTATGT
GGGTGGGCAGGAGCCGACTCTAACACTAGAGCCAGTGAACATCATGGAGCTCTATCTGGTGCCAAGG
AATCCAAGAGCTTCACTTCTACCGCGGGACATGGGGCTCACCTCCAGTTCGAGTCGGCTGCCTACCC
GGCTGGTTCTGTGACGGTGCCTGAAGCCGATCAGCCTGTGACTCACCCAGCTTCCCGAGAATGGT
GGCTGGAATGCCCATCACAGACTTCTACTTCCAGCAGTGTGAC

ACGCGTACGCGGCCGCTCGAGCAGAACTCATCTCAGAAGAGGATCTGGCAGCAAATGATATCTGGATT
ACAAGGATGACGACGATAAGGTTAA

Protein Sequence: >RC211691 representing NM_012275
Red=Cloning site Green=Tags(s)

MVLSGALCFRMKDSALKVLYLHNNQLLAGLHAGKVIKGGEEISVVPNRWLDASLSPVILGVQGGSQLSCLSC
GVGQEPTLTLEPVNIMELYLGAKESKSTFYRRDMLTSSFESAAYPGWFVLCVPEADQPVRLTQLPENG
GWNAPITDFYFQQCD

TRTRPLEQKLISEEDLAANDILDYKDDDDK

Chromatograms: https://cdn.origene.com/chromatograms/mk6110_f02.zip



[View online »](#)

UniProt ID: [Q9UBH0](#)

Cytogenetics: 2q14.1

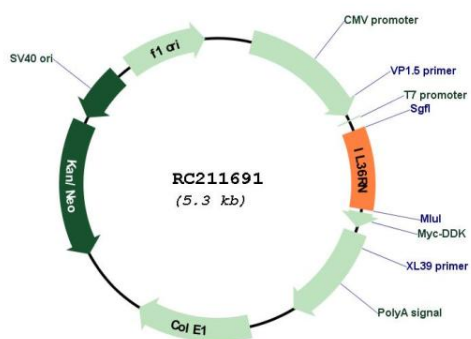
Domains: IL1

Protein Families: Druggable Genome, Secreted Protein

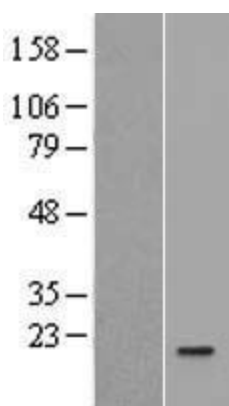
MW: 16.8 kDa

Gene Summary: The protein encoded by this gene is a member of the interleukin 1 cytokine family. This cytokine was shown to specifically inhibit the activation of NF-kappaB induced by interleukin 1 family, member 6 (IL1F6). This gene and eight other interleukin 1 family genes form a cytokine gene cluster on chromosome 2. Two alternatively spliced transcript variants encoding the same protein have been reported. [provided by RefSeq, Jul 2008]

Product images:



Circular map for RC211691



Western blot validation of overexpression lysate (Cat# [LY402185]) using anti-DDK antibody (Cat# [TA50011-100]). Left: Cell lysates from untransfected HEK293T cells; Right: Cell lysates from HEK293T cells transfected with RC211691 using transfection reagent MegaTran 2.0 (Cat# [TT210002]).



Coomassie blue staining of purified IL36RN protein (Cat# [TP311691]). The protein was produced from HEK293T cells transfected with IL36RN cDNA clone (Cat# RC211691) using MegaTran 2.0 (Cat# [TT210002]).