

Product datasheet for RC211674

TMEM182 (NM_144632) Human Tagged ORF Clone

Product data:

Product Type: Expression Plasmids
Product Name: TMEM182 (NM_144632) Human Tagged ORF Clone
Tag: Myc-DDK
Symbol: TMEM182
Mammalian Cell Selection: Neomycin
Vector: pCMV6-Entry (PS100001)
E. coli Selection: Kanamycin (25 ug/mL)
ORF Nucleotide Sequence: >RC211674 ORF sequence
Red=Cloning site Blue=ORF Green=Tags(s)

TTTTGTAATACGACTCACTATAGGGCGGCCGGAATTCGTCGACTGGATCCGGTACCGAGGAGATCTGCC
GCC**CGATCGCC**

ATGAGACTAAATATCGCTATCTTCTTTGGAGCTCTCTTTGGTGCTTTGGGGGTGTTACTCTTTTTGGTGG
CTTTTGGATCGGATTATTGGCTTCTTGCACCTGAAGTGGGGAGATGTTCCAGGTGAAAAGAATATAGAGAA
CGTCACCTTTTACCATGAAGGGTTCTTCTGGAGGTGTTGGTTTAAATGGGATTGTGGAAGAGAATGACTCC
AATATTTGGAAGTTCTGGTACACCAATCAGCCACCGTCCAAGAAGTGCACACATGCTTACCTGTCTCCGT
ACCCCTTCATGAGAGGCGAGCACAACTCGACCTCCTATGACTCTGCAGTATTTACCGTGGTTCTGGGC
AGTCTGATGCTCCTGGGGTAGTTGCTGTAGTCATCGCAAGCTTTTGTATCATCTGTGCAGCCCCCTTC
GCCAGCCATTTTCTACAAAGCTGGGGGAGGCTCATATATTGCTGCAGGCATCCTATTTTCATTGGTGG
TGATGCTGTATGTCATCTGGGTCCAGGCAGTGGCTGACATGGAAAGCTACCGAAACATGAAAATGAAGGA
CTGCCTGGATTTACCCCTTCTGTTCTGTATGGCTGGTCAATTTTCTGGCCCCAGCTGGGATATTTTTT
TCTTTGCTAGCTGGATTACTATTTCTGGTTGTTGGACGGCATATTCAGATACATCAC

ACGCGTACGCGGCCGCTCGAGCAGAACTCATCTCAGAAGAGGATCTGGCAGCAATGATATCCTGGATT
ACAAGGATGACGACGATAAGGTTTAA

Protein Sequence: >RC211674 protein sequence
Red=Cloning site Green=Tags(s)

MRLNIAIFFGALFGALGVLLFLVAFGSDYWLLATEVGRCSGEKNIENVTFHHEGFFWRCWFNGIVEENDS
NIWKFWYTNQPPSKNCTHAYLSPYPFMRGEHNSTSYDSAVIYRGFWAVLMLLGVVAVVIASFLIICAAPF
ASHFLYKAGGGSYIAAGILFSLVVMLYIIVVQAVADMESYRNMKMKDCLDFTPSVLYGWSFFLAPAGIFF
SLLAGLLFLVVGRHIQIHH

TRTRPLEQKLISEEDLAANDILDYKDDDDKV



[View online »](#)

Chromatograms: https://cdn.origene.com/chromatograms/mk6467_a01.zip

Restriction Sites: SgfI-MluI

Cloning Scheme:



ACCN: NM_144632

ORF Size: 687 bp

OTI Disclaimer: The molecular sequence of this clone aligns with the gene accession number as a point of reference only. However, individual transcript sequences of the same gene can differ through naturally occurring variations (e.g. polymorphisms), each with its own valid existence. This clone is substantially in agreement with the reference, but a complete review of all prevailing variants is recommended prior to use. [More info](#)

OTI Annotation: This clone was engineered to express the complete ORF with an expression tag. Expression varies depending on the nature of the gene.

Components: The ORF clone is ion-exchange column purified and shipped in a 2D barcoded Matrix tube containing 10ug of transfection-ready, dried plasmid DNA (reconstitute with 100 ul of water).

Reconstitution Method:

1. Centrifuge at 5,000xg for 5min.
2. Carefully open the tube and add 100ul of sterile water to dissolve the DNA.
3. Close the tube and incubate for 10 minutes at room temperature.
4. Briefly vortex the tube and then do a quick spin (less than 5000xg) to concentrate the liquid at the bottom.
5. Store the suspended plasmid at -20°C. The DNA is stable for at least one year from date of shipping when stored at -20°C.

RefSeq: [NM_144632.4](#), [NP_653233.4](#)

RefSeq Size: 3588 bp

RefSeq ORF: 690 bp

Locus ID: 130827

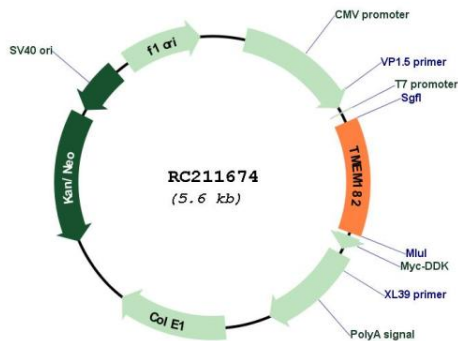
UniProt ID: [Q6ZP80](#)

Cytogenetics: 2q12.1

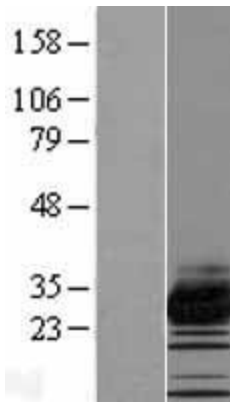
Protein Families: Transmembrane

MW: 25.8 kDa

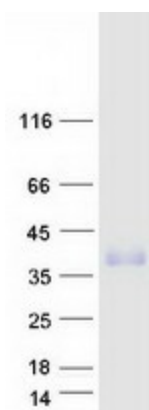
Product images:



Circular map for RC211674



Western blot validation of overexpression lysate (Cat# [LY408262]) using anti-DDK antibody (Cat# [TA50011-100]). Left: Cell lysates from untransfected HEK293T cells; Right: Cell lysates from HEK293T cells transfected with RC211674 using transfection reagent MegaTran 2.0 (Cat# [TT210002]).



Coomassie blue staining of purified TMEM182 protein (Cat# [TP311674]). The protein was produced from HEK293T cells transfected with TMEM182 cDNA clone (Cat# RC211674) using MegaTran 2.0 (Cat# [TT210002]).