

Product datasheet for **RC211669**

CACNB2 (NM_201571) Human Tagged ORF Clone

Product data:

Product Type:	Expression Plasmids
Product Name:	CACNB2 (NM_201571) Human Tagged ORF Clone
Tag:	Myc-DDK
Symbol:	CACNB2
Synonyms:	CAB2; CACNLB2; CAVB2; MYSB
Mammalian Cell Selection:	Neomycin
Vector:	pCMV6-Entry (PS100001)
E. coli Selection:	Kanamycin (25 ug/mL)



[View online »](#)

ORF Nucleotide
Sequence:

>RC211669 representing NM_201571
Red=Cloning site Blue=ORF Green=Tags(s)

TTTTGTAATACGACTCACTATAGGGCGGCCGGAATTCGTCGACTGGATCCGGTACCGAGGAGATCTGCC
GCC**CGGATCGCC**

ATGAATCAGGGGAGTGGACTGGACCTGCTGAAGATCTCATATGGAAAAGGAGCCAGAAGGAAAAACAGAT
TTAAAGGATCTGATGGAAGCACGTCATCTGATACTACCTCAAATAGTTTTGTTCCGCCAGGGTTCGGCAGA
CTCCTACACTAGCCGTCCATCCGATTCCGATGTATCTCTGGAGGAGGACCGGGAGGCAGTGCAGAGAA
GCGGAGCGGCAGGCCAGGCACAGTTGGAAAAAGCAAAGCAAAGCCCGTTGCATTTGCGGTTCCGGACAA
ATGTCAGCTACAGTGGGCCCATGAAGATGATGTTCCAGTGCCTGGCATGGCCATCTCATTCAAGCAAA
AGATTTTCTGCATGTTAAGGAAAAATTTAAACAATGACTGGTGGATAGGGCGATTGGTAAAAGAAGGCTGT
GAAATCGGATTCATTCCAAGCCAGTCAAACAGAAAACATGAGGCTGCAGCATGAACAGAGAGCCAAGC
AAGGGAAATTCCTACTCCAGTAAATCAGGAGGAAATTCATCATCCAGTTTGGGTGACATAGTACCTAGTTC
CAGAAAATCAACACCTCCATCATCTGCTATAGACATAGATGCTACTGGCTTAGATGCAGAAGAAAATGAT
ATTCCAGCAAACCACCGCTCCCTAAACCCAGTGCAAACAGTGTAAACGTACCCCACTCCAAAGAGAAAA
GAATGCCCTTCTTTAAGAAGACAGAGCACACTCCTCCGTATGATGTGGTACCTTCCATGCCAGCAGTGGT
CCTAGTGGGCCCTTCTCTGAAGGGCTACAGGTCACAGATATGATGCAAAAAGCGCTGTTTGATTTTTTA
AAACACAGATTTGAAGGGCGGATATCCATCACAAGGGTCAACCGCTGACATCTCGCTTGCCAAACGCTCGG
TATTAACAATCCAGTAAGCACGCAATAATAGAAAGTCCAACACAAGTCAAGCTTAGCGGAAGTTCA
GAGTGAATCGAAAGGATTTTTGAACTTGAAGAACATTGCAGTTGGTGGTCTTGACGCGGATACAATT
AATCATCCAGCTCAACTCAGTAAACCTCCTTGGCCCCATTATAGTATATGTAAGATTTCTTCTCCTA
AGGTTTTACAAGGTTAATAAAAATCTCGAGGGAATCTCAAGCTAAACACCTCAAGTCCAGATGGTATGC
AGCTGATAAACTGGCTCAGTGTCTCCAGAGCTGTTTCGATGTGATCTTGGATGAGAACCAGCTTGAGGAT
GCCTGTGAGCACCTTGCCGACTATCTGGAGGCCTACTGGAAGGCCACCCATCCTCCAGCAGTAGCCTCC
CCAACCTCTCCTTAGCCGTACATTAGCCACTTCAAGTCTGCCTCTTAGCCCCACCTAGCCTCTAATTC
ACAGGGTTCTCAAGGTGATCAGAGGACTGATCGCTCCGCTCCTATCCGTTCTGCTTCCAAGCTGAAGAA
GAACCTAGTGTGAACCAGTCAAGAAATCCCAGCACCGCTCTTCTCCTCAGCCCCACACCACAACCATC
GCAGTGGGACAAGTCGCGGCCTCTCCAGGCAAGAGACATTTGACTCGGAAACCCAGGAGAGTCGAGACTC
TGCTACGTAGAGCCAAAGGAAGATTATCCCATGACCACGTGGACCACTATGCCTCACACCGTGACCAC
AACCACAGAGACGAGACCACGGGAGCAGTGACCACAGACACAGGGAGTCCCGGCACCGTCCCGGGACG
TGGATCGAGAGCAGGACCACAACGAGTGCAACAAGCAGCGCAGCCGTATAAATCCAAGGATCGCTACTG
TGAAAAGGATGGAGAAGTATCAAAAAACGGAATGAGGCTGGGGAGTGGAAACAGGGATGTTTACATC
CGCAA

ACGCGTACGCGGCCGCTCGAGCAGAAACTCATCTCAGAAGAGGATCTGGCAGCAAATGATATCCTGGATT
ACAAGGATGACGACGATAAGGTTTAA

Protein Sequence: >RC211669 representing NM_201571
 Red=Cloning site Green=Tags(s)

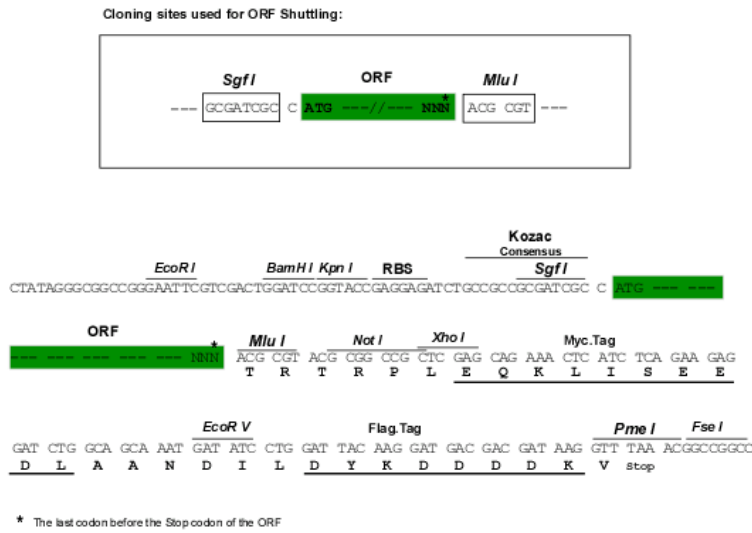
MNQGSGLDLLKISYKGGARRKNRFKGSDDSTTSNSFVVRQGSADSYTSRPSDSVLSLEEDREAVRRE
 AERQAQALEKAKTKPVAFVVRTNVSYSAAHEDDVPVPGMAISFEAKDFLHVKEKFNNDWWIGRLVKEGC
 EIGFIPSPVKLENMRLQHEQRAKQKGFYSKSGNSSSSLGDIVPSSRKSTPPSSAIDIDATGLDAEEND
 IPANHRSPKPSANSVTSPHSKEKRMPFFKKEHTHTPPYDVVPSMRPVVLVGPSPKGYEVTDMMQKALFDL
 KHRFEGRISITRVTADISLAKRSVLNPNPSKHAIERSNTRSSLAEVQSEIERIFELARTLQLVVLADATI
 NHPAQLSKTSLAPIIVYVKISSPKVLQRLIKSRGKSQAKHLNVQMAADKLAQCPELFDVILDENQLED
 ACEHLADYLEAYWKATHPPSSSLPNLLSRTLATSSLPLSPTLASNSQGSQDQRTDRSAPIRSASQAE
 EPSVEPVKKSQHRSSSSAPHNHRSRGTSRGLSRQETFDSQESRDSAYVEPKEDYSHDHVDHYASHRDH
 NHRDETHGSSDHRHRESRHRSDVDREQDHNECNKQRSRHKSKDRYCEKDGEVISKKRNEAGEWNRDVYI
 RQ

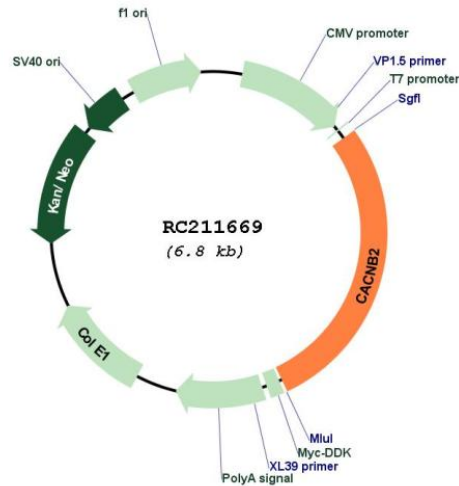
TRTRPLEQKLISEEDLAANDILDYKDDDDKV

Chromatograms: https://cdn.origene.com/chromatograms/mk8070_f03.zip

Restriction Sites: SgfI-MluI

Cloning Scheme:



Plasmid Map:


ACCN: NM_201571

ORF Size: 1896 bp

OTI Disclaimer: The molecular sequence of this clone aligns with the gene accession number as a point of reference only. However, individual transcript sequences of the same gene can differ through naturally occurring variations (e.g. polymorphisms), each with its own valid existence. This clone is substantially in agreement with the reference, but a complete review of all prevailing variants is recommended prior to use. [More info](#)

OTI Annotation: This clone was engineered to express the complete ORF with an expression tag. Expression varies depending on the nature of the gene.

Components: The ORF clone is ion-exchange column purified and shipped in a 2D barcoded Matrix tube containing 10ug of transfection-ready, dried plasmid DNA (reconstitute with 100 ul of water).

Reconstitution Method:

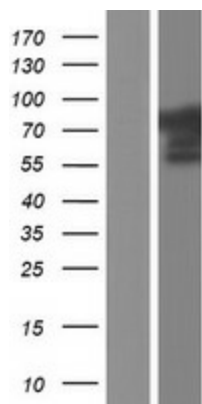
1. Centrifuge at 5,000xg for 5min.
2. Carefully open the tube and add 100ul of sterile water to dissolve the DNA.
3. Close the tube and incubate for 10 minutes at room temperature.
4. Briefly vortex the tube and then do a quick spin (less than 5000xg) to concentrate the liquid at the bottom.
5. Store the suspended plasmid at -20°C. The DNA is stable for at least one year from date of shipping when stored at -20°C.

RefSeq: [NM_201571.4](#)

RefSeq Size: 3301 bp

RefSeq ORF:	1899 bp
Locus ID:	783
UniProt ID:	Q08289
Cytogenetics:	10p12.33-p12.31
Protein Families:	Druggable Genome, Ion Channels: Other
Protein Pathways:	Arrhythmogenic right ventricular cardiomyopathy (ARVC), Cardiac muscle contraction, Dilated cardiomyopathy, Hypertrophic cardiomyopathy (HCM), MAPK signaling pathway
MW:	70.7 kDa
Gene Summary:	This gene encodes a subunit of a voltage-dependent calcium channel protein that is a member of the voltage-gated calcium channel superfamily. The gene product was originally identified as an antigen target in Lambert-Eaton myasthenic syndrome, an autoimmune disorder. Mutations in this gene are associated with Brugada syndrome. Alternatively spliced variants encoding different isoforms have been described. [provided by RefSeq, Feb 2013]

Product images:



Western blot validation of overexpression lysate (Cat# [LY404469]) using anti-DDK antibody (Cat# [TA50011-100]). Left: Cell lysates from untransfected HEK293T cells; Right: Cell lysates from HEK293T cells transfected with RC211669 using transfection reagent MegaTran 2.0 (Cat# [TT210002]).