

## Product datasheet for **RC211667**

### **GCNT1 (NM\_001097635) Human Tagged ORF Clone**

#### **Product data:**

Product Type:	Expression Plasmids
Product Name:	GCNT1 (NM_001097635) Human Tagged ORF Clone
Tag:	Myc-DDK
Symbol:	GCNT1
Synonyms:	C2GNT; C2GNT-L; C2GNT1; G6NT; NACGT2; NAGCT2
Mammalian Cell Selection:	Neomycin
Vector:	pCMV6-Entry (PS100001)
E. coli Selection:	Kanamycin (25 ug/mL)



[View online »](#)

**ORF Nucleotide Sequence:**

>RC211667 representing NM\_001097635  
 Red=Cloning site Blue=ORF Green=Tags(s)

TTTTGTAATACGACTCACTATAGGGCGGCCGGAATTCGTCGACTGGATCCGGTACCGAGGAGATCTGCC  
 GCC**CGCATCGCC**

ATGCTGAGGACGTTGCTGCGAAGGAGACTTTTTCTTATCCCACCAAATACTACTTTATGGTTCTTGTTT  
 TATCCCTAATCACCTTCTCCGTTTTAAGGATTCATCAAAAGCCTGAATTTGTAAGTGTGACACACTTGGA  
 GCTTGCTGGGGAGAATCCTAGTAGTGATATTAATTGCACCAAAGTTTTACAGGGTATGTAATGAAATC  
 CAAAAGGTAAAGCTTGAGATCCTAACAGTGAAATTTAAAAAGCGCCCTCGGTGGACACCTGACACTATA  
 TAAACATGACCAGTGACTGTTCTTTTCATCAAGAGACGCAAATATATTGTAGAACCCTTAGTAAAGA  
 AGAGGCGGAGTTTCCAATAGCATATTCTATAGTGGTTCATCACAAGATTGAAATGCTTGACAGGCTGCTG  
 AGGGCCATCTATATGCCTCAGAATTTCTATTGCATTCATGTGGACACAAAATCCGAGGATTCCTATTTAG  
 CTGCAGTGATGGGCATCGCTTCTGTTTTAGTAATGTCTTTGTGGCCAGCCGATTGGAGAGTGTGGTTTA  
 TGCATCGTGGAGCCGGTTCAGGCTGACCTCAACTGCATGAAGGATCTCTATGCAATGAGTGCAAACCTGG  
 AAGTACTTGATAAATCTTTGTGGTATGGATTTTCCCATTAACCAACCTAGAAAATTGTCAGGAAGCTCA  
 AGTTGTTAATGGGAGAAAACAACCTGGAACCGGAGAGGATGCCATCCCATAAAGAAGAAAGTGGAGAA  
 GCGGTATGAGGTCGTTAATGAAAGCTGACAAACACAGGGACTGTCAAAATGCTTCTCCACTCGAAACA  
 CCTCTCTTTTCTGGCAGTGCCTACTTCTGTGTCAGTAGGGAGTATGTGGGTATGTACTACAGAATGAAA  
 AAATCCAAAAGTTGATGGAGTGGGCACAAGACACATACAGCCCTGATGAGTATCTCTGGGCCACCATCCA  
 AAGGATTCCTGAAGTCCCGGCTCACTCCCTGCCAGCCATAAGTATGATCTGTCTGACATGCAAGCAGTT  
 GCCAGGTTTGTCAAGTGGCAGTACTTTGAGGGTATGTTTCCAAGGTGCTCCCTACCCGCCCTGCGATG  
 GAGTCCATGTGCGCTCAGTGTGCATTTTCGGAGCTGGTACTTGAAGTGGATGCTGCGCAACACCACTT  
 GTTTGCCAATAAGTTTGACGTGGATGTTGACCTTTGCCATCCAGTGTGGATGAGCATTGAGACAC  
 AAAGCTTTGGAGACATTAACAC

**ACGCGT**ACGCGGCCGCTCGAGCAGAACTCATCTCAGAAGAGGATCTGGCAGCAAATGATATCCTGGATT  
 ACAAGGATGACGACGATAAGGTTTAA

**Protein Sequence:**

>RC211667 representing NM\_001097635  
 Red=Cloning site Green=Tags(s)

MLRLLRRRLFSYPTKYYFVLVLSLITFSVLRIHQKPEFVSVRHLELAGENPSSDINCTKVLQGDVNEI  
 QKVKLEILTVKFKRPRWTPDDYINMTSDCSSFIKRRKYIVEPLSKEEAEFPIAYSIVVHHKIEMLDRLL  
 RAIYMPQNFYCIHVDTKSEDSYLAAVMGIASCFSNVVASRLESVVYASWSRVQADLNCMKDLYAMSANW  
 KYLINL CGMDFPIKTNLEIVRKLKLLMGENNLETERMP SHKEERWKKRYEVVNGKLTNTGTVMKLPPLET  
 PLFSGSAYFVVSREYVGYVLQNEKIQKLEWAQDTYSPDEYLWATIQRIPVPGSLPASHKYDLSDMQAV  
 ARFVKWQYFEGDVSKGAPYPPCDGVHVRVSVIFGAGDLNWMLRKHHLFANKFDVDVDFAIQCLDEHLRH  
 KALETLKH

**TR**TRPLEQKLISEEDLAANDILDYKDDDDKV

**Chromatograms:**

[https://cdn.origene.com/chromatograms/mk6106\\_c06.zip](https://cdn.origene.com/chromatograms/mk6106_c06.zip)

**Restriction Sites:**

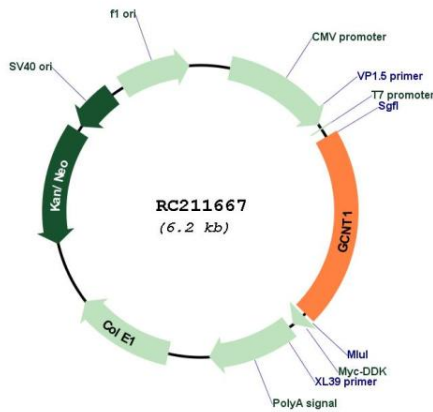
SgfI-MluI



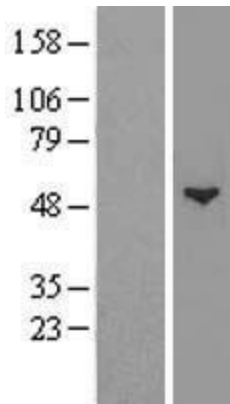
**Protein Families:** Transmembrane  
**Protein Pathways:** Metabolic pathways, O-Glycan biosynthesis  
**MW:** 49.8 kDa

**Gene Summary:** This gene is a member of the beta-1,6-N-acetylglucosaminyltransferase gene family. It is essential to the formation of Gal beta 1-3(GlcNAc beta 1-6)GalNAc structures and the core 2 O-glycan branch. The gene coding this enzyme was originally mapped to 9q21, but was later localized to 9q13. Multiple alternatively spliced variants, encoding the same protein, have been identified. [provided by RefSeq, Jul 2008]

**Product images:**



Circular map for RC211667



Western blot validation of overexpression lysate (Cat# [LY420411]) using anti-DDK antibody (Cat# [TA50011-100]). Left: Cell lysates from untransfected HEK293T cells; Right: Cell lysates from HEK293T cells transfected with [RC224441] using transfection reagent MegaTran 2.0 (Cat# [TT210002]).