

## Product datasheet for RC211663

### ST3GAL5 (NM\_001042437) Human Tagged ORF Clone

#### Product data:

Product Type:	Expression Plasmids
Product Name:	ST3GAL5 (NM_001042437) Human Tagged ORF Clone
Tag:	Myc-DDK
Symbol:	ST3GAL5
Synonyms:	SATI; SIAT9; SIATGM3S; SPDRS; ST3Gal V; ST3GalV
Mammalian Cell Selection:	Neomycin
Vector:	pCMV6-Entry (PS100001)
E. coli Selection:	Kanamycin (25 ug/mL)
ORF Nucleotide Sequence:	>RC211663 representing NM_001042437 Red=Cloning site Blue=ORF Green=Tags(s)

TTTTGTAATACGACTCACTATAGGGCGCCGGGAATTCGTCGACTGGATCCGGTACCGAGGAGATCTGCC  
GCC**CGGATCGCC**

ATGGCTTCTGTTCCAATGCCAAGTGAGTACACCTATGTGAACTGAGAAGTGATTGCTCGAGGCCTTCCC  
TGCAATGGTACACCCGAGCTCAAAGCAAGATGAGAAGGCCAGCTTGTTATTAAGACATCCTCAAATG  
TACATTGCTTGTGTTGGAGTGTGGATCCTTTATATCCTCAAGTTAAATTATACTACTGAAGAATGTGAC  
ATGAAAAAATGCATTATGTGGACCTGACCATGTAAGAGAGCTCAGAAATATGCTCAGCAAGTCTTG  
AGAAGGAATGTCGTCCTCAAGTTTGCCAAGACATCAATGGCGCTGTTATTTGAGCACAGGTATAGCGTGGA  
CTTACTCCCTTTTGTGCAGAAGGCCCCAAAGACAGTGAAGCTGAGTCCAAGTACGATCCCTTTTGGG  
TTCCGGAAGTTCTCCAGTAAAGTCCAGACCTCTTGGAACCTTGCCAGAGCACGACCTCCCTGAACACT  
TGAAAGCCAAGACCTGTGCGCGCTGTGTGGTATTGGAAGCGGAGGAATACTGCACGGATTAGAAGTGGG  
CCACACCTGAACCAGTTCGATGTTGTGATAAGGTTAAACAGTGCACCAGTTGAGGGATATTCAGAACAT  
GTTGAAATAAACTACTATAAGGATGACTTATCCAGAGGGCGCACCACTGTCTGACCTTGAATATTATT  
CCAATGACTTATTTGTTGCTGTTTTATTTAAGAGTGTGATTTCAACTGGCTTCAAGCAATGGTAAAAA  
GAAACCTTGCATTCTGGGTACGACTCTCTTTTGAAGCAGGTGCGAGAAAAAATCCCACTGCAGCCA  
AAACATTTCAAGATTTTGAATCCAGTTATCATCAAAGAGACTGCCTTTGACATCCTTCAGTACTCAGAGC  
CTCAGTCAAGTTCTGGGCGGAGATAAGAACGTCCCCACAATCGGTGTCATTGCCGTTGTCTTAGCCAC  
ACATCTGTGCGATGAAGTCAAGTTGGCGGGTTTTGGATATGACCTCAATCAACCCAGAACACCTTTGCAC  
TACTTCGACAGTCAATGCATGGCTGCTATGAACCTTCAGACCATGCATAATGTGACAACGGAAACCAAGT  
TCCTCTTAAAGCTGGTCAAAGAGGGAGTGGTGAAGATCTCAGTGGAGGCATTGATCGTGAATTT

**ACGCGT**ACGCGGCCGCTCGAGCAGAACTCATCTCAGAAGAGGATCTGGCAGCAATGATATCCTGGATT  
ACAAGGATGACGACGATAAGGTTTAA



[View online >](#)



**Reconstitution Method:**

1. Centrifuge at 5,000xg for 5min.
2. Carefully open the tube and add 100ul of sterile water to dissolve the DNA.
3. Close the tube and incubate for 10 minutes at room temperature.
4. Briefly vortex the tube and then do a quick spin (less than 5000xg) to concentrate the liquid at the bottom.
5. Store the suspended plasmid at -20°C. The DNA is stable for at least one year from date of shipping when stored at -20°C.

**RefSeq:** [NM\\_001042437.2](#)

**RefSeq Size:** 2262 bp

**RefSeq ORF:** 1188 bp

**Locus ID:** 8869

**UniProt ID:** [Q9UNP4](#)

**Cytogenetics:** 2p11.2

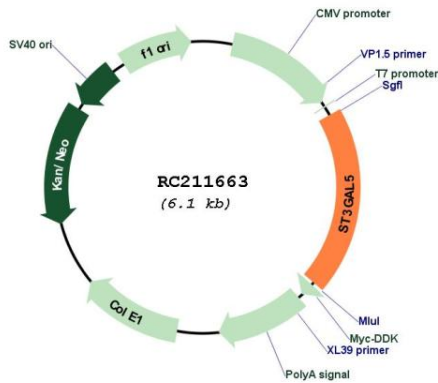
**Protein Families:** Transmembrane

**Protein Pathways:** Glycosphingolipid biosynthesis - ganglio series, Metabolic pathways

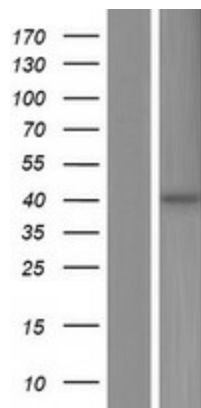
**MW:** 45.4 kDa

**Gene Summary:** Ganglioside GM3 is known to participate in the induction of cell differentiation, modulation of cell proliferation, maintenance of fibroblast morphology, signal transduction, and integrin-mediated cell adhesion. The protein encoded by this gene is a type II membrane protein which catalyzes the formation of GM3 using lactosylceramide as the substrate. The encoded protein is a member of glycosyltransferase family 29 and may be localized to the Golgi apparatus. Mutation in this gene has been associated with Amish infantile epilepsy syndrome. Transcript variants encoding different isoforms have been found for this gene. [provided by RefSeq, Jul 2008]

Product images:



Circular map for RC211663



Western blot validation of overexpression lysate (Cat# [LY420902]) using anti-DDK antibody (Cat# [TA50011-100]). Left: Cell lysates from untransfected HEK293T cells; Right: Cell lysates from HEK293T cells transfected with RC211663 using transfection reagent MegaTran 2.0 (Cat# [TT210002]).