

Product datasheet for **RC211652L1**

CELSR1 (NM_014246) Human Tagged Lenti ORF Clone

Product data:

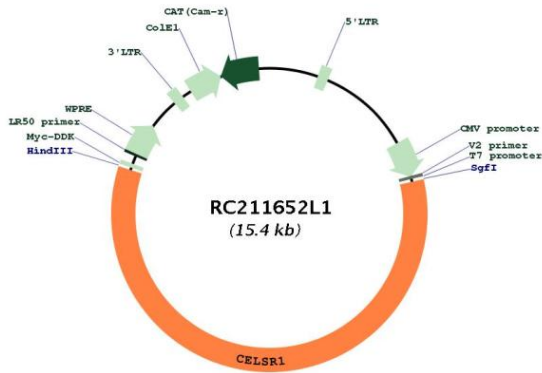
| | |
|----------------------------------|--|
| Product Type: | Expression Plasmids |
| Product Name: | CELSR1 (NM_014246) Human Tagged Lenti ORF Clone |
| Tag: | Myc-DDK |
| Symbol: | CELSR1 |
| Synonyms: | ADGRC1; CDHF9; FMI2; HFMI2; LMPHM9; ME2 |
| Mammalian Cell Selection: | None |
| Vector: | pLenti-C-Myc-DDK (PS100064) |
| E. coli Selection: | Chloramphenicol (34 ug/mL) |
| ORF Nucleotide Sequence: | The ORF insert of this clone is exactly the same as(RC211652). |
| Restriction Sites: | Sgfl-HindIII |
| Cloning Scheme: | □ |
| ACCN: | NM_014246 |
| ORF Size: | 9042 bp |
| OTI Disclaimer: | The molecular sequence of this clone aligns with the gene accession number as a point of reference only. However, individual transcript sequences of the same gene can differ through naturally occurring variations (e.g. polymorphisms), each with its own valid existence. This clone is substantially in agreement with the reference, but a complete review of all prevailing variants is recommended prior to use. More info |
| OTI Annotation: | This clone was engineered to express the complete ORF with an expression tag. Expression varies depending on the nature of the gene. |
| Components: | The ORF clone is ion-exchange column purified and shipped in a 2D barcoded Matrix tube containing 10ug of transfection-ready, dried plasmid DNA (reconstitute with 100 ul of water). |



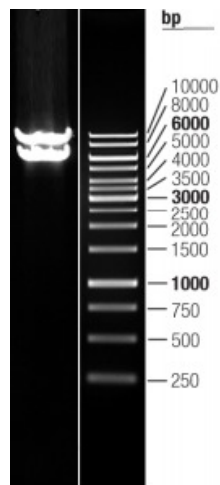
[View online »](#)

| | |
|-------------------------------|--|
| Reconstitution Method: | <ol style="list-style-type: none">1. Centrifuge at 5,000xg for 5min.2. Carefully open the tube and add 100ul of sterile water to dissolve the DNA.3. Close the tube and incubate for 10 minutes at room temperature.4. Briefly vortex the tube and then do a quick spin (less than 5000xg) to concentrate the liquid at the bottom.5. Store the suspended plasmid at -20°C. The DNA is stable for at least one year from date of shipping when stored at -20°C. |
| RefSeq: | NM_014246.4 |
| RefSeq Size: | 11389 bp |
| RefSeq ORF: | 9045 bp |
| Locus ID: | 9620 |
| UniProt ID: | Q9NYQ6 |
| Cytogenetics: | 22q13.31 |
| Protein Families: | Druggable Genome, Transmembrane |
| MW: | 329.5 kDa |
| Gene Summary: | <p>The protein encoded by this gene is a member of the flamingo subfamily, part of the cadherin superfamily. The flamingo subfamily consists of nonclassic-type cadherins; a subpopulation that does not interact with catenins. The flamingo cadherins are located at the plasma membrane and have nine cadherin domains, seven epidermal growth factor-like repeats and two laminin A G-type repeats in their ectodomain. They also have seven transmembrane domains, a characteristic unique to this subfamily. It is postulated that these proteins are receptors involved in contact-mediated communication, with cadherin domains acting as homophilic binding regions and the EGF-like domains involved in cell adhesion and receptor-ligand interactions. This particular member is a developmentally regulated, neural-specific gene which plays an unspecified role in early embryogenesis. [provided by RefSeq, Jul 2008]</p> |

Product images:



Circular map for RC211652L1



Double digestion of RC211652L1 using SgfI and PmeI