

Product datasheet for **RC211651**

Histidase (HAL) (NM_002108) Human Tagged ORF Clone

Product data:

Product Type:	Expression Plasmids
Product Name:	Histidase (HAL) (NM_002108) Human Tagged ORF Clone
Tag:	Myc-DDK
Symbol:	Histidase
Synonyms:	HIS; HSTD
Mammalian Cell Selection:	Neomycin
Vector:	pCMV6-Entry (PS100001)
E. coli Selection:	Kanamycin (25 ug/mL)



[View online »](#)

ORF Nucleotide
Sequence:

>RC211651 ORF sequence

Red=Cloning site Blue=ORF Green=Tags(s)

TTTTGTAATACGACTCACTATAGGGCGGCCGGGAATTCGTCGACTGGATCCGGTACCGAGGAGATCTGCC
GCCGCGATCGCCATGCCAGATACACGGTGCACGTACGTGGGAATGGCTGGCAGTGCCTGCCAGGACGCGCAGCTCACTG
TGGGCTGGCTGGGCCGGAGGCCGTGAGGCGCTATATCAAGAATAAGCCCGACAATGGTGGCTTCACCTC
CGTGGATGACGCGCACTTCCCTTGTGCGCCGGTGAAGGGCCTGGGCTGCTGGACAACGAGGACCGGCTC
GAGGTGGCCCTAGAGAACAACGAGTTCTGTGGAAGTGGTTATAGAGGGTGATGCCATGTCTCCTGACTTCA
TTCCATCTCAACCAGAAGGAGTTTATCTATACAGCAAGTACCGGGAGCCTGAAAAGTACATCGAGTTAGA
TGGAGACCGTCTGACCACGGAGGATCTGGTCAACTTGGGAAAGGGACGCTACAAAATAAAGCTCACCCCA
ACAGCTGAGAAGAGGGTGCAGAAATCCAGGGAGGTCATAGATAGCATCATAAAGAGAAAACAGTTGTTT
ACGGTATTACTACAGTTTTGGGAAATTTGCCAGAAGTGAATTCCTATCAATAAGCTACAGGAGCTTCA
GGTCAACTTAGTACGCTCACATTCTCAGGTGTTGGGAAACCCTAAGTCCTGAGAGGTGTCGGATGCTC
TTGGCTTTAAGGATCAATGTCTTAGCCAAAGGATACAGTGGCATTTCCTGGAGACCTCAAACAAGTCA
TAGAAATGTTAATGCCTCCTGCCTGCCCTATGTCCCAGAGAAAGGAACCGTTGGTGCCAGTGGAGACCT
TGCCCCACTCTCTCATCTTGCTCTTGGGCTAGTTGGAGAAGGGAAGATGTGGTCTCCGAAGAGTGGCTGG
GCTGATGCTAAATACGTGCTAGAAGCCCATGGATTGAAACCAGTTATTTAAAACCAAAAGAGGGCCTGG
CACTCATCAATGGGACGCAGATGATCACATCCCTGGGCTGTGAAGCTGTAGAGCGAGCCAGTGTATTGC
ACGGCAGGCTGACATTGTGGCAGCCCTGACCCTGAGGTGCTGAAGGGCACCACCAAGCCTTTGACACT
GACATTCATGCTCTTCGACCTCACCGTGGGCAAATTAAGTTGCTTTTCGGTTTCGGTCACTCTTGACT
CAGATCACCCCATCAGAAATAGCAGAGAGTACAGGTTCTGTGATCGCGTCCAGGATGCATACACCTT
GGCTGCTGTCCACAGGTCCATGGTGTGGTGAATGATACAATAGCATTGTGAAGAACATCATTACCACA
GAACTGAACAGCGCAACAGATAATCCTATGGTCTTTGCCAATAGGGGAGAGACAATTTCTGGAGGAACT
TCCATGGTGAATACCCAGCCAAAGCCCTAGACTACTTGGCCATTGGCATCCATGAACTTGTGCAATCAG
TGAGAGAAGAATCGAGCGGCTCTGCAATCCCTCCCTCAGTGAAGTGCCTGCCTTCTGGTGGCTGAAGGT
GGTCTGAACTCTGGTTCATGATAGCTCACTGCACGGCAGCAGCCCTTGTCTGAGAACAAGGCTCTGT
GCCATCCCTCGTCTGTTGACTCCCTCTCCACCAGCGCAGCCACGGAGGACCACGCTCCATGGGAGGATG
GGCAGCAAGGAAAGCCCTCAGGGTCATCGAGCATGTGGAGCAAGTGTGGCCATCGAGCTCCTTGCAGCC
TGCCAGGGCATAGAGTTTCTACGTCCTCCGAAAACAACCACTCCGCTGGAGAAGGTCTATGACCTGGTGC
GCTCTGTTGTAAGGCCCTGGATAAAAGATCGCTTCATGGCCCCGGACATCGAGGCCAGCCACAGGCTGCT
CCTGGAGCAGAAGGTTTGGGAAGTAGCTGCTCCATACATTGAAAAATACAGAATGGAGCATATCCAGAA
TCAAGACCTCTTTCTCCAACAGCCTTTTACTGCAATTTCTGCACAAGAAATCCACCAAAATCCCGGAGT
CTGAGGACCTTACGCGTACGCGGCCGCTCGAGCAGAACTCATCTCAGAAGAGGATCTGGCAGCAATGATATCCTGGATT
ACAAGGATGACGACGATAAGGTTTAA

Protein Sequence: >RC211651 protein sequence
 Red=Cloning site Green=Tags(s)

```

MPRYTVHVRGEWLAVPCQDAQLTVGWLGREAVRRYIKNKPNDGGFTSVDDAHFLVRRCKGLGLLDNEDRL
EVALENNEFVEVIEGDAMSPDFIPSQPEGVYLYSKYREPEKYIELDGDRLTTEDLVNLGKGRYKIKLTP
TAEKRVQKSREVIDSIIKEKTVVYGITTFGKGFARTVIPINKLQELQVNLVRSHSSGVGKPLSPERCRML
LALRINVLAKGYSGISLETLLKQVIEMFNASCLPYVPEKGTVGASGDLAPLSHLALGLVGEKMWSPKSGW
ADAKYVLEAHGLKPVILKPEGLALINGTQMITSLGCEAVERASAIARQADIVAALTLEVLKGTTKAFDT
DIHALRPHRGQIEVAFRFRSLDSDHHPSEIAESHRCDFRQDAYTLRCCPQVHGVDNTIAFVKNIITT
ELNSATDNPMVFANGETISGGNFHGEYPAKALDYLAIGIHELAAISERRIERLCNPSELPAFLVAEG
GLNSGFMIHCTAAALVSENKALCHPSSVDSLSTSAATEDHVSMGGWAARKALRVIEHVEQVLAIELLAA
CQGI EFLRPLKTTTTPLEKVVYDLVRSVVRPWIKDRFMAPDIEAAHRLLEQKVWEVAAPYIEKYRMEHIPE
SRPLSPTAFSLQFLHKKSTKIPESDL
  
```

TRTRPLEQKLI SEEDLAANDILDYKDDDDKV

Chromatograms: https://cdn.origene.com/chromatograms/mk6554_h08.zip

Restriction Sites: SgfI-MluI

Cloning Scheme:

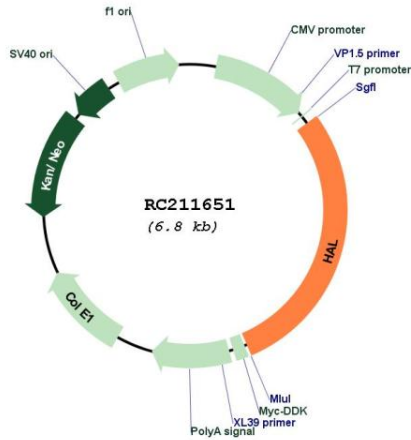


ACCN: NM_002108

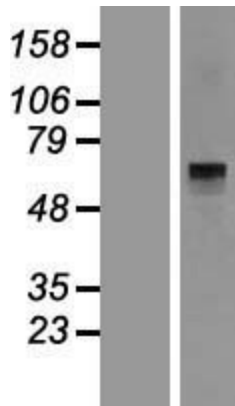
ORF Size: 1971 bp

OTI Disclaimer:	<p>Due to the inherent nature of this plasmid, standard methods to replicate additional amounts of DNA in E. coli are highly likely to result in mutations and/or rearrangements. Therefore, OriGene does not guarantee the capability to replicate this plasmid DNA. Additional amounts of DNA can be purchased from OriGene with batch-specific, full-sequence verification at a reduced cost. Please contact our customer care team at custsupport@origene.com or by calling 301.340.3188 option 3 for pricing and delivery.</p> <p>The molecular sequence of this clone aligns with the gene accession number as a point of reference only. However, individual transcript sequences of the same gene can differ through naturally occurring variations (e.g. polymorphisms), each with its own valid existence. This clone is substantially in agreement with the reference, but a complete review of all prevailing variants is recommended prior to use. More info</p>
OTI Annotation:	<p>This clone was engineered to express the complete ORF with an expression tag. Expression varies depending on the nature of the gene.</p>
Components:	<p>The ORF clone is ion-exchange column purified and shipped in a 2D barcoded Matrix tube containing 10ug of transfection-ready, dried plasmid DNA (reconstitute with 100 ul of water).</p>
Reconstitution Method:	<ol style="list-style-type: none">1. Centrifuge at 5,000xg for 5min.2. Carefully open the tube and add 100ul of sterile water to dissolve the DNA.3. Close the tube and incubate for 10 minutes at room temperature.4. Briefly vortex the tube and then do a quick spin (less than 5000xg) to concentrate the liquid at the bottom.5. Store the suspended plasmid at -20°C. The DNA is stable for at least one year from date of shipping when stored at -20°C.
RefSeq:	NM_002108.4
RefSeq Size:	3927 bp
RefSeq ORF:	1974 bp
Locus ID:	3034
UniProt ID:	P42357
Cytogenetics:	12q23.1
Protein Families:	Druggable Genome
Protein Pathways:	Histidine metabolism, Metabolic pathways, Nitrogen metabolism
MW:	72.7 kDa
Gene Summary:	<p>Histidine ammonia-lyase is a cytosolic enzyme catalyzing the first reaction in histidine catabolism, the nonoxidative deamination of L-histidine to trans-urocanic acid. Histidine ammonia-lyase defects cause histidinemia which is characterized by increased histidine and histamine and decreased urocanic acid in body fluids. Several transcript variants encoding different isoforms have been found for this gene. [provided by RefSeq, Apr 2012]</p>

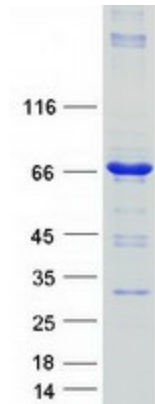
Product images:



Circular map for RC211651



Western blot validation of overexpression lysate (Cat# [LY419526]) using anti-DDK antibody (Cat# [TA50011-100]). Left: Cell lysates from untransfected HEK293T cells; Right: Cell lysates from HEK293T cells transfected with RC211651 using transfection reagent MegaTran 2.0 (Cat# [TT210002]).



Coomassie blue staining of purified HAL protein (Cat# [TP311651]). The protein was produced from HEK293T cells transfected with HAL cDNA clone (Cat# RC211651) using MegaTran 2.0 (Cat# [TT210002]).