

## Product datasheet for RC211639

### LY75 (NM\_002349) Human Tagged ORF Clone

#### Product data:

Product Type:	Expression Plasmids
Product Name:	LY75 (NM_002349) Human Tagged ORF Clone
Tag:	Myc-DDK
Symbol:	LY75
Synonyms:	CD205; CLEC13B; DEC-205; GP200-MR6; LY-75
Mammalian Cell Selection:	Neomycin
Vector:	pCMV6-Entry (PS100001)
E. coli Selection:	Kanamycin (25 ug/mL)
ORF Nucleotide Sequence:	>RC211639 representing NM_002349. Blue=ORF Red=Cloning site Green=Tag(s)

```
GCTCGTTTAGTGAACCGTCAGAATTTGTAAACGACTACTATAGGGCGCCGGGAATTCGTCGACTG
GATCCGGTACCGAGGAGATCTGCCGCCGCGATCGCC
ATGAGGACAGGCTGGGCGACCCCTCGCCGCCCGGGGGCTCCTCATGCTGCTCTCCGGTTCCTCGAT
CTCGCGGAGCCCTCTGGCCGCGCAGCTAATGACCCCTTACCATCGTCCATGAAATACGGGCAAGTGC
ATCAAGCCAGTGTATGGCTGGATAGTAGCAGCAGCTGTGATGAACTGAGGACAAGTTATGGAAGTGG
GTGTCCCAGCATCGGCTCTTTCATTTGCACTCCAAAAGTGCCTTGGCCTCGATATTACCAATCGGTA
AATGAGCTGAGAATGTTAGCTGTGACTCCAGTCCATGCTGTGGTGGAAATGTGAGCACCCTCTCTG
TACGGAGCTGCCCGGTACCGGCTGGCTCTGAAGGATGGACATGGCACAGCAATCTCAAATGCATCTGAT
GTCTGGAAGAAAGGAGGCTCAGAGGAAAGCCTTTGTGACCAGCCTTATCATGAGATCTATACCAGAGAT
GGGAACCTTATGGGAGACCTTGTGAATTTCCATTCTTAATTGATGGGACCTGGCATCATGATTGCATT
CTTGATGAAGATCATAGTGGGCCATGGTGTGCCACCACCTTAAATATGAATATGACCGAAAGTGGGGC
ATCTGCTTAAAGCCTGAAAACGGTTGTGAAGATAATTGGGAAAAGAACGAGCAGTTTGGAAAGTGTAC
CAATTTAATACTCAGACGGCTCTTCTTGGAAAGAAGCTTATGTTTCATGTCAGAATCAAGGAGCTGAT
TACTGAGCATCAACAGTGTCTGCTGAATTAACCTTAAAGAAAAAGAAGGCATTGCTAAGATTTTC
TGGATTGGTTTAAATCAGCTATACTCTGCTAGAGGCTGGGAATGGTCAGACCACAACCATTAACTTT
CTCAACTGGGATCCAGACAGGCCAGTGCACCTACTATAGTGGTCCAGCTGTGCAAGAATGGATGCT
GAGTCTGGTCTGTGGCAGAGCTTTTCTGTGAAGCTCAACTGCCCTATGTCTGCAGGAAACCATTAAAT
AATACAGTGGAGTTAACAGATGTCTGGACATACTCAGATACCCGCTGTGATGCAGGCTGGCTGCCAAAT
AATGGATTTTGTCTATCTGCTGGTAAATGAAAGTAAATCCTGGGATAAGGCACATGCGAAATGCAAAGCC
TTCAGTAGTGACCTAATCAGCATTCTTCTAGCAGATGTGGAGGTGGTTGTCACAAAACCTCATAAT
GAGGATATCAAAGAAGAAGTGTGGATAGGCCTTAAAGAACATAAACATAACCACTTTATTTTCAGTGGTCA
GATGGTACTGAAGTTACTCTAACATATTGGGATGAGAATGAGCCAAATGTTCCCTACAATAAGACGCC
AACTGTGTTTCTACTTAGGAGAGCTAGGTGAGTGGAAAGTCCAATCATGTGAGGAGAACTAAAATAT
GTATGCAAGAGAAAGGGAGAAAAACTGAATGACGCAAGTTCTGATAAGATGTGCTCCTCAGATGAGGGC
```



[View online »](#)

TGGAAGAGACATGGAGAAACCTGTTACAAGATTTATGAGGATGAGGTCCTTTTGGAAACAACTGCAAT  
 CTGACTATCACTAGCAGATTTGAGCAAGAATACCTAAATGATTTGATGAAAAAGTATGATAAATCTCA  
 AGAAAATACTTCTGGACTGGCCTGAGAGATGTAGATTCTTGTGGAGAGTAACTGGGCAACTGTTGGT  
 GGAAGAAGGCGGGCTGTAACTTTTCCAACCTGGAAATTTCTTGAGCCAGCTTCCCCGGGCGGCTGCGTG  
 GCTATGTCTACTGGAAAGTCTGTTGGAAAGTGGGAGGTGAAGGACTGCAGAAGCTTCAAAGCACTTCA  
 ATTTGCAAGAAAATGAGTGGACCCCTTGGGCCTGAAGAAGCATCCCCTAAGCCTGATGACCCCTGTCT  
 GAAGGCTGGCAGAGTTTCCCGCAAGTCTTCTGTTTAAAGTATTCCATGCAGAAAAGAAATGTAAGA  
 AAGAGGAACTGGGAAGAAGCTGAACGATTGCAAGCCCTTGGAGCACACCTTTCTAGCTTCAGCCAT  
 GTGGATGAAATAAAGGAATTTCTCACTTTTTAACGGACCAAGTTCAGTGGCCAGCATTGGCTGTGGATT  
 GGTGTTGAATAAAGGAGCCAGATTTACAAGGATCCTGGCAATGGAGTATCGTACACCAGTGTCTACT  
 ATTATCATGCCAAATGAGTTTCAGCAGGATTATGACATCAGAGACTGTGCTGCTCAAGGTATTTTCA  
 AGGCCATGGCAAGAGGCTGGCATTCTATGATGATAGAGAATTTATTTATTTGAGGCTTTTGTCTGT  
 GATACAAAATGAAATGGGTGTGCCAAATTCAAAAGGCCGACTCCAAAACACCAGACTGGTACAAT  
 CCAGACCGTGTGGAATTCATGGACCTCCACTTAAATGAAGGAAGTGAATATTGGTTTGTGCTGAT  
 CTTACCTAAACTATGAAGAAGCCGCTCTGTACTGTGCCAGCAATCACAGCTTTCTTGCAGCTATAACA  
 TCTTTTGTGGGACTAAAAGCCATCAAAAACAAAATAGCAAATATATCTGGTGATGGACAGAAGTGGTGG  
 ATAAGAATTAGCGAGTGGCCAATAGATGATCATTTCATACTACGATATCCATGGCACCCTTTCTCT  
 GTGACATTTGGAGAGGAATGCTTGTACATGTCTGCCAAGACTTGGCTTATCGACTTAGGTAACCAACA  
 GACTGTAGTACCAAGTTGCCCTTCATCTGTGAAAAATAAATGTTTCTCGTTAGAGAAATACAGCCCA  
 GATTCTGCAGCTAAAGTGAATGTTCTGAGCAATGGATTCTTTTTCAGAATAAGTGTCTTAAAGATC  
 AAACCCGTGTCTCACATTTTCAAGCAAGCGATACCTGTCACTCCTATGGTGGCACCCTTCTTCA  
 GTTTGGCCGACTGGACTGCCTATGAAAAGATAAACAATGGACAGATAACAGAGAGCTGACGTACAGTAAC  
 TTTCCACCATTATTGGTTAGTGGGAGGCTGAGAATACCAGAAAATTTTTTTGAGGAAGACTTCGCTAC  
 CACTGTGCCCTAATACTCAACCTCCAAAATCACCGTTTACTGGGACGTGGAATTTTACATCCTGCAGT  
 GAACGCCACTTTGTGTCTCTGTGAGAAATATTCAGAAGTTAAAAGCAGACAGACGTTGCAGAATGCT  
 TCAGAACTGTAAGTATCTAAATAATCTGTACAAAATAATCCCAAAGACTCTGACTTGGCACAGTGTCT  
 AAAAGGGAGTGTCTGAAAAGTAACATGCAGCTGGTGGACATCACGGACCCTTACCAGCAGGCATTCTC  
 AGTGTGCAGGCGCTCCTTCAACTCTTCTTATGGATCGGACTCTTCAAGTATGATGAACTCAAC  
 TTTGGTTGGTCAAGTGGAAACGCTTCTTATTTAGTCGCTGGGCTGAAACTAATGGGCAACTCGAAGAC  
 TGTGTAGTATTAGACTGATGGATTCTGGAAAACAGTTGATTGCAATGACAATCAACCAGTGTCTATT  
 TGTACTATTAGGAAATGAGACTGAAAAGAGGTCAAACCAGTTGACAGTGTTAAATGTCCATCTCCT  
 GTTCTAAATACTCCGTGGATACCATTTTCAAGACTGTTGCTACAATTTTATAATAACAAAGAAATAGGCAT  
 ATGGCAACAACACAGGATGAAGTTCATACTAAATGCCAGAACTGAATCCAAAATCACATATTCTGAGT  
 ATTCGAGATGAAAAGGAGAATAACTTTGTTCTTGGCAACTGCTGTACTTCAATTATATGGCTTCATGG  
 GTCATGTTAGGAATAACTTATAGAAATAATCTCTTATGTGGTTTGATAAGACCCCACTGTCATATA  
 CATTGGAGAGCAGGAAGACCAACTATAAAAAATGAGAAGTTTTTGGCTGGTTAAGTACTGACGGCTTC  
 TGGGATATTCAAACCTTTAAAGTTATTGAAGAAGCAGTTTATTTTACCAGCACAGCATTCTTGTCTGT  
 AAAATTGAAATGGTTGACTACAAAAGAAGAACATAATACTACACTGCCACAGTTTATGCCATATGAAGAT  
 GGTATTTACAGTGTTATTCAAAAAAGGTAACATGGTATGAAGCATTAAACATGTGTTCTCAAAGTGG  
 GGTCACTTGGCAAGCGTTCAACAACAAAATGGCCAGCTCTTTCTGGAAGATATTGTAACCGTGTGGA  
 TTTCCACTATGGGTTGGGCTCTCAAGTCATGATGGAAGTGAATCAAGTTTTGAATGGTCTGATGGTGT  
 ACATTTGACTATATCCCATGGAAAGGCCAAACATCTCCTGGAATTTGTGTTCTCTGGATCCAAAAGGA  
 ACTTGGAAACATGAAAAATGCAACTCTGTTAAGGATGGTGTCTATTTGTTATAAACCTACAAAATCTAAA  
 AAGCTGTCCCGTCTTACATATTCATCAAGATGTCCAGCAGCAAAAAGAGAATGGGTACGGTGGATCCAG  
 TACAAGGGTCACTGTTACAAGTCTGATCAGGCATTGCACAGTTTTTTCAGAGGCCAAAAAATGTGTTCA  
 AAACATGATCACTCTGCAACTATCGTTTCCATAAAAGATGAAGATGAGAATAAATTTGTGAGCAGACTG  
 ATGAGGGAAAATAATAACATTACCATGAGAGTTTGGCTTGGATTATCTCAACATTCTGTTGACCAGTCT  
 TGGAGTTGGTTAGATGGATCAGAAGTGACATTTGTCAAATGGGAAAATAAAAGTAAAGTGGTGGTGGGA  
 AGATGTAGCATGTTGATAGCTTCAAATGAAACTTGGAAAAAGTTGAATGTGAACATGGTTTTGGAAGA  
 GTTGTCTGCAAGTGCCTCTGGGCCCTGATTACACAGCAATAGCTATCATAGTTGCCACACTAAGTATC  
 TTAGTTCTCATGGGCGGACTGATTTGGTTCTCTTCCAAAGGCACCGTTTGCACCTGGCGGGTTCTCA

TCA GTTCGATATGCACAAGGAGTGAATGAAGATGAGATTATGCTTCCTTCTTTCCATGAC  
 ACGCGTACGCGGCCGCTCGAGCAGAACTCATCTCAGAAGAGGATCTGGCAGCAAATGATATCCTGGAT  
 TACAAGGATGACGACGATAAGGTTAAACGCGCCGGC

**Protein Sequence:**

>Peptide sequence encoded by RC211639  
 Blue=ORF Red=Cloning site Green=Tag(s)

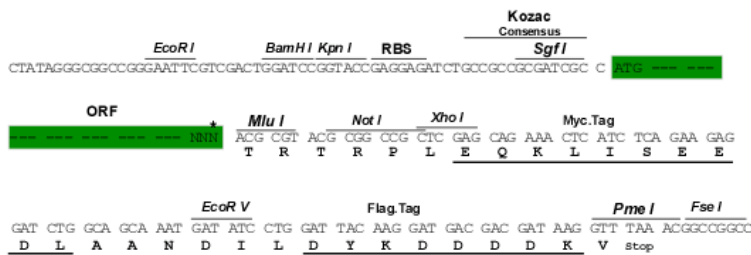
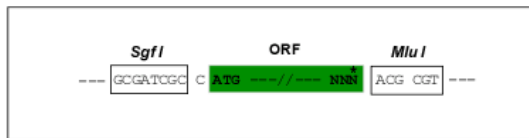
MRTGWATPRRPAGLLMLLFRFFDLAEPSSGRAANDPFTIVHGNTGKCIKPVYGVIVADDCDEDEDKLVK  
 VSQHRFLHLSQKCLGLDITKSVNELRMFSCDSSAMLWWKCEHHSLYGAARYRLALDKGHGTAISNASD  
 VWKKGSGSEELCDQPYHEIYTRDGNYSYGRPCFPFLIDGTWHDHDCILDEDHSGPWCATLLNVEYDRKWG  
 ICLKPENGCEDNWEKNEQFGSCYQFNTQTALSWKEAYVSCQNQGADLLSINSAEELTYLKEKEGIAKIF  
 WIGLNQLYSARGWEVSDHKPLNFLNWDPRPSAPTIGGSSCARMDAESGLWQSFCEAQLPYVCRKPLN  
 NTVELTDVWYTSYDRCDAGWLPNNGFCYLLVNESNSWDKAHAKCAFSSDLISIHSLADVEVVVTKLHN  
 EDIKEEVWIGLKNINIPTLFWQSDGTEVLTLYWDENEPNVPYKTPNCVSYLGELGQWKVQSCEEKLKY  
 VCKRKGKLNDASSDKMCPPEDEGWKRHGETCYKIYEDEVFPFGTNCNLITSRFEQYLNLDLKKYDKSL  
 RYFWTGLRDVDSCEYEWATVGGRRRAVTFSNWNFLPASPGGCVAMSTGKSVGKWEVKDCRSFKALS  
 ICKKMSGPLGPEEASPKPDDPCPEGWQSFASLSCYKVFHAERIVRKRNWEEAERFCQALGAHLSSFSH  
 VDEIKEFLHFLTDQFSGQHWLWIGLNKRSPDLQGSWQSDRTPVSTIIMPNEFQQDYDIRCAAVKVFH  
 RPWRRGWHFYDDREFIYLRPFACDTKLEWVCQIPKGRTPKTPDWYNPDRAGIHGPLIIEGSEYFVAD  
 LHLNVEEAVLYCASNHSFLATITSFVGLKAIKNIANISGDGQKWWIRISEWPIDDHFTYSRYPWHRFP  
 VTFGEECLYMSAKTWLIDLKPTDCSTKLPFICEKYNVSSLEKYPDSAAKVQCSEQWIPFQNKCFKI  
 KPVS LTF SQASDTCHSYGGTLPVLSQIEQDFITSLLPDMEATLWIGLRWTAYEKINKWTDNRELTYSN  
 FHPLLVSQRRLRIPENFFEEESRYHCALILNLQKSPFTGTWNFTSCSERHFVSLCQKYSEVSRQTLQNA  
 SETVKYLNLYKIIPKTLTWSAKRECLKSNMQLV SITDPYQQAFLSVQALLHNSSLWIGLFSQDDELN  
 FGWSDGKRLHFSRWAETNGQLEDVVLDTDGFWKTVDCNDNQPGAICYSGNETEKEVKPVDSVKCPSP  
 VLNTPWIPFQNCYNIITKNRHMATTQDEVHTKCQKLNPKSHILSIRDEKENNFVLEQLLYFNMASW  
 VMLGITYRNNSLMWFDKTPLSYTHWRAGRPTIKNEKFLAGLSTDFWDIQTFKVIIIEAVYFHQHSILAC  
 KIEMVDYKEEHNTLPQFMPYEDGIYSVIQKKVTWYEAALNMCSQSGGHLASVHNQNGQLFLEDIVKRDG  
 FPLWVGLSSHDGSESSFESWSDGSTFDYIPWKGQTPSGNCVLLDPKGTWKHEKCNVSKDGAICYKPTSK  
 KLSRLTYSRCPAAKENGSRWIQYKGHCYKSDQALHSFSEAKKLSKHDHSATIVSIKDEDENKVFVSR  
 MRENNNITMRVWLGLSQHSVDQSWSLDGSEVTFVKWENKSKSGVGRCSMLIASNETWKKVECEHGFGR  
 YVCKVPLGPDYTAIAII VATLSILVLMGGLIWFLFQRHRLHLAGFSSVRYAQGVNEDEIMLP SFHD  
 TRTRPLEQKLISEEDLAANDILDYKDDDDKV

**Restriction Sites:**

**Cloning Scheme:**

**Sgfl-MluI**

Cloning sites used for ORF Shuttling:

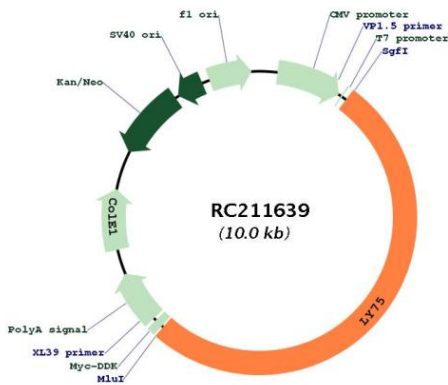


\* The last codon before the Stop codon of the ORF

<b>ACCN:</b>	NM_002349
<b>ORF Size:</b>	5166 bp
<b>OTI Disclaimer:</b>	<p>Due to the inherent nature of this plasmid, standard methods to replicate additional amounts of DNA in E. coli are highly likely to result in mutations and/or rearrangements. Therefore, OriGene does not guarantee the capability to replicate this plasmid DNA. Additional amounts of DNA can be purchased from OriGene with batch-specific, full-sequence verification at a reduced cost. Please contact our customer care team at <a href="mailto:custsupport@origene.com">custsupport@origene.com</a> or by calling 301.340.3188 option 3 for pricing and delivery.</p> <p>The molecular sequence of this clone aligns with the gene accession number as a point of reference only. However, individual transcript sequences of the same gene can differ through naturally occurring variations (e.g. polymorphisms), each with its own valid existence. This clone is substantially in agreement with the reference, but a complete review of all prevailing variants is recommended prior to use. <a href="#">More info</a></p>
<b>OTI Annotation:</b>	This clone was engineered to express the complete ORF with an expression tag. Expression varies depending on the nature of the gene.
<b>Components:</b>	The ORF clone is ion-exchange column purified and shipped in a 2D barcoded Matrix tube containing 10ug of transfection-ready, dried plasmid DNA (reconstitute with 100 ul of water).
<b>Reconstitution Method:</b>	<ol style="list-style-type: none"><li>1. Centrifuge at 5,000xg for 5min.</li><li>2. Carefully open the tube and add 100ul of sterile water to dissolve the DNA.</li><li>3. Close the tube and incubate for 10 minutes at room temperature.</li><li>4. Briefly vortex the tube and then do a quick spin (less than 5000xg) to concentrate the liquid at the bottom.</li><li>5. Store the suspended plasmid at -20°C. The DNA is stable for at least one year from date of shipping when stored at -20°C.</li></ol>
<b>RefSeq Size:</b>	6928 bp

RefSeq ORF:	5169 bp
Locus ID:	4065
UniProt ID:	<u>O60449</u>
Cytogenetics:	2q24.2
Domains:	FN2, RICIN, CLECT
Protein Families:	Transmembrane
MW:	198.2 kDa
Gene Summary:	Acts as an endocytic receptor to direct captured antigens from the extracellular space to a specialized antigen-processing compartment (By similarity). Causes reduced proliferation of B-lymphocytes.[UniProtKB/Swiss-Prot Function]

**Product images:**



Circular map for RC211639