

Product datasheet for RC211636

AADACL3 (NM_001103169) Human Tagged ORF Clone

Product data:

Product Type:	Expression Plasmids
Product Name:	AADACL3 (NM_001103169) Human Tagged ORF Clone
Tag:	Myc-DDK
Symbol:	AADACL3
Synonyms:	RP11-474O21.3
Mammalian Cell Selection:	Neomycin
Vector:	pCMV6-Entry (PS100001)
E. coli Selection:	Kanamycin (25 ug/mL)
ORF Nucleotide Sequence:	>RC211636 representing NM_001103169 Red=Cloning site Blue=ORF Green=Tags(s)

TTTTGTAATACGACTCACTATAGGGCGCCGGGAATTCGTCGACTGGATCCGGTACCGAGGAGATCTGCC
GCC**CGATCGCC**

ATGGAACCCACCATGGCATATGCTCTCGTTTGTGCAAGGAGAGTGACTCCGTGGTTCTGGCAGTTGGTT
ACCGCAAGTTACCTAAGCATAAGTTTCCAGTGCCAGTAAGAGACTGCTTGGTGGCCACCATCCACTTCT
GAAGTCCCTGGATGCATATGGAGTGGATCCAGCCCGGTTGTGGTCTGCGGTGACAGTTTCGGAGGGCA
ATAGCCGAGTGGTTTGTCAACAACTTGTGGACAGGCCAGATCTGCCCGGATCCGGGCTCAGATCTGA
TCTATGCCATTCTCAAGCCCTGGATTTACAAACCCCTTCGTTTCAACAGAGGAAAAACATCCCCTGCT
CACCTGGAGTTTTCATCTGCTACTGTTTTTTCAAACCTGGATTTTCAGCTCCTCCTGGCAAGAGGTCATC
ATGAAAGGTGCCATTTGCCTGCTGAAGTCTGGGAAAAGTACAGAAAGTGGTTGGGCCAGAAAACATCC
CTGAGAGGTTTAAAGGAGAGGGGTTACCAACTGAAGCCCATGAGCCCATGAATGAAGCTGCTTACTTGG
AGTAAGTGTGCTGCTGGATGTGATGTGCTCGCCCTGATTGCAGAAGATGACATAGTGTCTCAGTCCCG
GAAACCTGCATCGTGAGCTGTGAGTATGATGCTCTCCGGGACAATTCAGTGTGTACAAGAAAAGGCTGG
AAGACCTGGGAGTGGCCGTGACCTGGCACCATATGGAGGATGGTTTCCATGGAGTGTCTCAGGACCATTGA
CATGAGCTTCTTGCACTTCCCTGCTCCATGAGAATTCGAGTGCATTAGTTCAATTTGTAAGGGACTG

ACGCGTACGCGGCCGCTCGAGCAGAAACTCATCTCAGAAGAGGATCTGGCAGCAAATGATATCCTGGATT
ACAAGGATGACGACGATAAGGTTTAA



[View online »](#)

Protein Sequence: >RC211636 representing NM_001103169
 Red=Cloning site Green=Tags(s)

METHHGICSRLOCKESDSVVLAVGYRKLPHKHPVVRDCLVATIHFLKSLDAYGVDPARVVVCGDSFGGA
 IAAVVCQQLVDRPDLPRIRAQILIYAILQALDLQTPSFQQRKNIPLLTWSFICYCFFQNLDFSSSWQEV
 MKGAHLPAEVWEKYRKLWLPENIPERFKERGYQLKPHEPMNEAAYLEVSVVLDVMCSPLIAEDDIVS
 QLPETCIVSCEYDALRDNSLLYKKRLEDLGVPTWHHMEDGFHGLVRTIDMSFLHFPCSMRILSALVQFVKGL

TRTRPLEQKLISEEDLAANDILDYKDDDDKV

Chromatograms: https://cdn.origene.com/chromatograms/ja1264_c09.zip

Restriction Sites: SgfI-MluI

Cloning Scheme:



ACCN: NM_001103169

ORF Size: 840 bp

OTI Disclaimer: The molecular sequence of this clone aligns with the gene accession number as a point of reference only. However, individual transcript sequences of the same gene can differ through naturally occurring variations (e.g. polymorphisms), each with its own valid existence. This clone is substantially in agreement with the reference, but a complete review of all prevailing variants is recommended prior to use. [More info](#)

OTI Annotation: This clone was engineered to express the complete ORF with an expression tag. Expression varies depending on the nature of the gene.

Components: The ORF clone is ion-exchange column purified and shipped in a 2D barcoded Matrix tube containing 10ug of transfection-ready, dried plasmid DNA (reconstitute with 100 ul of water).

- Reconstitution Method:**
1. Centrifuge at 5,000xg for 5min.
 2. Carefully open the tube and add 100ul of sterile water to dissolve the DNA.
 3. Close the tube and incubate for 10 minutes at room temperature.
 4. Briefly vortex the tube and then do a quick spin (less than 5000xg) to concentrate the liquid at the bottom.
 5. Store the suspended plasmid at -20°C. The DNA is stable for at least one year from date of shipping when stored at -20°C.

RefSeq: [NM_001103169.1](#), [NP_001096639.1](#)

RefSeq Size: 3832 bp

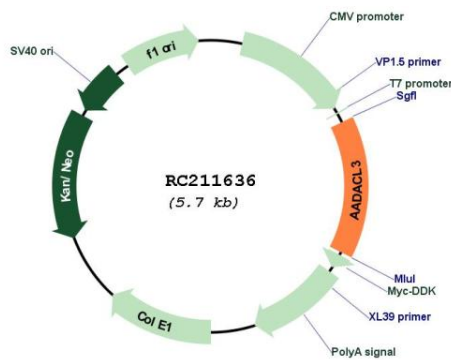
RefSeq ORF: 842 bp

Locus ID: 126767

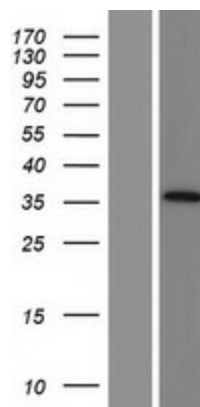
Cytogenetics: 1p36.21

MW: 31.7 kDa

Product images:



Circular map for RC211636



Western blot validation of overexpression lysate (Cat# [LY420199]) using anti-DDK antibody (Cat# [TA50011-100]). Left: Cell lysates from untransfected HEK293T cells; Right: Cell lysates from HEK293T cells transfected with RC211636 using transfection reagent MegaTran 2.0 (Cat# [TT210002]).