

Product datasheet for **RC211625**

TOX2 (NM_001098798) Human Tagged ORF Clone

Product data:

Product Type:	Expression Plasmids
Product Name:	TOX2 (NM_001098798) Human Tagged ORF Clone
Tag:	Myc-DDK
Symbol:	TOX2
Synonyms:	C20orf100; dj495O3.1; dj1108D11.2; GCX-1; GCX1
Mammalian Cell Selection:	Neomycin
Vector:	pCMV6-Entry (PS100001)
E. coli Selection:	Kanamycin (25 ug/mL)



[View online »](#)

ORF Nucleotide Sequence:

>RC211625 representing NM_001098798
 Red=Cloning site Blue=ORF Green=Tags(s)

TTTTGTAATACGACTCACTATAGGGCGGCCGGGAATTCGTCGACTGGATCCGGTACCGAGGAGATCTGCC
 GCC**CGCATCGCC**

ATGCAGCAGACTCGCACAGAGGCTGTGCGGGGCGCCTTCTCTCGTCGCTGGGCTTCTGTGGAATGAGAC
 TCGGGCTCCTTCTACTTGAAGACACTGGTGCATTGCAGGTGTGTTCCGCAGAAGTTGATGGTGACAG
 TGCTACGTGGGGATGAGTGACGAAACCCAGAGCTCCTGTCAACCAGCCAGACCTACAACGCCAGAGC
 GAGAACAACGAAGACTATGAGATCCCCCGATAACACCTCCCAACCTCCCGGAGCCATCCCTCTGCACC
 TGGGGGACCACGAAGCCAGCTACCCTCGTGTGCCACGGCTCACCCCAACGGTCTGCTCCCTGCCTA
 CTCCTATCAGGCCATGGACCTCCAGCCATCATGGTGTCCAACATGCTAGCACAGGACAGCCACCTGCTG
 TCGGGCCAGCTGCCACGATCCAGGAGATGGTCCACTCGGAAGTGGTGCCTATGACTCGGGCCGGCCCG
 GGCCCTGCTGGTGCCTGGCAATGCTGGCCAGCCACATGAGTGCCTCAGCCAGTCCCAGCTCATCTC
 GCAGATGGGCATCCGGAGCAGCATCGCCACAGCTCCCATCACCGCCGGGAGCAAGTCAGCGACCCCC
 TCTCCCTCCAGCTCCACTCAGGAAGAGGAGTCCGAAGTGCATTTCAAGATCTCGGGAGAAAAGAGACCTT
 CAGCCGACCCAGGAAAAAGGCCAAGAACCAGAAAGAAAGAAAAAGAAAGAACCCCAATGAGCCGCAGAA
 GCCTGTGTCGGCTACGCACTCTTCTCAGAGACACTCAGGCCGCATCAAGGGTCAAGACCCAGTGC
 ACTTTCGGTGACGTGTCCAAAATCGTGGCTCCATGTGGGACAGCCTGGGAGAGGAACAGAAGCAGAGCT
 CCCAGATCAAGGTGAGACCAAGAGCACTCAGGCCAAACCCAGCCAAAATGCTCCACCCAAAGCAGCC
 CATGTATGCCATGCCAGGCTGGCTCCTTCTGACGCCGTGGACCTGCAGGCCCTCCGCAGTGGGGCC
 TCCCTGCCAGCCTCGCCCGACGCTGGGCTCCAAGTCTCTGCTGCCAGGCCCTCAGTGCCTCCCGCCGC
 CGCCACCCTCCTCCCGCTCAGCCCCACACTGCACCAGCAGCTGTCACTGCCCCCTCAGCCAGCCAGGCGC
 CCTCCTCAGTCCACCTGTTAGCATGTCCCAGCCCCAGCCCCCTGTCTGCCCCACCCCATGGCACTC
 CAGGTGCAGCTGGCGATGAGCCCTCACCTCCAGGGCCACAGGACTTCCCGCACATCTCTGAGTTCCCA
 GCAGCTCGGGATCCTGCTCACCTGGCCATCCAACCCACCAGCAGCGGGGACTGGGACAGCAGTACCC
 CAGTGGGGAGTGTGGCATCAGCACCTGCAGCCTGCTCCCCAGGGACAAATCGCTCTACCTCACC

ACGCGTACGCGGCCGCTCGAGCAGAAACTCATCTCAGAAGAGGATCTGGCAGCAAATGATATCTGGATT
 ACAAGGATGACGACGATAAGGTTTAA

Protein Sequence:

>RC211625 representing NM_001098798
 Red=Cloning site Green=Tags(s)

MQQTRTEAVAGAFSRCLGFCGMRLGLLLLARHWCIAGVFPQKFDGDSAYVGMSDGNPELLSTSQTYNQGS
 ENNEDYEIPPIITPPNLPEPSLLHLGDHEASYHSLCHGLTPNGLLPAYSQAMDLPAIMVSNMLAQDSHLL
 SGQLPTIQEMVHSEVAAYDSGRPGPLLRPAMLAASHMSALSQSQLISQMGIRSSIAHSSPSPGSKSATP
 SPSSTQEESEVHFKISGEKRPSADPGKKAKNPKKKKKDPNEPQKPVSAAYALFFRDTQAAIKGQNP
 TFGDYSKIVASMWDSLGEQKQSSPDQGETKSTQANPPAKMLPPKQPMYAMPGLASFLTPSDLQAFRSGA
 SPASLARTLGSKSLLPGLSASPPPPSFPLSPTLHQQLSLPPHAQGALLSPPVMSMPAPQPPVLPMPAL
 QVQLAMSPSPGPQDFPHISEFPSSSGSCSPGPSNPTSSGDWSSYPSGECGISTCSLLPRDKSLYLT

TRTRPLEQKLISEEDLAANDILDYKDDDDKV

Chromatograms:

https://cdn.origene.com/chromatograms/mk8065_a08.zip

Restriction Sites:

Sgfl-MluI

Cloning Scheme:

Cloning sites used for ORF Shutting:



* The last codon before the Stop codon of the ORF

ACCN: NM_001098798

ORF Size: 1464 bp

OTI Disclaimer: The molecular sequence of this clone aligns with the gene accession number as a point of reference only. However, individual transcript sequences of the same gene can differ through naturally occurring variations (e.g. polymorphisms), each with its own valid existence. This clone is substantially in agreement with the reference, but a complete review of all prevailing variants is recommended prior to use. [More info](#)

OTI Annotation: This clone was engineered to express the complete ORF with an expression tag. Expression varies depending on the nature of the gene.

Components: The ORF clone is ion-exchange column purified and shipped in a 2D barcoded Matrix tube containing 10ug of transfection-ready, dried plasmid DNA (reconstitute with 100 ul of water).

Reconstitution Method:

1. Centrifuge at 5,000xg for 5min.
2. Carefully open the tube and add 100ul of sterile water to dissolve the DNA.
3. Close the tube and incubate for 10 minutes at room temperature.
4. Briefly vortex the tube and then do a quick spin (less than 5000xg) to concentrate the liquid at the bottom.
5. Store the suspended plasmid at -20°C. The DNA is stable for at least one year from date of shipping when stored at -20°C.

RefSeq: [NM_001098798.2](#)
RefSeq Size: 2428 bp

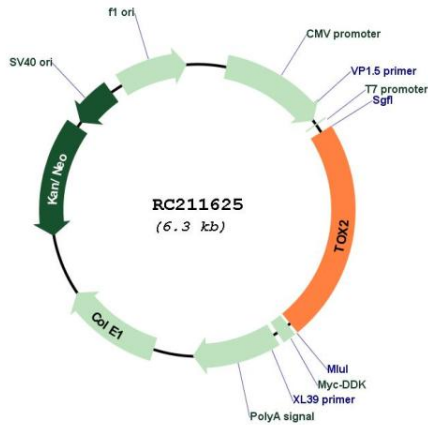
RefSeq ORF: 1467 bp

Locus ID: 84969

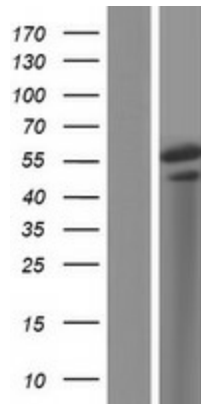
UniProt ID: [Q96NM4](#)
Cytogenetics: 20q13.12

Protein Families: Transcription Factors
MW: 51.4 kDa
Gene Summary: Putative transcriptional activator involved in the hypothalamo-pituitary-gonadal system. [UniProtKB/Swiss-Prot Function]

Product images:



Circular map for RC211625



Western blot validation of overexpression lysate (Cat# [LY420335]) using anti-DDK antibody (Cat# [TA50011-100]). Left: Cell lysates from untransfected HEK293T cells; Right: Cell lysates from HEK293T cells transfected with RC211625 using transfection reagent MegaTran 2.0 (Cat# [TT210002]).