

## Product datasheet for RC211609

### KIAA0240 (GLTSCR1L) (NM\_015349) Human Tagged ORF Clone

#### Product data:

Product Type:	Expression Plasmids
Product Name:	KIAA0240 (GLTSCR1L) (NM_015349) Human Tagged ORF Clone
Tag:	Myc-DDK
Symbol:	KIAA0240
Synonyms:	GLTSCR1L; KIAA0240
Mammalian Cell Selection:	Neomycin
Vector:	pCMV6-Entry (PS100001)
E. coli Selection:	Kanamycin (25 ug/mL)
ORF Nucleotide Sequence:	>RC211609 ORF sequence Red=Cloning site Blue=ORF Green=Tags(s)

TTTTGTAATACGACTCACTATAGGGCGGCCGGAATTCGTCGACTGGATCCGGTACCGAGGAGATCTGCC  
GCC**CGATCGCC**

ATGGATGATGATGACTCGTGTCTCCTTGATCTTATTGGAGACCCACAAGCATTGAACATTTTCTAC  
ATGGACCTAGTAATAAATCTAGCAATGATGACTTGACTAATGCAGGATATTCTGCAGCCAATTCAAATTC  
AATTTTCGCCAATCTAGTAATGCTGATCCTAAGTCATCCCTCAAAGGTGAAGCAACCAGCTTGGAGAA  
GGGCCAGTGATGGACTGCCACTTCAAGTAGCCTCCAGTTTCTTGAAGATGAACCTCGAGTCTTCTCCTC  
TTCCTGATCTCACTGAGGACCAACCTTTGACATTCTTCAGAAATCCTTGCAAGAGGCCAATATCACTGA  
ACAGACATTGGCAGAAGAGGCATATTTGGATGCCAGTATAGGTTCAAGCCAACAGTTTGCACAAGCTCAG  
CTTCATCCTTCTTCATCAGCATCCTTTACTCAGGCTTCTAATGTTTCTAATTACTCAGGTCAGACGCTGC  
AGCCTATAGGGGTGACGCATGTGCCTGTTGGAGCATCGTTTGCAAGCAATACAGTGGGTGTACAACATGG  
CTTTATGCAACATGTGGGGATCAGTGTCCAGCCAGCATTGTCTAATAGCAGTCAGATTAGTGGTTCT  
GGTCAAATACAGTTAATGGGTCATTTGGTAATCATCCTTCCATGATGACTATTAATAACCTAGATGGAT  
CTCAAATCATATTAAGGGCAGCGGCAGCAAGCCCCAATAATGTGAGTGGAGGGCTCCTGGTTCATAG  
ACAGACTCCTAATGGCAACTCCTGTTTGGGAATCTAGTCCAGTCCAGTAGCACAGCCTGTTACCGTT  
CCATTTAACAGCACAAATTTTCAAACATCTTACCTGTGCATAACATCATACAAAGGGGTCTTGCAC  
CAAATTCAAATAAAGTCCCAATTAATATACAGCCAAAGCCTATCCAGATGGGTCAGCAAAATACATACAA  
TGTGAACAATTTGGGAATTCAGCAGCACCACGTACAACAAGGGATCTCTTTTGTCTTGCAAGCTCACCC  
CAGGGCTCAGTAGTTGGTCCACACATGTCTGTGAACATTGTAACCAACAGAACACAAGAAAGCCAGTCA  
CCTCACAGGCAGTGAGCAGCACTGGGGCAGTATTGTTATTCAATCCCCATGGGCCAACCTCACGCACC  
CCAAAGTCAGTTCCTTATACCTACAAGCCTTCTGTGAGTCCAACCTCGGTACACCACGTCCAGACTATA  
AATGGGCAACTTCTTCAAACATGCTCAGGACCAACCAACCATATACTGGACCGATGCTTAACAACCGAA  
TGAACAGAACTCTTCAAACATGCTCAGGACCAACCAACCATATACTGGACCGATGCTTAACAACCGAA  
TACTGCTGTCACCTTAGTGTCTGGGCAGACATTTGCTGCCTCTGGAAGTCCAGTGATAGCCAATCATGCC



[View online »](#)

TCTCCTCAGCTTGTGGGTGGACAGATGCCCTTGCAGCAGGCATCCCCAACTGTATTACACCTGTCACCTG  
 GGCAGAGCAGCGTTTCCCAAGGAAGACCTGGCTTCGCCACCATGCCATCGGTGACAAGCATGTCAGGACC  
 TAGTCGGTTCCCTGCTGTGAGCTCAGCCAGCACTGCCATCCTAGTCTTGGGTCTGCAGTTCAGTCTGGT  
 TCATCAGGATCAAACCTTACAGGAGATCAGCTGACCCAGCCAAACAGGACTCCAGTACCAGTCACTGTGT  
 CTCATCGTCTCCAGTTTCTTCTTCCAAGTCTACCAGCACCTTCAGTAACACACCTGGAACAGGAACCCA  
 GCAACAATTCTTCTGCCAGGCTCAGAAAAATGTCTGAATCAGACTTCCCCATTCTGCTCCCAAGAAC  
 ACAGACGGCTGAGGCAAGCACAGATCCCTGGGCTCTTGAACACCACACTGCCAGGGCAGGATTCTGGAA  
 GCAAAGTTATATCCGCATCCTTAGGAACCGCACAAACCACAGCAGGAAAAAGTAGTTGGATCATCTCTGG  
 CCATCCAGCTGTGCAGGTGGAGAGTCATTCCGGGAGGACAAAAAGGCCTGCTGCGAAACAGCTAACGAAA  
 GGAGCTTTCATTCTCCAGCAGTTGCAGAGGGACCAAGCCACACTGTGACACCAGACAAAAGTCACTTCC  
 GATCACTAAGTGATGCGGTACAGAGACTGCTCTCCTACCAGTGTGCCAGGGCTCCATGCCACTGAAGA  
 AGACTTGAGAAAAGTGGACAATGAATTTGAGACAGTTGCCACTCAGTCTCTAAAAAGGACCCAAGCTATG  
 CTTAAACAATACAGATGCCTGCTCCTAGAAGATGCCATGCGAATCAATCCCTCTGCTGAGATGGTATGA  
 TCGATAGGATGTTCAACCAGGAGGAAAGAGCTTCCCTGTCCGAGACAAGCGTTTGGCACTGTAGACCC  
 TGAGGGTTTTTCAGGCTGATTTCTGTTGTTCTTCAAACCTTGATAAAGCTGCTCATGAGACACAGTTTGGC  
 CGGAGTGACCAGCATGGCAGTAAAGCAAGCAGCTCTGCAACCCGACGCAAGGCCAAGGCCAAGGCAGAGACC  
 GAGCCAAAACCGGTGTGACGGAACCCATGAATCATGACCAGTTTCATCTAGTGCCTAATCACATCGTGGT  
 CTCTGCAGAAGGAAACATTTCTAAAAAACAGAAATGCCTTGGCAGAGCACTGAAATTTGACAAAAGTGGGC  
 TTAGTGCAGTACCAGAGCACGTCTGAAGAGAAGGCCAGCCGGAGAGAGCCTCTGAAGGCCAGTCACTGCT  
 CTCCCGGCCCTGAGGGGACCCGAAAACCTCATCCAGATCGGATCATGGTACTGAGAGCAAACTGTCAAG  
 CATCCTAGCAGATTGCGACTTGGAGATGACGTGTAACAATTCCTCCAGGACAAAAGTCTGAGGAATTCT  
 CCAAAGAATGAAGTTTTACACACAGACATCATGAAAGGGTCAGGCGAACCCAGCCAGATCTCCAGCTGA  
 CAAAGACTTGGAAACCAATTTAAGAATCTTGGAACTCAAAAAGGCGGGACGCGCAAGCCCAAGCTGA  
 CCCACAGGTTAGCGGCTCTGTTGAGTTAGATTTCCCAACTTTTCTCTATGGCTTACAGGAAAACTGC  
 CTGAAAAAGTTTATCCCGGACCACAGTGAAGGTGTTGTAGAACTGACTCCATTTTAGAAGCAGCTGTAA  
 ATAGTATCCTAGAGTGT

ACGCGTACGCGGCCGCTCGAGCAGAACTCATCTCAGAAGAGGATCTGGCAGCAAATGATATCCTGGATT  
 ACAAGGATGACGACGATAAGGTTTAA

**Protein Sequence:**

>RC211609 protein sequence  
 Red=Cloning site Green=Tags(s)

MDDDDSDCLLDLIGDPQALNYFLHGPSNKSNDL TNAGYSAANSNSIFANSSNADPKSSLKGVSNQLGE  
 GPSDGLPLSSSLQFLEDELESSPLPDLTEDQPFILQKSLQEANITEQTLAEAYLDASIGSSQQFAAQ  
 LHPSSASFTQASNVSNYSQTLQPIGVTHVPGASFASNTVGVQHGMQHVGISVPSQHL SNSSQISGS  
 GQIQIGSFGNHP SMMTINNLDGSIILKSGSQAPS NVSGLLVHRQTPNGNSLFGNSSSPVAQPVT  
 PFNSTNFQTSLPVHNI IQRGLAPNSNKVPINIQPKPIQMGQONTYNVNNLGIQQHHVQGGISFASASSP  
 QGSVVGPHMSVNI VNVQNTKPVTSQAVSSTGGSIVIHSPMGQPHAPQSQFLIPTSLSVSSNSVHHVQTI  
 NGQLLQTQPSQLISGQVASEHVMLNRNSSNMLRTNQPYTGPMNNQNTAVHLVSGQTF AASGSPVIANHA  
 SPQLVGGQMPLQQASPTVLHLSPGQSSVSQGRPGFATMPSVTSMSGSPRFPAVSSASTAHPSLGSAVQSG  
 SSGSNFTGDQLTQPNRTPVPVSVSHRPLVSSSKSTSTFNTPGTGTQQQFFCQAQKCLNQTSPI SAPKT  
 TDGLRQAQIPGLLSTTLPQDSDGSKVISASLGTAPQEQEVVGVSSPGHPAVQVESHSQKRPAAKQLTK  
 GAFILQQLQRDQAHTVTPDKSHFRSLSDAVQRLLSYHVCQGSMPTEEDLRKVDNEFETVATQLLKRTOAM  
 LNKYRCLLLEDAMRINPSAEMVMIDRMFNQEERASLSRDKRLALVDPEGFQADFCSSFKLDKAAHETQFG  
 RSDQHGSKASSSLQPPAKAQGRDRAKTGVTEPMNHDQFHLVFNHIVVSAEGNISKKTECLGRALKFDKVG  
 LVQYQSTSEEKASRREPLKASQCSPGPEGRKTSRSDHGTESKLSLILADSHLEMTCNNSFQDKSLRNS  
 PKNEVLHTDIMKSGEPQPDQLTKSLETTFKNILELKKAGRQPSDPTVSGSVLEDFPNFSPMASQENC  
 LEKFIPDHSEGVVETDSILEAAVNSILEC

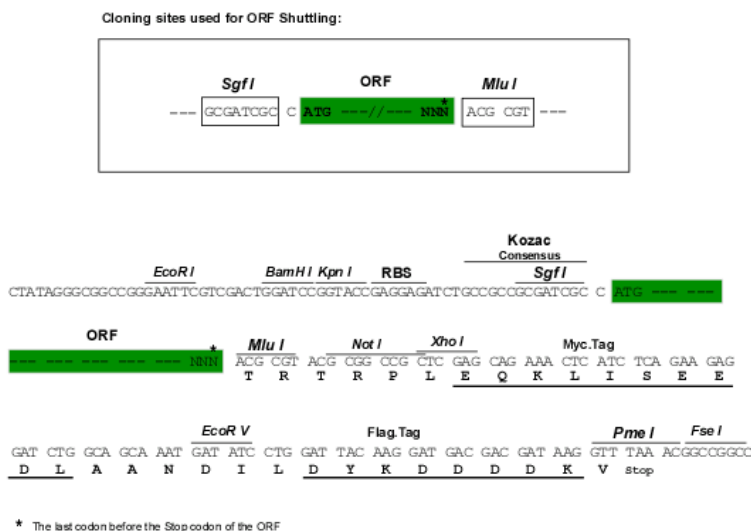
TRTRPLEQKLI SEEDLAANDILDYKDDDDKV

**Chromatograms:**

[https://cdn.origene.com/chromatograms/mk6605\\_c05.zip](https://cdn.origene.com/chromatograms/mk6605_c05.zip)

**Restriction Sites:** SgfI-MluI

**Cloning Scheme:**



**ACCN:** NM\_015349

**ORF Size:** 3237 bp

**OTI Disclaimer:** The molecular sequence of this clone aligns with the gene accession number as a point of reference only. However, individual transcript sequences of the same gene can differ through naturally occurring variations (e.g. polymorphisms), each with its own valid existence. This clone is substantially in agreement with the reference, but a complete review of all prevailing variants is recommended prior to use. [More info](#)

**OTI Annotation:** This clone was engineered to express the complete ORF with an expression tag. Expression varies depending on the nature of the gene.

**Components:** The ORF clone is ion-exchange column purified and shipped in a 2D barcoded Matrix tube containing 10ug of transfection-ready, dried plasmid DNA (reconstitute with 100 ul of water).

**Reconstitution Method:**

1. Centrifuge at 5,000xg for 5min.
2. Carefully open the tube and add 100ul of sterile water to dissolve the DNA.
3. Close the tube and incubate for 10 minutes at room temperature.
4. Briefly vortex the tube and then do a quick spin (less than 5000xg) to concentrate the liquid at the bottom.
5. Store the suspended plasmid at -20°C. The DNA is stable for at least one year from date of shipping when stored at -20°C.

**RefSeq:** [NM\\_015349.2](#), [NP\\_056164.1](#)

**RefSeq Size:** 6520 bp

**RefSeq ORF:** 3240 bp

**Locus ID:** 23506

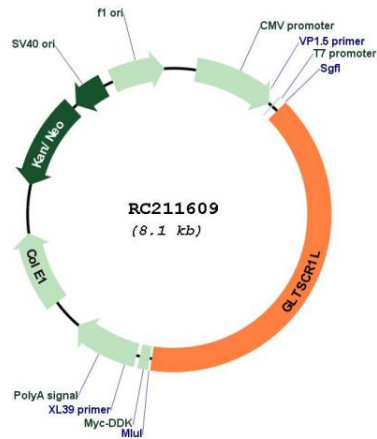
UniProt ID: [Q6AI39](#)

Cytogenetics: 6p21.1

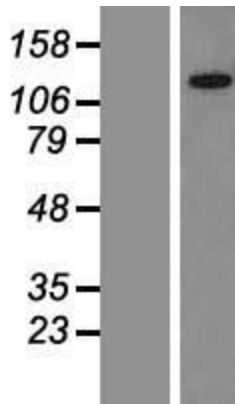
MW: 115.1 kDa

Gene Summary: Component of SWI/SNF chromatin remodeling subcomplex GBAF that carries out key enzymatic activities, changing chromatin structure by altering DNA-histone contacts within a nucleosome in an ATP-dependent manner.[UniProtKB/Swiss-Prot Function]

**Product images:**



Circular map for RC211609



Western blot validation of overexpression lysate (Cat# [LY414609]) using anti-DDK antibody (Cat# [TA50011-100]). Left: Cell lysates from untransfected HEK293T cells; Right: Cell lysates from HEK293T cells transfected with RC211609 using transfection reagent MegaTran 2.0 (Cat# [TT210002]).