

Product datasheet for **RC211599**

cIAP2 (BIRC3) (NM_182962) Human Tagged ORF Clone

Product data:

Product Type:	Expression Plasmids
Product Name:	cIAP2 (BIRC3) (NM_182962) Human Tagged ORF Clone
Tag:	Myc-DDK
Symbol:	cIAP2
Synonyms:	AIP1; API2; c-IAP2; CIAP2; HAIP1; HIAP1; IAP-1; MALT2; MIHC; RNF49
Mammalian Cell Selection:	Neomycin
Vector:	pCMV6-Entry (PS100001)
E. coli Selection:	Kanamycin (25 ug/mL)



[View online »](#)

ORF Nucleotide Sequence:

>RC211599 ORF sequence
 Red=Cloning site Blue=ORF Green=Tags(s)

TTTTGTAATACGACTCACTATAGGGCGGCCGGAATTCGTCGACTGGATCCGGTACCGAGGAGATCTGCC
 GCC**CGCATCGCC**

ATGAACATAGTAGAAAACAGCATATTCTTATCAAATTTGATGAAAAGCGCCAACACGTTTGAACGAAAT
 ACGACTTGTGATGAACTGTACCGAATGTCTAGTATTCACCTTTTCTGCTGGGTTCCCTGTCTCAGA
 AAGGAGTCTTGCTCGTGTGTTTCTATTACACTGGTGTGAATGACAAGGTCAAATGCTTCTGTTGTGGC
 CTGATGCTGGATAACTGGAAAAGAGGAGACAGTCTACTGAAAAGCATAAAAAAGTTGTATCCTAGCTGCA
 GATTCGTTTCTAGAGTCTAAATCCGTTAAACAACCTTGAAGTACCTCTCAGCCTACTTTTCTTCTCAGT
 AACAAATCCACACACTCATTACTTCCGGGTACAGAAAACAGTGGATATTTCCGTGGCTCTTATTCAAAC
 TCTCCATCAAATCCTGTAACCTCCAGAGCAAATCAAGATTTTTCTGCCTTGATGAGAAGTCTACCCT
 GTGCAATGAATAACGAAAATGCCAGATTACTTACTTTTTCAGACATGGCCATTGACTTTTCTGTCGCCAAC
 AGATCTGGCAAAAAGCAGGCTTTTACTACATAGGACCTGGAGACAGAGTGGCTTGTCTTCCGCTGTGGTGA
 AAATTGAGCAATTGGGAACCGAAGGATAATGCTATGTCAGAACACCTGAGACATTTTCCCAAATGCCCAT
 TTATAGAAAATCAGCTTCAAGACACTTCAAGATACACAGTTTCTAATCTGAGCATGCAGACACATGCAGC
 CCGCTTTAAAACATTCTTAACTGGCCCTCTAGTGTCTAGTAACTCCTGAGCAGCTTGAAGTGGGGT
 TTTTATTATGTGGGTAACAGTGTATGTCAAATGCTTTTGTGTGATGGTGGACTCAGGTGTTGGGAAT
 CTGGAGATGATCCATGGGTTCAACATGCCAAGTGGTTTCAAGGTGTGAGTACTTGATAAGAATTAAGG
 ACAGGAGTTTATCCGTCAGTCAAGTCAAGCCAGTTACCCTCATCTACTGAAACAGTGTCTATCCACATCAGAC
 AGCCCAGGAGATGAAAATGCAGAGTCAATCAATATCCATTTTGAACCTGGAGAAGACCATCAGAAGATG
 CAATCATGATGAATACTCCTGTGATTAATGCTGCCGTGGAAATGGGCTTATAGTAGAACCTGGTAAACA
 GACAGTTTCAGAGAAAAATCTAGCAACTGGAGAGAATTATAGACTAGTCAATGATCTTGTGTAGACTTA
 CTAATGCAGAAGATGAAATAAGGGAAGAGGAGAGAGAAAAGCAACTGAGGAAAAAGAATCAAATGATT
 TATTATTAATCCGGAAGAATAGAATGGCACTTTTTCAACATTTGACTTGTGTAATCCAATCCTGGATAG
 TCTACTAACTGCCGAATTATTAATGAACAAGAACATGATGTTATTAACAGAAGACACAGACGCTTTTA
 CAAGCAAGAGAAGTATTGATACGATTTTAGTAAAAGGAAATATTGCAGCCACTGTATTCCAGAACTCTC
 TGCAAGAAGCTGAAGCTGTGTTATATGAGCATTATTTGTGCAACAGGACATAAAAATATATTTCCACAGA
 AGATGTTTTCAGATCTACCAGTGAAGAACAATTGCGGAGACTACAAGAAGAAAGAACATGTAAGTGTGT
 ATGGACAAAGAAGTGTCCATAGTGTATTCCTTGTGGTCACTAGTAGTATGCAAGATTGTGCTCCTT
 CTTAAGAAAGTGTCTATTTGTAGGAGTACAATCAAGGGTACAGTTCGTACATTTCTTTCA

ACGCGTACGCGGCCGCTCGAGCAGAAACTCATCTCAGAAGAGGATCTGGCAGCAAATGATATCCTGGATT
 ACAAGGATGACGACGATAAGGTTTAA

Protein Sequence:

>RC211599 protein sequence
 Red=Cloning site Green=Tags(s)

MNIVENSIFLSNLMKSANTFELKYDLSCELYRMSTYSTFPAGVPVSERSLARAGFYTGVNDKVKCFCCG
 LMLDNWKRGDSPTEKHKLYPSCRQVQSLNSVNNLEATSQPTFPSSVTNTHSLLPGTENSGYFRGYSYN
 SPSNPVNSRANQDF SALMRSSYHCAMNNENARLLTFQWPLTFLSPTDLAKAGFYIYGPGRVACFACGG
 KLSNWEPKDNAMSEHLRHFPKCPFIENQLQDTSRYTVSNLSMQTHAARFKTFNWPSSVLVNPEQLASAG
 FYYVGNSSDDVKCFCCDGLRCWESGDDPWVQHAKWFPCEYLIRIKGQEFIRQVQASYPHLLLEQLLSTSD
 SPGDENAESSIIHFEPGEDHSEDAIMMNTPVINA AAVEMGFSRSLVKQTVQRKILATGENYRLVNDLVLDL
 LNAEDEIREEERERATEEKE SNDLLLIRKNRMALFQHLTCVIPILDSLLTAGIINEQEHDVIKQKQTSL
 QARELIDTILVKGNIAATVFRNSLQEA EAVLYEHLFVQQDIKYIPTEDVSDLPVEEQLRRLQEERTCKVK
 MDKEVSIVFIPCGHLVVKDCAPSLRKPCICRSTIKGTVRTFLS

TRTRPLEQKLISEEDLAANDILDYKDDDDKV

Chromatograms:

https://cdn.origene.com/chromatograms/mk6343_d08.zip

Restriction Sites: SgfI-MluI

Cloning Scheme:



ACCN: NM_182962

ORF Size: 1812 bp

OTI Disclaimer: The molecular sequence of this clone aligns with the gene accession number as a point of reference only. However, individual transcript sequences of the same gene can differ through naturally occurring variations (e.g. polymorphisms), each with its own valid existence. This clone is substantially in agreement with the reference, but a complete review of all prevailing variants is recommended prior to use. [More info](#)

OTI Annotation: This clone was engineered to express the complete ORF with an expression tag. Expression varies depending on the nature of the gene.

Components: The ORF clone is ion-exchange column purified and shipped in a 2D barcoded Matrix tube containing 10ug of transfection-ready, dried plasmid DNA (reconstitute with 100 ul of water).

Reconstitution Method:

1. Centrifuge at 5,000xg for 5min.
2. Carefully open the tube and add 100ul of sterile water to dissolve the DNA.
3. Close the tube and incubate for 10 minutes at room temperature.
4. Briefly vortex the tube and then do a quick spin (less than 5000xg) to concentrate the liquid at the bottom.
5. Store the suspended plasmid at -20°C. The DNA is stable for at least one year from date of shipping when stored at -20°C.

RefSeq: [NM_182962.3](#)

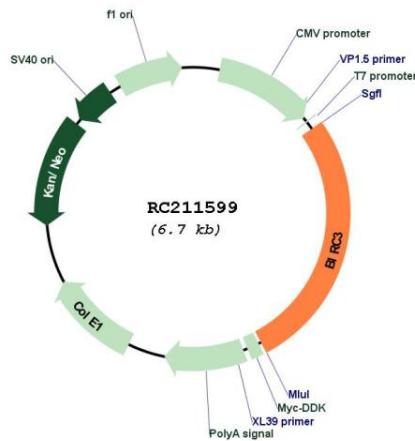
RefSeq Size: 4372 bp

RefSeq ORF: 1815 bp

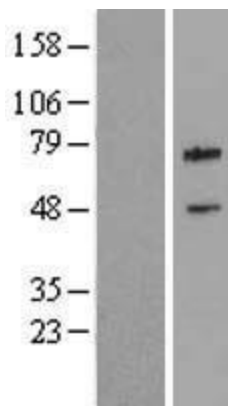
Locus ID: 330

UniProt ID:	<u>Q13489</u>
Cytogenetics:	11q22.2
Protein Families:	Druggable Genome
Protein Pathways:	Apoptosis, Focal adhesion, NOD-like receptor signaling pathway, Pathways in cancer, Small cell lung cancer, Ubiquitin mediated proteolysis
MW:	68.4 kDa
Gene Summary:	This gene encodes a member of the IAP family of proteins that inhibit apoptosis by binding to tumor necrosis factor receptor-associated factors TRAF1 and TRAF2, probably by interfering with activation of ICE-like proteases. The encoded protein inhibits apoptosis induced by serum deprivation but does not affect apoptosis resulting from exposure to menadione, a potent inducer of free radicals. It contains 3 baculovirus IAP repeats and a ring finger domain. Transcript variants encoding the same isoform have been identified. [provided by RefSeq, Aug 2011]

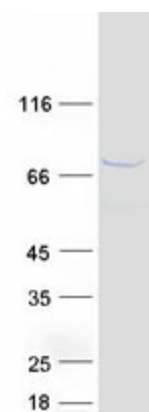
Product images:



Circular map for RC211599



Western blot validation of overexpression lysate (Cat# [LY405280]) using anti-DDK antibody (Cat# [TA50011-100]). Left: Cell lysates from untransfected HEK293T cells; Right: Cell lysates from HEK293T cells transfected with RC211599 using transfection reagent MegaTran 2.0 (Cat# [TT210002]).



Coomassie blue staining of purified BIRC3 protein (Cat# [TP311599]). The protein was produced from HEK293T cells transfected with BIRC3 cDNA clone (Cat# RC211599) using MegaTran 2.0 (Cat# [TT210002]).