

Product datasheet for RC211598

CLEC10A (NM_006344) Human Tagged ORF Clone

Product data:

Product Type:	Expression Plasmids
Product Name:	CLEC10A (NM_006344) Human Tagged ORF Clone
Tag:	Myc-DDK
Symbol:	CLEC10A
Synonyms:	CD301; CLECSF13; CLECSF14; HML; HML2; MGL
Mammalian Cell Selection:	Neomycin
Vector:	pCMV6-Entry (PS100001)
E. coli Selection:	Kanamycin (25 ug/mL)
ORF Nucleotide Sequence:	>RC211598 representing NM_006344 Red=Cloning site Blue=ORF Green=Tags(s)

TTTTGTAATACGACTCACTATAGGGCGGCCGGAATTCGTCGACTGGATCCGGTACCGAGGAGATCTGCCGCCCGCATCGCC

ATGACAAGGACGTATGAAAACCTCCAGTACTTGGAGAATAAGGTGAAAGTCCAGGGGTTAAAAATGGGC
CACTTCTCTCCAGTCCCTCCTGCAGCGTCTCTGCTCTGGGCCCTGCCATCTCTGCTGTCCCTGGGCCT
CGGCCTCTGCTGCTGGTTCATCTGTGTGGTTGGATTCCAAAATTCAAAATTCAGAGGGACCTGGTG
ACCCTGAGAACAGATTTAGCAACTTCACCTCAAACACTGTGGCGGAGATCCAGGCACTGACTTCCCAGG
GCAGCAGCTTGAAGAAACGATAGCATCTCTGAAAGCTGAGGTGGAGGGTTCAAGCAGGAACGGCAGGC
AGTTCATTCTGAAATGCTCCTGCGAGTCCAGCAGCTGGTGAAGACCTGAAGAAAATGACCTGCCAGGTG
GCTACTCTCAACAACAATGGTGAGGAAGCCTCCAAGGGACCTGCTGCCCTGTCAACTGGGTGGAGC
ACCAAGACAGCTGCTACTGGTTCTCACTCTGGGATGTCTGGGCCGAGGCTGAGAAGTACTGCCAGCT
GAAGAAGCCACCTGGTGGTCACTCAACTCCAGGGAGGAGCAGAAATTTGTCCAGAAATATCTAGGCTCC
GCATACACCTGGATGGGCCTCAGTGACCCTGAAGGAGCCTGGAAGTGGGTGGATGGAACAGACTATGCGA
CCGGCTTCCAGAACTGGAAGCCAGGCCAGCCAGCAGCTGGCAGGGGCACGGGCTGGGTGGAGCCGAGGA
CTGTGCTCACTTCCATCCAGACGGCAGGTGGAATGACGACGTCTGCCAGAGGCCCTACCACTGGGTCTGC
GAGGCTGGCCTGGGTGAGCCAGCCAGGAGATCAC

ACGCGTACGCGGCCGCTCGAGCAGAAAACCTCATCTCAGAAGAGGATCTGGCAGCAAATGATATCTGGATT
ACAAGGATGACGACGATAAGGTTTAA



[View online »](#)

Protein Sequence: >RC211598 representing NM_006344
Red=Cloning site Green=Tags(s)

MTRTYENFQYLENKVKVQGFKNGLPLQSLQLRLCSGPCHLLLSLGLGLLLLVIICVVGFQNSKFQRDLV
 TLRTDFSNFTSNTVAEQALTSQGSLEETIASLKAIEVEGFKQERQAVHSEMLLRVQQLVQDLKKLTCQV
 ATLNNGEEASTEGTCCPVNWEHQDSCYWF SHSGMSWAEAEKYCQLKNAHLVVINSREEQNFVQKYLGS
 AYTWMGLSDPEGAWKWDGTDYATGFGQNWKPGQPDDWQGHGLGGGEDCAHFHPDGRWDDVCQRPYHWVC
 EAGLGQTSQESH

TRTRPLEQKLISEEDLAANDILDYKDDDDKV

Chromatograms: https://cdn.origene.com/chromatograms/mg3397_b07.zip

Restriction Sites: SgfI-MluI

Cloning Scheme:



ACCN: NM_006344

ORF Size: 876 bp

OTI Disclaimer: The molecular sequence of this clone aligns with the gene accession number as a point of reference only. However, individual transcript sequences of the same gene can differ through naturally occurring variations (e.g. polymorphisms), each with its own valid existence. This clone is substantially in agreement with the reference, but a complete review of all prevailing variants is recommended prior to use. [More info](#)

OTI Annotation: This clone was engineered to express the complete ORF with an expression tag. Expression varies depending on the nature of the gene.

Components: The ORF clone is ion-exchange column purified and shipped in a 2D barcoded Matrix tube containing 10ug of transfection-ready, dried plasmid DNA (reconstitute with 100 ul of water).

Reconstitution Method:

1. Centrifuge at 5,000xg for 5min.
2. Carefully open the tube and add 100ul of sterile water to dissolve the DNA.
3. Close the tube and incubate for 10 minutes at room temperature.
4. Briefly vortex the tube and then do a quick spin (less than 5000xg) to concentrate the liquid at the bottom.
5. Store the suspended plasmid at -20°C. The DNA is stable for at least one year from date of shipping when stored at -20°C.

RefSeq: [NM_006344.4](#)

RefSeq Size: 1716 bp

RefSeq ORF: 879 bp

Locus ID: 10462

UniProt ID: [Q8IUUN9](#)

Cytogenetics: 17p13.1

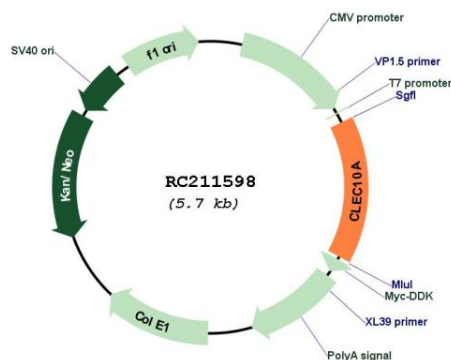
Domains: CLECT, lectin_N

Protein Families: Transmembrane

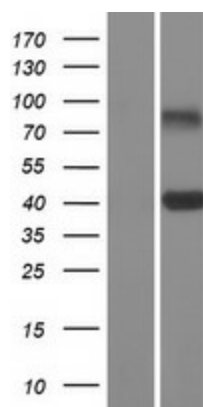
MW: 32.7 kDa

Gene Summary: This gene encodes a member of the C-type lectin/C-type lectin-like domain (CTL/CTLD) superfamily. Members of this family share a common protein fold and have diverse functions, such as cell adhesion, cell-cell signalling, glycoprotein turnover, and roles in inflammation and immune response. The encoded type 2 transmembrane protein may function as a cell surface antigen. Two transcript variants encoding distinct isoforms have been identified for this gene. [provided by RefSeq, Jul 2008]

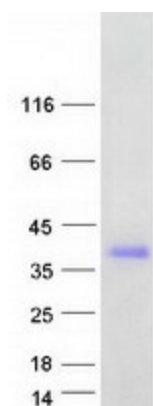
Product images:



Circular map for RC211598



Western blot validation of overexpression lysate (Cat# [LY416712]) using anti-DDK antibody (Cat# [TA50011-100]). Left: Cell lysates from untransfected HEK293T cells; Right: Cell lysates from HEK293T cells transfected with RC211598 using transfection reagent MegaTran 2.0 (Cat# [TT210002]).



Coomassie blue staining of purified CLEC10A protein (Cat# [TP311598]). The protein was produced from HEK293T cells transfected with CLEC10A cDNA clone (Cat# RC211598) using MegaTran 2.0 (Cat# [TT210002]).