

Product datasheet for RC211595

PRTG (NM_173814) Human Tagged ORF Clone

Product data:

Product Type:	Expression Plasmids
Product Name:	PRTG (NM_173814) Human Tagged ORF Clone
Tag:	Myc-DDK
Symbol:	PRTG
Synonyms:	IGDCC5
Mammalian Cell Selection:	Neomycin
Vector:	pCMV6-Entry (PS100001)
E. coli Selection:	Kanamycin (25 ug/mL)
ORF Nucleotide Sequence:	>RC211595 representing NM_173814 Red=Cloning site Blue=ORF Green=Tags(s)

TTTTGTAATACGACTCACTATAGGGCGGCCGGAATTCGTCGACTGGATCCGGTACCGAGGAGATCTGCC
GCC**CGATCGCC**

ATGGCGCCTCCTCTGCGACCCCTCGCCCGGCTGCGACCGCCGGGGATGCTGCTCCGCGCCTCCTGCTCC
TGCTGCTGCTCAGTCCTTTGCCAGGAGTGTGGTCTTTAGCGAACTGTCTTTTGTAAAAGAACCACAGGA
TGTAACGTGCACAAGAAAGGACCCAGTCGTTTTAGATTGCCAGGCTCACGGAGAAGTTCTATTAAGGTC
ACATGGTTGAAAAATGGAGCAAAAATGTCTGAAAATAAACGGATCGAGGTTCTTTCTAACGGCTCTTTAT
ACATCAGTGAGGTGGAAGGCAGGCGAGGAGAGCAGTCCGATGAAGGATTTTATCAGTGCTGGCAATGAA
CAAATATGGAGCCATTCTTAGTCAAAAAGCTCATCTTGCCTTATCAACTATTTCTGCATTGAAAGTCCAG
CCAATTTCCACTGAGGTCCACGAAGGTGGAGTTGCTCGATTTGCATGCAAGATTTTATCCACCCTCCTG
CAGTCATAACATGGGAGTTCAATCGGACAACTCTACCTATGACTATGGACAGGATAAAGTCCCTACCAAC
AGGAGTATTGCAGATCTATGATGTCAGCCAAAGGATTCTGGAAATTATCGTTGTATTGCTGCCACTGTA
GCCCACCGACGTAAAAGTATGGAGGCCTCGTAACTGTGATTCCAGCTAAGGAGTCAAAATCCTCCACA
CACCAACAATTATAGCAGGTCCACAGAACATAACAACATCTTTCATCAGACTGTAGTTTTGGAATGCAT
GGCCACAGGAAATCCCAAACCAATCATTCTTGGAGCCGCCTTGATCACAATCCATTGATGCTTTAAT
ACTCGGTACTTGGAAATGGTAATCTCATGATATCTGATGTCAGGCTACAACATGCTGGAGTATATGTTT
GTCGGGCCACTACCCCTGGCACACGCAACTTTACAGTTGCTATGGCAACTTTAACTGTATTAGCTCCTCC
TTCATTTGTTGAATGGCCAGAAAGTTTAAACAAGCCTCGAGCTGGCACTGCTCGATTTGTGTGTCAGGCA
GAAGGAATCCCCTCTCCAAGATGTCATGGTTGAAAAATGGAAGGAAGATACATTCGAATGGTAGAATTA
AAATGTACAACAGTAAATTGGTAATTAACCAGATTATTCCTGAAGATGATGCTATTTATCAGTGATGCG
TGAGAATAGCCAAGGATCTATTTTATCTAGAGCCAGACTGACTGTAGTATGTCAGAAGACAGACCCAGT
GCTCCCTATAATGTACATGCTGAAACCATGTCAAGCTCAGCCATTCTTTAGCCTGGGAGAGGCCACTTT
ATAATTCAGACAAAGTCATTGCCTATTCTGTACACTACATGAAAGCAGAAGGTTTAAATAATGAAGAGTA
TCAAGTAGTCATCGGAAATGACACAACCTATTATATTATTGATGACTTAGAGCCTGCCAGCAATTATACT



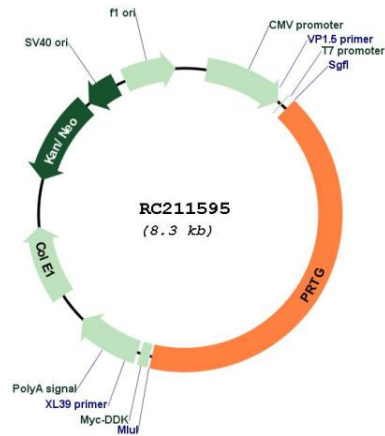
[View online »](#)

TTCTACATTGTAGCATATATGCCAATGGGAGCCAGCCAGATGTCTGACCATGTGACACAGAATACTCTAG
AGGATGTTCCCCTGAGACCTCTGAAATAGTTTGACAAGTCGAAGTCCCCTGATATTCTCATCTCCTG
GCTGCCAATCCCAGCCAAATATCGGCGGGGCAAGTGGTGTGTATCGCTTGTCTTTCCGCCTAAGTACT
GAGAATCAATCCAAGTTCTGGAGCTCCCGGGGACCACGCATGAGTACCTTTTGGAAAGCCCTGAAACCTG
ACAGTGTCTACCTGGTTCGGATTACTGCTGCCACCAGAGTGGGGCTGGGAGAGTCATCAGTATGGACTTC
ACATAGGACGCCCAAAGCTACAAGCGTGAAGCCCTAAGTCTCCAGAGTTGCATTTGGAGCCTCTGAAC
TGTACCACCTTTCTGTGAGGTGGCAGCAAGATGTAGAGGACACAGCTGCTATTACAGGGCTACAAGCTGT
ACTACAAGGAAGAAGGGCAGCAGGAGAATGGGCCCATTTTCTTGATACCAAGGACCTACTCTATCTCT
CAGTGGCTTAGACCCAGAAAGAAATATCATGTGAGACTCCTGGCTTACAACAACATAGACGATGGCTAT
CAGGCAGATCAGACTGTCAGCACTCCAGGATGCGTGTCTGTTCTGATCGCATGGTCCCTCCTCCACCAC
CACCCACCATCTCTATGCGAAGGCTAACACCTCATCTCCATCTTCTGCACTGGAGGAGGCTGCATT
CACCGCTGCACAAATCATTAACTACACCATCCGCTGTAATCCTGTTGGCCTGCAGAATGCTTCTTTGGTT
CTGTACCTTCAAACATCAGAACTCACATGTTGGTTCAAGGTCTAGAACCAAACACCAAATACGAATTTG
CCGTTTCGATTACATGTGGATCAGCTTCCAGTCTTGGAGCCCTGTAGTCTACCATTCTACTCTTCCAGA
AGCACCAGCAGGCCACCAGTTGGAGTAAAAGTGACATTAATAGAGGATGACACTGCCCTGGTTTCTTGG
AAACCCCTGATGGCCAGAAACAGTTGTGACCCGCTATACTATCTTATATGCATCTAGGAAGCCCTGGA
TTGCAAGGAGAGTGGCAGGTCTTACACCGTGAAGGGCAATAACCATGGCTTTGCTAGAAAACCTGGTAGC
AGGAAATGTGTACATTGTCAAGATATCTGCATCCAATGAGGTGGGAGAAGGACCCCTTTTCAAATCTGTG
GAGCTGGCAGTACTTCAAAGGAAACCTCTGAATCAAAATCAGAGGCCCAAGCGTTTAGATTCTGTGATG
CCAAAGTTTATTACAGGATATTACCATCTGGACCAAAAATCAATGACTGGCATTGCTGTAGGTGTTGGCAT
AGCCTTGACCTGCATCCTCATCTGTGTTCTCATCTTGATATACCGAAGTAAAGCCAGGAAATCATCTGCT
TCCAAGACGGCACAGAATGGAACCTCAACAGTTACCTCGTACCAGTGCCTCCTTAGCTAGTGGAAATGAGG
TAGGAAAGAACCCTGGAAGGAGCTGTAGGAAATGAAGAATCTTAAATGCCAATGATCATGCCAAACAGCTT
CATTGATGCAAAGGGAGGAACTGACCTGATAATTAATAGCTATGGTCCTATAATTAATAAACAACCTAAG
AAAAAGTGGTTTTTTTTTCCAAGACTCAAAGAAGATACAAGTTGAGCAGCCTCAAAGAAGATTTACTCCAG
CGGTCTGCTTTTACCAGCCAGGCACCACTGTATTAATCAGTGATGAAGACTCCCCTAGCTCCCCAGGTCA
GACAACCAGCTTCTCAAGACCCTTTGGTGTGAGCTGATACAGAACATTCAGCAAATAGTGAAGGCAGC
CATGAGACTGGGATTCTGGGCGTTTTCTCATGAGTCCAACGATGAGATACATCTGTCCTCAGTTATAA
GTACCACACCCCAACCTC

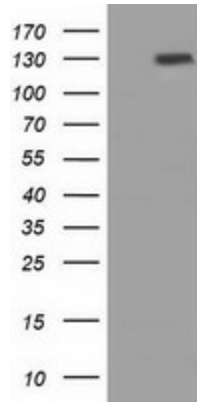
ACGCGTACGCGGCCGCTCGAGCAGAACTCATCTCAGAAGAGGATCTGGCAGCAAATGATATCCTGGATT
ACAAGGATGACGACGATAAGGTTTAA

OTI Disclaimer:	The molecular sequence of this clone aligns with the gene accession number as a point of reference only. However, individual transcript sequences of the same gene can differ through naturally occurring variations (e.g. polymorphisms), each with its own valid existence. This clone is substantially in agreement with the reference, but a complete review of all prevailing variants is recommended prior to use. More info
OTI Annotation:	This clone was engineered to express the complete ORF with an expression tag. Expression varies depending on the nature of the gene.
Components:	The ORF clone is ion-exchange column purified and shipped in a 2D barcoded Matrix tube containing 10ug of transfection-ready, dried plasmid DNA (reconstitute with 100 ul of water).
Reconstitution Method:	<ol style="list-style-type: none">1. Centrifuge at 5,000xg for 5min.2. Carefully open the tube and add 100ul of sterile water to dissolve the DNA.3. Close the tube and incubate for 10 minutes at room temperature.4. Briefly vortex the tube and then do a quick spin (less than 5000xg) to concentrate the liquid at the bottom.5. Store the suspended plasmid at -20°C. The DNA is stable for at least one year from date of shipping when stored at -20°C.
RefSeq:	NM_173814.6
RefSeq Size:	4115 bp
RefSeq ORF:	3453 bp
Locus ID:	283659
UniProt ID:	Q2VWP7
Cytogenetics:	15q21.3
Protein Families:	Transmembrane
MW:	126.9 kDa
Gene Summary:	This gene encodes a member of the immunoglobulin superfamily. The encoded transmembrane protein has been associated with the development of various tissues, especially neurogenesis. It has been suggested that this gene may be associated with attention deficit hyperactivity disorder (ADHD). [provided by RefSeq, Nov 2014]

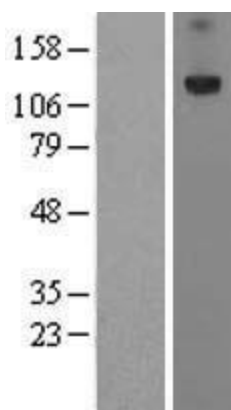
Product images:



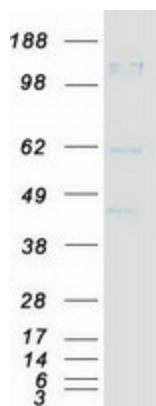
Circular map for RC211595



HEK293T cells were transfected with the pCMV6-ENTRY control (Cat# [PS100001], Left lane) or pCMV6-ENTRY PRTG (Cat# RC211595, Right lane) cDNA for 48 hrs and lysed. Equivalent amounts of cell lysates (5 ug per lane) were separated by SDS-PAGE and immunoblotted with anti-PRTG (Cat# [TA501394]). Positive lysates [LY406425] (100ug) and [LC406425] (20ug) can be purchased separately from OriGene.



Western blot validation of overexpression lysate (Cat# [LY406425]) using anti-DDK antibody (Cat# [TA50011-100]). Left: Cell lysates from untransfected HEK293T cells; Right: Cell lysates from HEK293T cells transfected with RC211595 using transfection reagent MegaTran 2.0 (Cat# [TT210002]).



Coomassie blue staining of purified PRTG protein (Cat# [TP311595]). The protein was produced from HEK293T cells transfected with PRTG cDNA clone (Cat# RC211595) using MegaTran 2.0 (Cat# [TT210002]).