

## Product datasheet for RC211591

### GSG1 (NM\_001080554) Human Tagged ORF Clone

#### Product data:

|                           |  |
|---------------------------|--|
| Product Type:             | Expression Plasmids  |
| Product Name:             | GSG1 (NM_001080554) Human Tagged ORF Clone                                     |
| Tag:                      | Myc-DDK  |
| Symbol:                   | GSG1   |
| Mammalian Cell Selection: | Neomycin   |
| Vector:                   | pCMV6-Entry (PS100001)   |
| E. coli Selection:        | Kanamycin (25 ug/mL)   |
| ORF Nucleotide Sequence:  | >RC211591 representing NM_001080554<br>Red=Cloning site Blue=ORF Green=Tags(s) |

TTTTGTAATACGACTCACTATAGGGCGGCCGGAATTCGTCGACTGGATCCGGTACCGAGGAGATCTGCC  
GCC**CGATCGCC**

ATGAGCGATCCCTCTCAACTGACTCAAAATGTTTGCCCTCACCCAGGAGATGGAGCTCTCGAAGGCCTTCT  
CTGGCCAGCGGACACTCCTATCTGCCATCCTCAGCATGCTATCACTCAGCTTCTCCACAACATCCCTGCT  
CAGCAACTACTGGTTTGTGGGCACACAGAAGGTGCCAAGCCCTGTGCGAGAAAGGTCTGGCAGCCAAG  
TGCTTTGACATGCCAGTGTCCCTGGATGGAGATACCAACACATCCACCCAGGAGGTGTTACAATACAAC  
GGGAGACTGGGGATGACCGTTCTCCTCCGGAGCTCCGGAGTGGCATGTGGCTATCCTGTGAGGAAAC  
TGTGGAAGAACCAGCACTGCTCCATCCCCAGTCCCTGGAACAATTTAGAGCCCTTCGGTCCAGTGGTACA  
GCGGCAGCAAAAGGGGAGAGGTGCCGAAGTTTCATTGAACTTACACCACCAGCCAAGAGAGGTGAGAAAG  
GACTACTGGAATTTGCCACGTTGCAAGGCCATGTCAACCCACTCTCCGATTTGGAGGGAAGCGTTGAT  
GGAGAAGGCTTCCCTCCCTCCCTCCCTTGGGCTTTGTGGCAAAAATCCTATGGTTATCCCTGGGAAC  
GCAGATCACCTACATCGGACTTCAATTCATCAGCTTCTCCTGCTACTAACAGACTTGCTACTACTGGG  
AACCTGCCTGTGGGCTCAAACAGCGCCTTTGCTGCTTTTCTCTGCTCCTGTCAGGTCTCCTGGGGA  
TGGTGGCCACATGATGTATTACAAGTCTTCCAAGCGACTGTCAACTGGGTCCAGAAGACTGGAGACC  
ACATGTTTGAATTATGGCTGGGCTTCTACATGGCCTGGCTCTCCTTACCTGCTGCATGGCGTCGGCT  
GTCACCACCTTCAACACGTACACCAGGATGGTGTGGAGTTCAAGTGCAAGCA

**ACGCGT**ACGCGGCCGCTCGAGCAGAAACTCATCTCAGAAGAGGATCTGGCAGCAAATGATATCCTGGATT  
ACAAGGATGACGACGATAAGGTTTAA



[View online »](#)

**Protein Sequence:** >RC211591 representing NM\_001080554  
Red=Cloning site Green=Tags(s)

MSDPSQLTQNVCLTQEMELSKAFSGQRTLLSAILSMLSLSFSTTSLLSNYWFVGTQKVPKPLCEKGLAAK  
 CFDMPVSLDGDNTSTQEVVQYNWETGDDRF SFRSFRSGMWLSCEETVEEPALLHPQSWKQFRALRSSGT  
 AAAKGERCRSFIELTPPAKRGEKGLLEFATLQGPCHPTLRFGGKRLMEKASLPSPLGLCGKNPMVIPGN  
 ADHLHRTSIHQLPATNRLATHWEPCLWAQTERLCCCFLCPVRSFGDGGPHDVF TSLPDCQLGSRRLLET  
 TCLELWLG LLLHGLALLHLLHGVGCHHLQHVVHQDGAGVQVQA

TRTRPLEQKLISEEDLAANDILDYKDDDDKV

**Chromatograms:** [https://cdn.origene.com/chromatograms/mk8051\\_g04.zip](https://cdn.origene.com/chromatograms/mk8051_g04.zip)

**Restriction Sites:** SgfI-MluI

**Cloning Scheme:**

Cloning sites used for ORF Shuttling:



\* The last codon before the Stop codon of the ORF

**ACCN:** NM\_001080554

**ORF Size:** 963 bp

**OTI Disclaimer:** The molecular sequence of this clone aligns with the gene accession number as a point of reference only. However, individual transcript sequences of the same gene can differ through naturally occurring variations (e.g. polymorphisms), each with its own valid existence. This clone is substantially in agreement with the reference, but a complete review of all prevailing variants is recommended prior to use. [More info](#)

**OTI Annotation:** This clone was engineered to express the complete ORF with an expression tag. Expression varies depending on the nature of the gene.

**Components:** The ORF clone is ion-exchange column purified and shipped in a 2D barcoded Matrix tube containing 10ug of transfection-ready, dried plasmid DNA (reconstitute with 100 ul of water).

**Reconstitution Method:**

1. Centrifuge at 5,000xg for 5min.
2. Carefully open the tube and add 100ul of sterile water to dissolve the DNA.
3. Close the tube and incubate for 10 minutes at room temperature.
4. Briefly vortex the tube and then do a quick spin (less than 5000xg) to concentrate the liquid at the bottom.
5. Store the suspended plasmid at -20°C. The DNA is stable for at least one year from date of shipping when stored at -20°C.

**RefSeq:** [NM\\_001080554.4](#)

**RefSeq Size:** 2179 bp

**RefSeq ORF:** 966 bp

**Locus ID:** 83445

**UniProt ID:** [Q2KHT4](#)

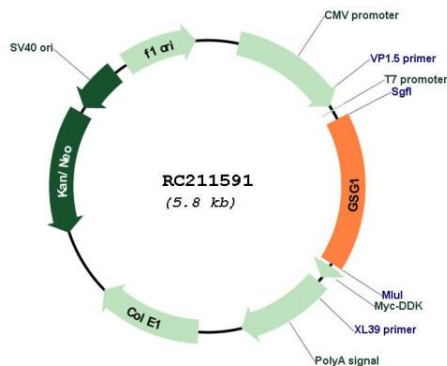
**Cytogenetics:** 12p13.1

**Protein Families:** Transmembrane

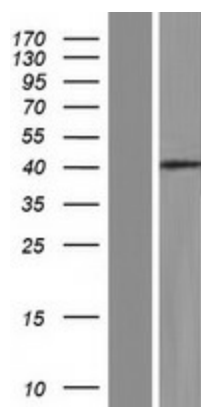
**MW:** 35.2 kDa

**Gene Summary:** May cause the redistribution of PAPOLB from the cytosol to the endoplasmic reticulum. [UniProtKB/Swiss-Prot Function]

**Product images:**



Circular map for RC211591



Western blot validation of overexpression lysate (Cat# [LY421103]) using anti-DDK antibody (Cat# [TA50011-100]). Left: Cell lysates from untransfected HEK293T cells; Right: Cell lysates from HEK293T cells transfected with RC211591 using transfection reagent MegaTran 2.0 (Cat# [TT210002]).