

Product datasheet for RC211583

SH2D5 (NM_001103161) Human Tagged ORF Clone

Product data:

Product Type:	Expression Plasmids
Product Name:	SH2D5 (NM_001103161) Human Tagged ORF Clone
Tag:	Myc-DDK
Symbol:	SH2D5
Mammalian Cell Selection:	Neomycin
Vector:	pCMV6-Entry (PS100001)
E. coli Selection:	Kanamycin (25 ug/mL)
ORF Nucleotide Sequence:	>RC211583 representing NM_001103161 Red=Cloning site Blue=ORF Green=Tags(s)

TTTTGTAATACGACTCACTATAGGGCGGCCGGAATTCGTCGACTGGATCCGGTACCGAGGAGATCTGCCGCC**CGATCGCC**

ATGCAGAAGGCGGGGCTGGGGCCGAGGCCTCTGACTGCGGGCTGGCCCTCACCGGCCAGGTGCA
TCACCAAGTTGCCAGTACGTGGGCTCCTCCCTGTGGATGACCTGGACACCCAGGAGAGCGTGTGGCT
GGTGCAGCAGCAGCTGTGGGCGCTGAAGGACTGTCCCGACGCCGGGCGTCATCCTGAAATTCAGCCTT
CAGGGTCTCAAGATCTACAGCGGGGAGGGTGAAGTGTCTGCTGATGGCTCATGCCCTGAGGCGCATACTCT
ACTCCACTGGTGCCCTGCCACTGCCAGTTTGCCTTCATGGCTCGAAACCCACGGAGCCAGCCAGCAGCAA
GCTCTTCTGCCACCTCTTTGTGGGCAGCCAGCCAGGAGAGGTCCAGATCCTGCACCTGCTGCTGTGCCGC
TCTTCCAGCTGGCTTACCTCTTGCAGCACCTGAGGAGCGGGCACAGCCAGAGCCTGCCAGGGCCCA
CAGGGGAGGTGCCCTGAAGCCACTGTCCAGCTCTGGGGCCTGGTGCAGGAGCCCTTCGGCCGTGATCA
GCTCTCTCAGAACGTCCATGCCCTGGTCTCCTTTCGGCGGCTGCCAGCAGAGGGGCTGGTGGCAGTGGG
AAGGAGCTGCCAGAGTCGGAAGGCCGTGCCGCCATGCCGCCTGGGGAATCCCTACTGCTGCCACGC
TGGTGCACAAGAAGGCCATTTCAGCAAGGTGATCCGCTCGGGGCTACCGCGGCTGCACCTATGAGAC
CCAGCTGCAGCTGTGGCTCGGAGGCCCTTCTGCCGATGGGAGGCATGGCCCCGGGGTCTGGTGGC
CACTCGTGCCTGGTGGAGAGCGAGGGCAGCCTGACGGAGAATCTGGGCCTTCGCTGGCATCTCCAGGC
CCTGTGCCCTGGCCCTGTTCGGAGAGAGCTGTGGGGGCTTCTGCTGTGGCCTGAGCTGGGTGCTAG
CGCCAGTGGTGTCTGTCCGTGCCACGCAGTGGCGCTGGTGGCCACCAGGTCTTCGGAAACCCTG
GGCCGCTACTGCTTGAGCACCTGCCGGCAGAGTCCCGAGCCTGGAGGCTCTGGTGGAGAACCACGCGG
TTACTGAACGTAGCCTCTTGTCCCCTCGACATGGGCCGCTGAACCCACCTACGAGGAGCAGGACTG
TGGGCCCCAGGCAGGCCGCCCGGACTCTCCGGCCCTCAGCCATGCCAAGTCCGAGGCAGAGCTGCAG
GGCCTGGGC

ACGCGTACGCGGCCGCTCGAGCAGAACTCATCTCAGAAGAGGATCTGGCAGCAAATGATATCCTGGATT
ACAAGGATGACGACGATAAGGTTTAA



[View online »](#)

Protein Sequence: >RC211583 representing NM_001103161
Red=Cloning site Green=Tags(s)

MQKAGAGRRASDCGLAPHRPRCITKFAQYVGSFVDDLDLTQESVWL VQQQLWALKDCPRRRAVILKFSL
 QGLKIYSGEGEVLLMAHALRRI LYSTWCPADCQFAFMARNPRSPASKLFCHLFVGSQPGEVQILHLLLCR
 SFQLAYLLQHPEERAQPEPCPGPTGEVPLKPLSSSGGLVREPFGRDQLSQNVHALVSFRRLPAEGLVGS
 KELPESEGRARHARLGNPYCSP TLVRKKAIRSKVIRSGAYRGCTYETQLQLSAREAFPAWEAWPRGPGG
 HSCLVESEGLTENIWAFAGISRPCALALLRRDVLGAFLLWPELGASGQWCLSVRTQCGVVP HQVFRNHL
 GRYCLEHLPAEFPSLEALVENHAVTERSLFCPLDMGR LNPTYEEQDCGPPGRPPRTLRLPLSHAKSEAE LQ
 GLG

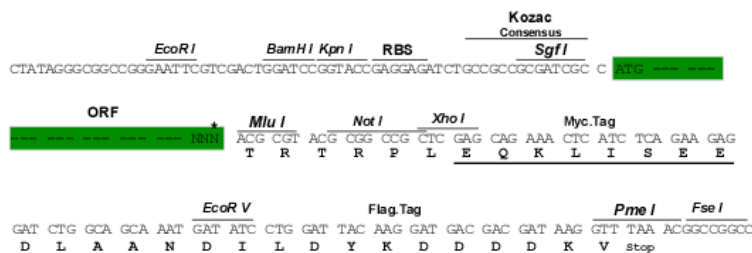
TRTRPLEEQKLISEEDLAANDILDYKDDDDKV

Chromatograms: https://cdn.origene.com/chromatograms/mk8025_a06.zip

Restriction Sites: SgfI-MluI

Cloning Scheme:

Cloning sites used for ORF Shuttling:



* The last codon before the Stop codon of the ORF

ACCN: NM_001103161

ORF Size: 1269 bp

OTI Disclaimer: The molecular sequence of this clone aligns with the gene accession number as a point of reference only. However, individual transcript sequences of the same gene can differ through naturally occurring variations (e.g. polymorphisms), each with its own valid existence. This clone is substantially in agreement with the reference, but a complete review of all prevailing variants is recommended prior to use. [More info](#)

OTI Annotation: This clone was engineered to express the complete ORF with an expression tag. Expression varies depending on the nature of the gene.

Components: The ORF clone is ion-exchange column purified and shipped in a 2D barcoded Matrix tube containing 10ug of transfection-ready, dried plasmid DNA (reconstitute with 100 ul of water).

Reconstitution Method:

1. Centrifuge at 5,000xg for 5min.
2. Carefully open the tube and add 100ul of sterile water to dissolve the DNA.
3. Close the tube and incubate for 10 minutes at room temperature.
4. Briefly vortex the tube and then do a quick spin (less than 5000xg) to concentrate the liquid at the bottom.
5. Store the suspended plasmid at -20°C. The DNA is stable for at least one year from date of shipping when stored at -20°C.

RefSeq: [NM_001103161.2](#)

RefSeq Size: 3834 bp

RefSeq ORF: 1272 bp

Locus ID: 400745

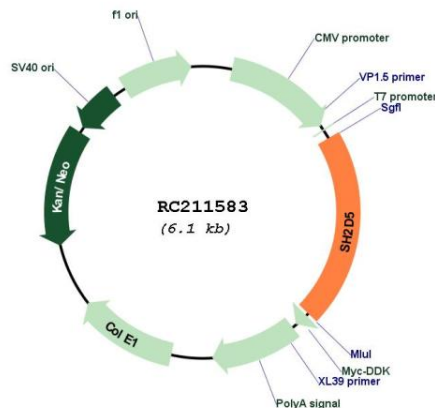
UniProt ID: [Q6ZV89](#)

Cytogenetics: 1p36.12

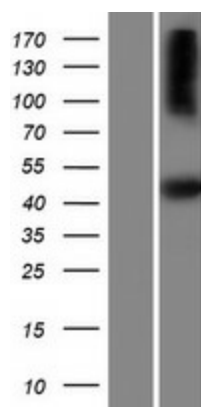
MW: 46.6 kDa

Gene Summary: May be involved in synaptic plasticity regulation through the control of Rac-GTP levels. [UniProtKB/Swiss-Prot Function]

Product images:



Circular map for RC211583



Western blot validation of overexpression lysate (Cat# [LY420198]) using anti-DDK antibody (Cat# [TA50011-100]). Left: Cell lysates from untransfected HEK293T cells; Right: Cell lysates from HEK293T cells transfected with RC211583 using transfection reagent MegaTran 2.0 (Cat# [TT210002]).