

Product datasheet for **RC211582**

BTK (NM_000061) Human Tagged ORF Clone

Product data:

Product Type:	Expression Plasmids
Product Name:	BTK (NM_000061) Human Tagged ORF Clone
Tag:	Myc-DDK
Symbol:	BTK
Synonyms:	AGMX1; AT; ATK; BPK; IGHD3; IMD1; PSCTK1; XLA
Mammalian Cell Selection:	Neomycin
Vector:	pCMV6-Entry (PS100001)
E. coli Selection:	Kanamycin (25 ug/mL)



[View online »](#)

**ORF Nucleotide
Sequence:**

>RC211582 representing NM_000061
 Red=Cloning site Blue=ORF Green=Tags(s)

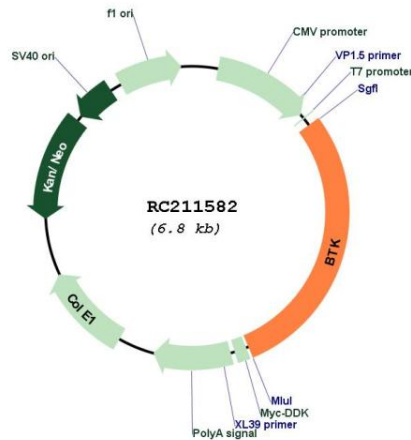
TTTTGTAATACGACTCACTATAGGGCGGCCGGAATTCGTCGACTGGATCCGGTACCGAGGAGATCTGCC
 GCC**CGGATCGCC**

ATGGCCGCAGTGATTCTGGAGAGCATCTTTCTGAAGCGATCCCAACAGAAAAAGAAAACATCACCTCTAA
 ACTTCAAGAAGCGCCTGTTTCTCTTGACCGTGCACAACTCTCCTACTATGAGTATGACTTTGAAGTGG
 GAGAAGAGGCAGTAAGAAGGTTCAATAGATGTTGAGAAGATCACTTGTGTTGAAACAGTGGTTCCTGAA
 AAAATCTCCTCCAGAAAGACAGATTCGAGAAGAGGTGAAGAGTCCAGTGAATGGAGCAAATTTCAA
 TCATTGAAAGGTTCCCTTATCCCTTCCAGGTTGTATATGATGAAGGCGCTCTCTACGTCTTCTCCCAAC
 TGAAGAACTAAGGAAGCGGTGGATTCCACAGCTCAAAAACGTAATCCGGTACAACAGTGTCTGGTTCAG
 AAATATCACCTTGCTTCTGGATCGATGGGCAGTATCTCTGCTGCTCAGACAGCCAAAAATGCTATGG
 GCTGCCAAATTTGGAGAACAGGAATGGAAGCTTAAAACCTGGGAGTTCTCACCGGAAGACAAAAAGCC
 TCTTCCCAACGCCTGAGGAGGACCAGATCTTAAAAAGCCACTACCGCCTGAGCCAGCAGCAGCACCA
 GTCTCCACAAGTGAAGTAAAAAGGTTGTGGCCCTTTATGATTACATGCCAATGAATGCAATGATCTAC
 AGCTGCGGAAGGGTGATGAATTTTTATCTTGGAGGAAAGCAACTTACCATGGTGGAGAGCACGAGATAA
 AAATGGGCAGGAAGGCTACATTCCTAGTAACTATGTCACTGAAGCAGAAGACTCCATAGAAATGTATGAG
 TGGTATTCCAAACACATGACTCGGAGTCAGGCTGAGCAACTGCTAAAGCAAGAGGGGAAAGAAGGAGGTT
 TCATTGTCAGAGACTCCAGCAAAGCTGGCAAATATACAGTGTCTGTGTTGCTAAATCCACAGGGGACCC
 TCAAGGGGTGATACGTCAATATGTTGTGTGTTCCACACCTCAGAGCCAGTATTACCTGGCTGAGAAGCAC
 CTTTTCAGCACCATCCCTGAGCTCATTAACTACCATCAGCACAACCTCTGCAGGACTCATATCCAGGCTCA
 AATATCCAGTGTCTCAACAAAAACAAGAATGCACCTTCCACTGCAGGCCTGGGATACGGATCATGGGAAAT
 TGATCCAAAGGACCTGACCTTCTTGAAGGAGCTGGGGACTGGACAATTTGGGGTAGTGAAGTATGGGAAA
 TGGAGAGGCCAGTACGACGTGGCCATCAAGATGATCAAAGAAGGCTCCATGTCTGAAGATGAATTCATTG
 AAGAAGCCAAAGTCATGATGAATCTTCCCATGAGAAGCTGGTGCAGTTGTATGGCGTCTGCACCAAGCA
 GCGCCCCATCTTCATCATCACTGAGTACATGGCCAATGGCTGCCTCCTGAACTACCTGAGGGAGATGCGC
 CACCGCTTCCAGACTCAGCAGCTGCTAGAGATGTGCAAGGATGTCTGTGAAGCCATGGAATACCTGGAGT
 CAAAGCAGTTCCTTCCAGGACCTGGCAGCTCGAACTGTTTGGTAAACGATCAAGGAGTTGTTAAAGT
 ATCTGATTTCCGCTGTCCAGGTATGCTCCTGGATGATGAATACACAAGCTCAGTAGGCTCCAAATTTCCA
 GTCGGTGGTCCCACCGAAGTCTGTATAGCAAGTTCAGCAGCAAATCTGACATTTGGGCTTTTG
 GGGTTTTGATGTGGGAAATTTACTCCCTGGGGAAGATGCCATATGAGAGATTTACTAACAGTGAAGTGC
 TGAACACATTGCCAAGGCTACGTCTCTACAGGCTCATCTGGCTTCCAGAGAAGGTATATACCATCATG
 TACAGTTGCTGGCATGAGAAAGCAGATGAGCGTCCCACCTTCAAATTTCTCTGAGCAATATTCTAGATG
 TCATGGATGAAGAATCC

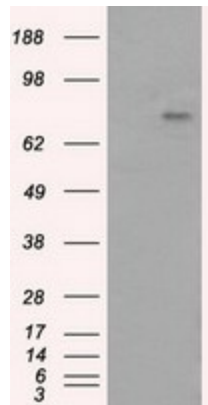
ACGCGTACGCGGCCGCTCGAGCAGAACTCATCTCAGAAGAGGATCTGGCAGCAAATGATATCCTGGATT
 ACAAGGATGACGACGATAAGGTTTAA

Reconstitution Method:	<ol style="list-style-type: none">1. Centrifuge at 5,000xg for 5min.2. Carefully open the tube and add 100ul of sterile water to dissolve the DNA.3. Close the tube and incubate for 10 minutes at room temperature.4. Briefly vortex the tube and then do a quick spin (less than 5000xg) to concentrate the liquid at the bottom.5. Store the suspended plasmid at -20°C. The DNA is stable for at least one year from date of shipping when stored at -20°C.
Note:	Plasmids are not sterile. For experiments where strict sterility is required, filtration with 0.22um filter is required.
RefSeq:	NM_000061.3
RefSeq Size:	2591 bp
RefSeq ORF:	1980 bp
Locus ID:	695
UniProt ID:	Q06187
Cytogenetics:	Xq22.1
Domains:	pkinase, SH2, TyrKc, SH3, BTK, PH, S_TKc
Protein Families:	Druggable Genome, Protein Kinase
Protein Pathways:	B cell receptor signaling pathway, Fc epsilon RI signaling pathway, Primary immunodeficiency
MW:	76.1 kDa
Gene Summary:	The protein encoded by this gene plays a crucial role in B-cell development. Mutations in this gene cause X-linked agammaglobulinemia type 1, which is an immunodeficiency characterized by the failure to produce mature B lymphocytes, and associated with a failure of Ig heavy chain rearrangement. Alternative splicing results in multiple transcript variants encoding different isoforms. [provided by RefSeq, Dec 2013]

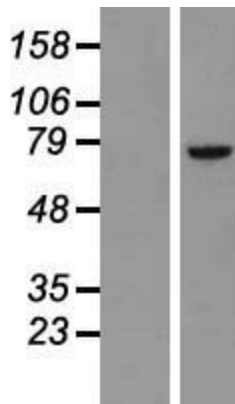
Product images:



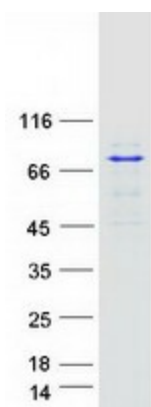
Circular map for RC211582



HEK293T cells were transfected with the pCMV6-ENTRY control (Cat# [PS100001], Left lane) or pCMV6-ENTRY BTK (Cat# RC211582, Right lane) cDNA for 48 hrs and lysed. Equivalent amounts of cell lysates (5 ug per lane) were separated by SDS-PAGE and immunoblotted with anti-BTK (Cat# [TA501094]). Positive lysates [LY424947] (100ug) and [LC424947] (20ug) can be purchased separately from OriGene.



Western blot validation of overexpression lysate (Cat# [LY424947]) using anti-DDK antibody (Cat# [TA50011-100]). Left: Cell lysates from untransfected HEK293T cells; Right: Cell lysates from HEK293T cells transfected with RC211582 using transfection reagent MegaTran 2.0 (Cat# [TT210002]).



Coomassie blue staining of purified BTK protein (Cat# [TP311582]). The protein was produced from HEK293T cells transfected with BTK cDNA clone (Cat# RC211582) using MegaTran 2.0 (Cat# [TT210002]).