

Product datasheet for **RC211571**

ARHGAP36 (NM_144967) Human Tagged ORF Clone

Product data:

Product Type:	Expression Plasmids
Product Name:	ARHGAP36 (NM_144967) Human Tagged ORF Clone
Tag:	Myc-DDK
Symbol:	ARHGAP36
Mammalian Cell Selection:	Neomycin
Vector:	pCMV6-Entry (PS100001)
E. coli Selection:	Kanamycin (25 ug/mL)



[View online »](#)

ORF Nucleotide Sequence:

>RC211571 representing NM_144967
 Red=Cloning site Blue=ORF Green=Tags(s)

TTTTGTAATACGACTCACTATAGGGCGGCCGGAATTCGTCGACTGGATCCGGTACCGAGGAGATCTGCC
 GCC**CGCATCGCC**

ATGGGTGGCTGCATTCTTTTCTGAAGGCAGCAAGGGCACTGTGCCCCAGAATCATGCCCCCTTTGCTGT
 TGTGTCCGCCTTCATTTTTTAGTGAGTGTCTGGGAGGAGCCCAAGACACAACCCCGACCGCAGGAC
 GAAGATGGTATCGATACACAGCCTCTCTGAGCTGGAGCGTCTGAAGCTGCAAGAGACTGCTTACCACGAA
 CTCGTGGCCAGACATTTCTGTCCGAATCAAACCTGACAGAGCTCTGCCTATTGACCGTCCGAACACCT
 TGGATAAGTGGTTCTGATTTTGGAGAGGACAGCAGAGGGCTGTATCACACAAGACATTTGGCATTAGCCT
 GGAAGAGGTCTGGTGAACGAGTTTACCCGCCGAAGCATCTTGAAGTACAGCCACGATGCAGGTTGAA
 GAAGCCACCGGTCAAGCTGCGGGCCGTCGTCGGGAAACGTGGTGCAGAGGTTGTTGGCCGCATCCGGC
 GCTTTTTAGTGCAGGGGAATGAGCCACCTTGCCCCGGGAGTTCACCTCGCCGTGGCGTCGAGGTGC
 AGTGTCTGTGGATAGTCTGGCTGAGCTGGAAGACGGAGCCCTGCTGCTGCAGACCCTGCAGCTTTCAAAA
 ATTTCTTTCCAATTGGCCAACGACTTCTGGGATCCAAAAGGAAGATGAGTCTCAATCCGATTGCGAAAC
 AAATCCCCAGGTTGTTGAGGCTTGTGCAATTCATTGAAAAACATGGCTTAAGCGCAGTGGGGATTTT
 TACCCTTGAATACTCCGTGCAGCGAGTGCCTGAGTCCGTGAAGAATTTGATCAAGGTCTGGATGTAGTG
 CTGGATGACAAATCAGAATGTGCATGATGTGGTGCAGTCCCAAGGAGTTTTCCGTGACATGAAGGATT
 CTCTGCTGCCAGATGATCTGTACATGTCATTCTCTGACAGCAACTTAAAGCCCCAGGATCAGCTTTC
 TGCCCTGCAGTTGCTGGTCTACCTGATGCCACCCTGCCACAGTGATACCTGGAGCGTCTGCTGAAGGCC
 CTGCATAAAATCACTGAGAACTGCGAGGACTCAATTGGCATTGATGGACAGTTGGTCCCAGGCAACCGTA
 TGACTTCCACTAACTTGGCCTTGGTGTGGTCTGCTCTCTGAAAAAAGGAAAGTTTGGCAAGAGAGA
 GTCCAGGAAAACAAGCTGGGGATTGATCACTATGTTGCTTCTGTCAATGTGGTCCGTGCCATGATAGAT
 AACTGGGATGTCTCTTCCAGGTGCCTCCCATATTCAGAGGCAGGTTGCTAAGCGCGTGTGGAAGTCCA
 GCCCGGAAGCACTTGATTTTATCAGACGCAGGAACCTGAGGAAGATCCAGAGTGCACGCATAAAGATGGA
 AGAGGATGCACTACTTTCTGATCCAGTGGAAACCTCTGCTGAAGCCCGGGCTGCTGCTCTTCTCAAAGC
 AAGCCTTCTGATGAAGGTTCTCTGAGGAGCCAGCTGTGCTTCCGGCACTGCCCGTTCCCATGACGATG
 AGGAAGGAGCGGTAACCCTCCATTCCGGAGCAAGACCGCCATTGCTCCGTGTGCCCGGGAGAAGGA
 GGCCAAAACCTGGCGTCAGCTACTTCTTCT

ACGCGTACGCGGCCGCTCGAGCAGAACTCATCTCAGAAGAGGATCTGGCAGCAAATGATATCCTGGATT
 ACAAGGATGACGACGATAAGGTTTAA

Protein Sequence:

>RC211571 representing NM_144967
 Red=Cloning site Green=Tags(s)

MGGCIPFLKAARALCPRIIMPPLLLLSAFIFLVSVLGGAPGHNPDRRTKMVSIHLSSELERLKLQETAYHE
 LVARHFLSEFKPDRALPIDRPNTLDKWFLILRGQRAVSHKTFGISLEEVLVNEFTRRKHLELTATMQVE
 EATGQAAGRRRGNVRRVFGRIIRRFSSRRRNEPTLPREFTRRRRRGAVSVDSLAELEDGALLQLQLSK
 ISFPIGQRLGSKRKMNSLPIAKQIPQVVEACCFIEKHGLSAVGIFTLEYSVQVRVQLREEFDQGLDVV
 LDDNQNVHDVAALLKEFFRDMKDSLLPDDL YMSFLLTATLKPQDQLSALQLLVYLMPPCHSDTLERLLKA
 LHKITENCEDSIGIDGQLVPGNRMTSTNLALVFGSALLKKGKFGKRESRKTGLGIDHYVASVNVVRAMID
 NWDVLFQVPPHIQRQVAKRVWKSPEALDFIRRRNLRKIQSARIKMEEDALLSDPVETSAEARAAVLAQS
 KPSDEGSSEEPVPSGTARSHDDEEGAGNPPIQDRPILLRVPREKEAKTGVSYFFP

TRTRPLEQKLISEEDLAANDILDYKDDDDKV

Chromatograms:

https://cdn.origene.com/chromatograms/mg4149_c05.zip

Restriction Sites:

Sgfl-Mlul

Cloning Scheme:


ACCN: NM_144967

ORF Size: 1641 bp

OTI Disclaimer: The molecular sequence of this clone aligns with the gene accession number as a point of reference only. However, individual transcript sequences of the same gene can differ through naturally occurring variations (e.g. polymorphisms), each with its own valid existence. This clone is substantially in agreement with the reference, but a complete review of all prevailing variants is recommended prior to use. [More info](#)

OTI Annotation: This clone was engineered to express the complete ORF with an expression tag. Expression varies depending on the nature of the gene.

Components: The ORF clone is ion-exchange column purified and shipped in a 2D barcoded Matrix tube containing 10ug of transfection-ready, dried plasmid DNA (reconstitute with 100 ul of water).

- Reconstitution Method:**
1. Centrifuge at 5,000xg for 5min.
 2. Carefully open the tube and add 100ul of sterile water to dissolve the DNA.
 3. Close the tube and incubate for 10 minutes at room temperature.
 4. Briefly vortex the tube and then do a quick spin (less than 5000xg) to concentrate the liquid at the bottom.
 5. Store the suspended plasmid at -20°C. The DNA is stable for at least one year from date of shipping when stored at -20°C.

RefSeq: [NM_144967.2](#), [NP_659404.2](#)

RefSeq Size: 3082 bp

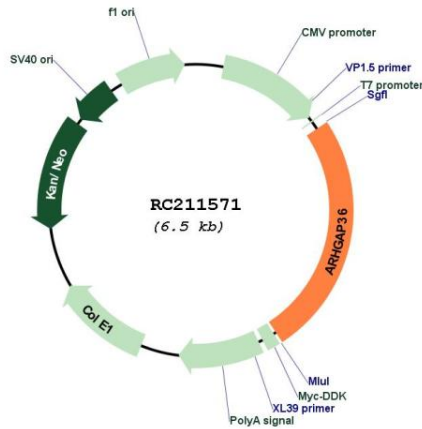
RefSeq ORF: 1644 bp

Locus ID: 158763

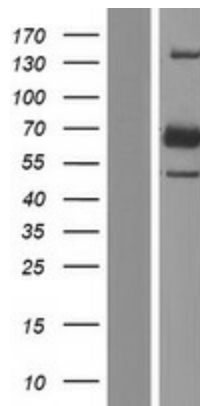
UniProt ID: [Q6ZRI8](#)

Cytogenetics: Xq26.1
Domains: RhoGAP
Protein Families: Transmembrane
MW: 61.5 kDa
Gene Summary: GTPase activator for the Rho-type GTPases by converting them to an inactive GDP-bound state.[UniProtKB/Swiss-Prot Function]

Product images:



Circular map for RC211571



Western blot validation of overexpression lysate (Cat# [LY408076]) using anti-DDK antibody (Cat# [TA50011-100]). Left: Cell lysates from untransfected HEK293T cells; Right: Cell lysates from HEK293T cells transfected with RC211571 using transfection reagent MegaTran 2.0 (Cat# [TT210002]).