

Product datasheet for RC211569

CPLX4 (NM_181654) Human Tagged ORF Clone

Product data:

Product Type:	Expression Plasmids
Product Name:	CPLX4 (NM_181654) Human Tagged ORF Clone
Tag:	Myc-DDK
Symbol:	CPLX4
Synonyms:	CPX-IV; CPXIV
Mammalian Cell Selection:	Neomycin
Vector:	pCMV6-Entry (PS100001)
E. coli Selection:	Kanamycin (25 ug/mL)
ORF Nucleotide Sequence:	>RC211569 ORF sequence Red=Cloning site Blue=ORF Green=Tags(s)

TTTTGTAATACGACTCACTATAGGGCGGCCGGAATTCGTCGACTGGATCCGGTACCGAGGAGATCTGCC
 GCCCGCATCGCC

ATGGCTTTCCTTATGAAAAGTATGATAAGTAACCAAGTAAAGAATTTAGGATTTGGTGGTGGTCTGAAG
 AAAATAAAGAAGAAGGAGGTGCATCTGATCCTGCAGCAGCTCAAGGGATGACTAGAGAGGAGTATGAGGA
 GTATCAAAAGCAAATGATTGAGGAGAAGATGGAAGAGATGCTGCATTTACACAGAAAAAGGCAGAAAGG
 GCATGCCTCAGAGTTCATCTCAGAGAAAAATACAGGCTCCCAAAGAGTGAATGGATGAGAATCAAATCC
 AGATGGCTGGAGATGATGTGGATTTACCTGAAGATCTCCGAAAAATGGTAGATGAAGATCAAGAAGAGGA
 AGAAGATAAAGATTCTATTCTTGGGCAGATACAGAATCTCCAGAACATGGACTTGGATACCATAAAAGAA
 AAAGCCCAGGCCACCTTCACTGAAATCAAGCAGACAGCGAGCAGAAGTGTCCGTGATG

ACGCGTACGCGGCCGCTCGAGCAGAACTCATCTCAGAAGAGGATCTGGCAGCAAATGATATCCTGGATT
 ACAAGGATGACGACGATAAGGTTTAA

Protein Sequence:	>RC211569 protein sequence Red=Cloning site Green=Tags(s)
-------------------	--

MAFLMKSMISNQVKNLGFGGSEENKEEGGASDPAAAQGMTRREEYEEYQKQMIEEKMERDAAFTQKKAER
 ACLRVHLREKYRLPKSEMDENQIQMAGDDVDLPEDLRKMVDEDEQEEEDKDSILGQIQNLQNMDLTIKE
 KAQATFTTEIKQTAEQKCSVM

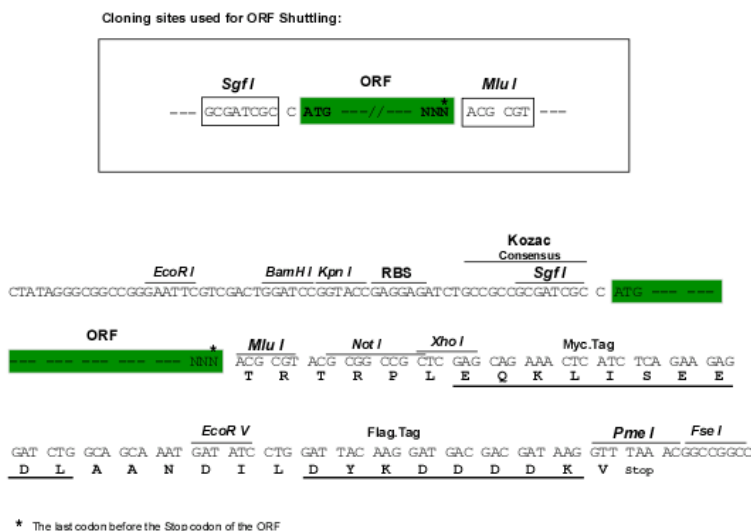
TRTRPLEQKLISEEDLAANDILDYKDDDDKV

Chromatograms:	https://cdn.origene.com/chromatograms/mk6457_g12.zip
----------------	---


[View online »](#)

Restriction Sites: Sgfl-MluI

Cloning Scheme:



ACCN: NM_181654

ORF Size: 480 bp

OTI Disclaimer: The molecular sequence of this clone aligns with the gene accession number as a point of reference only. However, individual transcript sequences of the same gene can differ through naturally occurring variations (e.g. polymorphisms), each with its own valid existence. This clone is substantially in agreement with the reference, but a complete review of all prevailing variants is recommended prior to use. [More info](#)

OTI Annotation: This clone was engineered to express the complete ORF with an expression tag. Expression varies depending on the nature of the gene.

Components: The ORF clone is ion-exchange column purified and shipped in a 2D barcoded Matrix tube containing 10ug of transfection-ready, dried plasmid DNA (reconstitute with 100 ul of water).

Reconstitution Method:

1. Centrifuge at 5,000xg for 5min.
2. Carefully open the tube and add 100ul of sterile water to dissolve the DNA.
3. Close the tube and incubate for 10 minutes at room temperature.
4. Briefly vortex the tube and then do a quick spin (less than 5000xg) to concentrate the liquid at the bottom.
5. Store the suspended plasmid at -20°C. The DNA is stable for at least one year from date of shipping when stored at -20°C.

RefSeq: [NM_181654.4](#)

RefSeq Size: 1980 bp

RefSeq ORF: 483 bp

Locus ID: 339302

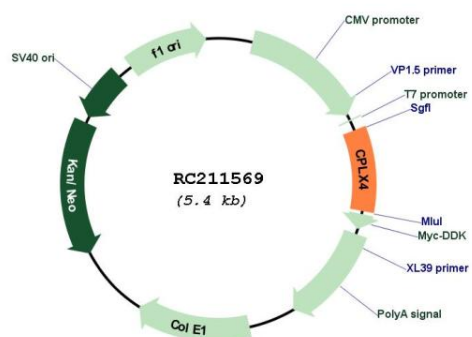
UniProt ID: [Q7Z7G2](#)

Cytogenetics: 18q21.32

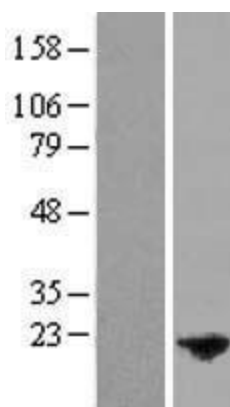
MW: 18.3 kDa

Gene Summary: This gene likely encodes a member of the complexin family. The encoded protein may be involved in synaptic vesicle exocytosis. [provided by RefSeq, Jan 2009]

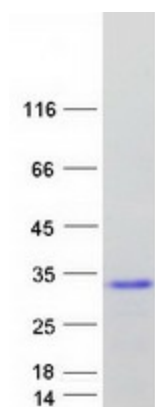
Product images:



Circular map for RC211569



Western blot validation of overexpression lysate (Cat# [LY405742]) using anti-DDK antibody (Cat# [TA50011-100]). Left: Cell lysates from untransfected HEK293T cells; Right: Cell lysates from HEK293T cells transfected with RC211569 using transfection reagent MegaTran 2.0 (Cat# [TT210002]).



Coomassie blue staining of purified CPLX4 protein (Cat# [TP311569]). The protein was produced from HEK293T cells transfected with CPLX4 cDNA clone (Cat# RC211569) using MegaTran 2.0 (Cat# [TT210002]).