

Product datasheet for **RC211560**

TOX2 (NM_001098796) Human Tagged ORF Clone

Product data:

Product Type:	Expression Plasmids
Product Name:	TOX2 (NM_001098796) Human Tagged ORF Clone
Tag:	Myc-DDK
Symbol:	TOX2
Synonyms:	C20orf100; dj495O3.1; dj1108D11.2; GCX-1; GCX1
Mammalian Cell Selection:	Neomycin
Vector:	pCMV6-Entry (PS100001)
E. coli Selection:	Kanamycin (25 ug/mL)



[View online »](#)

ORF Nucleotide Sequence:

>RC211560 representing NM_001098796
 Red=Cloning site Blue=ORF Green=Tags(s)

TTTTGTAATACGACTCACTATAGGGCGGCCGGAATTCGTCGACTGGATCCGGTACCGAGGAGATCTGCC
 GCC**GCGATCGCC**

ATGAGTGACGAAACCCAGAGCTCTGTCAACCAGCCAGACCTACAACGGCCAGAGCGAGAACAACGAAG
 ACTATGAGATCCCCCGATAAACCTCCCAACCTCCCGGAGCCATCCCTCCTGCACCTGGGGACCACGA
 AGCCAGCTACCACTCGTGTGCCACGGCTCACCCCCAACGGTCTGCTCCCTGCCTACTCTATCAGGCC
 ATGGACCTCCCAGCCATCATGGTGTCCAACATGCTAGCACAGGACAGCCACCTGTGTGGGCCAGCTGC
 CCACGATCCAGGAGATGGTCCACTCGGAAGTGGCTGCCTATGACTCGGGCCGGCCGGGCCCTGTGGG
 TCGCCCGCAATGCTGGCCAGCCACATGAGTGCCTCAGCCAGTCCAGCTCATCTGCAGATGGGCATC
 CGGAGCAGCATCGCCACAGCTCCCATCACCGCCGGGAGCAAGTCAGCGACCCCTCTCCCTCCAGCT
 CCACTCAGGAAGAGGAGTCGGAAGTGCATTTCAAGATCTCGGGAGAAAAGAGACCTTCAGCCGCCAGG
 AAAAAAGCCAAGAACCAGGAAGAAGAAAAAGAAAGACCCCAATGAGCCGAGAACCTGTGTGGCC
 TACGCACTCTTTCAGAGACACTCAGGCGCCATCAAGGGTCAAGCCAGTCCACTTTCGGTGACG
 TGTCAAAATCGTGGCCTCCATGTGGGACAGCCTGGGAGAGGAACAGAAGCAGGCCTACAAGAGGAAGAC
 AGAAGCAGCAAAGAAGGAATATCTGAAGGCCCTGGCAGCCTACCGGGCTAGCCTCGTCTCCAAGAGCTCC
 CCAGATCAAGGTGAGACCAAGAGCACTCAGGCAAACCCACCAGCCAAAATGCTCCACCCAAGCAGCCCA
 TGTATGCCATGCCAGGCCTGGCTCCTTCTGACGCCGTGGACCTGCAGGCCTCCGCAGTGGGGCCTC
 CCCTGCCAGCCTCGCCGGACGCTGGGCTCCAAGTCTCTGCTGCCAGGCCTCAGTGGTCCCCGCCGCC
 CCACCTCCTTCCCGCTCAGCCCCACACTGCACCAGCAGCTGTACTGCCCCCTCAGCCAGGGCGCCC
 TCCTCAGTCCACCTGTTAGCATGTCCCCAGCCCCCAGCCCCCTGTCTGCCACCCCAATGGCATTCCA
 GGTGCAGCTGGCGATGAGCCCCCTCACCTCAGGGCCACAGGACTTCCCGCACATCTCTGAGTTCCCCAGC
 AGCTCGGGATCCTGCTACCTGGCCATCCAACCCACCAGCAGCGGGACTGGGACAGCAGCTACCCCA
 GTGGGGAGTGTGCATCAGCACCTGCAGCCTGCTCCCCAGGGACAATCGCTCTACCTCAC

ACGCGTACGCGGCCGCTCGAGCAGAAACTCATCTCAGAAGAGGATCTGGCAGCAAATGATATCCTGGATT
 ACAAGGATGACGACGATAAGGTTTAA

Protein Sequence:

>RC211560 representing NM_001098796
 Red=Cloning site Green=Tags(s)

MSDGNPELLSTSQTYNGQSENNEDYEIPPIITPPNLPEPSLLHLGDHEASYHSLCHGLTPNGLLPAYSQQA
 MDLPAIMVSNMLAQDShLLSGQLPTIQEMVHSEVAAYDSGRPGPLLGRPAMLASHMSALSQSQLISQMG
 RSSIAHSSPSPGSKSATPSPSSSTQEESEVHFKISGEKRPSADPGKKAKNPKKKKKDPNEPQKPVSA
 YALFFRDTQAAIKGQNPSTFGDVSKIIVASMWDSLGEQKQAYKRKTEAAKKEYLKALAAAYRASLVSKSS
 PDQGETKSTQANPPAKMLPPKQPMYAMPGLASFLTPSDLQAFRSGASPLARTLGSKSLLPGLSASPPP
 PPSFPLSPTLHQQLSLPPHAQGALLSPPVSMSPAPQPPVLPMPALQVQLAMSPSPGPQDFPHISEFPS
 SSGSCSPGPSNPTSSGDWDSYPSGECGISTCSLLPRDKSLYLT

TRTRPLEQKLISEEDLAANDILDYKDDDDKV

Chromatograms:

https://cdn.origene.com/chromatograms/mk6578_h12.zip

Restriction Sites:

Sgfl-Mlul

Cloning Scheme:


ACCN: NM_001098796

ORF Size: 1392 bp

OTI Disclaimer: The molecular sequence of this clone aligns with the gene accession number as a point of reference only. However, individual transcript sequences of the same gene can differ through naturally occurring variations (e.g. polymorphisms), each with its own valid existence. This clone is substantially in agreement with the reference, but a complete review of all prevailing variants is recommended prior to use. [More info](#)

OTI Annotation: This clone was engineered to express the complete ORF with an expression tag. Expression varies depending on the nature of the gene.

Components: The ORF clone is ion-exchange column purified and shipped in a 2D barcoded Matrix tube containing 10ug of transfection-ready, dried plasmid DNA (reconstitute with 100 ul of water).

Reconstitution Method:

1. Centrifuge at 5,000xg for 5min.
2. Carefully open the tube and add 100ul of sterile water to dissolve the DNA.
3. Close the tube and incubate for 10 minutes at room temperature.
4. Briefly vortex the tube and then do a quick spin (less than 5000xg) to concentrate the liquid at the bottom.
5. Store the suspended plasmid at -20°C. The DNA is stable for at least one year from date of shipping when stored at -20°C.

RefSeq: [NM_001098796.2](#)

RefSeq Size: 2433 bp

RefSeq ORF: 1395 bp

Locus ID: 84969

UniProt ID: [Q96NM4](#)

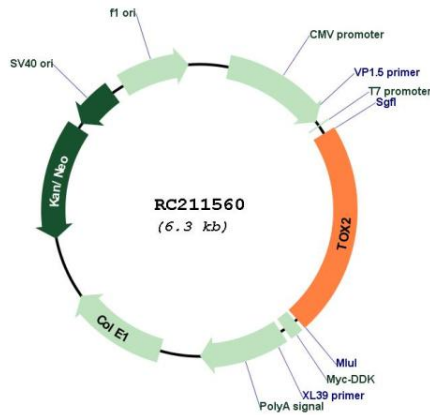
Cytogenetics: 20q13.12

Protein Families: Transcription Factors

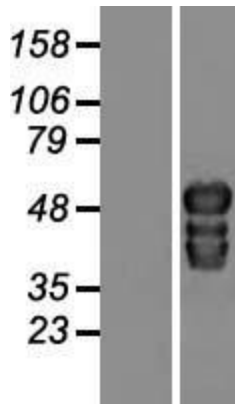
MW: 48.9 kDa

Gene Summary: Putative transcriptional activator involved in the hypothalamo-pituitary-gonadal system. [UniProtKB/Swiss-Prot Function]

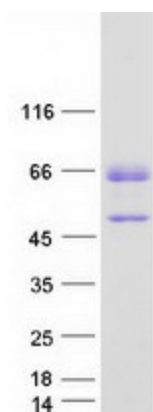
Product images:



Circular map for RC211560



Western blot validation of overexpression lysate (Cat# [LY409809]) using anti-DDK antibody (Cat# [TA50011-100]). Left: Cell lysates from untransfected HEK293T cells; Right: Cell lysates from HEK293T cells transfected with [RC214920] using transfection reagent MegaTran 2.0 (Cat# [TT210002]).



Coomassie blue staining of purified TOX2 protein (Cat# [TP311560]). The protein was produced from HEK293T cells transfected with TOX2 cDNA clone (Cat# RC211560) using MegaTran 2.0 (Cat# [TT210002]).