

Product datasheet for **RC211558**

SOCS7 (NM_014598) Human Tagged ORF Clone

Product data:

Product Type:	Expression Plasmids
Product Name:	SOCS7 (NM_014598) Human Tagged ORF Clone
Tag:	Myc-DDK
Symbol:	SOCS7
Synonyms:	NAP4; NCKAP4
Mammalian Cell Selection:	Neomycin
Vector:	pCMV6-Entry (PS100001)
E. coli Selection:	Kanamycin (25 ug/mL)



[View online »](#)

ORF Nucleotide Sequence:

>RC211558 representing NM_014598
 Red=Cloning site Blue=ORF Green=Tags(s)

TTTTGTAATACGACTCACTATAGGGCGGCCGGGAATTCGTCGACTGGATCCGGTACCGAGGAGATCTGCC
 GCC**CGGATCGCC**

ATGGTGTTCGCCAACGTGGGTCCGCCGCCGGAGGAGGACGTGGAGGCGGCCCGGAGCCGGGACCTT
 CGGAAGTCTGTGTCGCCGGCACCGCTGTGCCCTGGACCCCAAGGCCCTGCCGCCGGCTTGGCGCTCGA
 GCGGACCTGGGGCCCGCGGCTGGACTAGAGGCGCAGTTGGCGGCTCTGGGGCTCGGGCAGCCGGCGGGG
 CCGGGGTCAAGACAGTCGGTGGGGTTGCTGCCCGTGTCCGTGTCTCCTCAGCCGCCCTCCGACG
 CCCAGCCGCTGCTGCCGCCCGCAGGCCGGGAGGCCACCGAAACGAGCGACGCGTCTGGTCTCT
 GGAGGGCTTGAATCGGAGGCCGAGAGCCTGGAGACTAACAGTGTCTCGAAGAGGAGCTCAGCAGCCG
 GGTCGCGGAGGAGGGGGCGGCCGCTTCTGCTGCAGCCCCAGGCCCTGAATTACCTCCGGTGCCTT
 TCCCGTGCAGGACTTGGTCCCTCTGGGCGCCTGAGTAGAGGGGAGCAGCAGCAGCAGCAGCAGCA
 ACCTCCCCGCCCCCGCCTCCTCCGGGCCCTCCGGCCACTCGCGGGTCTTCTCGGAAGGGCTCTTC
 AAAATCCGCCTCAGTCGCCTCTTTCGCACCAAGAGCTGCAACGGTGGCTCCGGCGGTGGGATGGGACCG
 GCAAGAGGCCTTCTGGAGAGCTGGCTGCTTACGCTGCGAGCCTGACAGACATGGGAGGCTCTGCGGGCCG
 GGAGCTGGACGCGGGGAGGAAACCAAGTTGACAAGAAGCTCAAAGTGCCTTTTCTCCGGTCTCTTACG
 CCCCTGTTACAGGTGAAACTGTGTCGCTTGTGGATGTGGACATTTCTCAGCGGGGCTGACCTCTCCAC
 ACCCTCCAACCTCCCTCCTCCTCCGAGAAGAAGCCTCAGCCTCCTAGATGATATCAGTGGGACGCTGCC
 TACATCTGTCTTGTGGTCCGATGGGGTCTTCTTGCAGTCTTCCCTTACCTCCGCCTCTCCACCC
 CATGCCCCAGATGCATTTCCCGGATTGCTCCCATCCGAGCAGCTGAATCCCTGCACAGCAACCCAGGAA
 AGCACCTCAGTGTCCCTCTACCGGCCGACTCGAGCAGCTTTCAGCCAGCCTTCGAGAGTTGGAGAA
 GTGTGGTTGGTATTGGGGCCAATGAATTGGGAAGATGCAGAGATGAAGCTGAAAGGGAACAGATGGT
 TCTTCTGTTACGAGACAGTCTGATCCTCGTTACATCCTGAGCCTCAGTTTCCGATCACAGGGTATCA
 CCCACCACACTAGAATGGAGCACTACAGAGGAACCTTACGCTGTGGTGCATCCCAAGTTTGGAGACCG
 CTGTCAATCTGTTGTAGAGTTTATTAAGAGAGCCATTATGCACTCCAAGAATGAAAGTTTCTCTATTTT
 TTAAGATCCAGGGTCCAGGACTGCCACCAACTCCTGTCCAGTCTCTATCCAGTGTCCCGATTACGCA
 ATGTCAAATCCCTCCAGCACCTTTCAGATTCCGGATACGACAGCTCGTCAGGATAGATCACATCCAGA
 TCTCCCACTGCCTAAACCTCTGATCTTATATCCGAAAGTTCTACTACTATGATCCTCAGGAAGAGGTA
 TACCTGTCTTAAGGAAGCGCAGCTCATTCCAAACAGAAGCAAGAGGTGGAACCTCCACG

ACGCGTACGCGGCCGCTCGAGCAGAAACTCATCTCAGAAGAGGATCTGGCAGCAAATGATATCCTGGATT
 ACAAGGATGACGACGATAAGGTTTAA

Protein Sequence:

>RC211558 representing NM_014598
 Red=Cloning site Green=Tags(s)

MVFRNVGRPPEEDVEAAPEPGPSELLCPRHRCALDPKALPPGLALERTWGPAAGLEAQLAALGLGQPAG
 PGVKTVGGGCCPCPPQPPPPQPPAAAPQAGEDPTETSDALLVLEGLSEAELETNSCSEELSSP
 GRGGGGGRLLLQPPGPELPPVPFPLQDLVPLGRLSRGEQQQQQQPPPPPPPPGLRPLAGPSRKGSF
 KIRLSRLFRKSCNGSGGGDGTGKRPSGELAASAASL TDMGGSAGRELDAGRPKL TRTQSAFSPVSFS
 PLFTGETVSLVDVDISQRGLTSPHPPTPPPPRRSLSLDDISGLTPTSVLVAPMGSSLQSFPLPPPPP
 HAPDAFPRIAPIRAAESLHSQPPQHLQCPLYRPDSSSFAASLRELEKCGWYWGPMNWEDAEMKLGKPDG
 SFLVRDSSDPRIYLSLFRSQGITHHTRMEHYRGTFSLWCHPKFEDRCQSVVEF IKRAIMHSKNGKFLYF
 LRSRVPGLPPTPVQLLYPVSRLFVSNVKSQHLQHLRFRIRQLVRIDHIPDLPLPKPLISYIRKFFFFYDQEEV
 YLSLKEAQLISKQKQEVPEPST

TRTRPLEQKLISEEDLAANDILDYKDDDDKV

Chromatograms:

https://cdn.origene.com/chromatograms/mk8025_a11.zip

Restriction Sites:

Sgfl-Mlul

Cloning Scheme:


ACCN: NM_014598

ORF Size: 1743 bp

OTI Disclaimer: The molecular sequence of this clone aligns with the gene accession number as a point of reference only. However, individual transcript sequences of the same gene can differ through naturally occurring variations (e.g. polymorphisms), each with its own valid existence. This clone is substantially in agreement with the reference, but a complete review of all prevailing variants is recommended prior to use. [More info](#)

OTI Annotation: This clone was engineered to express the complete ORF with an expression tag. Expression varies depending on the nature of the gene.

Components: The ORF clone is ion-exchange column purified and shipped in a 2D barcoded Matrix tube containing 10ug of transfection-ready, dried plasmid DNA (reconstitute with 100 ul of water).

- Reconstitution Method:**
1. Centrifuge at 5,000xg for 5min.
 2. Carefully open the tube and add 100ul of sterile water to dissolve the DNA.
 3. Close the tube and incubate for 10 minutes at room temperature.
 4. Briefly vortex the tube and then do a quick spin (less than 5000xg) to concentrate the liquid at the bottom.
 5. Store the suspended plasmid at -20°C. The DNA is stable for at least one year from date of shipping when stored at -20°C.

RefSeq: [NM_014598.3](#), [NP_055413.1](#)

RefSeq Size: 2162 bp

RefSeq ORF: 1938 bp

Locus ID: 30837

UniProt ID: [O14512](#)

Cytogenetics: 17q12

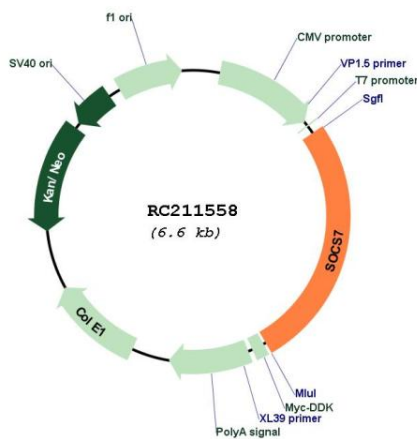
Protein Families: Druggable Genome

Protein Pathways: Jak-STAT signaling pathway

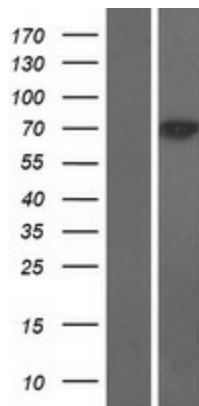
MW: 62.8 kDa

Gene Summary: Regulates signaling cascades probably through protein ubiquitination and/or sequestration. Functions in insulin signaling and glucose homeostasis through IRS1 ubiquitination and subsequent proteasomal degradation. Inhibits also prolactin, growth hormone and leptin signaling by preventing STAT3 and STAT5 activation, sequestering them in the cytoplasm and reducing their binding to DNA. May be a substrate recognition component of a SCF-like E3 ubiquitin-protein ligase complex which mediates the ubiquitination and subsequent proteasomal degradation of target proteins (By similarity).[UniProtKB/Swiss-Prot Function]

Product images:



Circular map for RC211558



Western blot validation of overexpression lysate (Cat# [LY415178]) using anti-DDK antibody (Cat# [TA50011-100]). Left: Cell lysates from untransfected HEK293T cells; Right: Cell lysates from HEK293T cells transfected with RC211558 using transfection reagent MegaTran 2.0 (Cat# [TT210002]).