

Product datasheet for **RC211557**

ZDHC5 (NM_015457) Human Tagged ORF Clone

Product data:

Product Type:	Expression Plasmids
Product Name:	ZDHC5 (NM_015457) Human Tagged ORF Clone
Tag:	Myc-DDK
Symbol:	ZDHC5
Synonyms:	DHC5; ZNF375
Mammalian Cell Selection:	Neomycin
Vector:	pCMV6-Entry (PS100001)
E. coli Selection:	Kanamycin (25 ug/mL)



[View online »](#)

ORF Nucleotide
Sequence:

>RC211557 representing NM_015457
Red=Cloning site Blue=ORF Green=Tags(s)

TTTTGTAATACGACTCACTATAGGGCGGCCGGGAATTCGTCGACTGGATCCGGTACCGAGGAGATCTGCC
GCC**CGGATCGCC**

ATGCCCGCAGAGTCTGGAAGAGATTCAAACCCAGCAAGTATGTCCCGGTCTCTGCAGCCGCCATCTTCC
TAGTGGGAGCTACGACACTCTTCTTTGCCTTTACGTGTCCAGGACTAAGCCTGTATGTGTACCTGCAGT
GCCCATCTACAATGCAATTATGTTTCTCTTTGTGTTGGCCAACCTCAGCATGGCCACCTTCATGGACCCA
GGGATTTTCCCTCGAGCTGAGGAGGATGAGGACAAGGAAGATGATTTCCGAGCTCCCCTTTACAAAACAG
TGGAGATAAAGGGCATCCAGGTGCGCATGAAATGGTGTGCCACCTGCCGCTTTTACCGTCCCCTCGATG
TTCCCACTGCAGTGTCTGTGACAACTGTGTGGAGGAATTTGATCATCACTGCCCTGGGTGAATAACTGT
ATTGGTCGCCGGAACACCGTTATTTTTCTTTTCTCTTTCCCTGACAGCCACATTATGGGTGTGT
TTGGCTTTGGCCTCCTTTATGCCTCTACCACATAGAGGAACCTCAGGGGTCCGCACGGCTGTCAAT
GGCAGTAATGTGTGGTGGCTTATTCTTCATCCTGTAGCTGGCCTCACGGGATTTACAGTGGTCTGT
GTGGCCAGGGGACGCACAACCAATGAACAGGTTACGGGTAATTCGGGGAGGTGAACCCCTTACCA
ATGGCTGTGTAACAATGTCAGCCGTGTTCTCTGCAGTTCCTCCAGCACCCAGGATTTGGGGAGACCAAA
GAAAGAGAAGACAATTGTAATCAGACCTCCCTTCTCGACCAGAAGTTTCAGATGGGCAGATAACTGTG
AAGATCATGGATAATGGCATCCAGGGAGAGCTGAGGAGAACAAAGTCTAAGGGAAGCCTGGAGATAACAG
AGAGCCAGTCTGCAGATGCTGAACCTCCACCTCCTCCTAAGCCAGACCTGAGCCGTTACACAGGGTTGCG
AACACACCTCGGCTTGGCTACTAATGAGGATAGTAGCTTATTGGCCAAGGACAGCCCCGACACCTACC
ATGTACAAGTATCGGCCGGTACAGTAGCAGCAGTACGTGAGTGCATGCCGATTCTCCAGCGCCA
AGTTGAGTCTGGGGACAGCTTGAAGGAGCCAACCTCAATTGCAGAGAGCAGCCGTCAACCCAGCTACCG
CTCAGAGCCAGCTTGGAAACCAGAGAGCTTCCGTTCTCCTACCTTTGGCAAAAAGTTTTCACTTCGATCCA
CTATCCAGTGGCTCACGCTCCTCCAGCCTCAAGTCAGCCAGGGCACAGGCTTTGAGCTGGGCCAGTTGC
AATCCATTGTTTCAGAGGGCACCACTCCACCTCCTATAAGAGCCTGGCCAACCAGACACGCAATGGAAG
CCTATCTTATGACAGCTTGTCTCACACCTTCAGACAGCCCTGATTTTGTGTCAGTGCAGGCAGGGCCTGAG
CCAGACCCACCTTAGGCTATACCTCTCCCTTCTGTGAGCCAGGCTGGCCAGCAACGGGAAGCTGAGA
GGCACCCACGTTTGGTGCCAACCTGGCCAACACACCGAGAGCCCTCACCACTCCGTTACGACAATCTGTC
GCGCCACATTGTGGCCTCTCTCCAGGAACGAGAGAAGTTGCTGCGCCAGTCAACCCACTCCCGGGCCGT
GAGGAAGAACCAGGCTTGGGGGACTCAGGCATTCAGTCAACACCAGGCTCGGGCCATGCCCTCGTACTA
GTTCTCCTCAGATGATTCAAAGAGATCACCTTTGGGCAAGACTCCACTGGGACGCCAGCTGTCCCCCG
TTTTGGCAAGCCAGATGGGCTAAGGGGCGGGGAGTAGGGTCCCCTGAACCAGGCCAACAGCCCCATAC
CTGGGCGGATCGATGTCTTACAGCAGCCAAAAGCCCAACCTGGTGTCTCTGAGACAGAAGAAGTGGCCT
TGCAGCCATTACTGACACCCAAAGATGAAGTACAGCTGAAGACCCTACAGCAAATCCAACGGGCAGCC
CAAGAGCTTAGGCTCAGCCTCCCTGGCCAGGCCAGCCACCTCTCAGTAGCCCCACGAGGGGAGGAGTC
AAGAAGGTGTGAGGGTGGTGGTACCACCTATGAGATTCGGTG

ACGCGTACGCGGCCGCTCGAGCAGAACTCATCTCAGAAGAGGATCTGGCAGCAAATGATATCCTGGATT
ACAAGGATGACGACGATAAGGTTTAA

Protein Sequence: >RC211557 representing NM_015457
Red=Cloning site Green=Tags(s)

MPAESGKRFKPSKYVPSAAAIFLVGATTLFFAFTCPGLSLYVSPAVPIYNAIMFLFVLANFMSMATFMDP
 GIFPRAEDEDKEDDFRAPLYKTVEIKGIQVRMKWCATCRFYRPPRCSHCSVCDNCVEEFDHHCPWVNNC
 IGRRNRYFFFLFLLSLTAHIMGVFGFLLYVLYHIEELSGVRTAVTMAMCVAGLFFIPVAGLTGFHVVL
 VARGRTTNEQVTGKFRGGVNPFTNGCCNNVSRVLCSSPAPRYLGRPKKEKTIVIRPFLRPEVSDGQITV
 KIMDNIGIQGELRRTKSGSLEITESQSADAEP PPPPKPDL SRYTGLRTHLGLATNEDSSLLAKDSPPTPT
 MYKYRPGYSSSSTSAAMPHSSSAKLSRGDSLKEPTSAEASSRHPSYRSEPSLEPESFRSPTFGKSFHFD
 LSSGSRSSSLKSAQGTGFELGQLQSIRSEGTSTSYKSLANQTRNGLSYDSSLTPSDSPDFESVQAGPE
 PDPPLGYTSPFLSARLAQQREAERHPRLVPTGPTHREPSVRYDNL SRHIVASLQEREKLLRQSPPLPGR
 EEEPLGDSGIQSTPGSGHAPRTSSSSDDSKRSPLGKTPLGRPAVPRFGKPDGLRGRGVGSPGPTAPY
 LGRMSYSQKAQPGVSETEEVALQPLLTPKDEVQLKTTYSKSNGQPKSLGSASPGQPPLSSPTRGGV
 KKVSGVGGTTYEISV

TRTRPLEQKLISEEDLAANDILDYKDDDDKV

Chromatograms: https://cdn.origene.com/chromatograms/mk8009_c11.zip

Restriction Sites: SgfI-MluI

Cloning Scheme:

Cloning sites used for ORF Shuttling:



* The last codon before the Stop codon of the ORF

ACCN: NM_015457

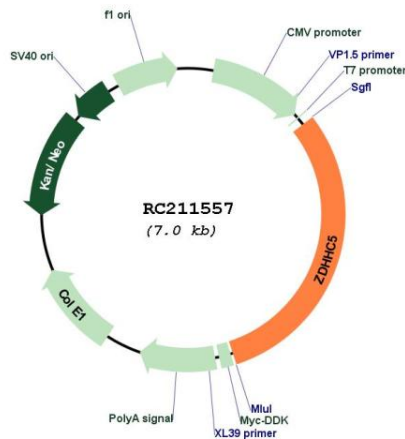
ORF Size: 2145 bp

OTI Disclaimer: The molecular sequence of this clone aligns with the gene accession number as a point of reference only. However, individual transcript sequences of the same gene can differ through naturally occurring variations (e.g. polymorphisms), each with its own valid existence. This clone is substantially in agreement with the reference, but a complete review of all prevailing variants is recommended prior to use. [More info](#)

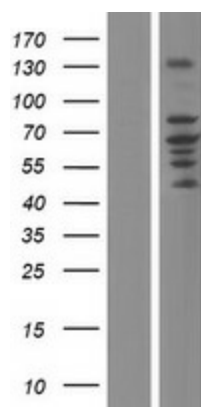
OTI Annotation: This clone was engineered to express the complete ORF with an expression tag. Expression varies depending on the nature of the gene.

- Components:** The ORF clone is ion-exchange column purified and shipped in a 2D barcoded Matrix tube containing 10ug of transfection-ready, dried plasmid DNA (reconstitute with 100 ul of water).
- Reconstitution Method:**
1. Centrifuge at 5,000xg for 5min.
 2. Carefully open the tube and add 100ul of sterile water to dissolve the DNA.
 3. Close the tube and incubate for 10 minutes at room temperature.
 4. Briefly vortex the tube and then do a quick spin (less than 5000xg) to concentrate the liquid at the bottom.
 5. Store the suspended plasmid at -20°C. The DNA is stable for at least one year from date of shipping when stored at -20°C.
- Note:** Plasmids are not sterile. For experiments where strict sterility is required, filtration with 0.22um filter is required.
- RefSeq:** [NM_015457.3](#)
- RefSeq Size:** 4582 bp
- RefSeq ORF:** 2148 bp
- Locus ID:** 25921
- UniProt ID:** [Q9C0B5](#)
- Cytogenetics:** 11q12.1
- Protein Families:** Transmembrane
- MW:** 77.4 kDa
- Gene Summary:** Palmitoyl acyltransferase for the G-protein coupled receptor SSTR5. Also palmitoylates FLOT2 (By similarity).[UniProtKB/Swiss-Prot Function]

Product images:



Circular map for RC211557



Western blot validation of overexpression lysate (Cat# [LY414538]) using anti-DDK antibody (Cat# [TA50011-100]). Left: Cell lysates from untransfected HEK293T cells; Right: Cell lysates from HEK293T cells transfected with RC211557 using transfection reagent MegaTran 2.0 (Cat# [TT210002]).