

Product datasheet for **RC211549**

MMP25 (NM_022468) Human Tagged ORF Clone

Product data:

Product Type:	Expression Plasmids
Product Name:	MMP25 (NM_022468) Human Tagged ORF Clone
Tag:	Myc-DDK
Symbol:	MMP25
Synonyms:	MMP-25; MMP20; MMP20A; MMPL1; MT-MMP 6; MT-MMP6; MT6-MMP; MT6MMP; MTMMP6
Mammalian Cell Selection:	Neomycin
Vector:	pCMV6-Entry (PS100001)
E. coli Selection:	Kanamycin (25 ug/mL)



[View online »](#)

ORF Nucleotide Sequence:

>RC211549 representing NM_022468
 Red=Cloning site Blue=ORF Green=Tags(s)

TTTTGTAATACGACTCACTATAGGGCGGCCGGAATTCGTCGACTGGATCCGGTACCGAGGAGATCTGCC
 GCC**CGATCGCC**

ATGCGGCTGCGGCTCCGGCTTCTGGCGCTGCTGCTTCTGCTGCTGGCACCGCCCGCGCGCCCCGAAGC
 CCTCGGCCGAGGACGTGAGCCTGGGCGTGGACTGGCTGACTCGCTATGGTTACCTGCCGCCACCCACCC
 TGCCAGGCCAGCTGCAGAGCCCTGAGAAGTTGCGCGATGCCATCAAAGTCATGCAGAGGTTCCGGGGG
 CTGCCGAGACCGGCCGCATGGACCCAGGGACAGTGGCCACCATGCGTAAGCCCCGCTGCTCCCTGCCTG
 ACGTGCTGGGGTGGCGGGGCTGGTCCAGCGCGCTCGCCGGTACGCTCTGAGCGGCAGCGTGTGAAGAA
 GCGAACCTGACATGGAGGTACGTTCTTCCCCAGAGCTCCAGCTGAGCCAGGAGACCGTCCGGGTC
 CTCATGAGCTATGCCCTGATGGCCTGGGGCATGGAGTCAAGCCTCACATTTTCATGAGGTGGATCCCCC
 AGGGCCAGGAGCCCGACATCCTCATCGACTTTGCCCGCGCTTCCACCAGGACAGCTACCCCTTCGACGG
 GTTGGGGGACCCCTAGCCCATGCCTTCTCCCTGGGGAGCACCCATCTCCGGGACACTCACTTTGAC
 GATGAGGAGACCTGGACTTTTGGGTCAAAGACGCGGAGGGGACCGACCTGTTTGCCTGGCTGTCCATG
 AGTTTGGCCACGCCCTGGGCTGGGCCACTCTCAGCCCCAACTCCATTATGAGGCCCTTCTACCAGGG
 TCCGGTGGGCGACCTGACAAGTACCGCTGTCTCAGGATGACCGCGATGGCCTGCAGCAACTCTATGGG
 AAGGCGCCCCAAACCCATATGACAAGCCACAAGGAAACCCCTGGCTCTCCGCCCCAGCCCCGGCT
 CGCCACACACAGCCATCCTTCCCATCCCTGATCGATGTGAGGGCAATTTTGACGCCATCGCCAAACAT
 CCGAGGGGAACTTTCTTCTTCAAAGGCCCTGGTCTGGCGCTCCAGCCCTCCGGACAGCTGGTGTC
 CCGGACCCGACGGCTGCACCGCTTCTGGGAGGGGCTGCCGCCAGGTGAGGGTGGTGCAGGCCCT
 ATGCTCGCACCCGAGACGGCCGAATCTCTCTTTCAGCGGGCCCAAGTTCTGGGTTCAGGACCCGCA
 GCTGGAGGGCGGGCGCGCCGCTCACGGAGCTGGGGCTGCCGCCGGGAGAGGAGGTGGACGCCGTGTT
 TCGTGGCCACAGAACGGGAGACCTACCTGGTCCGCGCCGCGAGTACTGGCGCTACGACGAGGCGCGG
 CGCGCCCGGACCCCGCTACCCTCGCGACTGAGCCTCTGGGAAGGCGCGCCCCCTCCCCTGACGATGT
 CACCGTACGAAACGAGGTGACACCTACTTCTTCAAGGGCGCCACTACTGGCGTTCGCCAAGAACAGC
 ATCAAGACCGAGCCGACGCCCCCAGCCCATGGGGCCAACTGGCTGGACTGCCCGCCCCGAGCTCTG
 GTCCCCGCGCCCCAGGCCCCCCAAAGCGACCCCGTGTCCGAAACCTGCGATTGTCAGTGCGAGCTCAA
 CCAGGCCGAGGACGTTGGCTGCTCCATCCCCTGCTCCTTTCGCCCTGCTGGTGGGGGTGTAGCC
 TCCCG

ACGCGTACGCGGCGGCTCGAGCAGAACTCATCTCAGAAGAGGATCTGGCAGCAAATGATATCCTGGATT
 ACAAGGATGACGACGATAAGGTTTAA

Protein Sequence:

>RC211549 representing NM_022468
 Red=Cloning site Green=Tags(s)

MRLRLRLALLLLLLAPPARAPKPSAQDVSLGVDWLTRYGYLPPHPAQAQLQSPEKLRDAIKVMQRFAG
 LPETGRMDPGTVATMRKPRCSLPDVLGVAGLVRRRRRYALSGSVWVKRRTL TWRVRSFPQSSQLSQT
 TVRV LMSYALMAWGMESGLTFHEVDS PQGQEPDILIDFARAFHQDSYFPDGLGGTLAHAFFPGEHPISGDTHFD
 DEETWTFGSKDGEGLDFAVAVHEFGHALGLGHSSAPNSIMRPFYQGPVGD PDKYRLSQDDRGLQQLYG
 KAPQTPYDKPTRKPLAPPPQPPASPTHSPFPIPRCEGNFDAIANIRGETFFFKGPWFWR LQPSGQLVS
 PRPARLHRFWEGLPAQVRVVQAAAYARHRDGRILLFSGPQFVWFQDRQLEGGARPL TELGLPPGEEVDAVF
 SWPQNGKTYLVRGRQYWRVDEAAARPDGYPRLSLWEGAPPSPDDVTVSNAGDTYFFKGAHYWRFPKNS
 IKTEPDAPQPMGNWLD CPAPSSGPRAPRPPKATPVSETCDCQCELNQAAGRWPAPIPLLLLPLL VGGVA
 SR

TRTRPLEQKLISEEDLAANDILDYKDDDDKV

Chromatograms:

https://cdn.origene.com/chromatograms/mg3505_c05.zip

Restriction Sites:

Sgfl-Mlul

Cloning Scheme:


ACCN: NM_022468

ORF Size: 1686 bp

OTI Disclaimer: The molecular sequence of this clone aligns with the gene accession number as a point of reference only. However, individual transcript sequences of the same gene can differ through naturally occurring variations (e.g. polymorphisms), each with its own valid existence. This clone is substantially in agreement with the reference, but a complete review of all prevailing variants is recommended prior to use. [More info](#)

OTI Annotation: This clone was engineered to express the complete ORF with an expression tag. Expression varies depending on the nature of the gene.

Components: The ORF clone is ion-exchange column purified and shipped in a 2D barcoded Matrix tube containing 10ug of transfection-ready, dried plasmid DNA (reconstitute with 100 ul of water).

- Reconstitution Method:**
1. Centrifuge at 5,000xg for 5min.
 2. Carefully open the tube and add 100ul of sterile water to dissolve the DNA.
 3. Close the tube and incubate for 10 minutes at room temperature.
 4. Briefly vortex the tube and then do a quick spin (less than 5000xg) to concentrate the liquid at the bottom.
 5. Store the suspended plasmid at -20°C. The DNA is stable for at least one year from date of shipping when stored at -20°C.

RefSeq: [NM_022468.5](#)

RefSeq Size: 3565 bp

RefSeq ORF: 1689 bp

Locus ID: 64386

UniProt ID: [Q9NPA2](#)

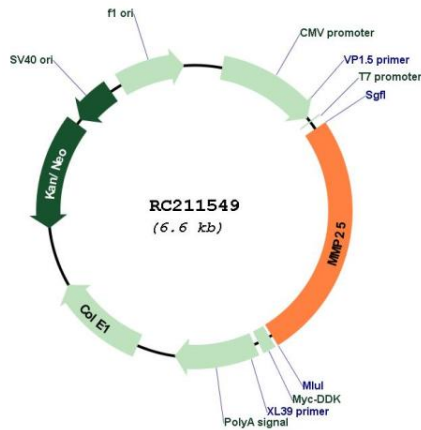
Cytogenetics: 16p13.3

Protein Families: Druggable Genome

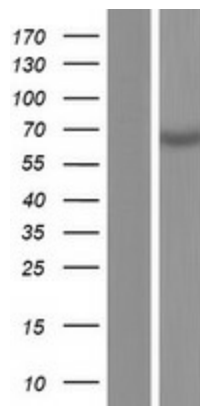
MW: 60.1 kDa

Gene Summary: Proteins of the matrix metalloproteinase (MMP) family are involved in the breakdown of extracellular matrix in normal physiological processes, such as embryonic development, reproduction, and tissue remodeling, as well as in disease processes, such as arthritis and metastasis. Most MMPs are secreted as inactive proproteins which are activated when cleaved by extracellular proteinases. However, the protein encoded by this gene is a member of the membrane-type MMP (MT-MMP) subfamily, attached to the plasma membrane via a glycosylphosphatidyl inositol anchor. In response to bacterial infection or inflammation, the encoded protein is thought to inactivate alpha-1 proteinase inhibitor, a major tissue protectant against proteolytic enzymes released by activated neutrophils, facilitating the transendothelial migration of neutrophils to inflammatory sites. The encoded protein may also play a role in tumor invasion and metastasis through activation of MMP2. The gene has previously been referred to as MMP20 but has been renamed MMP25. [provided by RefSeq, Jul 2008]

Product images:



Circular map for RC211549



Western blot validation of overexpression lysate (Cat# [LY411663]) using anti-DDK antibody (Cat# [TA50011-100]). Left: Cell lysates from untransfected HEK293T cells; Right: Cell lysates from HEK293T cells transfected with RC211549 using transfection reagent MegaTran 2.0 (Cat# [TT210002]).