

Product datasheet for **RC211548**

FYB2 (NM_001004303) Human Tagged ORF Clone

Product data:

Product Type:	Expression Plasmids
Product Name:	FYB2 (NM_001004303) Human Tagged ORF Clone
Tag:	Myc-DDK
Symbol:	FYB2
Synonyms:	ARAP; C1orf168
Mammalian Cell Selection:	Neomycin
Vector:	pCMV6-Entry (PS100001)
E. coli Selection:	Kanamycin (25 ug/mL)



[View online »](#)

ORF Nucleotide
Sequence:

>RC211548 representing NM_001004303
Red=Cloning site Blue=ORF Green=Tags(s)

TTTTGTAATACGACTCACTATAGGGCGGCCGGGAATTCGTCGACTGGATCCGGTACCGAGGAGATCTGCC
GCC**CGCATCGCC**

ATGGAAGGGGAAGGGGTAAAGAACTTCAAGGAAGCTTCAGGCCAAATTTCAAATCTTGATGCTCCACCTC
TCCAGGACCTATTAAATTTCCAGCAGGTGTTTCTCCAAAGGGTGACATTGGAGGCACACAGTCAACTCA
AATTTTGGCCAATGGGAAACCCCTCTCATCCAACCACAAGCAGCGCACACCATACTGTTCCAGTAGTGAG
TCCAGCCTCTTCAACCTCAGAAAATAAAGTTGGCTCAGAAGAGTGAAATTTCAAATGTTCTAACTCCC
CAGGGCCTCTGGGAAAGTCTACTGTATGTTCTGCAACAAGTTCACAGAAGGCTTCTCTGCTGTAGAGGT
GACTCAATCAAATGTTGAGATAACTAAGGAAAAAGTAAATGGTGGCCAATAGCTTCAGAAACAAACTC
TGGAAGTGGGAGAAGGTTTCATCTCAGAAAAGTAAATGTCTTCAGCCCTTCTCCTTGCCAATATGGAA
GTAAAGCCATCCATCTGGAAGGGCAAAAAGGCATGGGGCTTACTCCAGAGGAACCCAGAAAAAGCTGGA
AACAAAAGGAGCCAGACTCTTCTTCCAGAAGCACGTGGTGGCCCCAAAATATTACATAACGTCTCT
GAAGATCCCTCTTTTGAATTTCTCAACATATCAGAAAAAGCTGGGAAAACCCACCTCCTGAGAGGAGCC
CGCAAGCAGCCCTGCCAGCCATCTATGAGTGTGAGCTTGCCAGTCAGGCCCCAGAAAAACAGCCAGA
TGTGAGGCATCACCACCTTCCAAAAACAAAGCCATTGCCCTCCATCGACTCCCTGGGTCCTCCTCCCCCA
AAGCCTTCAAGACCTCCCATCGTGAACCTCCAGGCCTTTCAGAGGCAGCCAGCTGCTGTTCCCAAGACTC
AGGGGGAAGTGACTGTGGAAGAGGGCTCCCTGTCTCCAGAGAGGCTTTTCAATGCAGAATTTGAAGAACC
ACATAATTACGAGGCAACAATTTTCAATCTGAGACACTCTGGCAACTCCATTAACCTGTGCACTGCAAAA
GAAATTTGCTGATCCAACCTATGAAGTTGGAATTTGAAGAAGTCCAAAAGCCTGGGAAAGATTTTCCCTATC
CAGAACCTAGTGCTAAACATGAAGATAAAAAAATGAAGGAAAAACAACCATGTGAATTTGAACTAAAA
CACAGAAAAGGAACCATATTCAAACCATGTTTTCAAGGTAGATGCCTGTGAAGGGACACCTGAAAAAATT
CAGATGACCAACGTCCACACAGGTAGAAGAACATGTTGGCTGGAAAGCAAGAGGCCATGATTGACATCA
TCCAGACAAATCCCTGCCCTGAGGGCCAAAGCTGGCCAGGCACTCCCAAGGCCACTGTGGGCATCTGGA
GGTTTTGGAGTCAACTAAAGAACTCCAGACCTAGGGTCTCTAAGACAAGTTCCATCTCGGAGGAGATA
TATGATGATGTCGAGTACTCCAGGAAAGAGGTACCGAAGCTGAAGTACTTAGCTCACTTGCCTCAAGTA
GTGAAGAAAATAGAGAACTGTATGAAGATGTCTACAAAACAAGAACAACCTACCCAAAGATAGATTTAGA
TGGAAAAGAAGCACTCAAAGACTGCAGCAATTTTCAAGAAAAGAAAAGGATAGATTTAAAATAAAGAAA
ACCAAGTCGAAAAGAAAACCTAAGTGCATTTTCCATTTTGTGCTGCTGATTTAGAAGTAAAGTCTCAGGAAG
TTATTATTTATGATGATGTAGACCTGAGTGAAAAAGAGTCAAAGATGAAGATAAACTGAAAATGTGGAA
GCCAAGTTTCTGACACCAAGGAAAAAAGAGAAAAACGGTGTGTAAGAATCAGAAAAGTTTCTCTCCT
AGAAAATTTCTTCAAACCAAGAAGCAAACTTAGAAAAGAACAAGAAATGAAAAGAGAAGAAAAACTATTTA
GAGAAAGGTTTAAAGTACGACAAAGAGATTATTGTCAATACAGCAGTGGCCTGTTCCAATAATTCAAG
AAATGGAATATTTGATTTGCCAATAAGTCTGGAGAAGAATTGGAAGTCAATGATACCACCGAACAAAAT
CTAGTGATATGTCGTAATTCTAAAGGCAAAATGGATATGTGCTCATTGAACATCTAGATTTCAAGCATC
AAAGTTGGTCACCT

ACGCGTACGCGGCCGCTCGAGCAGAACTCATCTCAGAAGAGGATCTGGCAGCAAATGATATCCTGGATT
ACAAGGATGACGACGATAAGGTTTAA

Protein Sequence: >RC211548 representing NM_001004303
 Red=Cloning site Green=Tags(s)

```
MEGEGVRNFKELRAKFNLDAPPLPGPIKFPAGVSPKGDIGGTQSTQILANGKPLSSNHKQRTPYCSSSE
SQPLQPQKIKLAQKSEIPKCSNSPGPLGKSTVCSATSSQKASLLLEVTQSNVEIITKEKVMVANSFRNKL
WNWEKVSSQKSEMSSALLLANYGSKAIHLEGQKGMGLTPEEPKPKLETGAQTLPQKHVVAPKILHNVS
EDPSFVISOHIRKSWENPPPPERSPASSPCQPIYECELASQAPEKQPDVRRHHHLPKTKPLPSIDSLGPPPP
KPSRPPPIVNLQAFQRQPAAVPKTQGEVTVEEGLSPERLFNAEFEEPHNYEATISYLRHSGNSINLCTAK
EIAADPTYEVGIEELQKPGKNFPYPEPSAKHEDKKMKEKQPCCLKPKNTEKEPYSNHVFKVDACEGTPKI
QMTNVHTGRRNMLAGKQEAMIDI IQTNPCPEGPKLARHSQGHGCHLEVLSTKETPDLGVSKTSSISEEI
YDDVEYSRKEVPKLNYSSSLASSEENREL YEDVYKTKNNYPKIDLDGKEALKRLQQFFKKEKDRFKIKK
TKSKENLSAFSILLPDLELKSQEVIIYDDVDLSEKESKDEKDKMWPKFLTPKEKKEKNGAESESFSP
RNFFKTKKQNLKRNMRKREEKLFRRERFKYDKEIIVINTAVACSNRSRNGIFDLPISPGELEVIDTTEQN
LVICRNSKGKGYVLLIEHLDFKHQSWSP
```

TRTRPLEQKLISEEDLAANDILDYKDDDDKV

Chromatograms: https://cdn.origene.com/chromatograms/mk8025_d04.zip

Restriction Sites: Sgfl-MluI

Cloning Scheme:

Cloning sites used for ORF Shuttling:



* The last codon before the Stop codon of the ORF

ACCN: NM_001004303

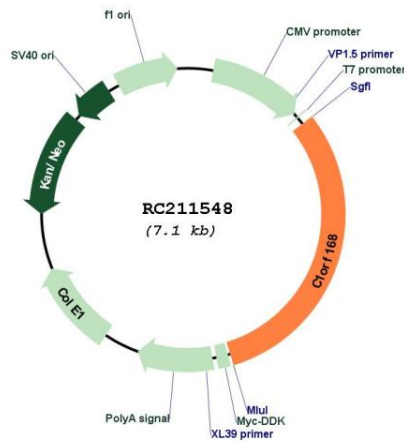
ORF Size: 2184 bp

OTI Disclaimer: The molecular sequence of this clone aligns with the gene accession number as a point of reference only. However, individual transcript sequences of the same gene can differ through naturally occurring variations (e.g. polymorphisms), each with its own valid existence. This clone is substantially in agreement with the reference, but a complete review of all prevailing variants is recommended prior to use. [More info](#)

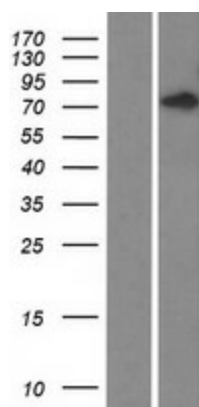
OTI Annotation: This clone was engineered to express the complete ORF with an expression tag. Expression varies depending on the nature of the gene.

Components:	The ORF clone is ion-exchange column purified and shipped in a 2D barcoded Matrix tube containing 10ug of transfection-ready, dried plasmid DNA (reconstitute with 100 ul of water).
Reconstitution Method:	<ol style="list-style-type: none"> 1. Centrifuge at 5,000xg for 5min. 2. Carefully open the tube and add 100ul of sterile water to dissolve the DNA. 3. Close the tube and incubate for 10 minutes at room temperature. 4. Briefly vortex the tube and then do a quick spin (less than 5000xg) to concentrate the liquid at the bottom. 5. Store the suspended plasmid at -20°C. The DNA is stable for at least one year from date of shipping when stored at -20°C.
RefSeq:	<u>NM_001004303.5</u>
RefSeq Size:	3162 bp
RefSeq ORF:	2187 bp
Locus ID:	199920
UniProt ID:	<u>Q5VWT5</u>
Cytogenetics:	1p32.2
MW:	81.9 kDa
Gene Summary:	Adapter protein that plays a role in T-cell receptor (TCR)-mediated activation of signaling pathways. Required for T-cell activation and integrin-mediated T-cell adhesion in response to TCR stimulation (PubMed:27335501).[UniProtKB/Swiss-Prot Function]

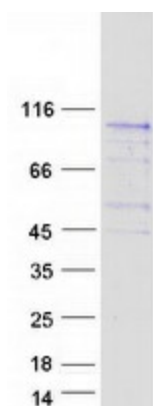
Product images:



Circular map for RC211548



Western blot validation of overexpression lysate (Cat# [LY424080]) using anti-DDK antibody (Cat# [TA50011-100]). Left: Cell lysates from untransfected HEK293T cells; Right: Cell lysates from HEK293T cells transfected with RC211548 using transfection reagent MegaTran 2.0 (Cat# [TT210002]).



Coomassie blue staining of purified FYB2 protein (Cat# [TP311548]). The protein was produced from HEK293T cells transfected with FYB2 cDNA clone (Cat# RC211548) using MegaTran 2.0 (Cat# [TT210002]).