

Product datasheet for RC211546

FILIP1L (NM_182909) Human Tagged ORF Clone

Product data:

Product Type:	Expression Plasmids
Product Name:	FILIP1L (NM_182909) Human Tagged ORF Clone
Tag:	Myc-DDK
Symbol:	FILIP1L
Synonyms:	DOC-1; DOC1; GIP90; GIP130
Vector:	pCMV6-Entry (PS100001)
E. coli Selection:	Kanamycin (25 ug/mL)
Cell Selection:	Neomycin
ORF Nucleotide Sequence:	>RC211546 representing NM_182909 Red=Cloning site Blue=ORF Green=Tags(s)

TTTTGTAATACGACTCACTATAGGGCGCCGGGAATTCGTCGACTGGATCCGGTACCGAGGAGATCTGCC
GCC**CGATCGCC**

ATGCGTCCAGAGGCAGTGATACCGAGGGCTCAGCCAAAAGAAATTTCCAAGACATACTAAAGGCCACA
GTTTCCAAGGGCCTAAAAACATGAAGCATAGACAGCAAGACAAAGACTCCCCAGTGAGTCGGATGTAAT
ACTTCCGTGTCCAAGGCAGAGAAGCCACACAGTGGTAATGGCCACCAAGCAGAAGACCTCTCAAGAGAT
GACCTGTTATTTCTCCTCAGCATTCTGGAGGGAGAAGTGCAGGCTCGAGATGAGGTCATAGGCATTTTAA
AGGCTGAAAAAATGGACCTGGCTTTGCTGGAAGCTCAGTATGGGTTTGTCACTCCAAAAAAGGTGTTAGA
GGCTCTCCAGAGAGATGCTTTTCAAGCGAAATCTACCCCTTGGCAGGAGGACATCTATGAGAAACCAATG
AATGAGTTGGACAAAGTTGTGAAAAACATAAAGAATCTTACAGACGAATCCTGGGACAGCTTTTAGTGG
CAGAAAAATCCCGTAGGCAAAACCATATTGGAGTTGGAGGAAGAAAAGAGAAAACATAAAGAATACATGGA
GAAGAGTGATGAATTCATATGCCTACTAGAACAGGAATGTGAAAGATTAAGAAGCTAATTGATCAAGAA
ATCAAGTCTCAGGAGGAGAAGGAGCAAGAAAAGGAGAAAAGGGTCACCACCCTGAAAGAGGAGCTGACCA
AGCTGAAGTCTTTTGGCTTTGATGGTGGTGGATGAACAGCAAAGGCTGACGGCACAGCTCACCTTCAAAG
ACAGAAAATCCAAGAGCTGACCACAAATGCAAAGGAAACACATACCAAACCTAGCCCTTGCTGAAGCCAGA
GTTCCAGGAGGAAGAGCAGAAGGCAACCAGACTAGAGAAGGAACTGCAAACGCAGACCACAAAAGTTTCACC
AAGACCAAGACACAATTATGGCGAAGCTCACCAATGAGGACAGTCAAATCGCCAGCTTCAACAAAAGCT
GGCAGCACTCAGCCGGCAGATTGATGAGTTAGAAGAGACAAAAGGTCCTTACGAAAAGCAGAAGAGGAG
CTGCAAGATATAAAAAGAAAAATCAGTAAGGGAGAATATGAAACGCTGGTATCATGGCTGAAGTGGAAAG
AGCTCAGGAAACGTGTGCTAGATATGGAAGGGAAAGATGAAGAGCTCATAAAAAATGGAGGAGCAGTGCAG
AGATCTCAATAAGAGGCTTGAAAGGGAGACGTTACAGAGTAAAGACTTTAACTAGAGGTTGAAAAACTC
AGTAAAAGAATTATGGCTCTGAAAAGTTAGAAGACGCTTCAACAAAAGCAAACAAGAATGCTACTCTC
TGAAATGCAATTTAGAAAAGAAAGGATGACCACAAAGCAGTTGTCTCAAGAACTGGAGAGTTTAAAGT
AAGGATCAAAGAGCTAGAAGCCATTGAAAGTCGGCTAGAAAAGACAGAATCACTCTAAAAGAGGATTTA
ACTAAACTGAAAACATTAACCTGTGATGTTGTAGATGAACGGAAAACAATGAGTGAAAAATTAAGAAAA



[View online »](#)

CTGAAGATAAATTACAAGCTGCTTCTTCTCAGCTTCAAGTGGAGCAAAATAAAGTAAACAACAGTTACTGA
 GAAGTTAATTGAGGAACTAAAAGGGCGCTCAAGTCCAAAACCGATGTAGAAGAAAAGATGTACAGCGTA
 ACCAAGGAGAGAGATGATTTAAAAACAATTGAAAGCGGAAGAAGAAAGAAATGATCTCCTGTCAA
 GAGTTAATATGTTGAAAAATAGGCTTCAATCATTGGAAGCAATTGAGAAAGATTTCTAAAAACAATT
 AAATCAAGACTCTGGGAAATCCACAACAGCATTACACCAAGAAAACAATAAGATTAAGGAGCTCTCTCA
 GAAGTGGAAAGACTGAAACTGAAGCTAAGGACATGAAAGCCATTGAGGATGACCTCATGAAAACAGAAG
 ATGAATATGAGACTCTAGAACGAAGGTATGCTAATGAACGAGACAAAGCTCAATTTTTATCTAAAGAGCT
 AGAACATGTTAAAAATGGAACCTTGCTAAGTACAAGTTAGCAGAAAAGACAGAGACCCATGAACAATGG
 CTTTTCAAAGGCTTCAAGAAGAAGAAGCTAAGTCAAGGACCTCTCAAGAGAAGTGGATGCATTAAGAG
 AGAAAATTCATGAATACATGGCAACTGAAGACCTAATATGTCACCTCCAGGGAGATCACTCAGTCTGCA
 AAAAAACTAAATCAACAAGAAAACAGGAACAGAGATTTAGGAAGAGAGATTGAAAACCTCACTAAGGAG
 TTAGAGAGGTACCGCATTTTCAGTAAGAGCCTCAGGCCTAGTCTCAATGGAAGAAGAAATTTCCGATCCTC
 AAGTATTTCTAAAGAAGTTCAGACAGAAGCAGTAGACAATGAACCCTGATTACAAGAGCCTCATTCC
 TCTGGAACGTGCAGTCATCAATGGTCAGTTATATGAGGAGAGTGAGAATCAAGACGAGGACCTAATGAT
 GAGGGATCTGTGCTGTCCTTCAAATGCAGCCAGTCTACTCCATGTCTGTTAACAGAAAGCTATGGATTC
 CCTGGATGAAATCCAAGGAGGGCCATCTTCAGAATGGAATAATGCAAACTAAACCAATGCCAATTTGT
 GCAACCTGGAGATCTAGTCTAAGCCACACACCTGGGCAGCCACTTCATATAAAGGTTACTCCAGACCAT
 GTACAAAACACAGCCACTCTTGAATCACAAAGTCCAACCACAGAGAGTCTCACTCTTACACGAGTACTG
 CAGTGATACCGAACTGTGGCAGGCCAAAGCAAAGGATAACCATCTCCAAAACGCCTCCATAACACCAGT
 AAAGTCCAAAACCTCTACCGAAGACCTCATGAATTTAGAACAAGGCATGTCCCAATTACCATGGCAACC
 TTTGCCAGAGCACAGACCCAGAGTCTTGTGGTCTCTAACTCCAGAAAGGACAAATGTCCCTATTGAGG
 TTTTGGCTGTGACTGGTTCAGCTAGCTCTCCTGAGCAGGGACGCTCCCGAAGCAACAGAAATCAGTGC
 CAAGCATGCGATATTCAGAGTCTCCCGACAGCCAGTCACTGTCAGGATTTGAGCGTTTCAACAGCAAT
 AGCTCAAGTGTGATAACTACTGAGGATAATAAAAATCCACATTCACTTAGGAAGTCTTACATGCAAGCTG
 TAGCCAGCCCTGTGAGACCTGCCAGCCCTTCAAGCAGGATAACCGAACTCAAGGCTTAATTA
 CGGGGCACTAAACAAAACAACCAATAAAGTCAACAGCAGTATTACTATCACACCAACAGCCACACCTCT
 CCTCGACAATCACAAATTACAGTGAACCACTTCTTCTGCCTCAT

ACGCGTACGCGGCCGCTCGAGCAGAACTCATCTCAGAAGAGGATCTGGCAGCAATGATATCCTGGATT
 ACAAGGATGACGACGATAAGGTTTAA

Protein Sequence:

>RC211546 representing NM_182909
 Red=Cloning site Green=Tags(s)

MRSRGSDEGSAQKQKFPRHKGFQGPKNMKHRQDKDPSSESDVILPCPKAEKPHSGNGHQAEDLSRD
 DLLFLLSILEGELQARDEVIGILKAEKMDLALLEAQYGFVTPKKVLEALQRDAFQAKSTPWQEDIYEKPM
 NELDKVVEKHKESYRRILGQLLVAEKSRRTILELEEEKRKHKEYMEKSDEFICLLEQECERLKKLIDQE
 IKSQEEKEQEKEKRVTTLKEELTKLKSFAALMVVDEQQRLLTAQLTLQRQKIQELTTNAKETHTKLALAEAR
 VQEEEQKATRLEKELQTQTTFHQDQDTIMAKLTNEDSQNRQLQKLAALSRQIDEEETNRSLRKAEEE
 LQDIKEKISKGEYGNAGIMAEVEELRKRVLDMEGKDEELIKMEEQCRDLNKRLERETLSKDFKLEVEKL
 SKRIMALEKLEDAFNKSKQECYSLKCNLEKERMTTKQLSQELESCLKVRIKELAEIESRLEKTEFTLKEDL
 TKLKTLLVMFVDERKTMSEKLLKTEDKLQAASSQLQVEQNKVTTVTEKLIETKRALKSKTDVEEKMYSV
 TKERDDLKNLKAEEKGNLRLSRVNMMLKNRLQSLAEIEKDFLKNLKNQDSGKSTALHQENNIKELSQ
 EVERLKLKLDKMAIEDDLMKTEDEYETLERRYANERDKAQFLSKELHVKMELAKYKLAETKETSHEQW
 LFKRLQEEEAQSGHLREVDALKEKIEHYMATEDLICHLQGDHSLVQKLNQENRNRDLGREIENLTKE
 LERYRHFSKSLRPSLNGRRI SDPQVF SKEVQTEAVDNEPPDYKSLIPLERAVINGQLYEESENQDEPND
 EGSVLSFKCSQSTPCPVNRKLWIPWMSKEGHLQNGKMQTKPNANFVQPGDLVLSHTPGQPLHIKVTDPH
 VQNTATLEITSPTTESPHSYTSTAVIPNCGTPKQRITILQNASITPVKSKTSTEDLMNLEQGMSPITMAT
 FARAQTPESCGSLTPERTMSPIQVLAVTGSASSPEQGRSPEPTEISAKHAIFRVSPDRQSSWQFQRSNSN
 SSSVITTEDNKIHIHLGSPYMQAVASVPRPASPSAPLQDNRTQGLINGALNKTTNKVTSITITPTATPL
 PRQSQITVEPLLLPH

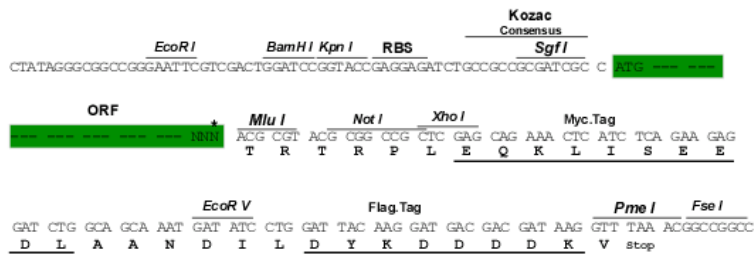
TRTRPLEQKLISEEDLAANDILDYKDDDDKV

Restriction Sites:

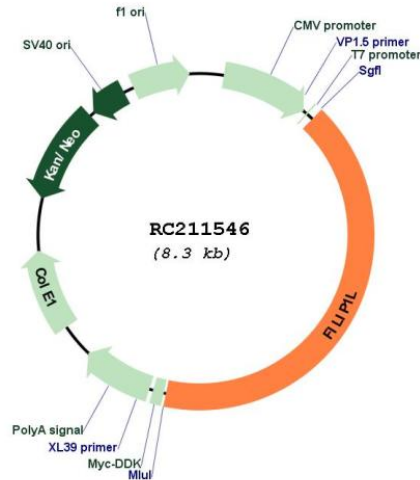
SgfI-MluI

Cloning Scheme:

Cloning sites used for ORF Shuttling:



* The last codon before the Stop codon of the ORF

Plasmid Map:


ACCN: NM_182909

ORF Size: 3405 bp

OTI Disclaimer: The molecular sequence of this clone aligns with the gene accession number as a point of reference only. However, individual transcript sequences of the same gene can differ through naturally occurring variations (e.g. polymorphisms), each with its own valid existence. This clone is substantially in agreement with the reference, but a complete review of all prevailing variants is recommended prior to use. [More info](#)

OTI Annotation: This clone was engineered to express the complete ORF with an expression tag. Expression varies depending on the nature of the gene.

Components: The ORF clone is ion-exchange column purified and shipped in a 2D barcoded Matrix tube containing 10ug of transfection-ready, dried plasmid DNA (reconstitute with 100 ul of water).

Reconstitution Method:

1. Centrifuge at 5,000xg for 5min.
2. Carefully open the tube and add 100ul of sterile water to dissolve the DNA.
3. Close the tube and incubate for 10 minutes at room temperature.
4. Briefly vortex the tube and then do a quick spin (less than 5000xg) to concentrate the liquid at the bottom.
5. Store the suspended plasmid at -20°C. The DNA is stable for at least one year from date of shipping when stored at -20°C.

RefSeq: [NM_182909.3](#)

RefSeq Size: 3962 bp

RefSeq ORF: 3408 bp

Locus ID: 11259

UniProt ID: [Q4L180](#)

Cytogenetics: 3q12.1

MW: 130.2 kDa

Gene Summary: Acts as a regulator of the antiangiogenic activity on endothelial cells. When overexpressed in endothelial cells, leads to inhibition of cell proliferation and migration and an increase in apoptosis. Inhibits melanoma growth When expressed in tumor-associated vasculature. [UniProtKB/Swiss-Prot Function]