

Product datasheet for **RC211542**

KCNIP4 (NM_147181) Human Tagged ORF Clone

Product data:

Product Type:	Expression Plasmids
Product Name:	KCNIP4 (NM_147181) Human Tagged ORF Clone
Tag:	Myc-DDK
Symbol:	KCNIP4
Synonyms:	CALP; KCHIP4
Mammalian Cell Selection:	Neomycin
Vector:	pCMV6-Entry (PS100001)
E. coli Selection:	Kanamycin (25 ug/mL)
ORF Nucleotide Sequence:	>RC211542 representing NM_147181 Red =Cloning site Blue =ORF Green =Tags(s)

TTTTGTAATACGACTCACTATAGGGCGGCCGGAATTCGTCGACTGGATCCGGTACCGAGGAGATCTGCC
 GCCCGATCGCC

ATGAATGTGAGGAGGTGGAAAGCATTTTCGGCTCAGCTGGAGGAGGCCAGCTCTACAGGCGACAGCGTGG
 AAGATGAAGTGGAGATGGCCACCGTCAGGCATCGGCCTGAAGCCCTTGAGCTTCTGGAAGCCCAGAGCAA
 ATTTACCAAGAAAGAGCTTCAGATCCTTTACAGAGGATTTAAGAATGAATGCCCCAGTGGTGTGTTAAT
 GAAGAAACCTTCAAAGAGATTTACTCGCAGTTCTTTCCACAGGGAGACTCTACAACATATGCACATTTTC
 TGTTCAATGCATTTGATACAGACCACAATGGAGCTGTGAGTTTCGAGGATTTTCATCAAAGGTCTTTCCAT
 TTTGCTCCGGGGACAGTACAAGAAAACTCAATTGGGCATTTAATCTGTATGACATAAAATAAGATGGC
 TACATCACTAAAGAGGAAATGCTTGATATAATGAAAGCAATATACGATATGATGGGTAAATGTACATATC
 CTGTCTCAAAGAAGATGCTCCCAGACAACACGTTGAAACATTTTTTCAGAAAAATGGACAAAAATAAGA
 TGGGGTTGTTACCATAGATGAGTTCATTGAAAGCTGCCAAAAAGATGAAAACATAATGCGCTCCATGCAG
 CTCTTTGAAAATGTGATT

ACGCGTACGCGGCCGCTCGAGCAGAACTCATCTCAGAAGAGGATCTGGCAGCAAATGATATCCTGGATT
 ACAAGGATGACGACGATAAGGTTTAA


[View online »](#)

Protein Sequence: >RC211542 representing NM_147181
 Red=Cloning site Green=Tags(s)

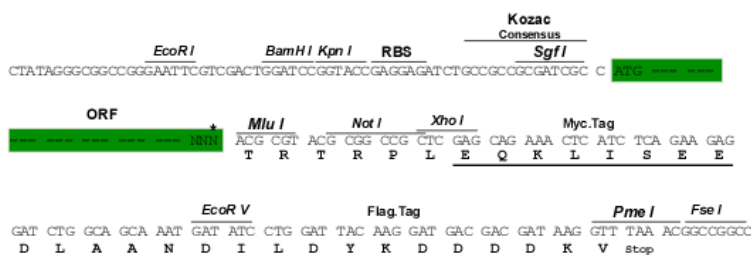
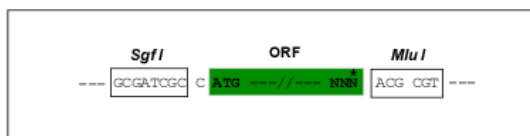
MNVRRVESISAQLEEASSTGDSVEDELEMATVRHRPEALELLEAQSKFTKKELQILYRGFKNECPSGVVN
 EETFKEIYSQFFPQGDSTTYAHFLFNAFDTDHNGAVSFEDFIKGLSILLRGTVQEKLNAWFNLVDINKDG
 YITKEEMLDIMKAIYDMMGKCTYPVLKEDAPRQHVETTFQKMDKNKDGVTIDEFIESCQDENIMRSMQ
 I FENV

TRTRPLEOKLISEEDLAANDILDYKDDDDKV

Restriction Sites: Sgfl-MluI

Cloning Scheme:

Cloning sites used for ORF Shuttling:



* The last codon before the Stop codon of the ORF

ACCN: NM 147181

ORF Size: 648 bp

OTI Disclaimer: The molecular sequence of this clone aligns with the gene accession number as a point of reference only. However, individual transcript sequences of the same gene can differ through naturally occurring variations (e.g. polymorphisms), each with its own valid existence. This clone is substantially in agreement with the reference, but a complete review of all prevailing variants is recommended prior to use. [More info](#)

OTI Annotation: This clone was engineered to express the complete ORF with an expression tag. Expression varies depending on the nature of the gene.

Components: The ORF clone is ion-exchange column purified and shipped in a 2D barcoded Matrix tube containing 10ug of transfection-ready, dried plasmid DNA (reconstitute with 100 ul of water).

Reconstitution Method:

1. Centrifuge at 5,000xg for 5min.
2. Carefully open the tube and add 100ul of sterile water to dissolve the DNA.
3. Close the tube and incubate for 10 minutes at room temperature.
4. Briefly vortex the tube and then do a quick spin (less than 5000xg) to concentrate the liquid at the bottom.
5. Store the suspended plasmid at -20°C. The DNA is stable for at least one year from date of shipping when stored at -20°C.

RefSeq: [NM_147181.3](#), [NP_671710.1](#)

RefSeq Size: 2259 bp

RefSeq ORF: 651 bp

Locus ID: 80333

UniProt ID: [Q6PIL6](#)

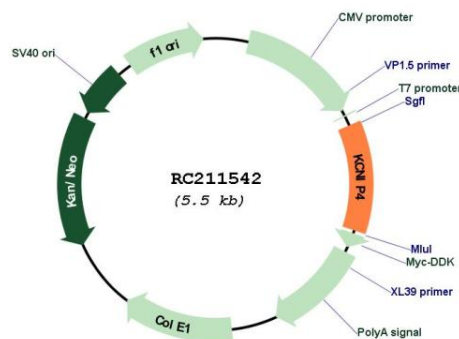
Cytogenetics: 4p15.31-p15.2

Protein Families: Druggable Genome, Ion Channels: Other

MW: 24.8 kDa

Gene Summary: This gene encodes a member of the family of voltage-gated potassium (Kv) channel-interacting proteins (KCNIPs), which belong to the recoverin branch of the EF-hand superfamily. Members of the KCNIP family are small calcium binding proteins. They all have EF-hand-like domains, and differ from each other in the N-terminus. They are integral subunit components of native Kv4 channel complexes. They may regulate A-type currents, and hence neuronal excitability, in response to changes in intracellular calcium. This protein member also interacts with presenilin. Multiple alternatively spliced transcript variants encoding distinct isoforms have been identified for this gene. [provided by RefSeq, Jul 2008]

Product images:



Circular map for RC211542