

## Product datasheet for RC211540

### MTCP1 (NM\_014221) Human Tagged ORF Clone

#### Product data:

**Product Type:** Expression Plasmids  
**Product Name:** MTCP1 (NM\_014221) Human Tagged ORF Clone  
**Tag:** Myc-DDK  
**Symbol:** MTCP1  
**Synonyms:** C6.1B; mature T-cell proliferation 1; OTTHUMP00000015489; OTTHUMP00000015491; OTTHUMP00000015492; OTTHUMP00000024241; OTTHUMP00000082776; P13MTCP1  
**Mammalian Cell Selection:** Neomycin  
**Vector:** pCMV6-Entry (PS100001)  
**E. coli Selection:** Kanamycin (25 ug/mL)  
**ORF Nucleotide Sequence:** >RC211540 representing NM\_014221  
 Red=Cloning site Blue=ORF Green=Tags(s)

TTTTGTAATACGACTCACTATAGGGCGGCCGGAATTCGTCGACTGGATCCGGTACCGAGGAGATCTGCC  
 GCCGCGATCGCC

ATGCCGCAGAAGGATCCGTGCCAGAAGCAAGCCTGTGAGATACAGAAATGTTTACAAGCCAACAGCTACA  
 TGGAAATCAAAGTGTGAGGCTGTATCCAAGAACTGCGTAAGTGTGTGCTCAGTATCCCAAGGGAAGATC  
 TGTGCTGTGTTGAGGATTTGAAAAAGAAGAGGAAGAAAACCTAACACGGAAGTCTGCATCAAAG

ACGCGTACGCGGCCGCTCGAGCAGAACTCATCTCAGAAGAGGATCTGGCAGCAAATGATATCCTGGATT  
 ACAAGGATGACGACGATAAGGTTTAA

**Protein Sequence:** >RC211540 representing NM\_014221  
 Red=Cloning site Green=Tags(s)

MPQKDPQCQKQACEIQKCLQANSYMEKQAVIQELRKCCAQYPKGRSVVCSGFEKEEEEEENLTRKSASK

TRTRPLEQKLISEEDLAANDILDYKDDDDKV

**Chromatograms:** [https://cdn.origene.com/chromatograms/mk6681\\_a03.zip](https://cdn.origene.com/chromatograms/mk6681_a03.zip)

**Restriction Sites:** Sgfl-MluI



[View online »](#)

**Cloning Scheme:**


**ACCN:** NM\_014221

**ORF Size:** 204 bp

**OTI Disclaimer:** The molecular sequence of this clone aligns with the gene accession number as a point of reference only. However, individual transcript sequences of the same gene can differ through naturally occurring variations (e.g. polymorphisms), each with its own valid existence. This clone is substantially in agreement with the reference, but a complete review of all prevailing variants is recommended prior to use. [More info](#)

**OTI Annotation:** This clone was engineered to express the complete ORF with an expression tag. Expression varies depending on the nature of the gene.

**Components:** The ORF clone is ion-exchange column purified and shipped in a 2D barcoded Matrix tube containing 10ug of transfection-ready, dried plasmid DNA (reconstitute with 100 ul of water).

- Reconstitution Method:**
1. Centrifuge at 5,000xg for 5min.
  2. Carefully open the tube and add 100ul of sterile water to dissolve the DNA.
  3. Close the tube and incubate for 10 minutes at room temperature.
  4. Briefly vortex the tube and then do a quick spin (less than 5000xg) to concentrate the liquid at the bottom.
  5. Store the suspended plasmid at -20°C. The DNA is stable for at least one year from date of shipping when stored at -20°C.

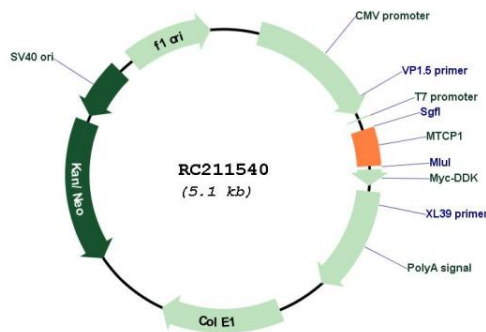
**RefSeq:** [NM\\_014221.3](#), [NP\\_055036.1](#)

**RefSeq Size:** 1943 bp

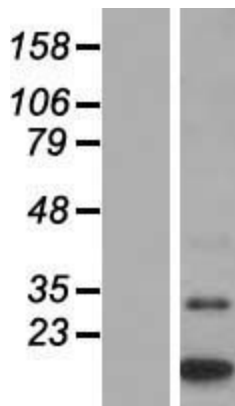
**RefSeq ORF:** 206 bp

**Locus ID:** 4515  
**Cytogenetics:** Xq28  
**Domains:** TCL1\_MTCP1  
**MW:** 7.6 kDa  
**Gene Summary:** This gene was identified by involvement in some t(X;14) translocations associated with mature T-cell proliferations. This region has a complex gene structure, with a common promoter and 5' exon spliced to two different sets of 3' exons that encode two different proteins. This gene represents the upstream 13 kDa protein that is a member of the TCL1 family. This protein may be involved in leukemogenesis. [provided by RefSeq, Mar 2009]

### Product images:



Circular map for RC211540



Western blot validation of overexpression lysate (Cat# [LY415436]) using anti-DDK antibody (Cat# [TA50011-100]). Left: Cell lysates from untransfected HEK293T cells; Right: Cell lysates from HEK293T cells transfected with RC211540 using transfection reagent MegaTran 2.0 (Cat# [TT210002]).