

Product datasheet for RC211537

COP (CARD16) (NM_052889) Human Tagged ORF Clone

Product data:

Product Type: Expression Plasmids
Product Name: COP (CARD16) (NM_052889) Human Tagged ORF Clone
Tag: Myc-DDK
Symbol: COP
Synonyms: COP; COP1; PSEUDO-ICE
Mammalian Cell Selection: Neomycin
Vector: pCMV6-Entry (PS100001)
E. coli Selection: Kanamycin (25 ug/mL)
ORF Nucleotide Sequence: >RC211537 representing NM_052889
Red=Cloning site Blue=ORF Green=Tags(s)

TTTTGTAATACGACTCACTATAGGGCGGCCGGAATTCGTCGACTGGATCCGGTACCGAGGAGATCTGCC
GCC**CGATCGCC**

ATGAGAAAAGCCATGGCCGACAAGGTCCTGAAGGAGAAGAGAAAGCTGTTTATCCATTCCATGGGTGAAG
GTACAATAAATGGCTTACTGGATGAATTATTACAGACAAGGGTGTGAACCAGGAAGAGATGGAGAAAGT
AAAACGTGAAAATGCTACAGTTATGGATAAGACCCGAGCTTTGATTGACTCCGTTATCCGAAAGGGCA
CAGGCATGCCAAATTTGCATCACATACATTTGTGAAGAAGACAGTTACCTGGCAGAGACGCTGGACTCT
CAGCAGGTCCGATACCTGAAAT

ACGCGTACGCGGCCGCTCGAGCAGAAACTCATCTCAGAAGAGGATCTGGCAGCAAATGATATCCTGGATT
ACAAGGATGACGACGATAAGGTTTAA

Protein Sequence: >RC211537 representing NM_052889
Red=Cloning site Green=Tags(s)
MRKAMADKVLKEKRKLF I HSMGEGTINGLLDELLQTRVLNQEEMEKVRENATVMDKTRALIDSVIPKGA
QACQICITYICEEDSYLAETLGLSAGPIPGN

TRTRPLEQKLI SEEDLAANDILDYKDDDDKV

Chromatograms: https://cdn.origene.com/chromatograms/mk6102_b11.zip

Restriction Sites: SgfI-MluI



[View online »](#)

Cloning Scheme:


ACCN: NM_052889

ORF Size: 303 bp

OTI Disclaimer: The molecular sequence of this clone aligns with the gene accession number as a point of reference only. However, individual transcript sequences of the same gene can differ through naturally occurring variations (e.g. polymorphisms), each with its own valid existence. This clone is substantially in agreement with the reference, but a complete review of all prevailing variants is recommended prior to use. [More info](#)

OTI Annotation: This clone was engineered to express the complete ORF with an expression tag. Expression varies depending on the nature of the gene.

Components: The ORF clone is ion-exchange column purified and shipped in a 2D barcoded Matrix tube containing 10ug of transfection-ready, dried plasmid DNA (reconstitute with 100 ul of water).

- Reconstitution Method:**
1. Centrifuge at 5,000xg for 5min.
 2. Carefully open the tube and add 100ul of sterile water to dissolve the DNA.
 3. Close the tube and incubate for 10 minutes at room temperature.
 4. Briefly vortex the tube and then do a quick spin (less than 5000xg) to concentrate the liquid at the bottom.
 5. Store the suspended plasmid at -20°C. The DNA is stable for at least one year from date of shipping when stored at -20°C.

RefSeq Size: 758 bp

RefSeq ORF: 294 bp

Locus ID: 114769

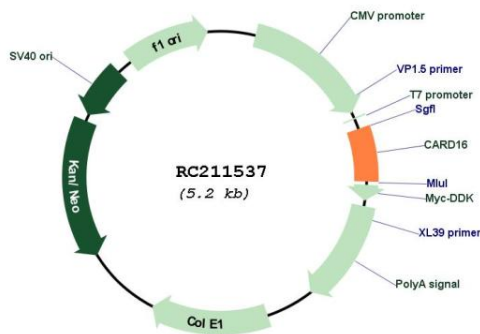
UniProt ID: [Q5EG05](#)

Cytogenetics: 11q22.3

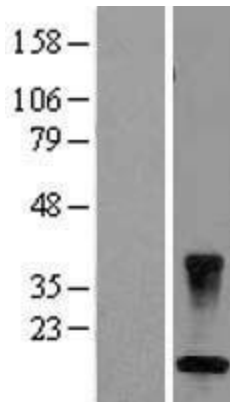
MW: 10.6 kDa

Gene Summary: Caspase inhibitor. Acts as a regulator of procaspase-1/CASP1 activation implicated in the regulation of the proteolytic maturation of pro-interleukin-1 beta (IL1B) and its release during inflammation. Inhibits the release of IL1B in response to LPS in monocytes. Also induces NF-kappa-B activation during the pro-inflammatory cytokine response. Also able to inhibit CASP1-mediated neuronal cell death, TNF-alpha, hypoxia-, UV-, and staurosporine-mediated cell death but not ER stress-mediated cell death. Acts by preventing activation of caspases CASP1 and CASP4, possibly by preventing the interaction between CASP1 and RIPK2. [UniProtKB/Swiss-Prot Function]

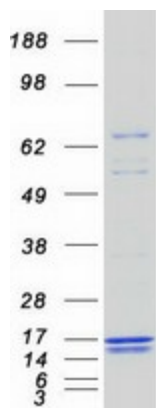
Product images:



Circular map for RC211537



Western blot validation of overexpression lysate (Cat# [LY409399]) using anti-DDK antibody (Cat# [TA50011-100]). Left: Cell lysates from untransfected HEK293T cells; Right: Cell lysates from HEK293T cells transfected with RC211537 using transfection reagent MegaTran 2.0 (Cat# [TT210002]).



Coomassie blue staining of purified CARD16 protein (Cat# [TP311537]). The protein was produced from HEK293T cells transfected with CARD16 cDNA clone (Cat# RC211537) using MegaTran 2.0 (Cat# [TT210002]).