

## Product datasheet for **RC211536**

### **CABP4 (NM\_145200) Human Tagged ORF Clone**

#### Product data:

**Product Type:** Expression Plasmids  
**Product Name:** CABP4 (NM\_145200) Human Tagged ORF Clone  
**Tag:** Myc-DDK  
**Symbol:** CABP4  
**Synonyms:** CRSD; CSNB2B  
**Mammalian Cell Selection:** Neomycin  
**Vector:** pCMV6-Entry (PS100001)  
**E. coli Selection:** Kanamycin (25 ug/mL)  
**ORF Nucleotide Sequence:** >RC211536 representing NM\_145200  
**Red=Cloning site Blue=ORF Green=Tags(s)**

TTTTGTAATACGACTCACTATAGGGCGGCCGGAATTCGTCGACTGGATCCGGTACCGAGGAGATCTGCC  
GCC**CGATCGCC**

ATGACCACAGAGCAGGCAAGGGGGCAGCAGGGCCCAAATCTGGCCATTGGCCGTCAGAAGCCCCCTGCGG  
GGGTTGTGACTCCCAAGAGTGATGCAGAGGAGCCCCGTTGACCAGGAAGAGGAGCAAGAAGGAGAGGGG  
GCTCCGAGGGTCTCGAAAGCGCACTGGCAGCTCTGGGGAGCAGACAGGCCCGAGCCCCGGGGAGCAGC  
AATAACCCTCCCAGCACTGGAGAGGGGCCGGGGCGCACCCCTGCATCCCCTGGGCCGGCCTCTTCTC  
GCCAGTCCCACCGACATCGTCTGACTCCCTGCACGACGCTGCTCAGAGGACATACGGGCCCTGCTCAA  
TCGAGTCTTCGGGAAGGACCGCGAACTGGGCCCGGAGGCTAGACGAGCTTACGGCCGCTTCGAGGAG  
TTTGACTGACCGTGACGGCTACATCAGCCACCGGGAGCTGGGTGACTGCATGCGGACCCCTGGGCTACA  
TGCCACCGAGATGGAGCTCCTGGAGGTCTCGCAGCACATCAAGATGCGCATGGGCGGCCGTGTGGACTT  
TGAGGAGTTTGTAGAAGTATAGGCCAAAGCTGAGGGAGGAGACGGCGCACATGCTGGGGTGGCAGAG  
CTGCGCATCGCCTTCGAGAGTTTGACAGGGACAGGGATGGACGAATTACGGTGGCGGAGCTGCGGGAGG  
CGGTACCGGCTCTGCTCGGGAGCCGCTGGCGGGTCTGAGCTGGACGAGATGCTCCGAGAAGTGGACCT  
CAATGGGGATGGACCGTAGACTTTGACGAGTTTGTGATGATGCTCTCCCGCCAC

**ACGCGTACGCGGCCGCTCGAGCAGAACTCATCTCAGAAGAGGATCTGGCAGCAAATGATATCCTGGATT**  
**ACAAGGATGACGACGATAAGGTTTAA**



[View online »](#)

**Protein Sequence:** >RC211536 representing NM\_145200  
 Red=Cloning site Green=Tags(s)

MTTEQARGQQGNLAIGRQKPPAGVVTPKSDAEEPPLTRKRSKKERGLRGSRKRTGSSGEQTGPEAPGSS  
 NNPPSTGEGPAGAPPASPGPASSRQSHRHRPDSLHDAQRTYGPLLNRFVFGKDRELGPPELDELQAAFEE  
 FDTDRDGYISHRELGDCMRTLGYMPTEMLLEVSQHIKMRMGGRVDFEEFVELIGPKLREETAHMLGVRE  
 LRIAFREFDRDRGRITVAELREAVPALLGEPLAGPELDEMLREVDLNGDGTVDVDFVVMLSRH

TRTRPLEQKLISEEDLAANDILDYKDDDDKV

**Chromatograms:** [https://cdn.origene.com/chromatograms/mk6173\\_g12.zip](https://cdn.origene.com/chromatograms/mk6173_g12.zip)

**Restriction Sites:** SgfI-MluI

**Cloning Scheme:**

Cloning sites used for ORF Shuttling:



\* The last codon before the Stop codon of the ORF

**ACCN:** NM\_145200

**ORF Size:** 825 bp

**OTI Disclaimer:** The molecular sequence of this clone aligns with the gene accession number as a point of reference only. However, individual transcript sequences of the same gene can differ through naturally occurring variations (e.g. polymorphisms), each with its own valid existence. This clone is substantially in agreement with the reference, but a complete review of all prevailing variants is recommended prior to use. [More info](#)

**OTI Annotation:** This clone was engineered to express the complete ORF with an expression tag. Expression varies depending on the nature of the gene.

**Components:** The ORF clone is ion-exchange column purified and shipped in a 2D barcoded Matrix tube containing 10ug of transfection-ready, dried plasmid DNA (reconstitute with 100 ul of water).

**Reconstitution Method:**

1. Centrifuge at 5,000xg for 5min.
2. Carefully open the tube and add 100ul of sterile water to dissolve the DNA.
3. Close the tube and incubate for 10 minutes at room temperature.
4. Briefly vortex the tube and then do a quick spin (less than 5000xg) to concentrate the liquid at the bottom.
5. Store the suspended plasmid at -20°C. The DNA is stable for at least one year from date of shipping when stored at -20°C.

**RefSeq:** [NM\\_145200.5](#)

**RefSeq Size:** 1466 bp

**RefSeq ORF:** 828 bp

**Locus ID:** 57010

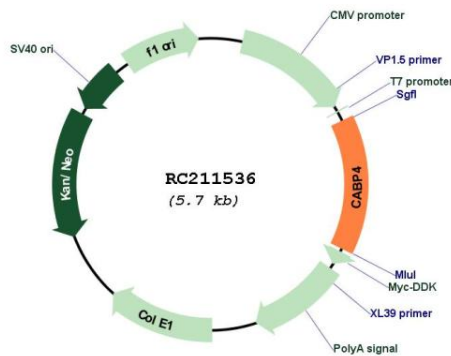
**UniProt ID:** [P57796](#)

**Cytogenetics:** 11q13.2

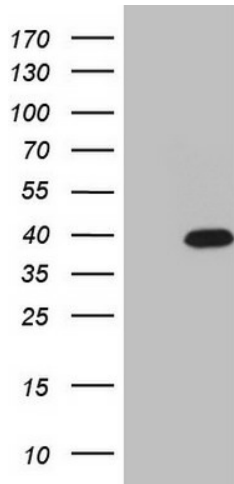
**MW:** 30.3 kDa

**Gene Summary:** This gene encodes a member of the CABP family of calcium binding protein characterized by four EF-hand motifs. Mutations in this gene are associated with congenital stationary night blindness type 2B. Three transcript variants encoding two different isoforms have been found for this gene. [provided by RefSeq, Jul 2014]

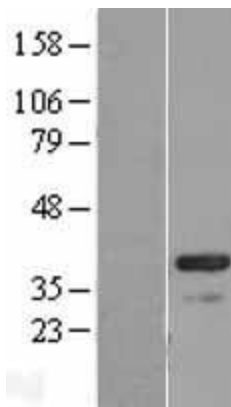
### Product images:



Circular map for RC211536



HEK293T cells were transfected with the pCMV6-ENTRY control (Cat# [PS100001], Left lane) or pCMV6-ENTRY CABP4 (Cat# RC211536, Right lane) cDNA for 48 hrs and lysed. Equivalent amounts of cell lysates (5 ug per lane) were separated by SDS-PAGE and immunoblotted with anti-CABP4 (Cat# [TA808713])(1:500). Positive lysates [LY403429] (100ug) and [LC403429] (20ug) can be purchased separately from OriGene.



Western blot validation of overexpression lysate (Cat# [LY403429]) using anti-DDK antibody (Cat# [TA50011-100]). Left: Cell lysates from untransfected HEK293T cells; Right: Cell lysates from HEK293T cells transfected with RC211536 using transfection reagent MegaTran 2.0 (Cat# [TT210002]).



Coomassie blue staining of purified CABP4 protein (Cat# [TP311536]). The protein was produced from HEK293T cells transfected with CABP4 cDNA clone (Cat# RC211536) using MegaTran 2.0 (Cat# [TT210002]).