

## Product datasheet for **RC211535**

### SGK3 (NM\_170709) Human Tagged ORF Clone

#### Product data:

Product Type:	Expression Plasmids
Product Name:	SGK3 (NM_170709) Human Tagged ORF Clone
Tag:	Myc-DDK
Symbol:	SGK3
Synonyms:	CISK; SGK2; SGKL
Mammalian Cell Selection:	Neomycin
Vector:	pCMV6-Entry (PS100001)
E. coli Selection:	Kanamycin (25 ug/mL)



[View online »](#)

**ORF Nucleotide Sequence:**

>RC211535 representing NM\_170709  
 Red=Cloning site Blue=ORF Green=Tags(s)

TTTTGTAATACGACTCACTATAGGGCGGCCGGGAATTCGTCGACTGGATCCGGTACCGAGGAGATCTGCC  
 GCC**CGCATCGCC**

ATGCAAGAGATCACACCATGGACTACAAGGAAAGCTGCCCAAGTGAAGCATTCCAGCTCCGATGAAC  
 ACAGAGAGAAAAAGAAGAGGTTTACTGTTTATAAAGTTCTGGTTTCAGTGGGAAGAAGTGAATGGTTTGT  
 CTTCAGGAGATATGCAGAGTTTGATAAACTTTATAACACTTTAAAAAACAGTTTCTGCTATGGCCCTG  
 AAGATTCTGCCAAGAGAATATTTGGTGATAATTTTATCCAGATTTTATAAACAAAGACGAGCAGGAC  
 TAAACGAATTCATTACAGAACCTAGTTAGGTATCCAGAATTTATAACCATCCAGATGTCAGAGCATTCT  
 TCAATGGACAGTCCAAAACACCACTGAGATCCATCTGAAGATGAGGATGAAAGAAGTTCTCAGAAGCTA  
 CACTCTACCTCACAGAACATCACTGGGACCGTCTGGAAATCCTCATGCCAAACCACTGACTTTGATT  
 TCTTAAAAGTTATTGGAAAAGGCAGCTTTGGCAAGTTCTTCTTGCAAAACGGAACTGGATGGAAAATT  
 TTATGCTGTCAAAGTGTACAGAAAAAATAGTTCTCAACAGAAAAGAGCAAAAACATATTATGGCTGAA  
 CGTAATGTGCTCTTGAAAATGTGAAACATCCGTTTTTGGTTGGATTGCATTATTCCTTCCAAACAACCTG  
 AAAAGCTTTATTTGTTCTGGATTTTGTAAATGGAGGGGAGCTTTTTTCCACTTACAAAGAGAACGGTC  
 CTTTCTGAGCACAGAGCTAGGTTTTACGCTGCTGAAATTGCTAGTGCATTGGGTTACTTACATTCCATC  
 AAAATAGTATACAGAGACTTGAAACCAGAAAATATTCTTTGGATTACAGTAGGACATGTTGTCTTAACAG  
 ATTTTGGGCTTTGTAAGAAGGAATTGCTATTTCTGACACCACTACCACATTTTGTGGGACACCAGAGCC  
 TCCTTTTATTGCCGAGATGTTGCTGAAATGTATGACAATATCCTTCACAAACCCCTAAGTTTGGAGCCA  
 GGAGTGAGTCTTACAGCCTGGTCCATTTGGAAGAATCCTAGAAAAGACAGGCAAAAATCGACTTGGTG  
 CCAAGGAAGACTTTCTTGAATTCAGAATCCTTTTTTTGAATCACTCAGCTGGGCTGACCTTGTACA  
 AAAGAAGATTCCACCACCATTTAATCCTAATGTGGCTGGACCAGATGATATCAGAAAACCTTGACACAGCA  
 TTTACAGAAAGAACAGTCCATATTCTGTGTGTATCTTCTGACTATTCTATAGTGAATGCCAGTGTAT  
 TGGAGGCAGATGATGCATTCTGGTTTCTCTTATGCACCTCCTCAGAAGACTTATTTTTG

**ACGCGT**ACGCGGCCGCTCGAGCAGAACTCATCTCAGAAGAGGATCTGGCAGCAAATGATATCCTGGATT  
 ACAAGGATGACGACGATAAGGTTTAA

**Protein Sequence:**

>RC211535 representing NM\_170709  
 Red=Cloning site Green=Tags(s)

MQRDHTMDYKESCPVSIPSSDEHREKKKRFVYKVLVSVGRSEWFVFRRYAEFDKLYNTLKKQFPAMAL  
 KIPAKRIFGDNFDPDFIKQRRAGLNEFIQNLVRYPELYNHPDVRAFLQMDSPKHQSDPSEDEDERSSQKL  
 HSTSQNINLGPSPGNPHAKPTDFDFLKVIGKGSFGKVLAKRKLKGKFYAVKVLQKKIVLNRKEQKHIMAE  
 RNVLLKNVKHPFLVGLHYSFQTTEKLYFVLDVNGGELFFHLQRERSFPEHRARFYAAEIASALGYLHSI  
 KIVYRDLKPENILLDSVGHVVLTDGFLCKEGIAISDTTTTFCGTPEPPFYCRDVAEMYDNILHKPLSLRP  
 GVSLTAWISILEELLEKDRQNLGAKEDFLEIQNHPPFESLSWADLVQKKIPPPFNPVAGPDDIRNFDTA  
 FTEETVPYSVCVSSDYSIVNASVLEADDAFVGFSYAPPSDFL

**TR**TRPLEQKLISEEDLAANDILDYKDDDDKV

**Chromatograms:**

[https://cdn.origene.com/chromatograms/mg4413\\_a01.zip](https://cdn.origene.com/chromatograms/mg4413_a01.zip)

**Restriction Sites:**

Sgfl-Mlul

**Cloning Scheme:**


**ACCN:** NM\_170709

**ORF Size:** 1392 bp

**OTI Disclaimer:** The molecular sequence of this clone aligns with the gene accession number as a point of reference only. However, individual transcript sequences of the same gene can differ through naturally occurring variations (e.g. polymorphisms), each with its own valid existence. This clone is substantially in agreement with the reference, but a complete review of all prevailing variants is recommended prior to use. [More info](#)

**OTI Annotation:** This clone was engineered to express the complete ORF with an expression tag. Expression varies depending on the nature of the gene.

**Components:** The ORF clone is ion-exchange column purified and shipped in a 2D barcoded Matrix tube containing 10ug of transfection-ready, dried plasmid DNA (reconstitute with 100 ul of water).

**Reconstitution Method:**

1. Centrifuge at 5,000xg for 5min.
2. Carefully open the tube and add 100ul of sterile water to dissolve the DNA.
3. Close the tube and incubate for 10 minutes at room temperature.
4. Briefly vortex the tube and then do a quick spin (less than 5000xg) to concentrate the liquid at the bottom.
5. Store the suspended plasmid at -20°C. The DNA is stable for at least one year from date of shipping when stored at -20°C.

**RefSeq:** [NM\\_170709.3](#)

**RefSeq Size:** 4059 bp

**RefSeq ORF:** 1395 bp

**Locus ID:** 23678

**UniProt ID:** [Q96BR1](#)

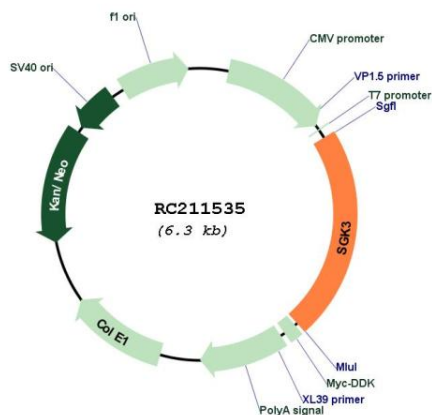
**Cytogenetics:** 8q13.1

**Protein Families:** Druggable Genome, Protein Kinase

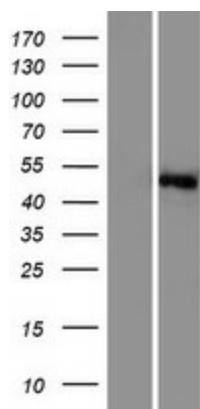
**MW:** 53.1 kDa

**Gene Summary:** This gene is a member of the Ser/Thr protein kinase family and encodes a phosphoprotein with a PX (phox homology) domain. The protein phosphorylates several target proteins and has a role in neutral amino acid transport and activation of potassium and chloride channels. Alternate transcriptional splice variants, encoding different isoforms, have been characterized. [provided by RefSeq, Jul 2008]

**Product images:**



Circular map for RC211535



Western blot validation of overexpression lysate (Cat# [LY406888]) using anti-DDK antibody (Cat# [TA50011-100]). Left: Cell lysates from untransfected HEK293T cells; Right: Cell lysates from HEK293T cells transfected with RC211535 using transfection reagent MegaTran 2.0 (Cat# [TT210002]).