

Product datasheet for **RC211533**

SLCO4C1 (NM_180991) Human Tagged ORF Clone

Product data:

Product Type:	Expression Plasmids
Product Name:	SLCO4C1 (NM_180991) Human Tagged ORF Clone
Tag:	Myc-DDK
Symbol:	SLCO4C1
Synonyms:	OATP-H; OATP-M1; OATP4C1; OATPX; PRO2176; SLC21A20
Mammalian Cell Selection:	Neomycin
Vector:	pCMV6-Entry (PS100001)
E. coli Selection:	Kanamycin (25 ug/mL)



[View online »](#)

ORF Nucleotide Sequence:

>RC211533 representing NM_180991
 Red=Cloning site Blue=ORF Green=Tags(s)

TTTTGTAATACGACTCACTATAGGGCGGCCGGAATTCGTCGACTGGATCCGGTACCGAGGAGATCTGCC
 GCC**CGCATCGCC**

ATGAAGAGCGCCAAAGGTATTGAGAACTTGGCTTTTGTCCCTCCAGCCCAGACATCCTGCGCCGCTTGT
 CTGCGTCGCCCTCCCAAATCGAAGTCTCTGCCTTGTCTCTGACCCCAAAGAGAGAATTCTCAGCCACA
 GGAGCTTCAGAAGCCCCAGGAGCCCCAGAAGTACCAGAGCCATCTCTGCCTTCAGCCCCCTCCAAATGTC
 TCCGAAGAGAAGCTCCGGTCACTGTGCTGTCCGAGTTTGAGGAGGGGTCTTACGGCTGGAGGAACTTCC
 ATCCTCAATGTCTCCAGCGCTGCAACACACCTGGAGGCTTTCTGCTTCACTACTGCCTCTTGGCCGTAC
 GCAAGGTATTGTAGTTAATGGCCTAGTAAATATTAGCATTTCCTGTTGAGAAGCGTTATGAAATGAAG
 AGTTCCCTGACTGGCCTGATTTCACTCAAGCTACGATATTTCACTTGTGTTGTTGCTTTATTTGTATCAT
 TCTTTGGTGAAAGAGGACATAAGCCGAGATGGCTTGCATTTGCAGCCTTTATGATTGGACTGGGAGCACT
 TGTATTCTCATTGCCACAATTTTCAGTGGAGAATATAAATTTGGGGTCTCTTTTTGAAGACACTTGTGTA
 ACAACAAGGAATAGCACCAGTTGTACATCTTCACTTCTTCACTTCTAACTACTTGTATGTCTTCACT
 TGGGACAACACTATTGCTGGGGCAGGAGGAACCTCTTTATACTCTGGGAACAGCCTTTCTTGTATGATTC
 TGTGCCACACACAAGTCTTCTCTATATAGGAACCGTTATGCTATGTCAATCTTAGGCCCTGTATT
 GGCTATGTATTGGGAGGACAACCTGTAACCATATACATTGATGTTGCTATGGGAGAAAGCACTGATGTCA
 CTGAGGATGATCCGCGATGGTTGGGAGCTTGGTGGATTGGGTTTCTTCTATCATGGATCTTTGCTTGGTC
 TTTAATAATACCTTTTCTTGTCTTCCAAAACATTTACCAGGTACAGCAGAAATCAAGCTGGAAAACT
 TCCAGGCTCATCAGAGTAATAGTAATGCAGATGTGAAATTTGGAAAAAGTATTAAGATTTTCCAGCTG
 CTCTAAAGAATTTGATGAAGAATGCTGCTTTATGTGTTAGTTCTCAACTTCTCAGAAGCCTTAAT
 TACTACTGGATTTGCTACATTTTTACCTAAATTTATAGAAAATCAATTCGGATTGACATCCAGCTTCGCA
 GCTACTCTGGAGGGCTGTTTTAATTCCTGGAGCTGCTCTCGGTCAAATTTTAGGTGGCTTCTTGT
 CAAAATTCAGAATGACATGTA AAAACACAATGAAGTTTGCCTGTTTACATCTGGAGTTGCACCTACGCT
 GAGTTTTGTATTTATGTATGCCAAATGTGAAAATGAGCCATTTGCTGGTGTATCTGAATCATATAATGGG
 ACTGGAGAATTGGGAACTTGTAGCCCCTTGAATGCCAATTTGCTGGTGTATCTGAATCATATAATGGG
 CTGTCTGTGGAGATGGAGTCCAATTTTTCTCCCTGCTTGCAGGCTGTTCAAACCCAGTTGCACACAG
 GAAGCCAAAGGTATATTACAACCTTCTGTATTGAAAGGAAAACAGAAATAACATCCACTGCAGAACT
 TTTGGTTTTGAAGCTAAAGCTGGAAAATGTGAACTCATTGTGCGAACTGCCCATATTCCTTTGCATTT
 TCTTTATTGTAATTTTTTACCTTTATGGCCGCTACTCTATAACTGTGTCTATCCTAAGGTGTGTAA
 TCACAGACAACGGTCCCTAGCCTTGGGAATACAATTTATGGTCCTTCGATTATTAGGGACAATTCCTGGA
 CCAATTATATTTGGTTTCAATAGACAGCACATGTATTCTTTGGGATATAAATGATTGTGGAATTAAGG
 GAGCTTGTGGATTTATGATAACATCAAGATGGCCCATAGCTAGTAGCCATAAGTGTACTTGTAAAGT
 TATCACCATGTTCTTCAATGGATTTGCAATCTTTTTGTATAAACCACCTCCATCAGCCACAGATGTGTCA
 TTTCATAAAGAGAATGCAGTTGTGACTAATGTTTTAGCAGAACAGGATCTCAACAAAATAGTAAAAGAAG
 GG

ACGCGTACGCGGCCGCTCGAGCAGAACTCATCTCAGAAGAGGATCTGGCAGCAAATGATATCCTGGATT
 ACAAGGATGACGACGATAAGGTTTAA

Protein Sequence: >RC211533 representing NM_180991
Red=Cloning site Green=Tags(s)

MKSAKGIENLAFVPPSPDILRRLSASPSQIEVSALSSDPQRENSQPQELQKPQEPQKSPEPSLPSAPPNV
 SEEKLRSLSLSEFEESYGWRNFHPQCLQRCNTPGGFLLHYCLLAVTQGI VVNGLVNISISTVEKRYEMK
 SSLTGLISSSYDISFCLLSL FVFFGERGHKPRWLAFAAFMI GLGALVFLPQFFSGEYKLGSLFEDTCV
 TTRNSTSCTSSSTSSL SNLYVYF ILGQ LLLGAGGTPLYTLGT AFLDSDVPTHKSSLYIGTGYAMSILGPAI
 GYVLGGQLLTIYIDVAMGESTDVTEDDPRWLGAWWIGFLLSWIFAWSLIIPFSCFPKHLPGTAEIQAGKT
 SQAHQSNADVKFGKSIKDFPAALKNLMKNAVFMCLVLSSTSEALITTFATFLPKFIENQFGLTSSFA
 ATLGGA VLIPGAALGQILGGFLVSKFRMTCKNTMKFALFTSGVALT LSFVFMYAKCENEPFAGVSESYNG
 TGELGNLIAPCNANCNCSRSYYYPVCGDGVQYFSPCFAGCSNPVAHRKPKVYYNCSCIERKTEITSTAET
 FGFEAKAGKCETHCAKLP IFLC IFFIVIIFFTFMAGTPITVSILRCVNHQRSLALGIQFVMLRLLGTIPG
 PIIFGFTIDSTCILWDINDCGIKGACWIYDNIKMAHMLVAISVTCKVITMFFNGFAIFLYKPPPSATDVS
 FHKENAVVTNVLAEQDLNKIVKEG

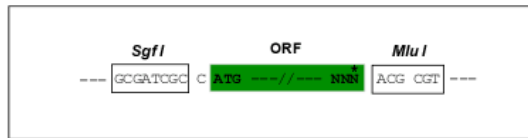
TRTRPLEQKLI SEEDLAANDILDYKDDDDKV

Chromatograms: https://cdn.origene.com/chromatograms/mk6164_e08.zip

Restriction Sites: Sgfl-MluI

Cloning Scheme:

Cloning sites used for ORF Shuttling:



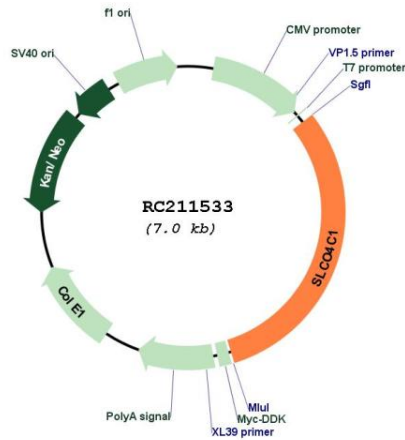
* The last codon before the Stop codon of the ORF

ACCN: NM_180991

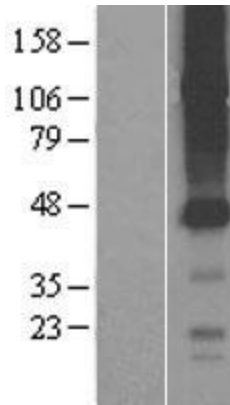
ORF Size: 2172 bp

OTI Disclaimer:	<p>Due to the inherent nature of this plasmid, standard methods to replicate additional amounts of DNA in E. coli are highly likely to result in mutations and/or rearrangements. Therefore, OriGene does not guarantee the capability to replicate this plasmid DNA. Additional amounts of DNA can be purchased from OriGene with batch-specific, full-sequence verification at a reduced cost. Please contact our customer care team at custsupport@origene.com or by calling 301.340.3188 option 3 for pricing and delivery.</p> <p>The molecular sequence of this clone aligns with the gene accession number as a point of reference only. However, individual transcript sequences of the same gene can differ through naturally occurring variations (e.g. polymorphisms), each with its own valid existence. This clone is substantially in agreement with the reference, but a complete review of all prevailing variants is recommended prior to use. More info</p>
OTI Annotation:	<p>This clone was engineered to express the complete ORF with an expression tag. Expression varies depending on the nature of the gene.</p>
Components:	<p>The ORF clone is ion-exchange column purified and shipped in a 2D barcoded Matrix tube containing 10ug of transfection-ready, dried plasmid DNA (reconstitute with 100 ul of water).</p>
Reconstitution Method:	<ol style="list-style-type: none">1. Centrifuge at 5,000xg for 5min.2. Carefully open the tube and add 100ul of sterile water to dissolve the DNA.3. Close the tube and incubate for 10 minutes at room temperature.4. Briefly vortex the tube and then do a quick spin (less than 5000xg) to concentrate the liquid at the bottom.5. Store the suspended plasmid at -20°C. The DNA is stable for at least one year from date of shipping when stored at -20°C.
RefSeq:	NM_180991.5
RefSeq Size:	5334 bp
RefSeq ORF:	2175 bp
Locus ID:	353189
UniProt ID:	Q6ZQN7
Cytogenetics:	5q21.1
Protein Families:	Transmembrane
MW:	78.8 kDa
Gene Summary:	<p>SLCO4C1 belongs to the organic anion transporter (OATP) family. OATPs are involved in the membrane transport of bile acids, conjugated steroids, thyroid hormone, eicosanoids, peptides, and numerous drugs in many tissues (Mikkaichi et al., 2004 [PubMed 14993604]). [supplied by OMIM, Mar 2008]</p>

Product images:



Circular map for RC211533



Western blot validation of overexpression lysate (Cat# [LY403616]) using anti-DDK antibody (Cat# [TA50011-100]). Left: Cell lysates from untransfected HEK293T cells; Right: Cell lysates from HEK293T cells transfected with RC211533 using transfection reagent MegaTran 2.0 (Cat# [TT210002]).