

## Product datasheet for **RC211532**

### **AIFM3 (NM\_144704) Human Tagged ORF Clone**

#### **Product data:**

Product Type:	Expression Plasmids
Product Name:	AIFM3 (NM_144704) Human Tagged ORF Clone
Tag:	Myc-DDK
Symbol:	AIFM3
Synonyms:	AIFL
Mammalian Cell Selection:	Neomycin
Vector:	pCMV6-Entry (PS100001)
E. coli Selection:	Kanamycin (25 ug/mL)



[View online »](#)

**ORF Nucleotide Sequence:**

>RC211532 representing NM\_144704  
 Red=Cloning site Blue=ORF Green=Tags(s)

TTTTGTAATACGACTCACTATAGGGCGGCCGGGAATTCGTCGACTGGATCCGGTACCGAGGAGATCTGCC  
 GCC**CGCATCGCC**

ATGGGCGGCTGCTTCTCAAACCCAAACCAGTGGAGCTCAAGATCGAGGTGGTGTCTGCCTGAGAAGGAGC  
 GAGGCAAGGAGGAGCTGTCGGCCAGTGGGAAGGGCAGCCCCGGGCTACCGAGGCAATGGCACGGCCCG  
 CCACTTCCACACGAGGAGCGCCTGTCCACCCCTCACCCCTACCCAGCCCTCAGGATTGCGTGGAGGCT  
 GCTGTCTGCCACGTCAAGGACCTCGAGAATGGCCAGATGCGGGAAGTGGAGCTGGGCTGGGGGAAGGTGT  
 TGCTGGTGAAGGACAATGGGGAGTTCCACGCCCTGGGCCATAAGTGTCCGCACTACGGCGCACCCCTGGT  
 GAAAGGCGTTCTGTCCCCTGGTGGGTGCGCTGCCCTGGCACGGCGCTGCTTCAACATCAGCACTGGG  
 GACCTGGAGGACTTCCCTGGCTGGACAGTCTACACAAGTTCAGGTGAAGATTGAGAAGGAGAAGGTGT  
 ACGTCCGGCCAGCAAGCAGGCCCTACAGCTGCAGCGAAGGACCAAGGTGATGGCCAAGTGTATCTCTCC  
 AAGTGTGGGTACAGCAGTAGCACCAATGTGCTCATTGTGGTGCAGGTGCAGCTGGCCTGGTGTGTGCA  
 GAGACTGCGGCAAGGAGGGCTTCTCCGACCGGATCGTCTGTGCACGCTAGACCGGCACCTTCCCTACG  
 ACCGTCCCAAGCTCAGCAAGTCCCTGGACACACAGCCTGAGCAGCTGGCCCTGAGGCCAAAGGAGTTTTT  
 CCGAGCCTATGGCATCGAGGTGCTCACCGAGGCTCAGGTGGTACAGTGGACGTGAGAACTAAGAAGGTC  
 GTGTTCAAGGATGGCTTCAAGCTGGAGTACAGCAAGCTGCTGCTGGCACCAGGGAGCAGCCCAAGACTC  
 TGAGCTGCAAAGGCAAAGAAGTGGAGAAGCTGTTCACTATCCGGACGCCAGAGGATGCCAATCGCGTGGT  
 GAGGCTGGCCCGAGGCCCAACGTGGTTCGTGCTGGGAGCCGGCTTCTGGGGATGGAGGTGGCCGCTTAC  
 CTGACGGAGAAGGCCACTCTGTGTCTGTGGTGGAGCTGGAGGAGACGCCCTTCAAGAGGTTCTCTGGGG  
 AGCGCTGGGTGCTGCCCTCATGAAGATGTTTGAAGAACAACCGGTGAAGTTCTACATCGACAGGAGGT  
 GTCTGAGCTGCGGGGCCAGGAGGGAAGCTGAAGGAGTTGTGCTGAAGAGCAGCAAGGTGCTGCGGGCT  
 GACGTCTGCGTGGTGGGATTGGTGCAGTGCCTGCCACAGGCTTCTGAGGCAAAGCGGCATCGGTTTGG  
 ATCCCGAGGCTTCACTCCTGTCAACAAGATGATGCAGACCAATGTCCCAGGCGTGTTCAGCTGGCGA  
 TGCTGTACCTTCCCCTTGCCTGGAGGAACAACCGCAAAGTGAACATTCACATTGGCAGATGGCTCAT  
 GCTCAGGGGCGCTGGCAGCCAGAACATGTTGGCGCAGGAGGCGGAGATGAGCACTGTGCCCTACCTCT  
 GGACCGCATGTTTGGCAAGAGCCTGCGCTACGCGGGCTACGGAGAAGGCTTCGACGACGTATCATCCA  
 GGGGATCTGGAGGAGCTGAAGTTTGTGGCTTTTACACTAAAGGCGACGAGGTGATCGCGTGGCCAGC  
 ATGAACTACGATCCATTGTGTCCAAGGTGCTGAGGTGCTGGCCTCAGGCCGTGCCATCCGGAAGCGGG  
 AGGTGGAGCTGTTGTGCTGCACAGCAAGACTGGCGACATGTCTGGCTTACGGGAAAGGATCC

**ACGCGT**ACGCGGCCGCTCGAGCAGAAACTCATCTCAGAAGAGGATCTGGCAGCAAATGATATCCTGGATT  
 ACAAGGATGACGACGATAAGGTTTAA

**Protein Sequence:**

>RC211532 representing NM\_144704  
 Red=Cloning site Green=Tags(s)

MGGCFSKPKPVELKIEVVLPEKERGKEEL SASGKGS PRAYQGNGTARHFHTEERLSTPHYPSPQDCVEA  
 AVCHVKDLENGQMREVELGWGKVLVKDNGEFHALGHKCPHYGAPLVKGVLSRGRVRCPPWHGACFNISTG  
 DLEDFPGLDSLHKFQVKIEKEKVYVRASKQALQLQRRTKVMACISPSAGYSSSTNVLIVGAGAAGLVCA  
 ETLRQEGFSDRIVLCTLRHLPYDRPKLSKSLDTQPEQLALRPKEFFRAYGIEVLTEAQVTVDRTKKV  
 VFKDGFKLEYSKLLLAPGSSPKTLSCKGKEVENVFTIRTPEDANRVVRLARGRNVVVVGAGFLGMEVAAY  
 LTEKAHSVSVVELEETPFRRFLGERVGRALMKMFENNRVKFYMQTEVSELRGQEGKLKEVVLKSSKVVRA  
 DVCVVGIGAVPATGFLRQSGIGLDSRGFIPVNMQMOTNVPGVFAAGDAVTFPLAWRNNRKVNIPHWQMAH  
 AQGRVAAQNMLAQEAEMSTVPYLWTAMFGKSLRYAGYGEFDDVVIQGDLEELKFVAFYTKGDEIVAVAS  
 MNYDPIVSKVAEVLASGRAIRKREVELFVLHSKTGDMSWLTGKGS

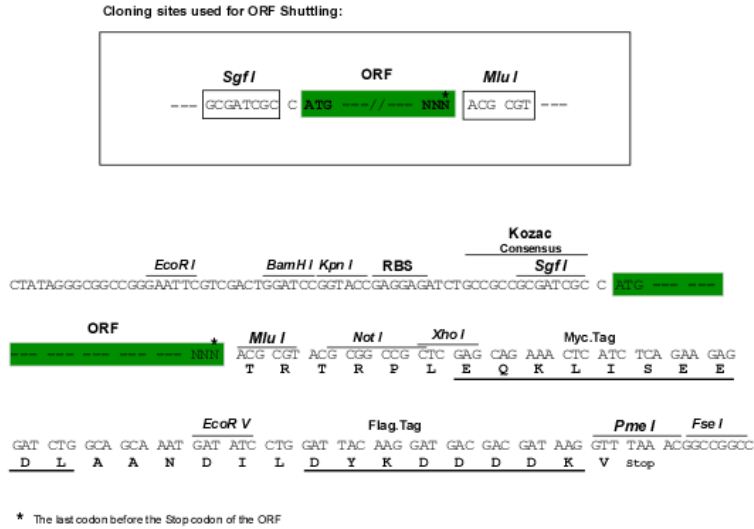
**TR**TRPLEQKLISEEDLAANDILDYKDDDDKV

**Chromatograms:**

[https://cdn.origene.com/chromatograms/mk8069\\_d09.zip](https://cdn.origene.com/chromatograms/mk8069_d09.zip)

Restriction Sites: SgfI-MluI

Cloning Scheme:



ACCN: NM\_144704

ORF Size: 1815 bp

OTI Disclaimer: The molecular sequence of this clone aligns with the gene accession number as a point of reference only. However, individual transcript sequences of the same gene can differ through naturally occurring variations (e.g. polymorphisms), each with its own valid existence. This clone is substantially in agreement with the reference, but a complete review of all prevailing variants is recommended prior to use. [More info](#)

OTI Annotation: This clone was engineered to express the complete ORF with an expression tag. Expression varies depending on the nature of the gene.

Components: The ORF clone is ion-exchange column purified and shipped in a 2D barcoded Matrix tube containing 10ug of transfection-ready, dried plasmid DNA (reconstitute with 100 ul of water).

- Reconstitution Method:
1. Centrifuge at 5,000xg for 5min.
  2. Carefully open the tube and add 100ul of sterile water to dissolve the DNA.
  3. Close the tube and incubate for 10 minutes at room temperature.
  4. Briefly vortex the tube and then do a quick spin (less than 5000xg) to concentrate the liquid at the bottom.
  5. Store the suspended plasmid at -20°C. The DNA is stable for at least one year from date of shipping when stored at -20°C.

RefSeq: [NM\\_144704.3](#)

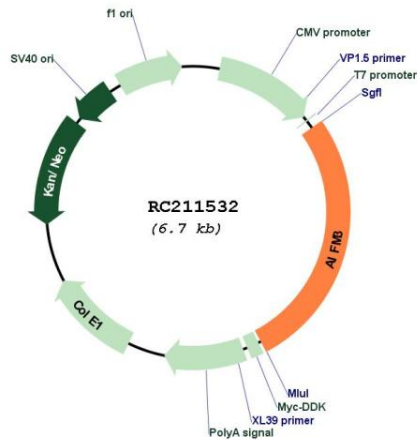
RefSeq Size: 2349 bp

RefSeq ORF: 1818 bp

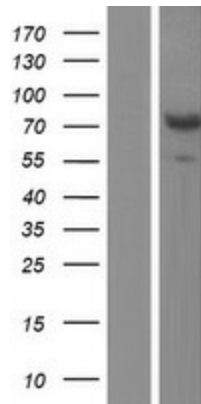
Locus ID: 150209

**UniProt ID:** [Q96NN9](#)  
**Cytogenetics:** 22q11.21  
**Domains:** pyr\_redox, Rieske  
**Protein Families:** Druggable Genome  
**MW:** 66.6 kDa  
**Gene Summary:** Induces apoptosis through a caspase dependent pathway. Reduces mitochondrial membrane potential.[UniProtKB/Swiss-Prot Function]

**Product images:**



Circular map for RC211532



Western blot validation of overexpression lysate (Cat# [LY408172]) using anti-DDK antibody (Cat# [TA50011-100]). Left: Cell lysates from untransfected HEK293T cells; Right: Cell lysates from HEK293T cells transfected with RC211532 using transfection reagent MegaTran 2.0 (Cat# [TT210002]).