

Product datasheet for **RC211530**

DRP1 (DNM1L) (NM_005690) Human Tagged ORF Clone

Product data:

Product Type:	Expression Plasmids
Product Name:	DRP1 (DNM1L) (NM_005690) Human Tagged ORF Clone
Tag:	Myc-DDK
Symbol:	DRP1
Synonyms:	DLP1; DRP1; DVLP; DYMPLE; EMPF; EMPF1; HDYNIV; OPA5
Mammalian Cell Selection:	Neomycin
Vector:	pCMV6-Entry (PS100001)
E. coli Selection:	Kanamycin (25 ug/mL)



[View online »](#)

ORF Nucleotide
Sequence:

>RC211530 representing NM_005690
Red=Cloning site Blue=ORF Green=Tags(s)

TTTTGTAATACGACTCACTATAGGGCGGCCGGAATTCGTCGACTGGATCCGGTACCGAGGAGATCTGCC
GCCGCGATCGCC

ATGGAGGCGCTAATTCCTGTCATAAACAAGCTCCAGGACGTCTTCAACACGGTGGCGCCGACATCATCC
AGCTGCCTCAAATCGTCGTAGTGGGAACGACAGCAGCGAAAGAGCTCAGTGCTAGAAAGCCTGGTGGG
GAGGGACCTGCTCCAGAGGACTGGAATTGTACCCGAGACCTCTCATTCTGCAACTGGTCCATGTT
TCACAAGAAGATAAACGAAAAACAACAGGAGAAGAAAAATGGGGTGAAGCAGAAGAATGGGGTAAATTTT
TTCACACCAAAAAAAGCTTTACACGGATTTTGTGAAATTCGACAAGAAATGAAAATGAAACAGAAAAG
AATTTTCAGGAAATAATAAGGGAGTAAGCCCTGAACCAATTCATCTTAAGATTTTTTACCACACGTTGTC
AATTTGACACTTGTGGATTTGCCAGGAATGACCAAGGTGCCTGTAGGTGATCAACCTAAGGATATTGAGC
TTCAAATCAGAGAGCTCATTCTCGTTTATCAGTAATCCTAATCCATTATCCTCGCTGCTACTGCTGC
TAATACAGATATGGCAACATCAGAGGCACTTAAAATTTCAAGAGAGGTAGATCCAGATGGTCCGAGAAC
CTAGCTGTAATCACTAACTTGATCTCATGGATGCGGGTACTGATGCCATGGATGTATTGATGGGAAGGG
TTATTCAGTCAAACCTTGAATAATTGGAGTAGTTAACAGGAGCCAGCTAGATATTAACAACAAGAGAG
TGTAACCTGATTCAATCCGTGATGAGTATGCTTTTCTTCAAAGAAAATATCCATCTCTGGCCAATAGAAA
GGAACAAAGTATCTTGCTAGGACTCTAACAGGTTACTGATGCATCACATCAGAGATTGTTTACCAGAGT
TGAAAACAAGAATAAATGTTCTAGCTGCTCAGTATCAGTCTCTTCAAATAGCTACGGTGAACCCGTGGA
TGATAAAAGTGCTACTTTACTCCAATTATTACCAATTTGCCACAGAATATTGTAACACTATTGAAGGA
ACTGCAAAATATATTGAACTTCGGAGCTATGCGGTGGTGTAGAATTTGTTATATTTCCATGAGACTT
TTGGGCGAACCTTAGAATCTGTTGATCCACTTGGTGGCCTAACACTATTGACATTTTACTGCTCCATTAG
AAATGCTACTGGTCCCTCGTCTGCTTTATTTGTGCCTGAGGTTTCATTTGAGTTACTGGTGAAGCGGCAA
ATCAAACGTCTAGAAGAGCCAGCTCCGCTGTGTGGAACCTGGTTCATGAGGAAATGCAAAGGATCATT
AGCACTGTAGCAATTACAGTACACAGGAATTGTTACGATTTCTAACTTCATGATGCCATAGTTGAAGT
GGTGAATGCTCTTCTTCTGAAAAGGTTGCCTGTTACAAATGAAATGGTCCATAACTTAGTGGCAATTGAA
CTGGCTTATATCAACACAAAACATCCAGACTTTGCTGATGCTTGTGGGCTAATGAACAATAATATAGAGG
AACAAAGGAGAAACAGGCTAGCCAGAGAATTACCTTCAGCTGTATCACGAGACAAGGTTGCATCTGGAGG
TGGTGGGTTGGAGATGGTGTTCAGAACAACACAGGCAACTGGAGAGGAATGCTGAAAACCTCAAAA
GCTGAAGAGTTATTAGCAGAAGAAAAATCAAACCCATTCCAATTATGCCAGCCAGTCCACAAAAAGGTC
ATGCCGTGAACCTGCTAGATGTGCCAGTTCCTGTTGCACGAAAATATCTGCTCGGGAACAGCGAGATTG
TGAGGTTATTGAACGACTCATTAAATCATATTTTCTCATTGTGAGAAAAGAAATTTCAAGACAGTGTGCCA
AAGGCAGTAATGCATTTTTTGGTTAATCATGTGAAAGACACTCTTCAGAGTGAGCTAGTAGGCCAGCTGT
ATAAATCATCCTTATTGGATGATCTTCTGACAGAATCTGAGGACATGGCACAGCGCAGGAAAGAAGCAGC
TGATATGCTAAAGGCATTACAAGGAGCCAGTCAAATTATTGCTGAAATCCGGGAGACTCATCTTTGG

ACGCGTACGCGGCCGCTCGAGCAGAACTCATCTCAGAAGAGGATCTGGCAGCAATGATATCCTGGATT
ACAAGGATGACGACGATAAGGTTTAA

Protein Sequence: >RC211530 representing NM_005690
Red=Cloning site Green=Tags(s)

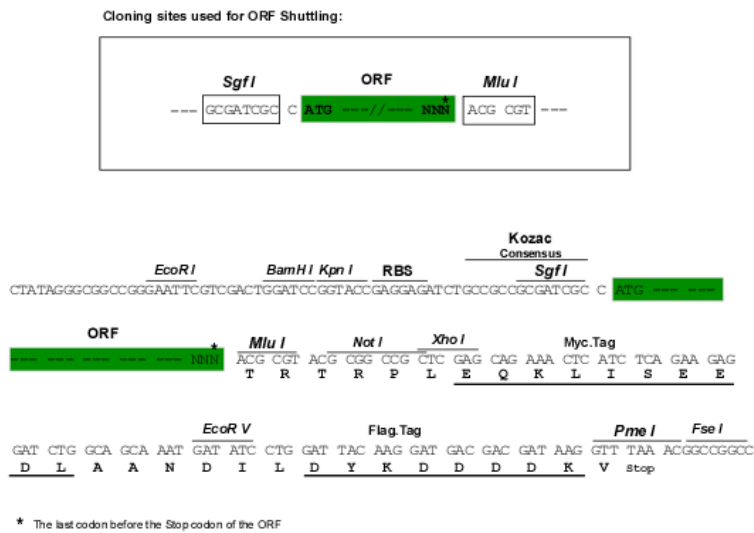
MEALIPVINKLQDVFNVTGADIIQLPQIVVVGTSQSSGKSSVLESVGRDLLPRGTGIVTRRPLILQLVHV
 SQEDKRKTTGEENGVEAEWGWKFLHTKNKLYTDFDEIRQEIENETERISGNNKGVSPPIHLKIFSPNVV
 NLTLVDLPGMTKVPVGDQPKDIELQIRELILRFISNPNSIILAVTAANTDMATSEALKISREVDPDGRRT
 LAVITKLDLMDAGTDAMDVLMGRVIPVKLGIIGVVNRSQLDINNKKSVTDSIRDEYAFLLQKKYPSLANRN
 GTKYLARTLNRLMHHIRDCLPELKRINVLAAQYQSLLSYGEVDDKSATLLQLITKFATEYCNTIEG
 TAKYIETSELCGGARICYIFHETFGRTLESVDPLGGLNTIDILTAIRNATGPRPALFVPEVSFELLVKRQ
 IKRLEEPSLRCVELVHEEMQRIIQHCSNYSTQELLRFPKLHDAIVEVVTCLLRKRLPVTNEMVHNLVAIE
 LAYINTKHPDFADACGLMNNNIEEQRRNRLARELPSAVSRDKVASGGGGVGDGVQEPPTGNWRGMLKTSK
 AEELLAEEKSKPIPIIMPASPQKGHAVNLLDVPVPVARKLSAREQRDCEVIERLIKSYFLIVRKNIQDSVP
 KAVMHFLVNHVKDTLQSELVGQLYKSSLLDDLLESEDMAQRKKAADMLKALQGASQIIAETREHLW

TRTRPLEQKLISEEDLAANDILDYKDDDDKV

Chromatograms: https://cdn.origene.com/chromatograms/mg3899_f01.zip

Restriction Sites: SgfI-MluI

Cloning Scheme:



ACCN: NM_005690

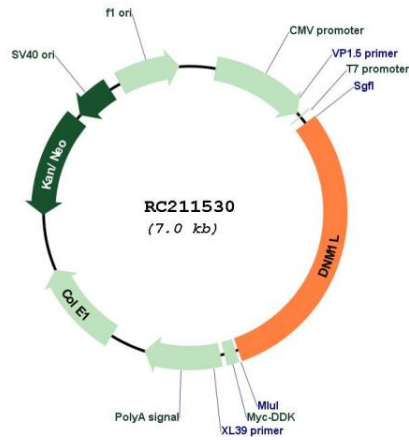
ORF Size: 2097 bp

OTI Disclaimer: The molecular sequence of this clone aligns with the gene accession number as a point of reference only. However, individual transcript sequences of the same gene can differ through naturally occurring variations (e.g. polymorphisms), each with its own valid existence. This clone is substantially in agreement with the reference, but a complete review of all prevailing variants is recommended prior to use. [More info](#)

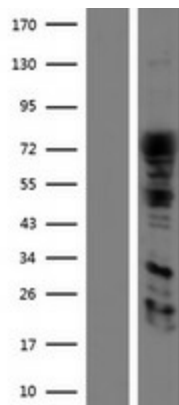
OTI Annotation: This clone was engineered to express the complete ORF with an expression tag. Expression varies depending on the nature of the gene.

Components:	The ORF clone is ion-exchange column purified and shipped in a 2D barcoded Matrix tube containing 10ug of transfection-ready, dried plasmid DNA (reconstitute with 100 ul of water).
Reconstitution Method:	<ol style="list-style-type: none">1. Centrifuge at 5,000xg for 5min.2. Carefully open the tube and add 100ul of sterile water to dissolve the DNA.3. Close the tube and incubate for 10 minutes at room temperature.4. Briefly vortex the tube and then do a quick spin (less than 5000xg) to concentrate the liquid at the bottom.5. Store the suspended plasmid at -20°C. The DNA is stable for at least one year from date of shipping when stored at -20°C.
RefSeq:	<u>NM_005690.4</u> , <u>NP_005681.2</u>
RefSeq Size:	2445 bp
RefSeq ORF:	2100 bp
Locus ID:	10059
UniProt ID:	<u>O00429</u>
Cytogenetics:	12p11.21
Domains:	dynamamin_2, dynamamin, GED
Protein Pathways:	Endocytosis, Fc gamma R-mediated phagocytosis
MW:	77.9 kDa
Gene Summary:	This gene encodes a member of the dynamamin superfamily of GTPases. The encoded protein mediates mitochondrial and peroxisomal division, and is involved in developmentally regulated apoptosis and programmed necrosis. Dysfunction of this gene is implicated in several neurological disorders, including Alzheimer's disease. Mutations in this gene are associated with the autosomal dominant disorder, encephalopathy, lethal, due to defective mitochondrial and peroxisomal fission (EMPF). Alternative splicing results in multiple transcript variants encoding different isoforms. [provided by RefSeq, Jun 2013]

Product images:



Circular map for RC211530



Western blot validation of overexpression lysate (Cat# [LY417132]) using anti-DDK antibody (Cat# [TA50011-100]). Left: Cell lysates from untransfected HEK293T cells; Right: Cell lysates from HEK293T cells transfected with RC211530 using transfection reagent MegaTran 2.0 (Cat# [TT210002]).