

Product datasheet for RC211523

HEATR6 (NM_022070) Human Tagged ORF Clone

Product data:

Product Type:	Expression Plasmids
Product Name:	HEATR6 (NM_022070) Human Tagged ORF Clone
Tag:	Myc-DDK
Symbol:	HEATR6
Synonyms:	ABC1
Mammalian Cell Selection:	Neomycin
Vector:	pCMV6-Entry (PS100001)
E. coli Selection:	Kanamycin (25 ug/mL)
ORF Nucleotide Sequence:	>RC211523 ORF sequence Red=Cloning site Blue=ORF Green=Tags(s)

TTTTGTAATACGACTCACTATAGGGCGGCCGGAATTCGTCGACTGGATCCGGTACCGAGGAGATCTGCC
GCCCGCATCGCC

ATGGCTGCTGTGCAAGTTGTCGGTTCGTGGCCTCCGTGCAGCCGCGGGAGGCACCGCGGAAGCAATCC
CTGAGCGAGGCAATGGGTTTCGCCTCTTGTCTGCCAGGCTCTGCGCCCTGCGCCCGGATGACAGCAGCTC
CGCCCGCACCGAGATCCACCTGCTCTTCGATCAGCTCATCTCCGAGAACTACAGCGAGGGCAGTGGCGTG
GCCCGGAGGACGTTAGTGCTCTTCTTGTCCAGGCTTGCCGACTGGTACCTTTAATCAGAATCATCTTG
TCAGCAAAGTGAGCCAGCTTATCCACCATTACTTAACAGATTACAGGTAATTGTTGATGAACAGCACTT
GGATTTCCCTGTTGGCATATACTATTTCCGCTATTCATCAGTGTAGTTCCCTGGACACACAGGAAATCCTT
CAAGCCCTGGCAGCTCTGGTGTACTGCAATGGCTCCAAATGTCAAAGTACCTCCCAGAGCTGCTAGGCA
ACACCGGACTCTTAATGAAGTTGAGTGACTTGGCTCAGTCTGATCCTGAAGTCAGGAGAGCTGCAGTACA
TTGTATGGCAAATATGTCTCAGTGTGCCAGGACAGCCGATTTGGAGGAGCCCTACCAAAATGTCTGT
TTCCAAGCTTTTCTGACTATTTTACAGTCTCCAAAATCATCTGATATGGATGATACACATTTTGCATGT
TATTGCAAATGCATTAAGGTATACAGTCACTTCTAAATGGTGGGAGAATGAACTAACACAGACTGA
TGAACCTGGAGCACTTTTAGCTGTGCTAAAGAAATTCATGTTTCCAGGACTCCCTGGACTAAACATAGAG
ATGCCACGGTGTATACCCAACCTCCGCTTCTCAGTATGATGGGCGAACACCTATCAAACCAAGCAATCA
CAGAATCCAGTGTCTTCGACCAACTTTGAATAAAAAGAAAAATCCAAAGTAAAACCAAAAGAAAAATCCA
GCAAGGAGAGGAGGAGGAAAAGGAATCCAGTGGTGAATAGAGGCAGCCCAAGTCACTGGCACAGGCAGA
GTGAACCTGCATGAAGGGAACACTTGGTGTCCCTCCTCCCTGGGTGTCCAGATTTGCCTTTAGATGGAA
GTGGAGCTGCAGAAAAAGATGGAGTCTCCTCATCCTTCAGTTCTTCCAGTTGGAAAAGGGTCAGCAGTAG
TGAGTCAGACTTTTCTGATGCTGAAGGAGGCATGCAGAGTAAAATGAGGTCTTACCAAGCTAAAGTTCGC
CAAGGAGCCTTAGTTTGTCTTTCTACTATAAAAATCGATAGAAAAAAAAGTTCTTTATGGCTACTGGT
CAGCTTTTATTCCTGATACGCCTGAACTGGCAGCCACAGTCAGTGTCTTGTGACTCTTACATTGAA
AGACCTTCTCCAAAGACAGTGCCTGTGCTCTGCAAGTTTTATCTGCCATCTTGAAGGCTCAAAGCAG



[View online »](#)

TTTCTTTCTGTTGCTGAAGATACCAAGTACCACAGAAAGGGCTTTTACCCCTTCTCCGTAATGATCGCTT
GCAGCATTAGAGAGTTGCACAGATGTCTTTTGTAGCTTTGGTGGCGGAGTCATCCTCACAGACCGTTAC
TCAGATAATTAAGTGCCTTGCAAATTTAGTATCAAATGCACCTTATGATCGTCTAAAACCTCAGCCTGCTG
ACCAAAGTCTGGAACAGATAAAGCCTTATATTCGCCACAAAGATGTTAATGTTCTGTGTCAAGTCTCA
CACTCTGGGAGCTATAGTGTCCACCCACGCACCTTTACCTGAAGTCCAACCTACTCTGCAACAGCCATG
TTCTTCTGGACTCGGTAATAGCAATTCAGCAACCCCTCACCTCAGCCCTCCTGATTGGTGGAAAGAAAGCC
CCTGCAGGACCCTCTCTGGAAGAAACGTCAGTTAGCTCACCTAAGGGGTCTTCAGAGCCCTGCTGGCTCA
TTCGACTCTGCATTTCCATTGTCTACTGCCCAAGGAGGATTCCCTGTTACGGTAGCGATGCTGGCTCTGC
AGCAGGAAGCACCTACGAACCATCCCCATGCGACTGGAGGCCTTACAGGTATTGACTCTTCTGGCAAGG
GGCTACTTTTCAATGACTCAAGCCTACTTGATGGAGCTTGGAGAGGTGATTTGCAAGTGCATGGGGGAAG
CAGATCCATCCATTAGCTTTCATGGAGCAAAGCTTCTGGAAGAACTGGGCACAGGCTTAATACAGCAGTA
TAAACCAGACTCCACTGCAGCACCTGATCAGAGAGCACCAGTCTTCTTGGTGGTGTGTTCTGGACTATG
ATGCTGAACGGTCTTTACCCAGAGCCCTGCAGAATTGAGAACACCCAACTCTCCAGGCGAGCGCCTGTG
ATGCCCTGTCTTCCATCTTGCCAGAGGCCCTTCAGCAATCTGCCGAATGACAGGCAGATGCTGTGCATCAC
AGTGTCTCGGGCTGAATGACAGCAAGAATCGCTTAGTAAAAGCTGCAACTTCACGGGCCCTGGGAGTC
TATGTGCTTTTTCCCTGTCTCAGACAGGATGTCATATTTGTTGCAGACCGAGCAAATGCAATATTGATGT
CACTTGAAGACAAGTCTCTGAATGTTCCAGCAAGCAGCCTGGTCCCTGGGCAACCTGCAGACACTCT
GATTGTCAACATGGAAACACCAGACCCAAGTTTCCAGGAAGAGTTCTCTGGTCTCCTGCTTTGAAAATG
TTACGATCAGCTATAGAAGCATCCAAGGATAAAGACAAGGTAAAAGCAATGCAGTCCGGGCCCTTGGA
ATTTGCTTCAATTTCTGCAACCCCTCTCATATAGAAAAACCCACATTTGCAGAAATCATTGAGGAGTCTAT
CCAGGCCCTAATTTCTACTGTTCTAACAGAAGCTGCCATGAAAGTCCGATGGAATGCTTGTATGCAATG
GGAAATGTATTTAAAAATCCTGCCCTTCTTTAGGGACAGCCCATGGACCTCCAGGCCCTACAATGCC
TGACATCGGTCTGACATCATGCAAGAACTTCAAAGTGGCATCAGATCTGCAGCTGCCCTTCCGTCCC
GGGAAGAGAGAGCAGTACGGGTCTGTTGACCAGTATGCTCGGATCTGGAATGCATTGGTACCCGCTTTA
CAGAAGAGTGAAGACACCATAGACTTTTTGGAATTCAGTACTGTGTGAGCCTACGGACCCAAATCTGCC
AGGCACTGATTACCTCTTGAGCTTGGCCAGTGCCTCGGACCTCCCTTGTATGAAAGAAACCTTGAAC
GAGTGGGAATATGGTCCAGTCTATATTCTACAGTTTTTAAAAATCAGGAGCAGAGGGAGATGACTGGA
GCACCCACAGCCACAGGAAAGAGACCAGATGGTCAGAATGGCCCTTAAACACATGGGCAGCATCCAGG
CACCAACTGGAGACACAGCCAGAAGGGCCATCATGGGCTTTTTAGAAGAGATCTGGCCGTTTGTGTTGA
CTCATCTGGATCACAAGGGGCACTCCAGGGTTAAACAAATCAG

ACGCGTACGCGGCCGCTCGAGCAGAAACTCATCTCAGAAGAGGATCTGGCAGCAAATGATATCCTGGATT
ACAAGGATGACGACGATAAGGTTTAA

Protein Sequence:

>RC211523 protein sequence
Red=Cloning site Green=Tags(s)

```

MAAVQVVGSWPSVQPREAPREAIIPERGNFRLLSARLICALRPDDSSSARTEIHLLFDQLISENYSESGV
APEDVSALLVQACRLVPLNQNHLSVKVSQLIHLLNRLQVIVDEQHLDFLLAYTISAIHQCSSWTHREIL
QALAALVYCNGSKCQKYLPELLGNTGLMLKLSDLAQSDPEVRRAAVHCMANLCLSVPGOPYLEEPYQNV
FOAFLTILQSPKSSDMDITFCMLLQNALKGIQSLNNGGRMKLTQTDDELGALLAVLKKFMFHGLPGLNIE
MPTVLYPTLPQYDGRTPIKPQQSESSASRPTLNKSKKSKVKPKKIQQGEEEEKESSGEIEAAPVTGTGR
VNLHEGNTWCPSSLGVQSLPLDGSAAEKDGVSSSFSSSWKRVSSSEDFSDAEGGMQSKMRSYQAKVR
QGALVCFLSTIKSIEKKVLYGYWSAFIPDTPELGSPQSVSLMTLTKDPSPKTRACALQVLSAILEGSKQ
FLSVAEDTSDHRAFTPFVMIACSIRELHRCLLLALVAESSQTVTQIIKCLANLVSNAFYDRLKLSLL
TKVWNQIKPYIRHKDVNVRVSSLTLLGAIVSTHAPLPEVQLLQPCSSGLGNSNSATPHLSPPDWWWKA
PAGPSLEETSVSVPKGSSEPCWLIRLCISIVLVPKEDSCSGSDAGSAAGSTYEPSMPMRLEALQVLTLLAR
GYFSMTQAYLMELGEVICKCMGEADPSIQLHGAKLLEELGTGLIQYKPDSTAAPDQRAPVFLVVMFWM
MLNGPLPRALQNSEHPTLQASACDALSSILPEAFSNLPNDRQMLCITVLLGLNDSKNRLVKAATSRALGV
YVLPCLRQDVIFVADAANAILMSLEDKSLNVRKAASWLNGLTDTLIVNMPDPSFQEEFSGLLLLKM
LRSIAIEASKDKDKVKSNAVRALGNLLHFLQPSHIEKPTFAEIIIEESIQUALISTVLTEAMKVRWNACYAM
GNVFKNPALPLGTAPWTSQAYNALTSVVTCKNFVIRSAALSVPGKREQYGSVDQYARIWNALVTAL
QKSEDTIDFLFKYCVSLRTQICQALIHLLSLASADLPCMKETLELSGNMVQSYILQFLKSGAEGDDTG
APHSPQERDQMVRMALKHMGSIQAPTGDARRAIMGFLEEILAVCFDSSGSQALPGLTNQ
    
```

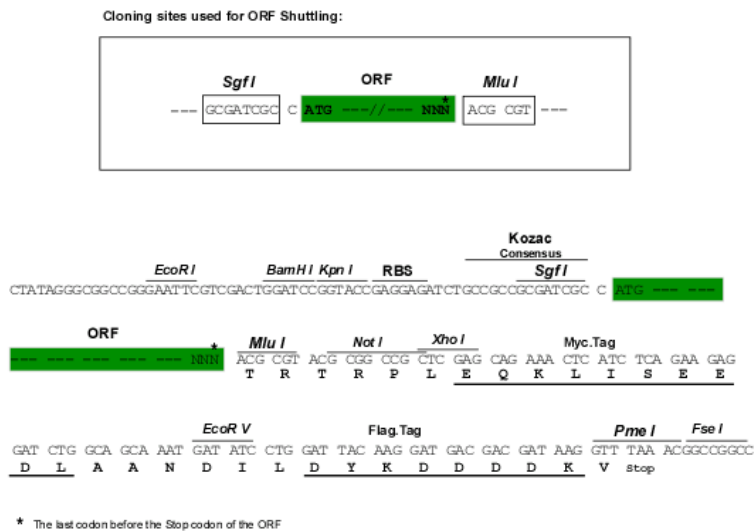
TRTRPLEQKLISEEDLAANDILDYKDDDDKV

Chromatograms:

https://cdn.origene.com/chromatograms/mk6678_c11.zip

Restriction Sites:

SgfI-MluI

Cloning Scheme:

ACCN:

NM_022070

ORF Size:

3543 bp

OTI Disclaimer: Due to the inherent nature of this plasmid, standard methods to replicate additional amounts of DNA in E. coli are highly likely to result in mutations and/or rearrangements. Therefore, OriGene does not guarantee the capability to replicate this plasmid DNA. Additional amounts of DNA can be purchased from OriGene with batch-specific, full-sequence verification at a reduced cost. Please contact our customer care team at custsupport@origene.com or by calling 301.340.3188 option 3 for pricing and delivery.

The molecular sequence of this clone aligns with the gene accession number as a point of reference only. However, individual transcript sequences of the same gene can differ through naturally occurring variations (e.g. polymorphisms), each with its own valid existence. This clone is substantially in agreement with the reference, but a complete review of all prevailing variants is recommended prior to use. [More info](#)

OTI Annotation: This clone was engineered to express the complete ORF with an expression tag. Expression varies depending on the nature of the gene.

Components: The ORF clone is ion-exchange column purified and shipped in a 2D barcoded Matrix tube containing 10ug of transfection-ready, dried plasmid DNA (reconstitute with 100 ul of water).

Reconstitution Method:

1. Centrifuge at 5,000xg for 5min.
2. Carefully open the tube and add 100ul of sterile water to dissolve the DNA.
3. Close the tube and incubate for 10 minutes at room temperature.
4. Briefly vortex the tube and then do a quick spin (less than 5000xg) to concentrate the liquid at the bottom.
5. Store the suspended plasmid at -20°C. The DNA is stable for at least one year from date of shipping when stored at -20°C.

RefSeq: [NM_022070.5](#)

RefSeq Size: 3935 bp

RefSeq ORF: 3546 bp

Locus ID: 63897

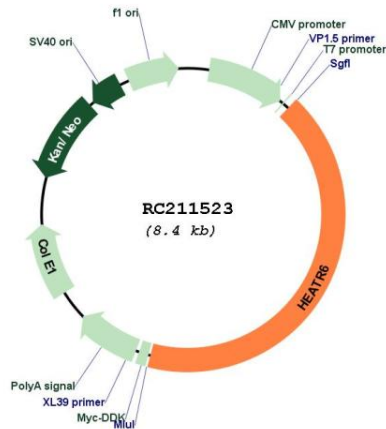
UniProt ID: [Q6AI08](#)

Cytogenetics: 17q23.1

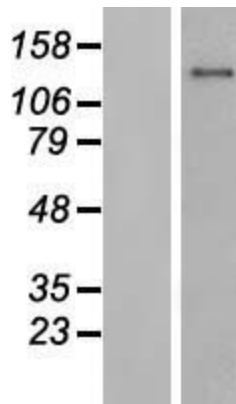
MW: 128.8 kDa

Gene Summary: Amplification-dependent oncogene.[UniProtKB/Swiss-Prot Function]

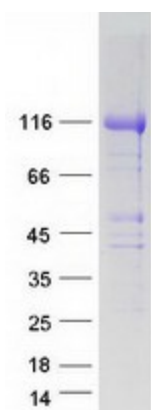
Product images:



Circular map for RC211523



Western blot validation of overexpression lysate (Cat# [LY411793]) using anti-DDK antibody (Cat# [TA50011-100]). Left: Cell lysates from untransfected HEK293T cells; Right: Cell lysates from HEK293T cells transfected with RC211523 using transfection reagent MegaTran 2.0 (Cat# [TT210002]).



Coomassie blue staining of purified HEATR6 protein (Cat# [TP311523]). The protein was produced from HEK293T cells transfected with HEATR6 cDNA clone (Cat# RC211523) using MegaTran 2.0 (Cat# [TT210002]).