

Product datasheet for RC211515

CSTL1 (NM_138283) Human Tagged ORF Clone

Product data:

Product Type: Expression Plasmids
Product Name: CSTL1 (NM_138283) Human Tagged ORF Clone
Tag: Myc-DDK
Symbol: CSTL1
Synonyms: CTES1; dj322G13.4; RCET11
Mammalian Cell Selection: Neomycin
Vector: pCMV6-Entry (PS100001)
E. coli Selection: Kanamycin (25 ug/mL)
ORF Nucleotide Sequence: >RC211515 ORF sequence
Red=Cloning site Blue=ORF Green=Tags(s)

TTTTGTAATACGACTCACTATAGGGCGGCCGGAATTCGTCGACTGGATCCGGTACCGAGGAGATCTGCC
GCC**CGATCGCC**

ATGGGGATCGGATGCTGGAGAAACCCCTGCTGCTGCTGATTGCCCTGGTCTGTGAGCAAGCTGGGTC
ACTTCCAAAGGTGGGAGGGCTTCCAGCAGAAGCTCATGAGCAAGAAGCATGAATTCAACTCAACT
CTTCATTCAATCCTACAACAATGCCAGCAACGACACCTACTTATATCGAGTCCAGAGGCTAATTCGAAGT
CAGATGCAGTGCAGCAGGGAGTGGAGTATATAGTCACTGTGAAGATTGGCCGGACCAAAATGCAAGAGGA
ATGACACGAGCAATTCTCCTGCCCCCTGCAAAGCAAGAAGCTGAGAAAGAGTTTAATTTGCGAGTCTTT
GATATACACCATGCCCTGGATAAACTATTTCCAGCTCTGGAACAATTCCTGTCTGGAGGCCGAGCATGTG
GGCAGAAACCTCAGA

ACGCGTACGCGGCCGCTCGAGCAGAACTCATCTCAGAAGAGGATCTGGCAGCAAATGATATCCTGGATT
ACAAGGATGACGACGATAAGGTTTAA

Protein Sequence: >RC211515 protein sequence
Red=Cloning site Green=Tags(s)

MGIGCWRNPLLLLIALVLSAKLGHFQRWEGFQQKLMSSKKNMNSTLNFFIQSYNNASNDTYLYRVQRLIRS
QMQLTTGVEYIVTVKIGRTKCKRNDTSNSSCLPQSKLRLKSLICESLIYTMPWINYFQLWNNSCLEAEHV
GRNLR

TRTRPLEQKLISEEDLAANDILDYKDDDDKV

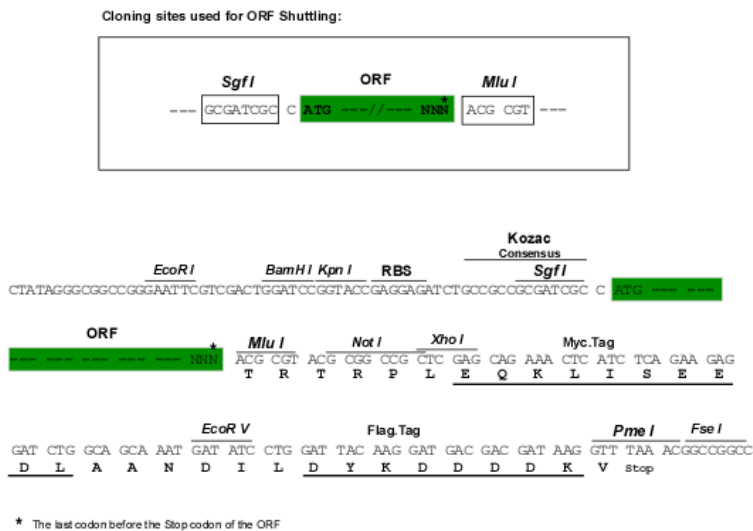
Chromatograms: https://cdn.origene.com/chromatograms/mk6463_a09.zip



[View online >](#)

Restriction Sites: SgfI-MluI

Cloning Scheme:



ACCN: NM_138283

ORF Size: 435 bp

OTI Disclaimer: The molecular sequence of this clone aligns with the gene accession number as a point of reference only. However, individual transcript sequences of the same gene can differ through naturally occurring variations (e.g. polymorphisms), each with its own valid existence. This clone is substantially in agreement with the reference, but a complete review of all prevailing variants is recommended prior to use. [More info](#)

OTI Annotation: This clone was engineered to express the complete ORF with an expression tag. Expression varies depending on the nature of the gene.

Components: The ORF clone is ion-exchange column purified and shipped in a 2D barcoded Matrix tube containing 10ug of transfection-ready, dried plasmid DNA (reconstitute with 100 ul of water).

Reconstitution Method:

1. Centrifuge at 5,000xg for 5min.
2. Carefully open the tube and add 100ul of sterile water to dissolve the DNA.
3. Close the tube and incubate for 10 minutes at room temperature.
4. Briefly vortex the tube and then do a quick spin (less than 5000xg) to concentrate the liquid at the bottom.
5. Store the suspended plasmid at -20°C. The DNA is stable for at least one year from date of shipping when stored at -20°C.

RefSeq: [NM_138283.1](#), [NP_612140.1](#)

RefSeq Size: 736 bp

RefSeq ORF: 438 bp

Locus ID: 128817

UniProt ID: [Q9H114](#)

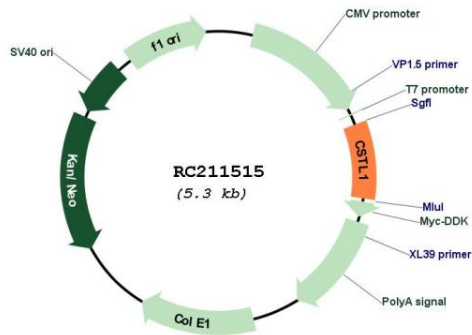
Cytogenetics: 20p11.21

Protein Families: Secreted Protein

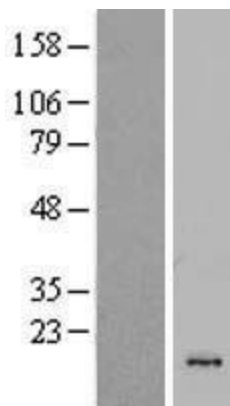
MW: 17 kDa

Gene Summary: The cystatin superfamily encompasses proteins that contain multiple cystatin-like sequences. Some of the members are active cysteine protease inhibitors, while others have lost or perhaps never acquired this inhibitory activity. There are three inhibitory families in the superfamily, including the type 1 cystatins (stefins), type 2 cystatins and the kininogens. The type 2 cystatin proteins are a class of cysteine proteinase inhibitors found in a variety of human fluids and secretions. The cystatin locus on chromosome 20 contains the majority of the type 2 cystatin genes and pseudogenes. This gene is located at the telomeric end of the cystatin locus and encodes a type 2 cystatin-like protein. The specific function of this protein has not been determined. [provided by RefSeq, Jul 2008]

Product images:



Circular map for RC211515



Western blot validation of overexpression lysate (Cat# [LY408720]) using anti-DDK antibody (Cat# [TA50011-100]). Left: Cell lysates from untransfected HEK293T cells; Right: Cell lysates from HEK293T cells transfected with RC211515 using transfection reagent MegaTran 2.0 (Cat# [TT210002]).