

## Product datasheet for RC211507

### GABPB2 (GABPB1) (NM\_016655) Human Tagged ORF Clone

#### Product data:

Product Type:	Expression Plasmids
Product Name:	GABPB2 (GABPB1) (NM_016655) Human Tagged ORF Clone
Tag:	Myc-DDK
Symbol:	GABPB2
Synonyms:	BABPB2; E4TF1; E4TF1-47; E4TF1-53; E4TF1B; GABPB; GABPB-1; GABPB2; NRF2B1; NRF2B2
Mammalian Cell Selection:	Neomycin
Vector:	pCMV6-Entry (PS100001)
E. coli Selection:	Kanamycin (25 ug/mL)
ORF Nucleotide Sequence:	>RC211507 representing NM_016655 Red=Cloning site Blue=ORF Green=Tags(s)

TTTTGTAATACGACTCACTATAGGGCGGCCGGAATTCGTCGACTGGATCCGGTACCGAGGAGATCTGCC  
GCC**CGATCGCC**

ATGTCCTGGTAGATTTGGGAAAGAAGCTTTTAGAAGCGGCACGAGCAGGTCAAGATGATGAAGTTCGTA  
TTTTGATGGCAAATGGAGCTCCCTTTACTACAGACTGGCTGGAACTTCTCCACTTCATCTAGCAGCACA  
GTATGGTCATTATCCACCACAGAGGTACTGCTGCGAGCTGGTGTGAGCAGAGATGCCAGAACCAAAGTG  
GACCGAACACCATTACATATGGCAGCTTCTGAGGGCCATGCCAGCATAGTAGAGGTTTTACTTAAGCATG  
GTGCTGATGTCAATGCAAAGGACATGTTAAAGATGACAGCTCTCCATTGGGCCACAGAACAATCATCA  
AGAGGTGGTGGAACTTTAATCAAATATGGTGTGATGTACACACGCAAAGTAAATTTGTAAAAGTGC  
TTTGATATTTCAATAGACAATGGAAATGAAGATTTAGCAGAGATATTACAGATTGCTATGCAGAACCAAA  
TCAACACAAACCCAGAGAGTCTGACACTGTGACAATACATGCTGCAACACCACAGTTTATCATTGGACC  
TGGAGGGGTGGTGAACCTAACAGATGAAACGGGTGATCTGCTGTTCAAGTTTGGAACTCTTCTACATCA  
GTATTAGCTACATTAGCTGCCTTAGCTGAAGCATCTGCTCCATTGTCCAATCTTCCAGAACTCCAGTAG  
TGGCCACAGAAGAAGTAGTTACTGCAGAATCTGTGGATGGTGCATTAGCAAGTAGTTAGTTCAAGGGG  
TCAGCAAGTCATCACAATAGTTACAGATGGAATTCAGCTTGGAAATTTGCACTCTATTCCAACAGTGGA  
ATTGGTCAGCCCATTTGTGACCATGCCAGATGGACAACAAGTATTAACAGTACCAGCAACAGCATTG  
CTGAAGAACTGTTATAAGTGAAGAACCACAGCTAAGAGACAATGTATCGAAATAATTGAAACCGGGT  
GGAATCTGCAGAAATAGAAGTAAGGAGTCTTTTACCCGGTGTGCTTTGCCGAGTCATCCAAAA

**ACGCGT**ACGCGGCCGCTCGAGCAGAAACTCATCTCAGAAGAGGATCTGGCAGCAAATGATATCCTGGATT  
ACAAGGATGACGACGATAAGGTTTAA



[View online »](#)



**Reconstitution Method:**

1. Centrifuge at 5,000xg for 5min.
2. Carefully open the tube and add 100ul of sterile water to dissolve the DNA.
3. Close the tube and incubate for 10 minutes at room temperature.
4. Briefly vortex the tube and then do a quick spin (less than 5000xg) to concentrate the liquid at the bottom.
5. Store the suspended plasmid at -20°C. The DNA is stable for at least one year from date of shipping when stored at -20°C.

**RefSeq:** [NM\\_016655.4](#)

**RefSeq Size:** 1412 bp

**RefSeq ORF:** 1047 bp

**Locus ID:** 2553

**UniProt ID:** [Q06547](#)

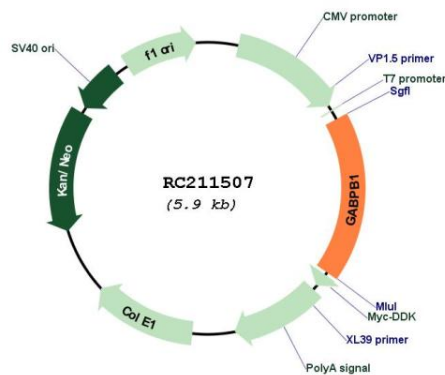
**Cytogenetics:** 15q21.2

**Protein Families:** Transcription Factors

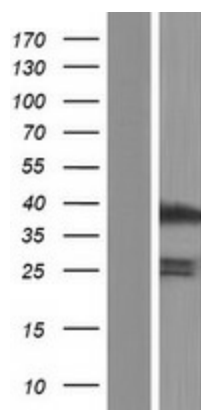
**MW:** 36.8 kDa

**Gene Summary:** This gene encodes the GA-binding protein transcription factor, beta subunit. This protein forms a tetrameric complex with the alpha subunit, and stimulates transcription of target genes. The encoded protein may be involved in activation of cytochrome oxidase expression and nuclear control of mitochondrial function. The crystal structure of a similar protein in mouse has been resolved as a ternary protein complex. Multiple transcript variants encoding distinct isoforms have been identified for this gene. [provided by RefSeq, Jul 2008]

## Product images:



Circular map for RC211507



Western blot validation of overexpression lysate (Cat# [LY413854]) using anti-DDK antibody (Cat# [TA50011-100]). Left: Cell lysates from untransfected HEK293T cells; Right: Cell lysates from HEK293T cells transfected with RC211507 using transfection reagent MegaTran 2.0 (Cat# [TT210002]).