

## Product datasheet for RC211506

### UBAP2 (NM\_018449) Human Tagged ORF Clone

#### Product data:

Product Type:	Expression Plasmids
Product Name:	UBAP2 (NM_018449) Human Tagged ORF Clone
Tag:	Myc-DDK
Symbol:	UBAP2
Synonyms:	UBAP-2
Mammalian Cell Selection:	Neomycin
Vector:	pCMV6-Entry (PS100001)
E. coli Selection:	Kanamycin (25 ug/mL)
ORF Nucleotide Sequence:	>RC211506 representing NM_018449 Red=Cloning site Blue=ORF Green=Tags(s)

TTTTGTAATACGACTCACTATAGGGCGGCCGGAATTCGTCGACTGGATCCGGTACCGAGGAGATCTGCC  
GCC**CGATCGCC**

ATGATGACTTCAGTGAGCAGTGACCATTGTGCGAGGTGCTCGGGAAAAACACAGATTTTCAGCAGCACAAT  
CAACGCAACCACAGAAACAAGTGGTACAGGCAACAGCTGAACAGATGCGTCTCGTCAAGTGATCTTTGA  
TAAGAATGATTCAGATTTTGAAGCTAAAGTTAAGCAGCTTATGGAAGTGACAGGGAAAAATCAGGATGAA  
TGCATAGTGGCCCTACATGATTGTAATGGAGATGTGAACAAAGCTATCAATATATTGCTGGAAGGGAATT  
CAGACACAACCTTCATGGGAGACTGTAGGGTGAAGAAAAAGAATTTTGAAAAGAAAATTCAGAAAACAA  
AGAGAATAGAGAGAAGAAAAGCGAGAAAGAATCGAGTCGTGGACGTGGAAACAACAACCGGAAAGGAAGA  
GGCGGCAATCGTGGCAGAGAATTTAGAGGTGAAGAAAATGGAATTGATTGCAATCAAGTGACAAACCTT  
CAGATCGTGGCAAGCGAGCCCGGGTAGAGGATTTGGACGTGGCAGAGGGAGAGGGGCAGGAAGGTTCTC  
AACCCAAGGATGGGGACATTTAATCCTGCAGACTATTCAGATTCATACATCTACAGATGTGTGTGGGACA  
AAGCTAGTAGTTTGGGAAGCTGCTCAGAATGGTGCAGATGAGGGAAGTGAAGTGGCATCAATACTCACA  
ACATAGCTCAGGATCTGTCAAACAAAAGTCTTATGGACTCAAAGGGCTTGAAGAATTCGTGGAAGA  
GTGGACAACAGAAGACTGGACTGAAGATCTTTCTGAAACAAAGGTCTTCACTGCCTCATCTGCTCCAGCA  
GAGAATCACATCTTACCTGGGCAAGCATTGATCTGGTAGCCTTGCTCCAGAAGCCTGTTCTCACAGTC  
AAGCCTCAGAAGCCAACCTCTTTGAAACTTCCCAACAGCAGGGCTTTGGCCAAGCCTTGCTTTCACAAA  
TTCGCAACACAACAATCAGATGGCACCAGGACTGGCAGCTCCACTGCCGTCAACTCCTGTTCTCCTCAG  
AGCCTGTCATCCGTCCTTGGCTCAGGATTTGGAGAGCTTGCAACCACAAAAATGGCAAACATCACCAGCT  
CCCAGATTTTGGACAGTTGAAAGCTCCGAGTTTGGGCCAGTTTACCACCACCCCAAGTACACAGCAGAA  
TAGTACAAGTCACTCAACTACTACTTCTGGGACCTCAAGCCCCAACATCCAGTCCCTCAGTCCCT  
AGTCATCTTGACTTCAAATCTCAACCTGAGCCATCCCCAGTTCTTAGCCAGTTGAGCCAGCGACAACAGC  
ACCAGAGCCAGGCAGTCACTGTTCTCCTCCTGGTTTGGAGTCTTTCTTCCCAGGCAAAACTTCGAGA  
ATCAACACCTGGAGACAGTCCCTCCACTGTGAACAAGCTTTTGCAGTTCACAGCAGCACCATTGAAAAT



[View online »](#)

ATCTCTGTGTCTGTCCACCAGCCACAGCCCAAACACATCAAACCTTGCTAAGCGGGGATACCCCCAGCTT  
 CTAAGATCCCAGCTTCTGCAGTGGAAATGCCTGGTTCAGCAGATGTCACAGGATTAATGTGCAGTTTGG  
 GGCTCTGGAATTTGGGTGAGAACCTTCTCTCTGAATTTGGATCAGCTCCAAGCAGTAAAAATAGTAAT  
 CAGATCCCATCAGCTTGTATTCGAAGTCTTTAAGTGAGCCTTTGAATACATCTTTATCAATGACCAGTG  
 CAGTACAGAACTCCACATATACTTCCGTATTACCTCCTGCAGTCTGACAAGCTCATCACTGAATTC  
 TGCTAGTCCAGTAGCAATGTCTTCTCTTATGACCAGAGTCTGTGCATAACAGGATCCCATACCAAAGC  
 CCTGTGAGTTCACAGAGTCAGTCCAGGAACCATGAATGGACATGGTGGTTCGAACTCAGCAGCA  
 CACTAGACACTCCAAAGACAACAGGCCCTCCCTCTGCCCTCCCGTCTGTGAGTCCCTGCCAGCACAC  
 CTCTGCACTGCACTTCTGCCGTCCACATCCCAGCACACTGGCGACTGACTAGCAGCCCTCTCTCTCAG  
 CTTAGCAGTTCGCTCTCCAGCCACCAGAGCAGCCTCTCTGCACATGCAGCCCTCTCTCGAGCAGCTCAC  
 ACACACATGCCAGTGTGGAGAGCGCCTCTTCCCAGCCTCAGCCACCTTCTCCAGCGCAGCGACCTC  
 CGTCTCAAGTTCGCATCCTCAGGCGCCAGCCTGTCCAGTAGCATGAACACCGGAACAGCCTCTGTCTG  
 GGTGGGACCCCGGAGTGCATCCAGCAGCAGTAGCAGGGCCGCGCCTTGGTACCTCAGGCAAAGCAC  
 CCCCAACTTACCTCAGGGGTGCCTCCCTGCTGCACAACAGTACCTCGTAGGTCGGGAGGACTGCT  
 TCCTGCCTACCGATCTATGGCTATGACGAGCTCCAGATGCTGCAGTACGGCTGCCAGTGGACTACTAT  
 GGAATTCCTTTGCTGCACCCACAGCGCTTGCCAGCCGAGATGGGAGCCTAGCTAATAATCCATATCCAG  
 GTGATGTCACAAAGTTTGGCCGTGGGGACTCTGCATCCCTGCACCCGCTACCACACCAGCTCAGCCACA  
 GCAGAGCCAATCAGAGCCACCACACAGCCAGCAGCCCTTCGTGAATCCTGCACTGCCACCTGGCTAT  
 AGCTACACTGGTCTTCCCTACTACACAGGCATGCCAGTGCCTTCCAGTATGGCCCCACCATGTTTGTCC  
 CTCCAGCCTCAGCCAAGCAACATGGGGTGAACCTCAGCACTCCCACACCTCCCTTCCAGCAGGCCAGTGG  
 TTATGGCCAGCAGCGCTACAGTACAGTTATGACGACCTGACCCAGGGGACAGCAGCAGGAGACTACTCC  
 AAAGGTGGCTATGCTGGATCATCGCAGGCACCAACAAGTCTGCAGGTTCTGGCCTGGCAAAGGAGTAT  
 CAGTGTCTTCAAGCACCCTGGTCTACCTGATATGACTGGTCTGTCTACAATAAGACACAGCACTTTTGA  
 CAAGCGGATTCATGACAGGGACGCTCCACCTTTCAGCTGCCCTCGGTCTTGGGCTCCACTGGCCCC  
 CTGGCCTCGGGAGCGGCCCTGGCTATGCACCCACCATTCTACACATCTTGCAGCCACCAGCAGC  
 CCCACTCAGACTGCTGCACCACCCTTCCGAGGATGCACAGAGTGGCTCGGGTCCAGCGAGCCAGCC  
 CAGCTCCCTGCAGCCCAAGTCTCAAGCTCCAAACCTGCCTACGGCAACTCTCCATACTGGACAAAC

ACGCGTACGCGGCCGCTCGAGCAGAACTCATCTCAGAAGAGGATCTGGCAGCAATGATATCCTGGATT  
 ACAAGGATGACGACGATAAGGTTTAA

**Protein Sequence:**

>RC211506 representing NM\_018449  
 Red=Cloning site Green=Tags(s)

MMSVSSDHCARGAREKPKQISAAQSTQPQKQVVQATAEQMRLAQVIFDKNDSDFEAKVKQLMEVTGKNQDE  
 CIVALHDCNGDVNKA INILLEGSDTTSWETVGCKKNFAKENSENKENREKKSEKSSRGRGNRRKGR  
 GGNRGRFRGEENGIDCNQVDKPSDRGKRARGRGRGFRGRGRGAGRFSTQGMGT FNPADYSDSTSTDVCGT  
 KLVVWEEAAQNGADEGTELASNTHNIAQDL SNKSSYGLKGAWKNSVEEWTEDWTEDELSETKVFTASSAPA  
 ENHILPGQSIDL VALLQKPVPHSQASEANSFETSQQQGFQALVFTNSQHNNQMAPGTGSS TAVNSCSPQ  
 SLSSVLGSGFELAPPKMANITSSQILDQLKAPSLGQFTTTPSTQQNSTSHPTTTT SWDLKPPTSQSSVL  
 SHLDFKSQPEPSPVLSQLSQRQQHQSQAVTVPPPGLESFSPQAKLRESTPGDSPSTVNKLLQLPSTTIEN  
 ISVSVHQPPKH IKLAKRRIPPASKIPASAVEMPGSADVTGLNVQFGALEFGSEPSLSEFGSAPSSSENSN  
 QIPISL YSKSLSEPLNTSL SMTSAVQNSTYTTSVITSCSLTSSSLNSASPAMSSSYDQSSVHNRIPIYS  
 PVSSSESAPGTIMNGHGGGRSQQLDTPKTTGPPSALPSVSSLPSTTCTALLPSTSQHTGDLTSSPLSQ  
 LSSSLSSHQSSL SAHAALSSSTSHTHASVESASSHQSSATFSTAATSVSSSASSGASLSSSMNTANSLCL  
 GGTPASASSSSRAAPLVTSGKAPPNLPQGVPLLHNQYL VPGGLLPAYPIYGYDELQMLQSRLPVDYY  
 GIPFAAPTALASRDGSLANNPYPDVTKFGRGDSASPAPATTPAQPPQSQSQTHHTAQQPFVNPALPPGY  
 SYTGLPYTGMPSAFQYGPTMFVPPASAKQHGVNLSTPTPPFQASGYGQHGYSTGYDDL TQGTAAAGDYS  
 KGGYAGSSQAPNKSAGSGPGKGVSVSSSTTGLPDMTGSVYNKTQTFDKQGFHAGTPPPFSLPSVLGSTGP  
 LASGAAPGYAPPFLHILPAHQQPHSQLLHHHLPQDAQSGGQRSQPSSLQPKSQASKPAYGNPYPWTN

TRTRPLEQKLISEEDLAANDILDYKDDDDKV

**Chromatograms:** [https://cdn.origene.com/chromatograms/mk8025\\_f06.zip](https://cdn.origene.com/chromatograms/mk8025_f06.zip)  
**Restriction Sites:** SgfI-MluI  
**Cloning Scheme:**



**ACCN:** NM\_018449

**ORF Size:** 3357 bp

**OTI Disclaimer:** The molecular sequence of this clone aligns with the gene accession number as a point of reference only. However, individual transcript sequences of the same gene can differ through naturally occurring variations (e.g. polymorphisms), each with its own valid existence. This clone is substantially in agreement with the reference, but a complete review of all prevailing variants is recommended prior to use. [More info](#)

**OTI Annotation:** This clone was engineered to express the complete ORF with an expression tag. Expression varies depending on the nature of the gene.

**Components:** The ORF clone is ion-exchange column purified and shipped in a 2D barcoded Matrix tube containing 10ug of transfection-ready, dried plasmid DNA (reconstitute with 100 ul of water).

- Reconstitution Method:**
1. Centrifuge at 5,000xg for 5min.
  2. Carefully open the tube and add 100ul of sterile water to dissolve the DNA.
  3. Close the tube and incubate for 10 minutes at room temperature.
  4. Briefly vortex the tube and then do a quick spin (less than 5000xg) to concentrate the liquid at the bottom.
  5. Store the suspended plasmid at -20°C. The DNA is stable for at least one year from date of shipping when stored at -20°C.

**RefSeq:** [NM\\_018449.2](#), [NP\\_060919.2](#)

**RefSeq Size:** 4299 bp

**RefSeq ORF:** 3360 bp

**Locus ID:** 55833

UniProt ID: [Q5T6F2](#)

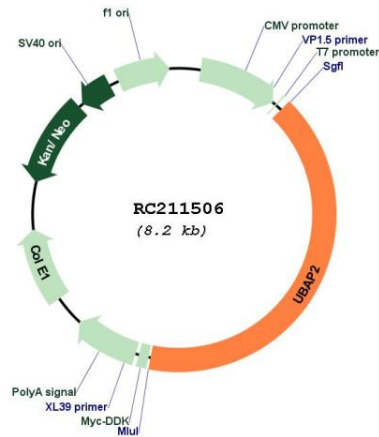
Cytogenetics: 9p13.3

Domains: UBA

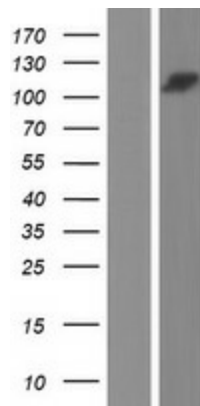
MW: 116.9 kDa

Gene Summary: The protein encoded by this gene contains a UBA (ubiquitin associated) domain, which is characteristic of proteins that function in the ubiquitination pathway. This gene may show increased expression in the adrenal gland and lymphatic tissues. Alternative splicing results in multiple transcript variants. [provided by RefSeq, Sep 2013]

**Product images:**



Circular map for RC211506



Western blot validation of overexpression lysate (Cat# [LY413031]) using anti-DDK antibody (Cat# [TA50011-100]). Left: Cell lysates from untransfected HEK293T cells; Right: Cell lysates from HEK293T cells transfected with RC211506 using transfection reagent MegaTran 2.0 (Cat# [TT210002]).