

Product datasheet for **RC211502**

Calpain 9 (CAPN9) (NM_016452) Human Tagged ORF Clone

Product data:

Product Type:	Expression Plasmids
Product Name:	Calpain 9 (CAPN9) (NM_016452) Human Tagged ORF Clone
Tag:	Myc-DDK
Symbol:	Calpain 9
Synonyms:	GC36; nCL-4
Mammalian Cell Selection:	Neomycin
Vector:	pCMV6-Entry (PS100001)
E. coli Selection:	Kanamycin (25 ug/mL)



[View online »](#)

ORF Nucleotide
Sequence:

>RC211502 representing NM_016452
Red=Cloning site Blue=ORF Green=Tags(s)

TTTTGTAATACGACTCACTATAGGGCGGCCGGGAATTCGTCGACTGGATCCGGTACCGAGGAGATCTGCC
GCC**CGGATCGCC**

ATGCCTTACCTCTACCGGCCCCAGGGCCTCAGGCACACCCGGTTCCCAAGGACGCCGGATCACCCACT
CCTCAGGCCAGAGCTTTGAGCAAATGAGGCAGGAGTGCCTGCAGAGAGGCCACCCTGTTTGAGGATGCAGA
CTTCCCAGCCAGCAATTCCTCCCTGTTCTACAGTGAGAGGCCGCAGATCCCTTTGTGTGAAAACGACCA
GGGAAATCGTGAAAACCCAGAATTCATTCTTGGAGGGGCCACCAGGACTGATATCTGCCAGGGAGAGC
TGGGAGACTGCTGGCTATTAGCCGCCATCGCCTCCCTTACGCTTAATCAAAAAGCACTGGCCAGAGTCAT
CCCCAGGACCAAAGCTTTGGCCCTGGTTATGCCGGGATATTCCATTTCCAGTTCTGGCAGCACAGTGAG
TGGCTGGAGCTGGTGATCGATGACCGCCTGCCACCTCAGGGACCGCTTGGTTTTCTCCACTCTGCCG
ACCACAACGAGTTCTGGAGCGCCTTCTGGAAAAAGCCTACGCCAAGCTAAATGGGAGCTATGAAGCTCT
GAAGGGAGGCAGCGCCATCGAGGCCATGGAAGACTTCACTGGGGTGTGGCAGAGACCTTCCAACTAAA
GAGGCCCCCGAGAATTCATGAGATTCTAGAGAAGGCTTTGAAGAGAGGCTCCCTGCTGGGCTGCTTCA
TTGATACCAAGAAGTGCTGCAGAATCTGAGGCCCGGACGCCGTTTGGTCTTATTAAGGGTCATGCCTACAG
TGTAACGGGAATTGACCAGGTAAGCTTCCGAGGCCAGAGAATCGAGCTCATCCGAATCCGGAACCCCTTGG
GGCCAGTTGAGTGGAACGGGTCGTGGAGCGACAGGATGGCATTAAAGGACTTCAAGGCCACTTTGATA
AAGTGGAGATCTGCAACCTCACTCCCGATGCCCTGGAGGAAGACGCGATCCACAAATGGGAGGTGACGGT
CCATCAGGGAAGCTGGTTCCGGCTCCACGGCTGGGGCTGCCCAATTTCTGGATACCTTTTGGACC
AATCCACAAATAAAATTTGCTCTGACTGAGAAAAGATGAGGGCAGGAGGAGTGTAGTTTCTTGTAGCCC
TGATGCAGAAAGATAGAAGGAACTCAAGAGATTTGGTGCCAATGTGCTGACAATCGCTATGCCATTTA
TGAGTGCCCTGACAAGACGAACACCTGAACAAAGACTTCTTCCAGATACCACGCTTCTCGGGCCAGAAGC
AAGACGTTTCATCAACCTGAGAGAAGTCTCCGACCGGTTCAAGCTGCCCCCTGGGAGTACATCCTGATTC
CCAGCACTTTTGAAGCCACAGGAAGCTGATTTCTGTCTGAGAACTTTTCCAGAGAAAAAGCCATTAC
CCGGGATATGGATGGAATGTAGACATTGACCTTCCAGCCTCCAAAGCCAACCTCCACCTGACCAGGAG
ACAGAGGAGGAGCAGCGGTTTCGGGCTCTGTTTGAACAAGTCGCTGGTGGAGACATGGAGGTGACAGCAG
AGGAACTTGAGTATGTTTTAAATGCTGTGCTGCAAAAAGAAAAGGACATCAAATCAAGAAGCTAAGCCT
GATCTCCTGTAAAAACATCATTTCCCTGATGGACACCAGCGCAATGGGAAGCTGGAGTTTGATGAATTC
AAAGTGTCTGGGACAAGCTGAAGCAGTGGATTAACCTTTTCTCGGTTTGATGCTGACAAGTCCGGCA
CCATGTCTACCTATGAACTACGGACTGCACTGAAAGCTGCAGGCTTTCAGCTGAGCAGCCACCTCCTGCA
GCTGATTGTGCTCAGGTATGCGGATGAGGAGCTCCAGCTGGACTTCGATGACTTCCCAACTGCCTGGTC
CGGCTGGAGAATGCGAGCCGGGTGTTCCAGGCTCTCAGTACAAAGAACAAGGAGTTCATTTCATCTCAATA
TAAATGAGTTCATCCATTTGACAATGAACATC

ACGCGTACGCGGCCGCTCGAGCAGAACTCATCTCAGAAGAGGATCTGGCAGCAAATGATATCCTGGATT
ACAAGGATGACGACGATAAGGTTTAA

Reconstitution Method:

1. Centrifuge at 5,000xg for 5min.
2. Carefully open the tube and add 100ul of sterile water to dissolve the DNA.
3. Close the tube and incubate for 10 minutes at room temperature.
4. Briefly vortex the tube and then do a quick spin (less than 5000xg) to concentrate the liquid at the bottom.
5. Store the suspended plasmid at -20°C. The DNA is stable for at least one year from date of shipping when stored at -20°C.

RefSeq: [NM_016452.2](#), [NP_057536.1](#)

RefSeq Size: 2484 bp

RefSeq ORF: 1995 bp

Locus ID: 10753

UniProt ID: [O14815](#)

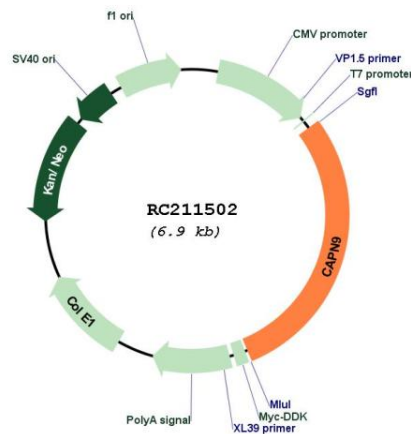
Cytogenetics: 1q42.2

Protein Families: Druggable Genome, Protease

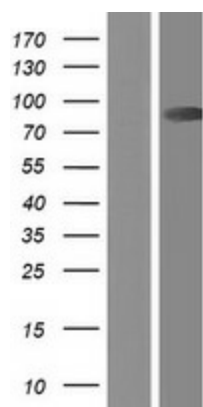
MW: 76 kDa

Gene Summary: Calpains are ubiquitous, well-conserved family of calcium-dependent, cysteine proteases. The calpain proteins are heterodimers consisting of an invariant small subunit and variable large subunits. The large subunit possesses a cysteine protease domain, and both subunits possess calcium-binding domains. Calpains have been implicated in neurodegenerative processes, as their activation can be triggered by calcium influx and oxidative stress. The protein encoded by this gene is expressed predominantly in stomach and small intestine and may have specialized functions in the digestive tract. This gene is thought to be associated with gastric cancer. Multiple alternatively spliced transcript variants encoding different isoforms have been found for this gene. [provided by RefSeq, Jul 2008]

Product images:



Circular map for RC211502



Western blot validation of overexpression lysate (Cat# [LY413959]) using anti-DDK antibody (Cat# [TA50011-100]). Left: Cell lysates from untransfected HEK293T cells; Right: Cell lysates from HEK293T cells transfected with RC211502 using transfection reagent MegaTran 2.0 (Cat# [TT210002]).