

## Product datasheet for **RC211501**

### SPATA6 (NM\_019073) Human Tagged ORF Clone

#### Product data:

Product Type:	Expression Plasmids
Product Name:	SPATA6 (NM_019073) Human Tagged ORF Clone
Tag:	Myc-DDK
Symbol:	SPATA6
Synonyms:	HASH; SRF-1; SRF1
Mammalian Cell Selection:	Neomycin
Vector:	pCMV6-Entry (PS100001)
E. coli Selection:	Kanamycin (25 ug/mL)



[View online »](#)

**ORF Nucleotide Sequence:**

>RC211501 representing NM\_019073  
 Red=Cloning site Blue=ORF Green=Tags(s)

TTTTGTAATACGACTCACTATAGGGCGGCCGGAATTCGTCGACTGGATCCGGTACCGAGGAGATCTGCC  
 GCC**GCGATCGCC**

ATGCCGAAGTGAAGGCGCTGCAGTGCGCCCTGGCGCTGGAGATCAGCTCAGTAACCTGCCAGGAGTCG  
 TGCTTAAAGACAAAGAGGACATCTATCTTAGCATCTGTGTGTTTGGCCAATACAAAAAGACACAATGTGT  
 CCCAGCCACTTTTCCCCTGGTCTTCAATGCCAGAATGGTGTGTTGAAAAGGTGTTCCCGGACGCAGTAGAT  
 CCTGGAGATGTGGTTACACAGCTTGAATATGATACAGCAGTGTTCGAGTTGATACAGCTAGTTCACCCAG  
 TGGGTGAAACACTGTCTACGTATGACGAAAATACACGAGATTTTCATGTTCCGGGTCCAAACCAAATGTC  
 TGGACACCATGATTCAAACCGCCAGGTTACCATGAGGAGGATTTCTGGCCTTCGAGGAAATGCTCCAAGG  
 CTGGAATTTTCTACGACTTCAGTGAATGTCTGATAAGTTCAAGGAAATGCCACACTCAGGATA  
 AATTTATTTACCATTTGGCTCCAGTTGAAAAATCATATGGCAGACTGCAAAAACAGAACATCAAGATCACA  
 AAAGAAAAATCCAAGTACCTGAGAGAAGTAAATACTGTATAAATGCAAAAACTACGAACAGCCTACA  
 ATTTCTTCAAAAACACTCTCCATCTCCCTACACAAAAAGACGATGTGTGAGCTATCTGAAGACACCA  
 GGCGGCGCTGGCCCATTTAAATCTGGGACCCTATGAGTTCAAAAAGAAACAGATAAACCTCCATTTGT  
 GATTAGACATGTTGATCCCCAAGTCCCAGGGCTGATACTTTATTGGGATCTTCTGGAAGAGACTGTGAA  
 AGAGATGGATGGTCAAGGGTGCACAATGATCATTCTCATCTTGGCTGCTGCCGACCAAGGATTATAAGG  
 TTATCAGGACACCCCATGGGAGAGACTTCGATGACTCTTTAGAAAAATGTGAAGAGTATTTGAGCCCAAG  
 GTCGTGTAGTAAGCCCCGGCATTACGCGAGGACCTTGTAGTCCATTACGACCCCTCAACAATGCCAAAG  
 CATTCTCCAAGCCCTGTGTTAAATAGAGCTTCTCTCAGGAAAGATTTTCATTCTGATTGGTGTTCACCTT  
 CAAACTGCGATGAGATCCATGACCGGGTAAAAATGTCTTGAAATCACATCAGGCTCATCAAAGACATTT  
 ATATGATGAGAGAGACCTAGAGAAAGATGATGAACTGGAAGTAAAAAGAGTCTTTTATGTAGAGACTCT  
 GCCTATGACAGTGACCCCGAGTATAGCTCATGTACGACGCCACGTGGCACTTTCCATTTGGATGACGGTG  
 AATACTGGTCCAACAGGGCAGCCTCTTATAAGGGAAAAATCCCACCGACCCATCTTTGAGAACAGCATGGA  
 CAAGATGTACAGGAACCTATACAAAAAGGCCTGTAGTTCTGCTTCACATACACAGGAAAGCTTC

**ACGCGT**ACGCGGCCGCTCGAGCAGAAACTCATCTCAGAAGAGGATCTGGCAGCAATGATATCTGGATT  
 ACAAGGATGACGACGATAAGGTTTAA

**Protein Sequence:**

>RC211501 representing NM\_019073  
 Red=Cloning site Green=Tags(s)

MPKVKALQCALALEISSVTCPGVVLKDKEDIYLSICVFGQYKKTQCVPATFPLVFNARMVFEKVFDPDAVD  
 PGDVVTQLEYDTAVFELIQLVPPVGETLSTYDENTRDFMFPGNQMSGHHSNRQVTMRRISGLRGNAPR  
 LEFSTTSVITECLISSRKCHTQDKFIYHLAPVEKSHGRLQNRTRSRSQKKKSKSPERSKYCINAKNYEQPT  
 ISSKSHSPSPYTKRRMCELSSETRRRRLAHLNLGPYEFKKTDPKPFVIRHVDPPSPRADTLLGSSGRDCE  
 RDGWSRVHNDHSHLGCCRPKDYKVRTPHGRDFDSDLEKCEEYLSPRSCSKPRHSARTLLVHSAPSTMPK  
 HSPSPVLNRAASLRERFHSWCSNSCDEIHDRVKNVLSHQAHQRHLYDERDLEKDELELKRSLLCRDS  
 AYDSDPEYSSCQPPRGTFHLDGGEYWSNRAASYKGSHPRIFFENSMDKMYRNLYKKACSSASHTQESF

**TR**TRPLEQKLISEEDLAANDILDYKDDDDKV

**Chromatograms:**

[https://cdn.origene.com/chromatograms/mk8010\\_a08.zip](https://cdn.origene.com/chromatograms/mk8010_a08.zip)

**Restriction Sites:**

Sgfl-Mlul

**Cloning Scheme:**


**ACCN:** NM\_019073

**ORF Size:** 1464 bp

**OTI Disclaimer:** The molecular sequence of this clone aligns with the gene accession number as a point of reference only. However, individual transcript sequences of the same gene can differ through naturally occurring variations (e.g. polymorphisms), each with its own valid existence. This clone is substantially in agreement with the reference, but a complete review of all prevailing variants is recommended prior to use. [More info](#)

**OTI Annotation:** This clone was engineered to express the complete ORF with an expression tag. Expression varies depending on the nature of the gene.

**Components:** The ORF clone is ion-exchange column purified and shipped in a 2D barcoded Matrix tube containing 10ug of transfection-ready, dried plasmid DNA (reconstitute with 100 ul of water).

- Reconstitution Method:**
1. Centrifuge at 5,000xg for 5min.
  2. Carefully open the tube and add 100ul of sterile water to dissolve the DNA.
  3. Close the tube and incubate for 10 minutes at room temperature.
  4. Briefly vortex the tube and then do a quick spin (less than 5000xg) to concentrate the liquid at the bottom.
  5. Store the suspended plasmid at -20°C. The DNA is stable for at least one year from date of shipping when stored at -20°C.

**RefSeq:** [NM\\_019073.4](#)

**RefSeq Size:** 1739 bp

**RefSeq ORF:** 1467 bp

**Locus ID:** 54558

**UniProt ID:** [Q9NWH7](#)

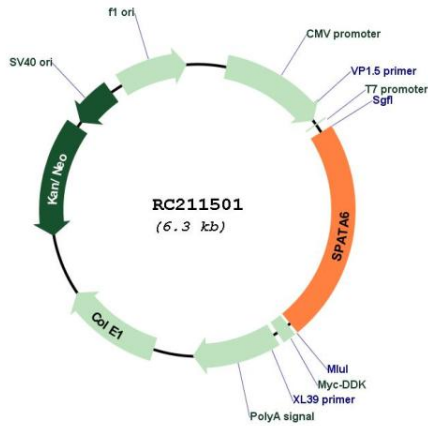
**Cytogenetics:** 1p33

**Protein Families:** Secreted Protein

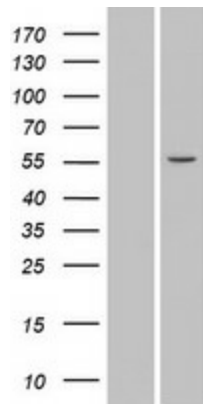
**MW:** 55.8 kDa

**Gene Summary:** Required for formation of the sperm connecting piece during spermiogenesis. Sperm connecting piece is essential for linking the developing flagellum to the head during late spermiogenesis. May be involved in myosin-based microfilament transport through interaction with myosin subunits.[UniProtKB/Swiss-Prot Function]

**Product images:**



Circular map for RC211501



Western blot validation of overexpression lysate (Cat# [LY412785]) using anti-DDK antibody (Cat# [TA50011-100]). Left: Cell lysates from untransfected HEK293T cells; Right: Cell lysates from HEK293T cells transfected with RC211501 using transfection reagent MegaTran 2.0 (Cat# [TT210002]).