

## Product datasheet for **RC211500**

### FAM89B (NM\_001098784) Human Tagged ORF Clone

#### Product data:

Product Type:	Expression Plasmids
Product Name:	FAM89B (NM_001098784) Human Tagged ORF Clone
Tag:	Myc-DDK
Symbol:	FAM89B
Synonyms:	LRAP25; MTRV; MTRV1
Mammalian Cell Selection:	Neomycin
Vector:	pCMV6-Entry (PS100001)
E. coli Selection:	Kanamycin (25 ug/mL)
ORF Nucleotide Sequence:	>RC211500 representing NM_001098784 Red=Cloning site Blue=ORF Green=Tags(s)

TTTTGTAATACGACTCACTATAGGGCGCCGGGAATTCGTCGACTGGATCCGGTACCGAGGAGATCTGCC  
GCC**CGATCGCC**

ATGAACGGGCTGCCCTCGGCAGAGGCGCCGGGGCGGGCTGCGCTTTGGCCGGGCTCCCACCGCTGC  
CGCGCGGCTCAGCGGCTCCTAATGCGAGCGGGGGCTCGTGGCGGGAGCTGGAGCGGTCTACAGCCA  
GCGCAGCCGCATCCACGACGAGCTGAGCCGCGCCGCCCGCCCGGACGGGCCCCGCCACGCCCGGC  
GCCCCAACGGGACCCGACGCCCGCCGCTCGTCTGTCAACCTCGACTCAGCGCTGGCCGCGCTGC  
GCAAGGAGATGTTGTCTGCAGGTGGGGCTGCGGCAGTTGGACATGTCCTTGTGTGCCAGCTGTGGGGCC  
TGTACGAGTCAATCCAGGACTACAAACCTGTGCCAAGACCTGAGCTTCTGCCAGGACCTGCATCCTC  
CTCCATTCGGACAGCTCTACCCACCGGATGCGGGCCTGTC

**ACGCGT**ACGCGGCCGCTCGAGCAGAACTCATCTCAGAAGAGGATCTGGCAGCAAATGATATCCTGGATT  
ACAAGGATGACGACGATAAGGTTTAA

Protein Sequence:	>RC211500 representing NM_001098784 Red=Cloning site Green=Tags(s)
-------------------	---

MNGLPSAEAPGGAGCALAGLPLPRGLSGLLNASGGSWRELERVYSQRSRIHDELSRAARAPDGPRHAAG  
AANAGPAAGPRRPVNLDSALAALRKEMLSAGGAAAVGHVLVVPAVGPVVRVNPGLQTPVPRPELLPGPVIL  
PPFGQLLPTGCGPV

**TR**TRPLEQKLISEEDLAANDILDYKDDDDKV

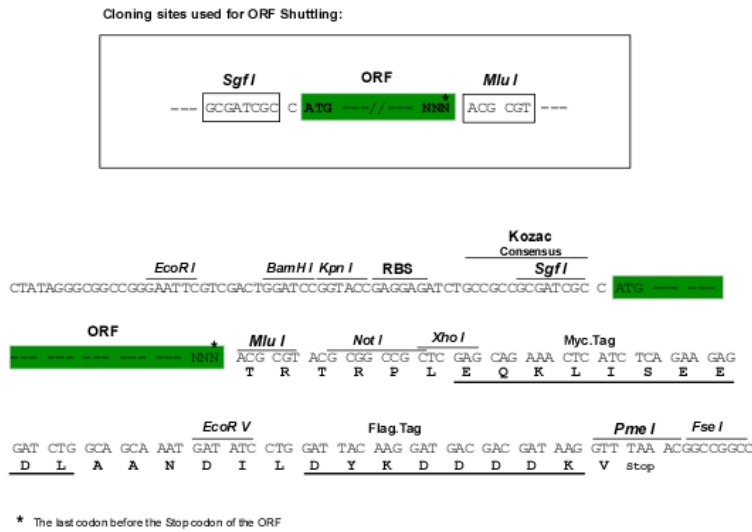
Chromatograms:	<a href="https://cdn.origene.com/chromatograms/ja1458_c10.zip">https://cdn.origene.com/chromatograms/ja1458_c10.zip</a>
----------------	---



[View online »](#)

Restriction Sites: SgfI-MluI

Cloning Scheme:



ACCN: NM\_001098784

ORF Size: 462 bp

OTI Disclaimer: The molecular sequence of this clone aligns with the gene accession number as a point of reference only. However, individual transcript sequences of the same gene can differ through naturally occurring variations (e.g. polymorphisms), each with its own valid existence. This clone is substantially in agreement with the reference, but a complete review of all prevailing variants is recommended prior to use. [More info](#)

OTI Annotation: This clone was engineered to express the complete ORF with an expression tag. Expression varies depending on the nature of the gene.

Components: The ORF clone is ion-exchange column purified and shipped in a 2D barcoded Matrix tube containing 10ug of transfection-ready, dried plasmid DNA (reconstitute with 100 ul of water).

Reconstitution Method:

1. Centrifuge at 5,000xg for 5min.
2. Carefully open the tube and add 100ul of sterile water to dissolve the DNA.
3. Close the tube and incubate for 10 minutes at room temperature.
4. Briefly vortex the tube and then do a quick spin (less than 5000xg) to concentrate the liquid at the bottom.
5. Store the suspended plasmid at -20°C. The DNA is stable for at least one year from date of shipping when stored at -20°C.

RefSeq: [NM\\_001098784.2](#)

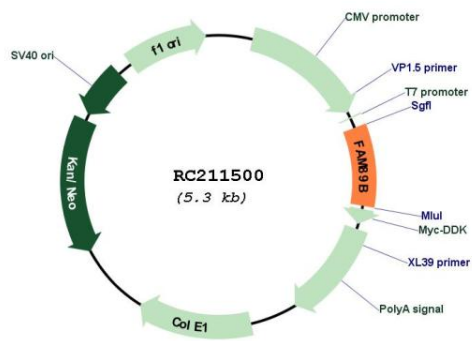
RefSeq Size: 1477 bp

RefSeq ORF: 465 bp

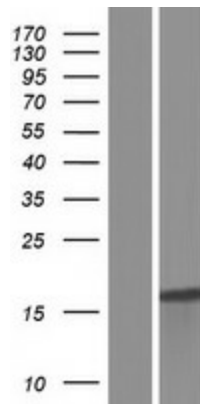
Locus ID: 23625

**UniProt ID:** [Q8N5H3](#)  
**Cytogenetics:** 11q13.1  
**Protein Families:** Druggable Genome  
**MW:** 15.2 kDa  
**Gene Summary:** Negatively regulates TGF-beta-induced signaling; in cooperation with SKI prevents the translocation of SMAD2 from the nucleus to the cytoplasm in response to TGF-beta. Acts as an adapter that mediates the specific recognition of LIMK1 by CDC42BPA and CDC42BPB in the lamellipodia. LRAP25-mediated CDC42BPA/CDC42BPB targeting to LIMK1 and the lamellipodium results in LIMK1 activation and the subsequent phosphorylation of CFL1 which is important for lamellipodial F-actin regulation.[UniProtKB/Swiss-Prot Function]

### Product images:



Circular map for RC211500



Western blot validation of overexpression lysate (Cat# [LY420673]) using anti-DDK antibody (Cat# [TA50011-100]). Left: Cell lysates from untransfected HEK293T cells; Right: Cell lysates from HEK293T cells transfected with RC211500 using transfection reagent MegaTran 2.0 (Cat# [TT210002]).